

2019.06.21

**Re: PBA Fern Isle Park – Bid Addendum
Revisions/Updates & Clarifications to Bid Set**

To Whom it may concern:

The purpose of this letter is to clarify all revisions and updates of the originally provided Bid Set.

CIVIL

Sheet C-601 – Water and Sewer Plan

- *Revised plan to include offsite water main.*

Sheet C-603 – Water and Sewer Profiles

- *Revised plans to include offsite watermain profiles.*

LANDSCAPE

Arborist Report referenced in landscape set included for reference. The protection and preservation of the existing trees is critical to this project.

Sheet L-300 – Hardscape Plan

- *Three (3) ADA tables identified on plan.*

Sheet L-400 – Landscape Plan

- *Updates in quantities, locations, & species per comments by City. Refer to Plant Schedule.*

Sheet L-600 – Irrigation Plan

- *Updated per landscape modifications.*

PLUMBING

Sheet P-2.0 – Restrooms Sanitary and Domestic Water Lines Domestic / Sanitary Isometric

- *Sanitary Waste / Domestic Isometric Diagram revised to comply with City comments.*

ARCHITECTURE

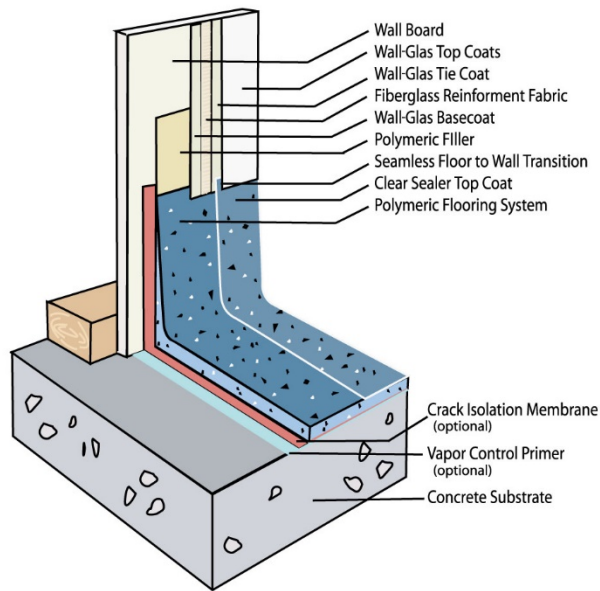
Clarified Specifications:

- *Re: Standing Seam Metal Roof System: Gulf Coast Supply & Manufacturing LLC – Versalok 1.5, 24ga. Steel, 12” wide, standing seam metal roof panel with 1.5” high seamed ribs. Panels have a striated finish with a Galvalume Plus coating and a 25-year guarantee. NOA# 14-0520.05*

Sheet 6.0 Finish Schedule

- *Dex-O-Tex Epoxy Floor Finish → The wall system is Dex-o-Tex Wallcote “E”. The floor is Dex-O-Tex Décor-Flor with a “sanitary cove”. Color to be selected by Architect.*

SEAMLESS FLOOR TO WALL TRANSITION



If you need further clarification, please feel free to contact me at (305) 673-2025 or at george.puig@kimley-horn.com, or Gregory Gonzalez at (305) 535-7714 / gregory.gonzalez@kimley-horn.com.

Sincerely,

George E. Puig, PLA

Senior Landscape Architect