

- LEGEND:**
- BOLLARD
 - CATCH BASIN
 - ELECTRIC BOX
 - ◇ FIBER OPTIC CABLE PAINTED MARKER
 - LIGHT POLE
 - LIVE OAK TREE
 - MANHOLE
 - PALM TREE
 - PILE
 - SIGN
 - WATER VALVE
 - RELOCATE TREE
 - TREE TO BE PRESERVED IN PLACE

PLANNING & ZONING DEPARTMENT
ENVIRONMENTAL RESOURCES

DATE: 4/8/15 PLAN/PROCESS # BOS 616 75200

APPROVED: *[Signature]*

APPROVED WITH CONDITIONS

DELETED/VOID: REVISE AS INDICATED, BY NOTATIONS AND CORRECTIONS, AND RESUBMIT

THE APPROVAL OF THESE PLANS SHALL NOT BE CONSIDERED TO PERMIT VIOLATIONS OF ANY CITY ORDINANCES OR STATE LAWS. APPROVED PLANS SHALL NOT PREVENT THE CITY OF MIAMI FROM REQUIRING CORRECTIONS FOR ERRORS IN PLANS, SPECIFICATIONS OR CONSTRUCTION. A SET OF THESE APPROVED PLANS SHALL BE KEPT ON THE JOB SITE AT ALL TIMES. SUCH APPROVED PLANS SHALL NOT BE CHANGED, MODIFIED, OR ALTERED WITHOUT THE CITY OF MIAMI'S APPROVAL.

REVISIONS SIGNATURE: *[Signature]* DATE: 4/8/15

MIAMI RIVER
BOOK 1487, PAGE 213 M.C.P.R.
ATLAS SHEET 25F

TREE & PALM RELOCATION PLAN
DEPARTMENT OF PARKS & RECREATION
7 MAY 2015

DOUGLAS W. MANN
P.E. NO. 44046

DATE: 4/8/15

THIS SURVEY MAP OR THE COPIES THEREOF ARE NOT VALID WITHOUT THE SIGNATURE AND THE ORIGINAL RAISED SEAL OF A FLORIDA LICENSED SURVEYOR AND MAPPER.

CB&I Environmental and Infrastructure, Inc.
14350 COMMERCE WAY
MIAMI LAKES, FLORIDA 33016
PH: (305) 818-1888
www.CBI.com
C.O.A. FL. #9317

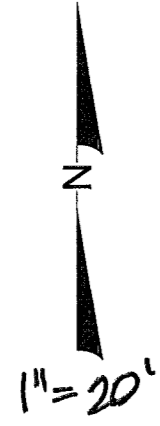
REVISIONS	Checked by:	Designed by:	Date	Description
	AMB	DM		
	DM	GK	3/07/13	AS NOTED
	DM	DM	148570	

Reference files:
 Designed by: DM
 Drawn by: GK
 Date: 3/07/13
 Plot Scale: AS NOTED
 Comm. No.: 148570

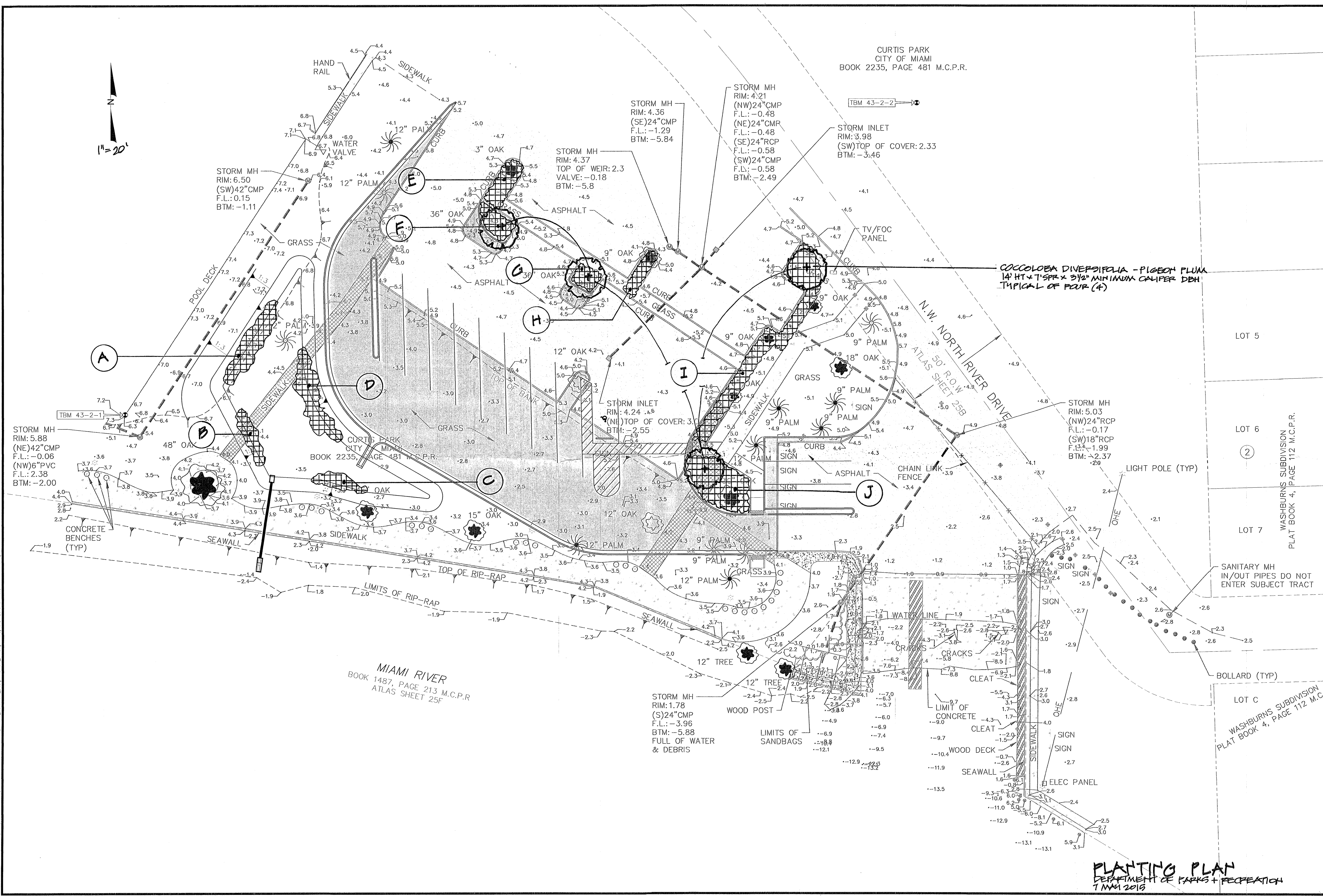
CITY OF MIAMI, FLORIDA
CURTIS PARK BOAT RAMP IMPROVEMENTS

TREE DISPOSITION PLAN

DRAWING NO. **TS-1**
SHEET 1 OF 1



CURTIS PARK
CITY OF MIAMI
BOOK 2235, PAGE 481 M.C.P.R.



COCCOLOBA DIVERSIFOLIA - PIGEON PLUM
14' HT x 7" SPK x 3 1/2" MINIMUM CALIBER DBH
TYPICAL OF FOUR (4)

MIAMI RIVER
BOOK 1487, PAGE 213 M.C.P.R.
ATLAS SHEET 25F

PLANTING PLAN
DEPARTMENT OF PARKS + RECREATION
7 MAY 2016

CB&I Environmental and Infrastructure, Inc.
14350 COMMERCE WAY
MIAMI LAKES, FLORIDA 33016
PH. (305) 818-1888
www.CBI.com
C.O.A. FL #8317

REVISIONS	Description
1	8/28/13 MAIN-BOAT RAMP
2	03/27/15 PARAGUET MARKING

Checked by:	DM	AMB
Reviewed by:	DM	DM
Drawn by:	DM	DM
Date:	3/07/13	DM
Plot Scale:	AS NOTED	DM
Comm. No.:	148570	DM
No. 1	Date:	

CITY OF MIAMI, FLORIDA
CURTIS PARK BOAT RAMP IMPROVEMENTS
PROPOSED
PARKING IMPROVEMENTS
DRAWING NO.
PV-2
SHEET 8 OF 15