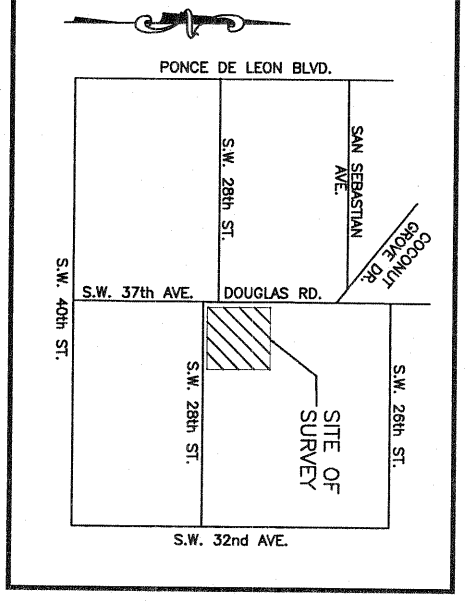


AS-BUILT TABLE

STRUCTURE ID	FROM E.L.	PIPE INFORMATION	INVERT E.L.
746-CB	8.56	SM. 15" CLAY	5.06'
748-CB	13.26	UNABLE TO FULL COVER	4.24'
748-DKH	13.26	E. 18" CAP-BURIED	8.22'
748-CB	12.86'	S. 18" CAP	6.22'
746-CB	11.84'	FILL OF DEBRIS	7.01'
745-CB	10.80'	S. 18" CAP	6.21'
745-CB	10.80'	BOS	6.21'
745-CB	11.35'	E. BURIED	6.24'
745-CB	11.35'	E. BURIED	7.14'
745-CB	11.35'	N. 18" CAP	6.03'
745-CB	11.35'	N. 18" CAP	1.97'
745-CB	11.18'	N. 18" CAP	7.21'
745-CB	12.45'	W. BURIED	2.86'
745-CB	10.80'	FILL OF DEBRIS	
745-CB	10.80'	FILL OF DEBRIS	
745-CB	10.80'	FILL OF DEBRIS	
745-CB	10.80'	FILL OF DEBRIS	
745-CB	10.80'	FILL OF DEBRIS	

NOTE:
PIPE SIZES, DIMENSIONS AND TYPES SHOULD BE VERIFIED PRIOR TO CONSTRUCTION DUE TO STANDING WATER, DEBRIS AND OTHER OBSTRUCTIONS WITHIN THE STRUCTURES.



- STREETS NOTES:**
1. SURRENDER
 2. ELEVATIONS SHOWN HEREON ARE BASED ON THE NATIONAL GEODETIC VERTICAL DATUM OF 1929.
 3. THE SURVEY WAS CONDUCTED ON THE BASIS OF THE NATIONAL GEODETIC VERTICAL DATUM OF 1929.
 4. THE SURVEY DOES NOT DEFINE THE LOTS OR EXTENT OF POTENTIAL JURISDICTIONAL BOUNDARIES.
 5. THE SURVEY DOES NOT DEFINE THE LOTS OR EXTENT OF POTENTIAL JURISDICTIONAL BOUNDARIES.
 6. OTHERS SHOULD BE NOTIFIED OF ANY POTENTIAL JURISDICTIONAL BOUNDARIES.
 7. THIS SURVEY DOES NOT DEFINE THE LOTS OR EXTENT OF POTENTIAL JURISDICTIONAL BOUNDARIES.
 8. THE SPERKS SHOWN IN THE LEGEND AND ON THIS MAP MAY HAVE BEEN ENLARGED OR REDUCED FOR CLARITY.
 9. THERE ARE 88 RECORDS FROM 1929 TO 1998 ON THIS SITE.
 10. THERE ARE 88 RECORDS FROM 1929 TO 1998 ON THIS SITE.

LEGAL DESCRIPTION:

A PORTION OF LOT 5, TRACT OF CHARLES G. TOUSEY, ACCORDING TO THE PLAT THEREOF, AS RECORDED IN PLAT BOOK 1, PAGE 151, OF THE PUBLIC RECORDS OF MIAMI-DADE COUNTY, FLORIDA, BEING MORE PARTICULARLY DESCRIBED AS FOLLOWS:

BEING AT THE NORTHEAST CORNER OF SAID LOT 5 ALSO BEING THE NORTHEAST CORNER OF TRACT A OF DOUGLAS DEPARTMENT SCHOOL (PLAT BOOK 25, PAGE 87, L.D.C.), THENCE S27°15'35"E ALONG THE EAST LINE OF SAID DOUGLAS DEPARTMENT SCHOOL FOR A DISTANCE OF 667.28 FEET TO A POINT ON THE NORTH RIGHT OF WAY LINE OF SAID DOUGLAS DEPARTMENT SCHOOL FOR A DISTANCE OF 612.22 FEET; TO A POINT OF CURVATURE FOR A CURVE CONVEX TO THE RIGHT HAVING A RADIUS OF 25.00 FEET AND A CENTRAL ANGLE OF 89°50'15"E; THENCE NORTHERLY ALONG AN ARC OF SAID CURVE 30.20 FEET TO THE POINT OF TANGENCY; THENCE N02°15'17"W ALONG THE EAST RIGHT OF WAY LINE OF SAID DOUGLAS DEPARTMENT SCHOOL FOR A DISTANCE OF 622.37 FEET; THENCE N07°54'57"E ALONG THE NORTH RIGHT OF WAY LINE OF SAID DOUGLAS DEPARTMENT SCHOOL FOR A DISTANCE OF 47.74 FEET TO THE POINT OF BEGINNING.

SAID LOTS LING IN THE CITY OF COCONUT GROVE, MIAMI-DADE COUNTY, FLORIDA, CONTAINING 412322 SQUARE FEET, 9.49 ACRES, MORE OR LESS.

TREE TABLE

TREE #	SPECIES	DIA.	HEIGHT	SPREAD DIA.
406	SPICEWOOD	8"	24'	40'
411	SPICEWOOD	6"	24'	40'
412	SPICEWOOD	4"	24'	40'
413	SPICEWOOD	4"	24'	40'
414	SPICEWOOD	4"	24'	40'
415	SPICEWOOD	4"	24'	40'
416	SPICEWOOD	4"	24'	40'
417	SPICEWOOD	4"	24'	40'
418	SPICEWOOD	4"	24'	40'
419	SPICEWOOD	4"	24'	40'
420	SPICEWOOD	4"	24'	40'
421	SPICEWOOD	4"	24'	40'
422	SPICEWOOD	4"	24'	40'
423	SPICEWOOD	4"	24'	40'
424	SPICEWOOD	4"	24'	40'
425	SPICEWOOD	4"	24'	40'
426	SPICEWOOD	4"	24'	40'
427	SPICEWOOD	4"	24'	40'
428	SPICEWOOD	4"	24'	40'
429	SPICEWOOD	4"	24'	40'
430	SPICEWOOD	4"	24'	40'
431	SPICEWOOD	4"	24'	40'
432	SPICEWOOD	4"	24'	40'
433	SPICEWOOD	4"	24'	40'
434	SPICEWOOD	4"	24'	40'
435	SPICEWOOD	4"	24'	40'
436	SPICEWOOD	4"	24'	40'
437	SPICEWOOD	4"	24'	40'
438	SPICEWOOD	4"	24'	40'
439	SPICEWOOD	4"	24'	40'
440	SPICEWOOD	4"	24'	40'
441	SPICEWOOD	4"	24'	40'
442	SPICEWOOD	4"	24'	40'
443	SPICEWOOD	4"	24'	40'
444	SPICEWOOD	4"	24'	40'
445	SPICEWOOD	4"	24'	40'
446	SPICEWOOD	4"	24'	40'
447	SPICEWOOD	4"	24'	40'
448	SPICEWOOD	4"	24'	40'
449	SPICEWOOD	4"	24'	40'
450	SPICEWOOD	4"	24'	40'
451	SPICEWOOD	4"	24'	40'
452	SPICEWOOD	4"	24'	40'
453	SPICEWOOD	4"	24'	40'
454	SPICEWOOD	4"	24'	40'
455	SPICEWOOD	4"	24'	40'
456	SPICEWOOD	4"	24'	40'
457	SPICEWOOD	4"	24'	40'
458	SPICEWOOD	4"	24'	40'
459	SPICEWOOD	4"	24'	40'
460	SPICEWOOD	4"	24'	40'
461	SPICEWOOD	4"	24'	40'
462	SPICEWOOD	4"	24'	40'
463	SPICEWOOD	4"	24'	40'
464	SPICEWOOD	4"	24'	40'
465	SPICEWOOD	4"	24'	40'
466	SPICEWOOD	4"	24'	40'
467	SPICEWOOD	4"	24'	40'
468	SPICEWOOD	4"	24'	40'
469	SPICEWOOD	4"	24'	40'
470	SPICEWOOD	4"	24'	40'
471	SPICEWOOD	4"	24'	40'
472	SPICEWOOD	4"	24'	40'
473	SPICEWOOD	4"	24'	40'
474	SPICEWOOD	4"	24'	40'
475	SPICEWOOD	4"	24'	40'
476	SPICEWOOD	4"	24'	40'
477	SPICEWOOD	4"	24'	40'
478	SPICEWOOD	4"	24'	40'
479	SPICEWOOD	4"	24'	40'
480	SPICEWOOD	4"	24'	40'
481	SPICEWOOD	4"	24'	40'
482	SPICEWOOD	4"	24'	40'
483	SPICEWOOD	4"	24'	40'
484	SPICEWOOD	4"	24'	40'
485	SPICEWOOD	4"	24'	40'
486	SPICEWOOD	4"	24'	40'
487	SPICEWOOD	4"	24'	40'
488	SPICEWOOD	4"	24'	40'
489	SPICEWOOD	4"	24'	40'
490	SPICEWOOD	4"	24'	40'
491	SPICEWOOD	4"	24'	40'
492	SPICEWOOD	4"	24'	40'
493	SPICEWOOD	4"	24'	40'
494	SPICEWOOD	4"	24'	40'
495	SPICEWOOD	4"	24'	40'
496	SPICEWOOD	4"	24'	40'
497	SPICEWOOD	4"	24'	40'
498	SPICEWOOD	4"	24'	40'
499	SPICEWOOD	4"	24'	40'
500	SPICEWOOD	4"	24'	40'

CERTIFICATE:
I HEREBY CERTIFY THAT THE ATTACHED BOUNDARY AND TOPOGRAPHIC SURVEY OF THE HERON DESCRIBED HEREON IS ACCORDING TO THE BEST OF MY KNOWLEDGE, BELIEF, AND INFORMATION AS SURVEYED UNDER MY PERSONAL SUPERVISION AND CONTROL AND THAT THE BOUNDARY AND TOPOGRAPHIC SURVEY MEETS THE REQUIREMENTS OF SECTION 472.02, FLORIDA STATUTES, AND IS IN ACCORDANCE WITH THE ENGINEERING CODE PURSUANT TO SECTION 472.02, FLORIDA STATUTES, SUBJECT TO THE QUALIFICATIONS LISTED HEREON.

KEITH AND SCHNARS, P.A.
ENGINEERS-PLANNERS-SURVEYORS

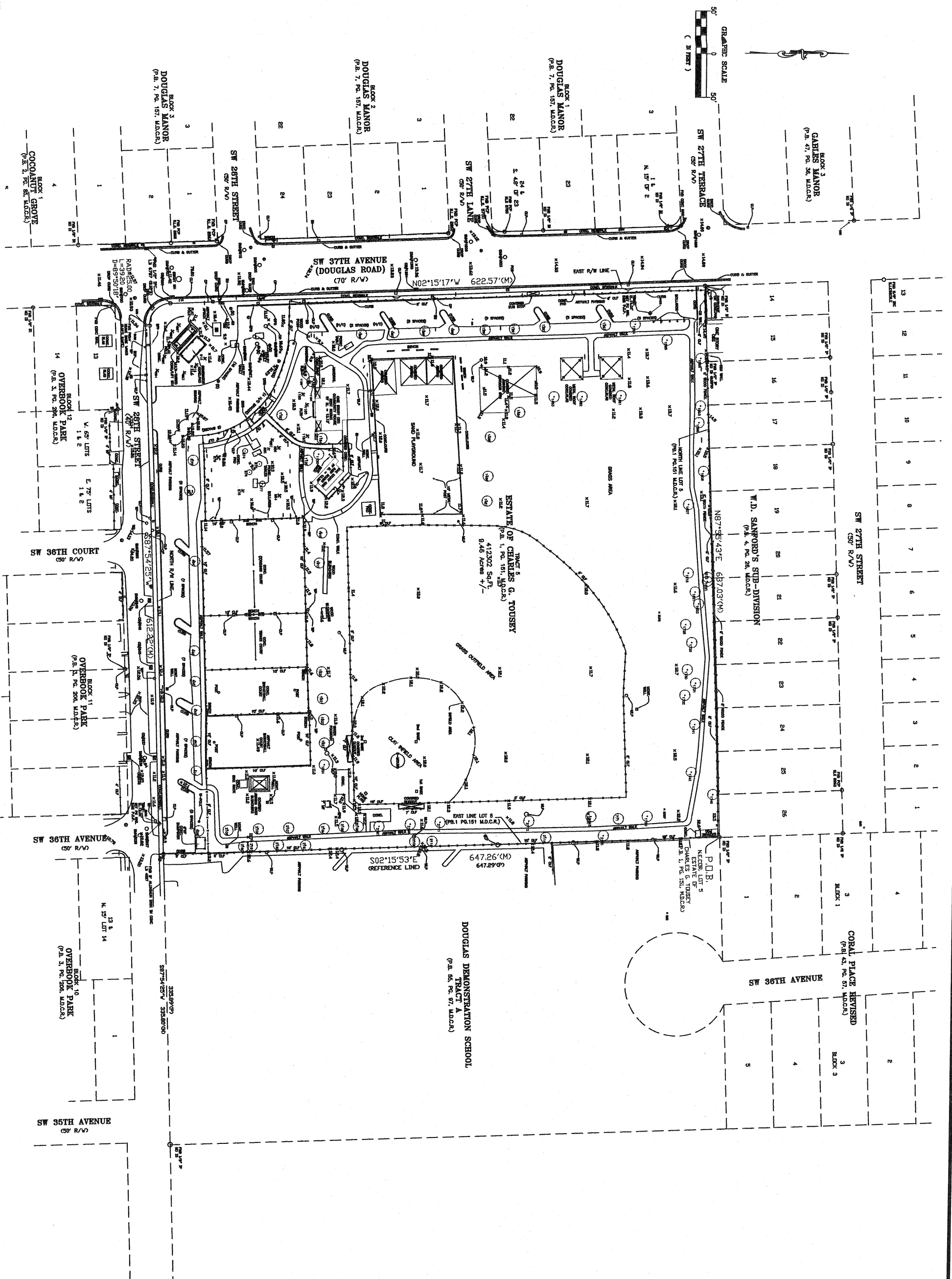
BOUNDARY AND TOPOGRAPHIC SURVEY DOUGLAS PARK

A PORTION OF TRACT 5
ESTATE OF CHARLES G. TOUSEY
(PLAT BOOK 1 PAGE 151 M.D.C.R.)
MIAMI - DADE COUNTY, FLORIDA

DATE: 3/20/2015
SCALE: AS SHOWN
FIELD BOOK: 1428
DRAWN BY: DPP
CHECKED BY: RKK

KEITH and SCHNARS, P.A.
ENGINEERS, PLANNERS, SURVEYORS
LB 1337
6500 NORTH ANDREWS AVENUE, FORT LAUDERDALE, FL 33308-2132 (954)776-1616

Z:\PROJECTS\19004\2\SURVE\CAD_FILES\19004.02.dwg



Z:\PROJECTS\19004\02\SURVEY\CAD_FILES\19004.02.dwg

**BOUNDARY AND TOPOGRAPHIC SURVEY
DOUGLAS PARK**

A PORTION OF TRACT 5
ESTATE OF CHARLES G. TOUSEY
(PLAT BOOK 1 PAGE 151 M.D.C.R.)
MIAMI - DADE COUNTY, FLORIDA

SHEET NO. 2
OF 2 SHEETS
PROJECT NO. 19004C

DATE	3/20/2015
SCALE	AS SHOWN
FIELD BOOK	1428
DRAWN BY	DPP
CHECKED BY	RRK

DATE	REVISIONS
4/09/2016	ADDED NOTES & TIE LOCATIONS

KEITH and SCHNARS, P.A.
ENGINEERS, PLANNERS, SURVEYORS
LB 1337
6500 NORTH ANDREWS AVENUE, FORT LAUDERDALE, FL. 33309-2132 (954)776-1616