



October 15, 2014

Mr. Wilbur Mayorga, P.E., Chief
Environmental Monitoring and Restoration Division
Department of Regulatory and Economic Resources
701 NW 1st Court, 4th Floor
Miami, Florida 33136-3912

RE: Supplemental Information for Site Assessment Report (SAR) dated July 10, 2014,
Douglas Park (HWR-773) located at 2795 SW 37th Avenue, Miami. Miami-Dade County,
Florida

Dear Mr. Mayorga:

This letter and supporting documentation is being submitted on behalf of the City of Miami, as a response to Item No. 1 of your August 5, 2014 letter that was submitted as a response to the referenced SAR prepared by URS Corporation (URS).

DERM Comment No. 1: Onsite assessment of solid waste and contaminants of concern is sufficient to develop an onsite Corrective Action Plan (CAP). Provided updated soil cover contour maps that include tabular data adjacent to each point showing the solid waste thickness (i.e., 0-6 inches – no solid waste, 6-24 inches – 10% solid waste (glass, tiles, etc); 2 feet to 20 feet – 80% solid waste, etc.)

URS Response: Based on the field work completed at the site in December 2013 and April 2014, URS estimated the percentages of solid waste at the three (3) depths requested by DERM. These estimates were obtained from field logs that were previously submitted and are on-file at DERM. A tabular summary of the various soil borings evaluated using our professional judgment is provided as an attachment to this letter. Based on this table URS attempted to prepare the tabular data for each point; however, due to the proximity of the boring logs and the data in the table, the tabular data format appeared to be too busy and complex. Therefore, we prepared three (3) separate figures – one each for 0-6 inches, 6-24 inches and 2 feet to 20 feet or the bottom of the solid waste layer. As you will note, there are pockets of solid waste in varying percentages across the site and drawing contour lines did not appear, in our opinion, to provide an accurate representation of the distribution of solid waste in the three (3) layers across the site. We have, therefore, not shown the contour lines on these figures.

The City will develop a CAP for the site using the information presented in these figures as well as related documentation included in our previous reports submitted to DERM.

URS Corporation
7650 Corporate Center Drive, Suite 400
Miami, FL 33126-1220
Tel: 305.884.8900
Fax: 305.884.2665



Please let us know if the figures and the supporting data satisfies the information requested in Comment No. 1 of the August 5th letter. Thank you.

Sincerely,

A handwritten signature in black ink that reads 'Vivek Kamath'.

Vivek Kamath, P.E.
Senior Project Manager

cc: Harry James, City of Miami

Encl: TABLE I - Douglas Park Solid Waste Thickness Layer (December 2013 - April 2014)
Figure 1 – Estimated Solid Waste Quantities (0 – 0.5 feet bls)
Figure 2 – Estimated Solid Waste Quantities (0.5 – 2.0 feet bls)
Figure 3 – Estimated Solid Waste Quantities (2.0 – 20.0 feet bls)

TABLE I - Douglas Park Solid Waste Thickness Layer (December 2013 - April 2014)

Est. Solid Waste /Depth (feet, bls)	SB-1	SB-2	SB-3	SB-4A	SB-4B	SB-4C	SB-5	SB-6	SB-7	SB-8A	SB-8B	SB-9	SB-10	SB-11	SB-12	SB-13	SB-14	SB-15	SB-16	SB-17	
	12/18/13	12/18/13	12/18/13	12/18/13	12/18/13	12/18/13	12/18/13	12/18/13	12/18/13	12/18/13	12/18/13	12/18/13	12/18/13	12/18/13	12/18/13	12/18/13	12/18/13	12/18/13	12/18/13	12/18/13	12/18/13
0 to 0.5	25%	0%	0%	0%	0%	0%	0%	0%	10%	10%	10%	0%	0%	0%	0%	0%	0%	0%	0%	0%	0%
0.5 to 2.0	40%	40%	20%	0%	0%	0%	0%	0%	40%	30%	30%	30%	30%	0%	20%	40%	40%	40%	40%	40%	40%
2.0 to 20*	0%	25%	0%	0%	0%	0%	0%	0%	60%	70%	50%	70%	0%	70%	70%	50%	50%	70%	60%	60%	60%

Est. Solid Waste /Depth (feet, bls)	SB-18	SB-19	SB-20	SB-21	SB-22	SB-23	SB-24	SB-25	SB-26	SB-27	SB-28	SB-29	SB-30	SB-31	SB-32	SB-33	SB-34	SB-35	SB-36
	4/23/14	4/23/14	4/23/14	4/23/14	4/23/14	4/23/14	4/23/14	4/23/14	4/23/14	4/23/14	4/23/14	4/23/14	4/23/14	4/23/14	4/23/14	4/23/14	4/23/14	4/23/14	4/23/14
0 to 0.5	0%	0%	0%	0%	0%	0%	0%	0%	0%	5%	0%	0%	0%	0%	0%	0%	0%	0%	0%
0.5 to 2.0	10%	20%	90%	75%	90%	45%	0%	45%	0%	80%	45%	30%	0%	80%	0%	50%	0%	50%	50%
2.0 to 20*	NA	NA	NA	NA	NA	NA	NA	NA	NA	NA	NA	NA	NA	NA	NA	NA	NA	NA	NA

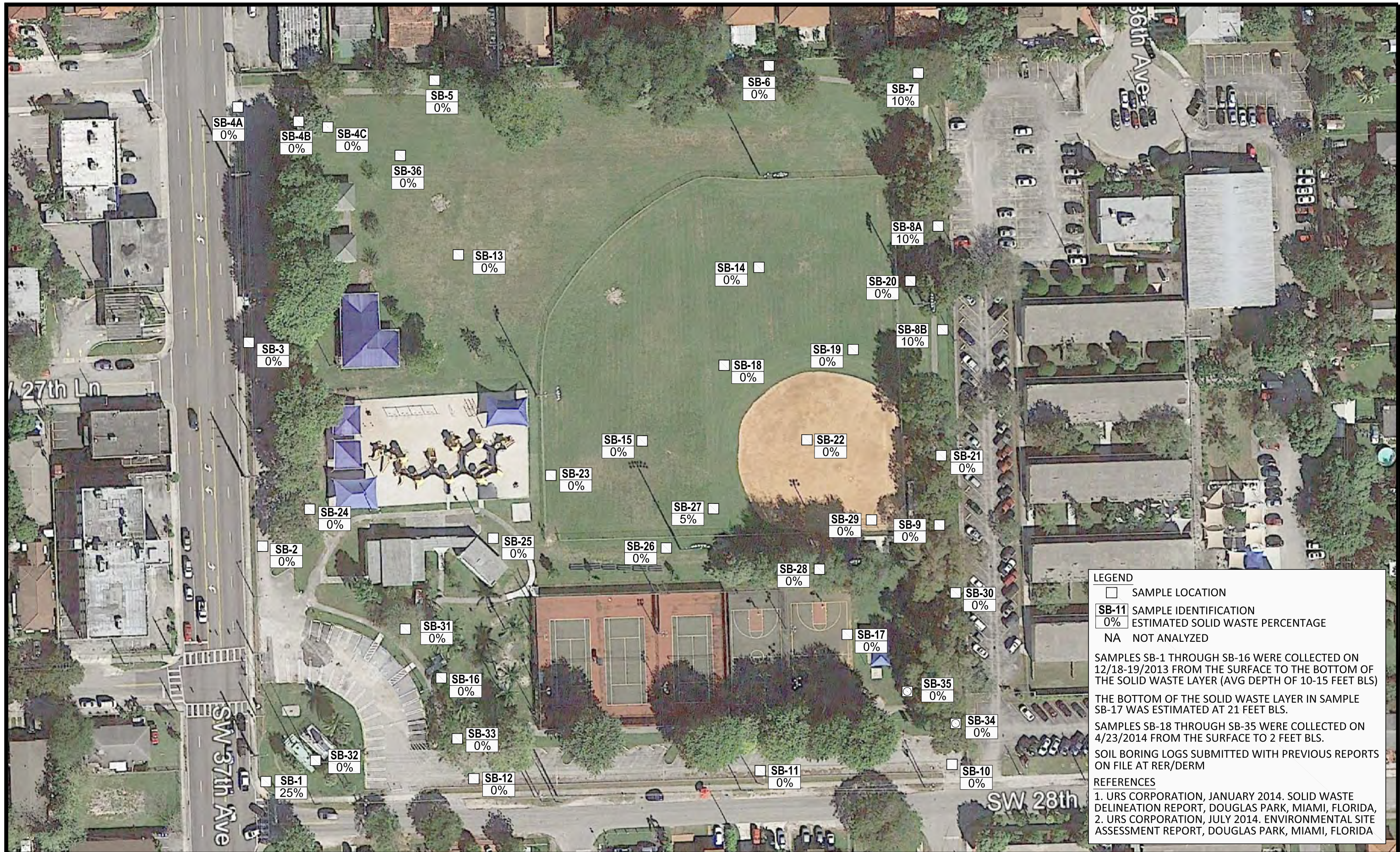
* Depths of the boring logs varied based on the bottom of the solid waste layer as indicated on the boring logs

Notes:

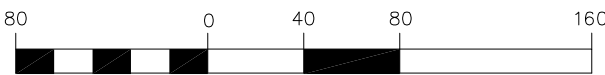
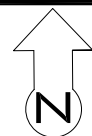
1. Samples SB-1 through SB-16 were collected on 12/18 -19/2013 from the surface to the bottom of th solid waste layer (avg depth of 10-15 feet bls)
2. Samples SB-18 through SB-36 wer collected on 4/23/2014 from the surface to 2 feet bls.
3. Soil boring logs are on file at RER/DERM

REFERENCES

1. URS Corporation, January 2014. Solid Waste Delineation Report, Douglas Park, Miami, Florida
2. URS Corporation, July 2014. Environmental Site Assessment Report, Douglas Park, Miami, Florida



CITY OF MIAMI - DOUGLAS PARK
2795 S.W. 37TH AVE.
MIAMI, FL 33133



(SCALE IN FEET)

TITLE:
ESTIMATED SOLID WASTE QUANTITIES
(0 - 0.5 FEET BELOW LAND SURFACE)

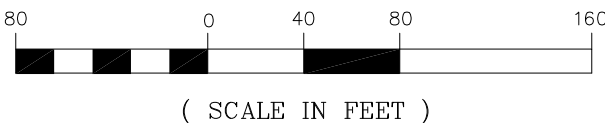
CITY OF MIAMI
CAPITAL IMPROVEMENTS PROGRAM
ENVIRONMENTAL ASSESSMENT



FIGURE
1



CITY OF MIAMI - DOUGLAS PARK
2795 S.W. 37TH AVE.
MIAMI, FL 33133

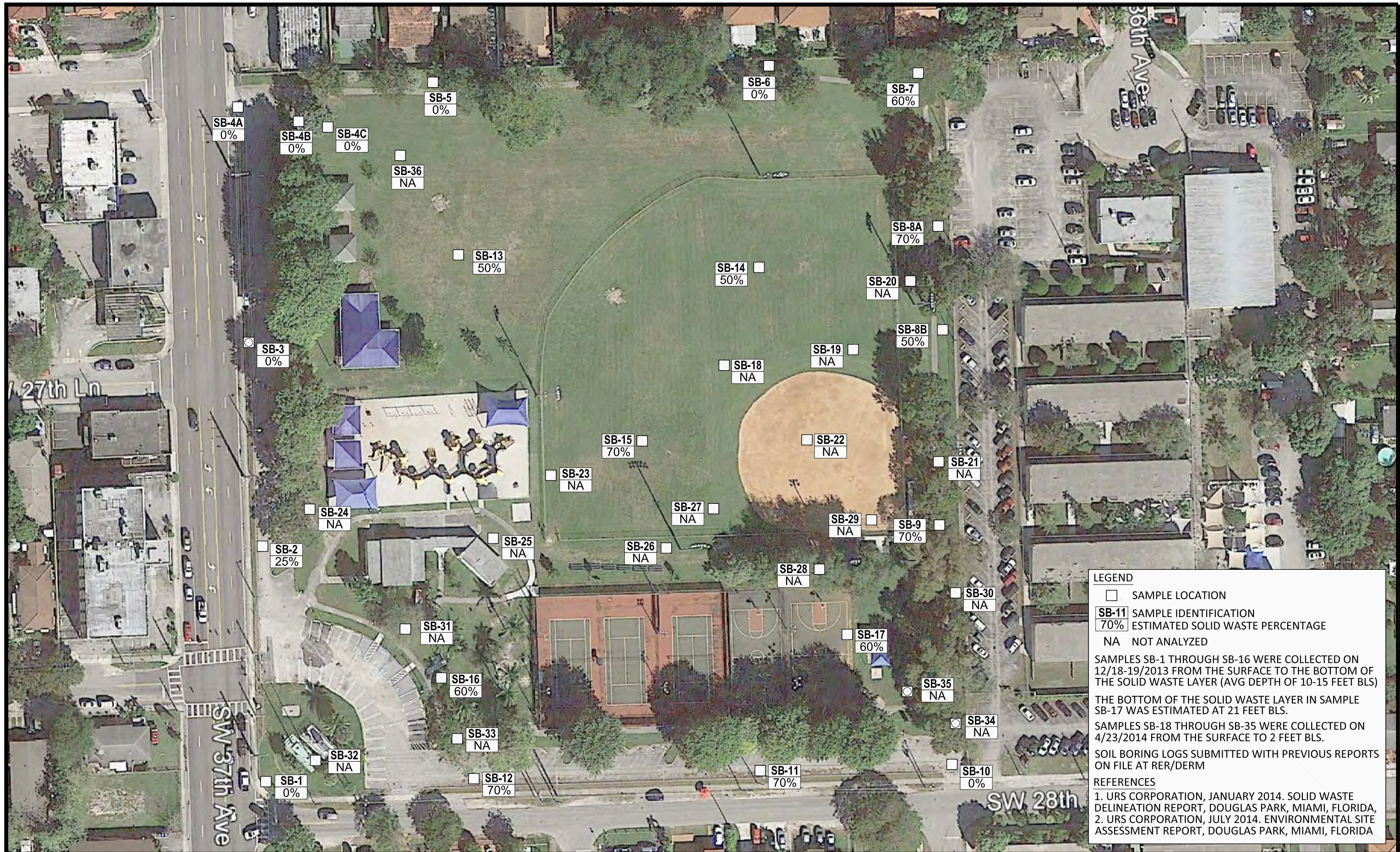


TITLE:
ESTIMATED SOLID WASTE QUANTITIES
(0.5-2.0 FEET BELOW LAND SURFACE)

CITY OF MIAMI
CAPITAL IMPROVEMENTS PROGRAM
ENVIRONMENTAL ASSESSMENT



FIGURE
2



LEGEND

- SAMPLE LOCATION
- SB-11** SAMPLE IDENTIFICATION
- 70% ESTIMATED SOLID WASTE PERCENTAGE
- NA NOT ANALYZED

SAMPLES SB-1 THROUGH SB-16 WERE COLLECTED ON 12/18-19/2013 FROM THE SURFACE TO THE BOTTOM OF THE SOLID WASTE LAYER (AVG DEPTH OF 10-15 FEET BLS)

THE BOTTOM OF THE SOLID WASTE LAYER IN SAMPLE SB-17 WAS ESTIMATED AT 21 FEET BLS.

SAMPLES SB-18 THROUGH SB-35 WERE COLLECTED ON 4/23/2014 FROM THE SURFACE TO 2 FEET BLS.

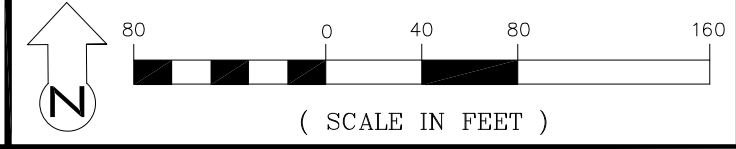
SOIL BORING LOGS SUBMITTED WITH PREVIOUS REPORTS ON FILE AT RER/DERM

REFERENCES

1. URS CORPORATION, JANUARY 2014. SOLID WASTE DELINEATION REPORT, DOUGLAS PARK, MIAMI, FLORIDA,
2. URS CORPORATION, JULY 2014. ENVIRONMENTAL SITE ASSESSMENT REPORT, DOUGLAS PARK, MIAMI, FLORIDA



CITY OF MIAMI - DOUGLAS PARK
2795 S.W. 37TH AVE.
MIAMI, FL 33133



TITLE:
ESTIMATED SOLID WASTE QUANTITIES
(2.0-20 FEET BELOW LAND SURFACE)

CITY OF MIAMI
CAPITAL IMPROVEMENTS PROGRAM
ENVIRONMENTAL ASSESSMENT



FIGURE
3