

PLANS FOR MUNICIPAL SWIMMING POOL

CITY OF MIAMI, FLORIDA

JULY 1949

RECOMMENDED *George J. Pennington*
DIRECTOR, DEPARTMENT OF ENGINEERING

REVIEWED AND APPROVED *Knox Eldredge*
DIRECTOR, DEPARTMENT OF PUBLIC WELFARE

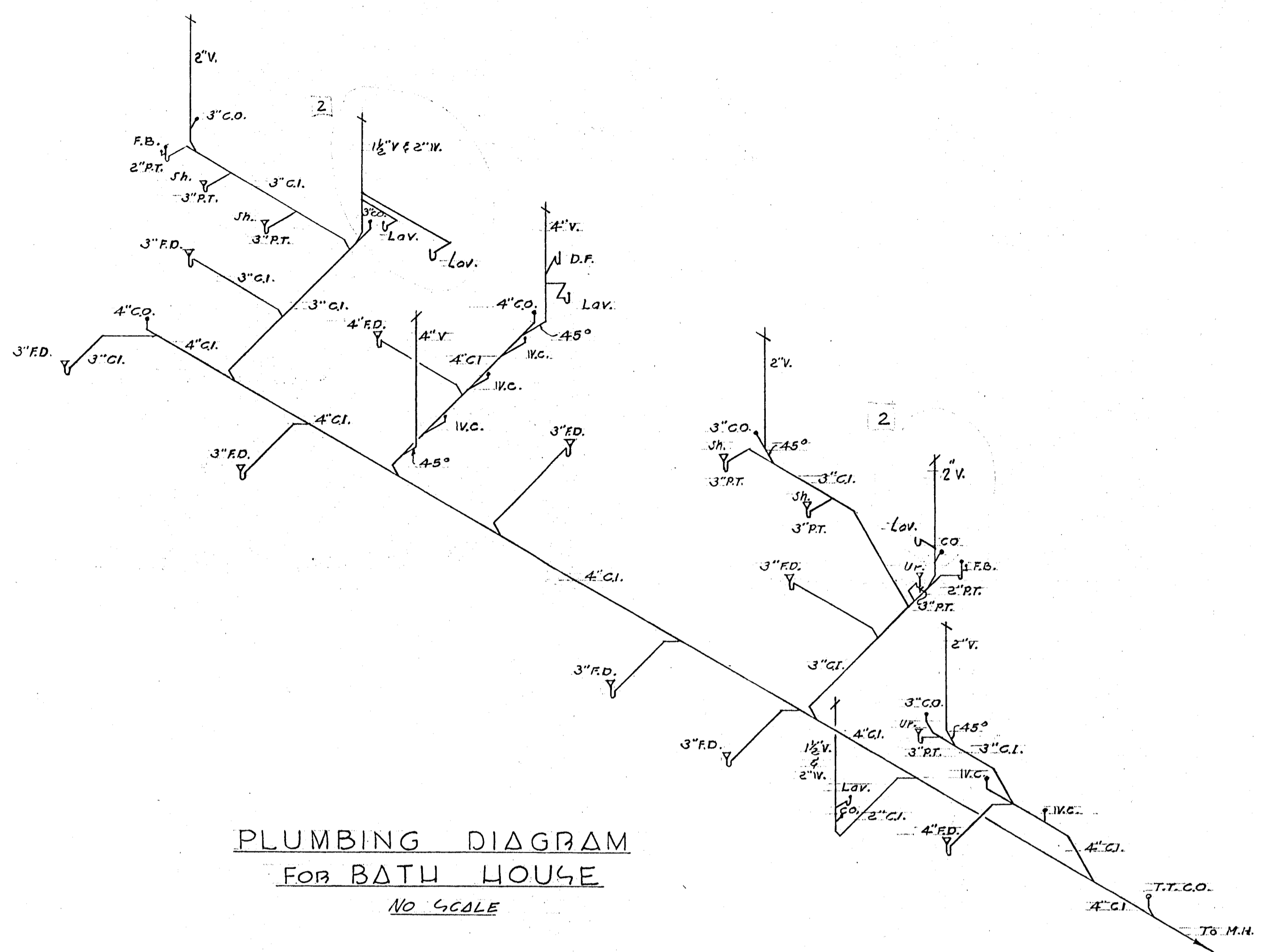
COMMISSIONERS:

ROBERT L. FLOYD - MAYOR
WILLIAM W. CHARLES
R. C. GARDNER
PERRINE PALMER, JR.
H. LESLIE QUIGG

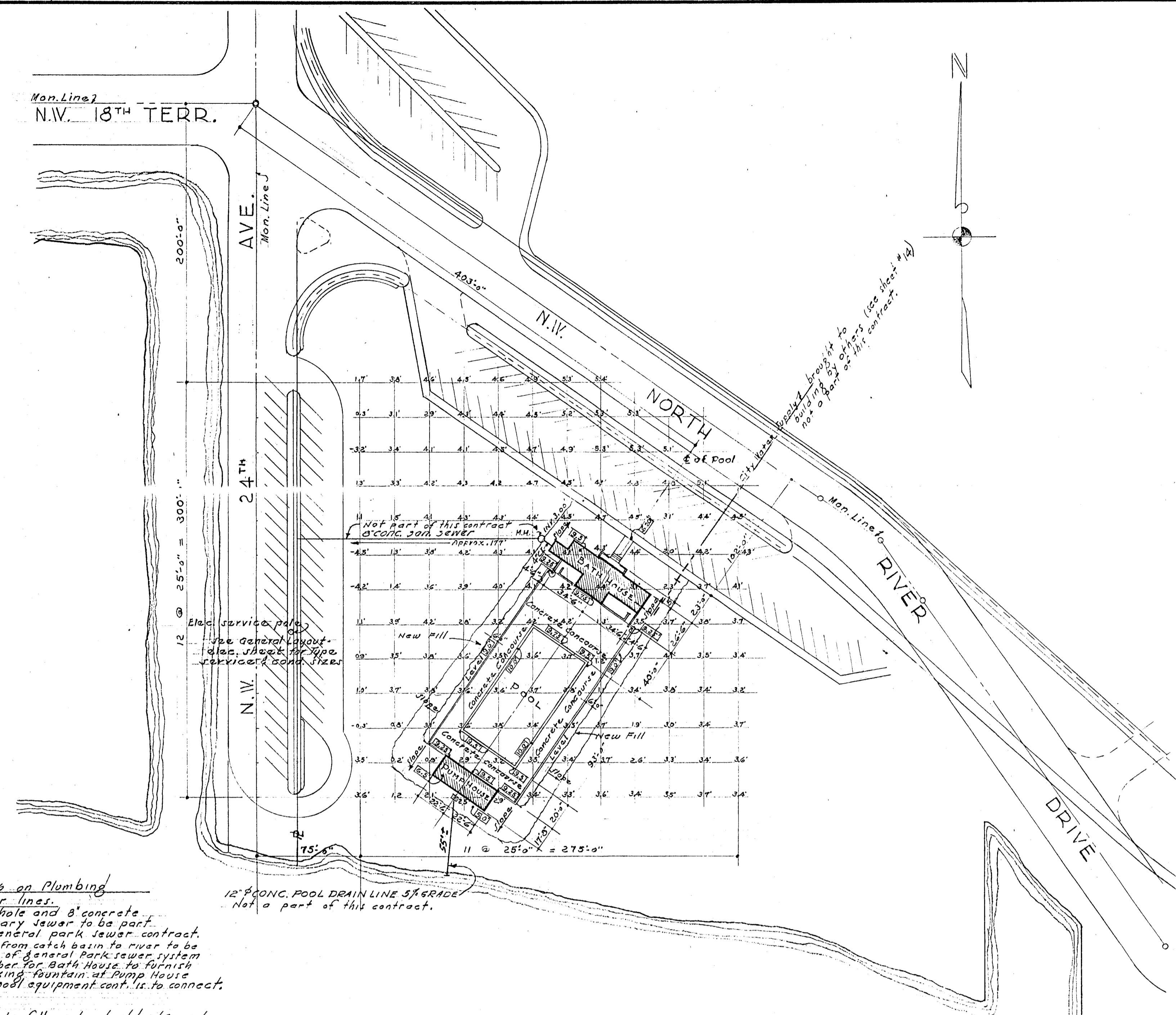
APPROVED *W. H. McQuinn*
ASST. CITY MANAGER

ARCHITECT *M. M. Vasiloff*

ENGINEER *Arthur E. Paulsen*



PLUMBING DIAGRAM
FOR BATH HOUSE
NO SCALE



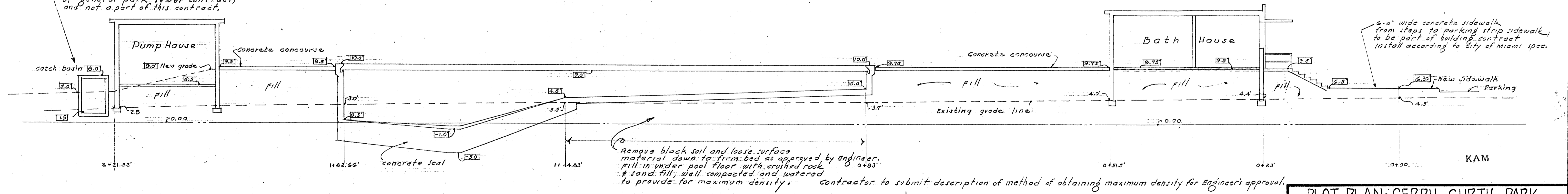
PLOT PLAN
SCALE 1" = 50'

Notes on Plumbing Sewer lines.
Man hole and 8" concrete sanitary sewer to be part of general park sewer contract. Drain from catch basin to river to be part of general park sewer system. Plumber for Bath House to furnish drinking fountain at Pump House but pool equipment cont. is to connect.

FILL
provide fill under buildings and concrete concourse and fill for shoulders and embankment around pool and buildings. Fill must be in layers not to exceed 1.0" in depth. Each layer to be watered & compacted in a manner to provide for minimum settlement.

Top soil & planting by others, not a part of this contract.

catch basin to be installed by contractor for pump house equipment. Install 12" conc. pipe drain stub. Sewer line to river to be part of general park sewer contract, and not a part of this contract.



LONGITUDINAL SECTION THRU OF POOL
Scale 1/8" = 1'-0"

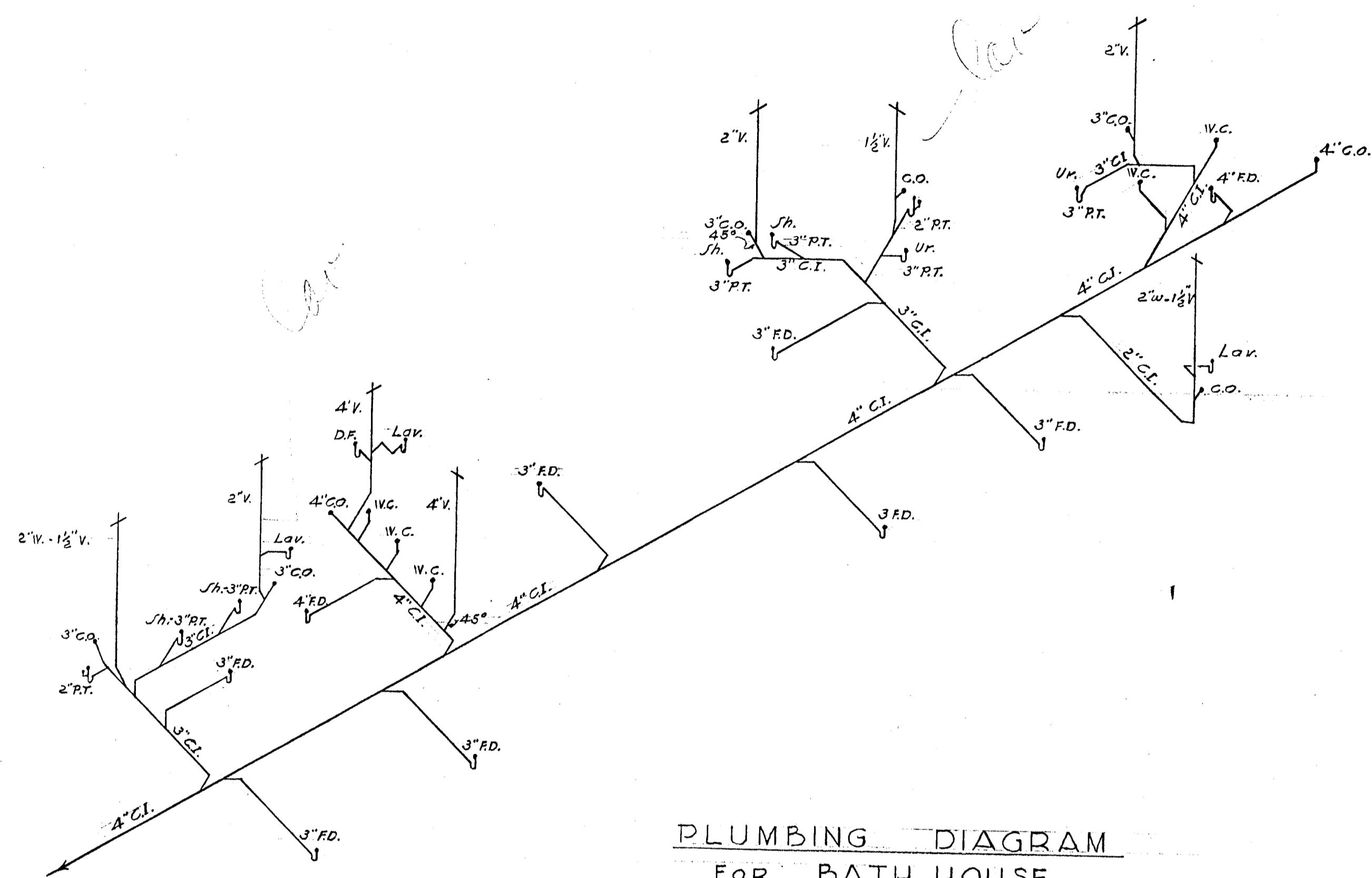
NOTE:
± 16.20 Denotes proposed elevations
± 4.5 Denotes existing elevations

PLOT PLAN - GERZY CURTIS PARK		
MUNICIPAL SWIMMING POOL		
DR. B.F.H. TR. CK. 2 SCALE As Shown DATE July '49	PREPARED BY DEPARTMENT OF ENGINEERING ENGINEERING DIVISION CITY OF MIAMI, FLORIDA	SHEET NO 2 OF 15 SHEETS REC. 179

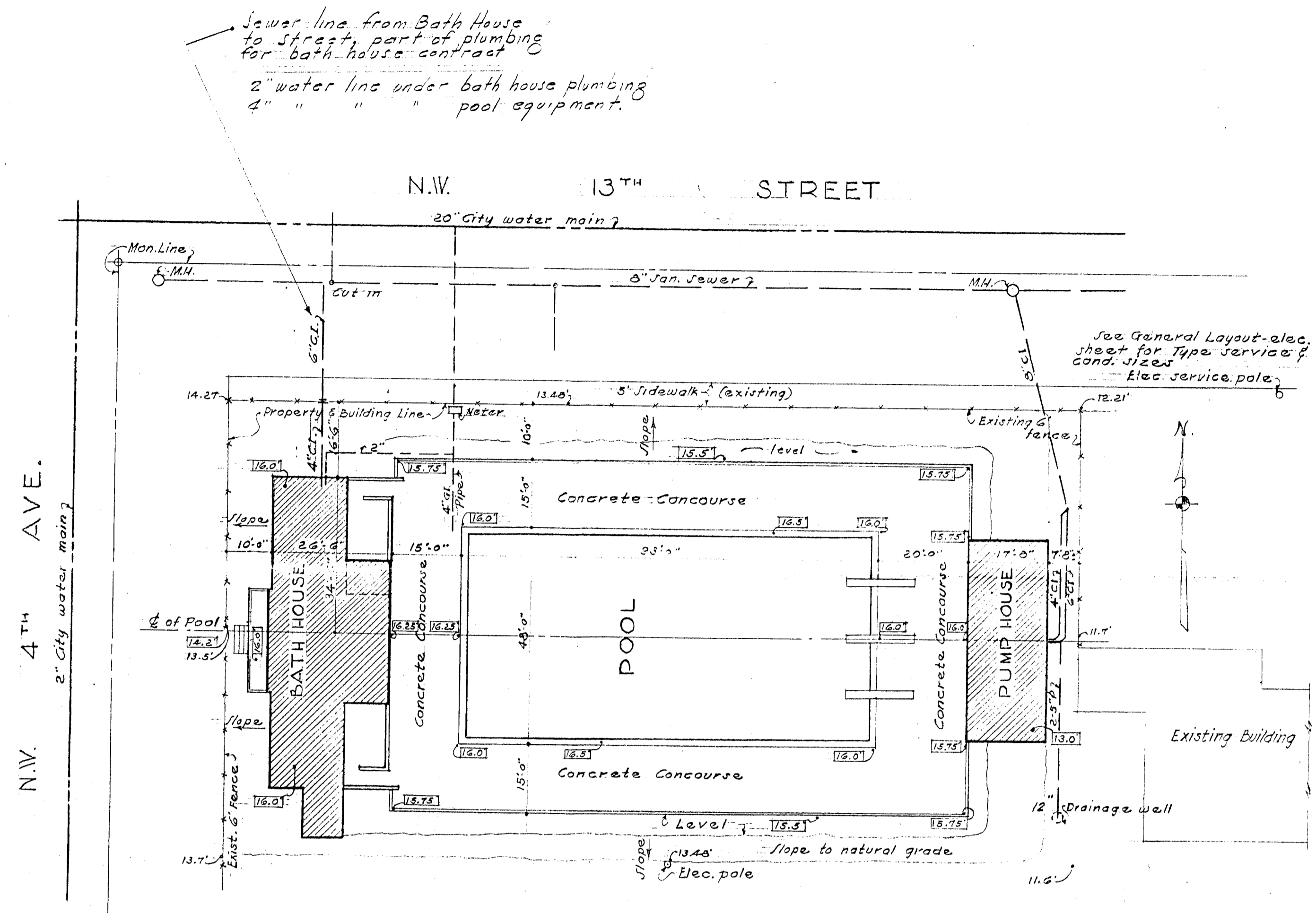
ARCHITECT: M.M. VAVILOFF
ENGINEER: ARTHUR E. DARLOW

11/12/49 [2] New lavatories added change 1 1/2" v to 2" v
- REVISIONS -

Ed. Santos 4 of 3



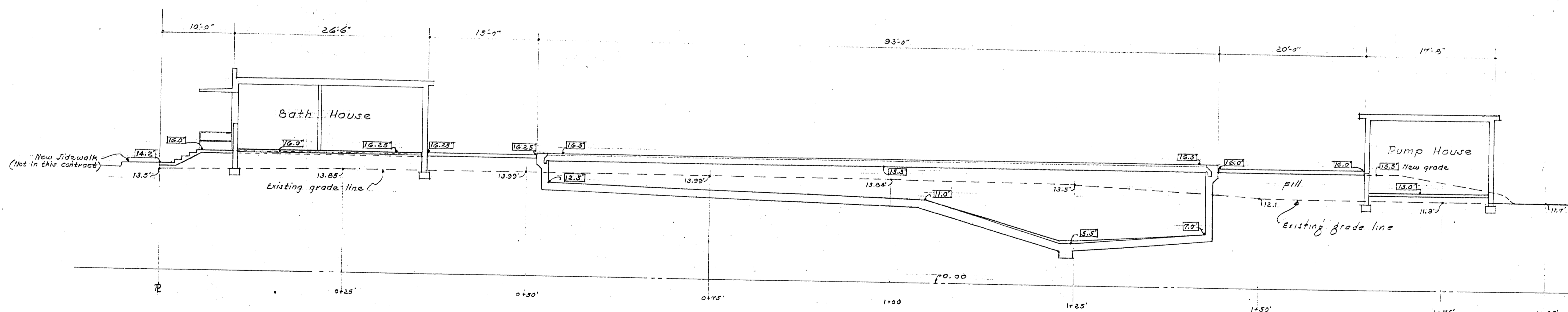
PLUMBING DIAGRAM
FOR BATH HOUSE
No Scale



PLOT PLAN
Scale 1"=20'

Water Sewers
Sewer line from bath house to street in Bath House plumbing contract
Drains from pool and Pump House to street and to drainage well to be in pool equipment contract.
Drainage well to be 12" diam, intake capacity 2000 gal. per minute, approx. 100'-0" deep, to salt water.
Drainage well to be part of pool equipment contract.
Drinking fountain at Pump House to be furnished by plumber for Bath House, but will be installed & connected by mechanical equipment contractor.

Excavation & Fill.
Excavated material to be used for fill and embankment around pool.
Remove excess excavated material from site. Remove all asphalt surfacing of existing basketball courts from site.
Fill under slabs to be deposited in layers not to exceed 3" in depth. Each layer to be watered and tamped in a manner to provide for minimum settlement.
Existing playground equipment on site of new pool will be removed by city of Miami.



LONGITUDINAL SECTION THRU C OF POOL
Scale 1/4"=10'

NOTE:
± 14.20' Denotes proposed elevations
± 13.50' Denotes existing elevations

PLOT PLAN - DIXIE PARK

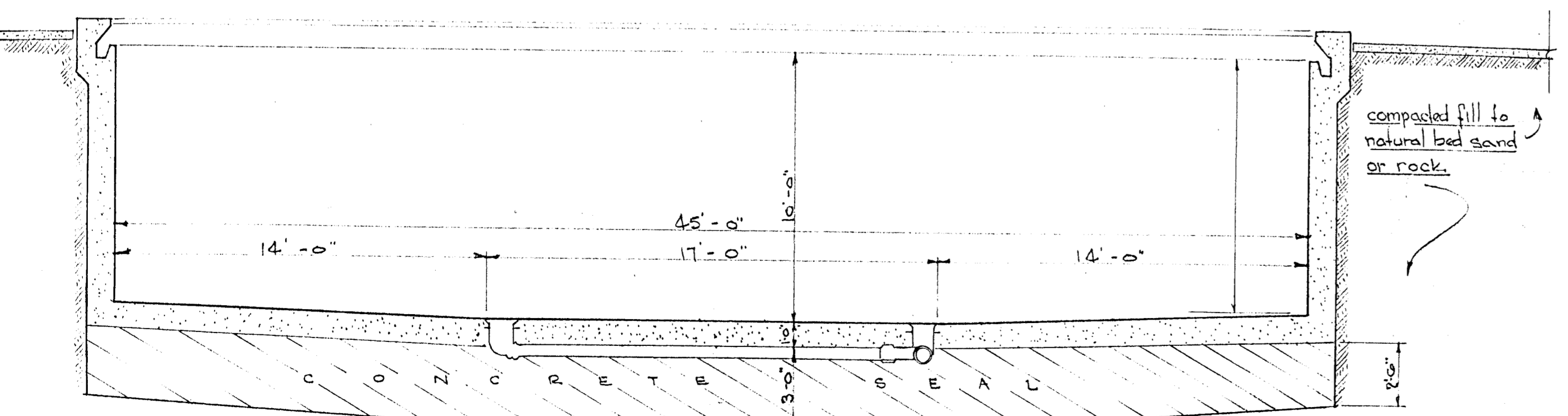
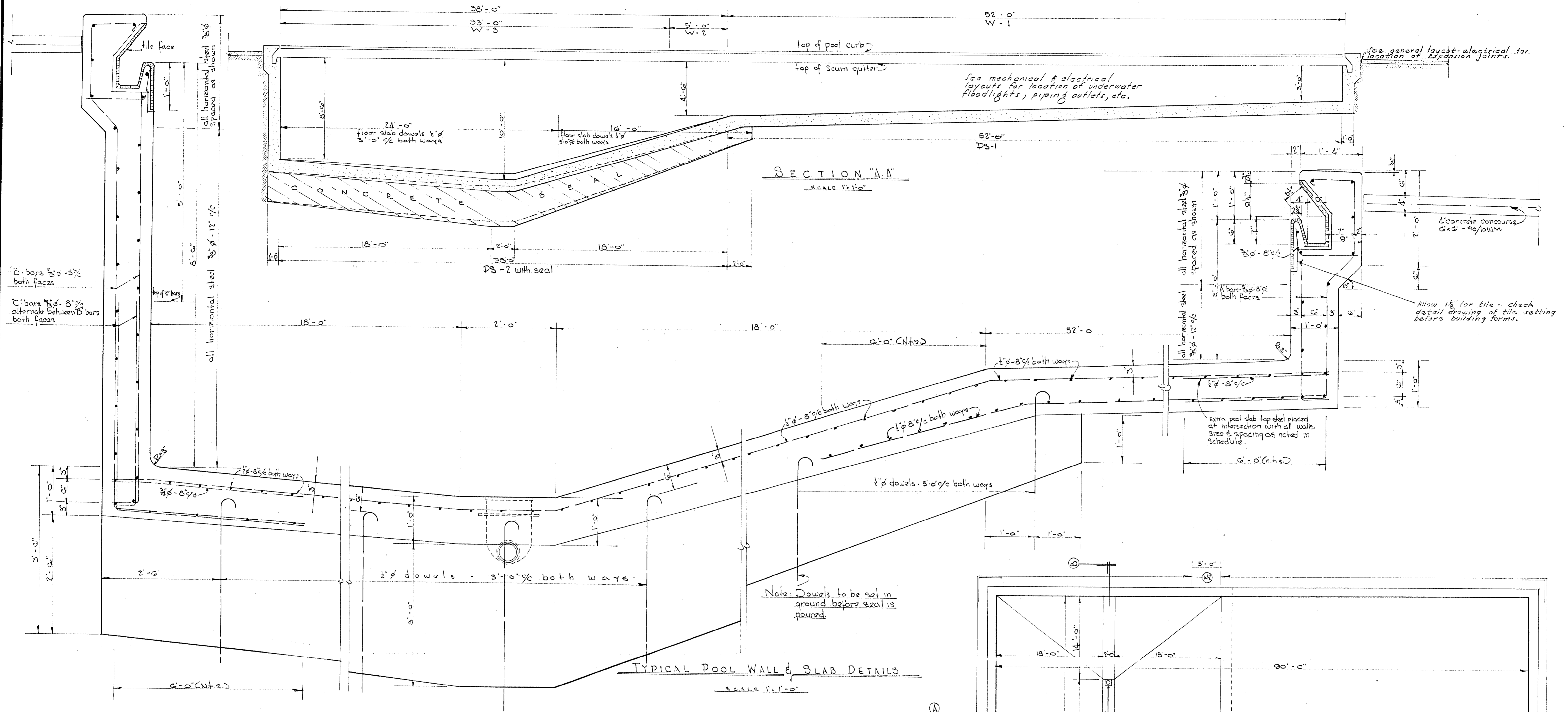
MUNICIPAL SWIMMING POOL

DESIGNER: DR. B.F.H. CK. 12 SCALE As Shown DATE July 49

PREPARED BY DEPARTMENT OF ENGINEERING ENGINEERING DIVISION CITY OF MIAMI, FLORIDA

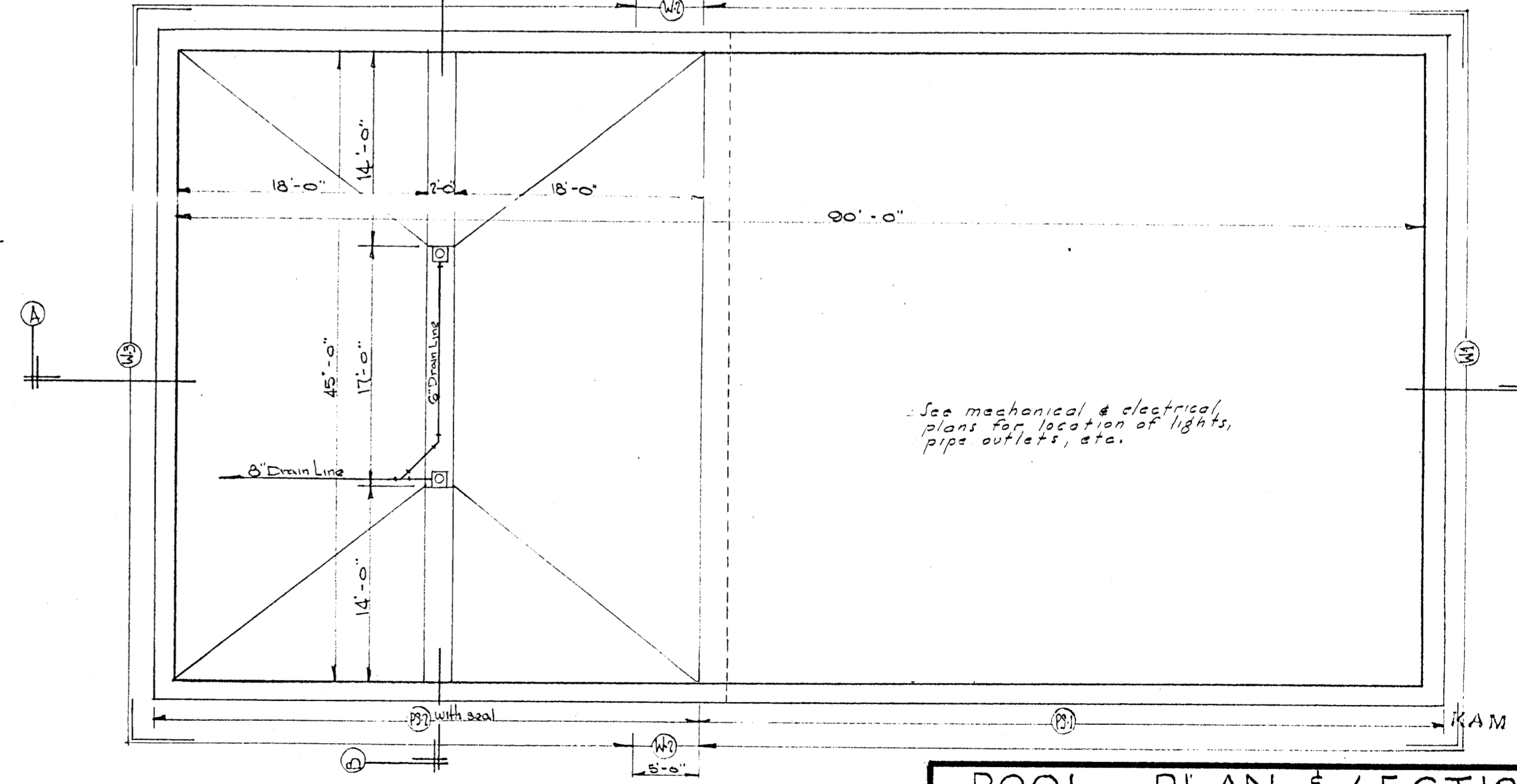
SHEET NO. 4 OF 15 SHEETS

REC. 179



Swimming Pool Steel Schedule

Mark	Size	Spac	Size	Spac	Size	Spac
W-1	3/8"	8"				
W-2			3/8"	8"		
W-3			3/8"	8"	3/8"	8"
W-1	3/8"	12"	or as shown			
W-2	3/8"	12"	or as shown			
W-3	3/8"	12"	or as shown			
Pool Slab						
PS-1	1/2"	8"	1/2"	8"	1/2"	8"
PS-2	1/2"	8"	1/2"	8"	1/2"	8"



ENGINEER A.E. DARLOW

SECTION "B-B"
SCALE 1/2"=1'-0"

SECTION "A-A"
SCALE 1/2"=1'-0"

TYPICAL POOL WALL & SLAB DETAILS
SCALE 1/2"=1'-0"

POOL PLAN
SCALE 1/8"=1'-0"

GERRY CURTIS PARK ONLY

POOL - PLAN & SECTIONS

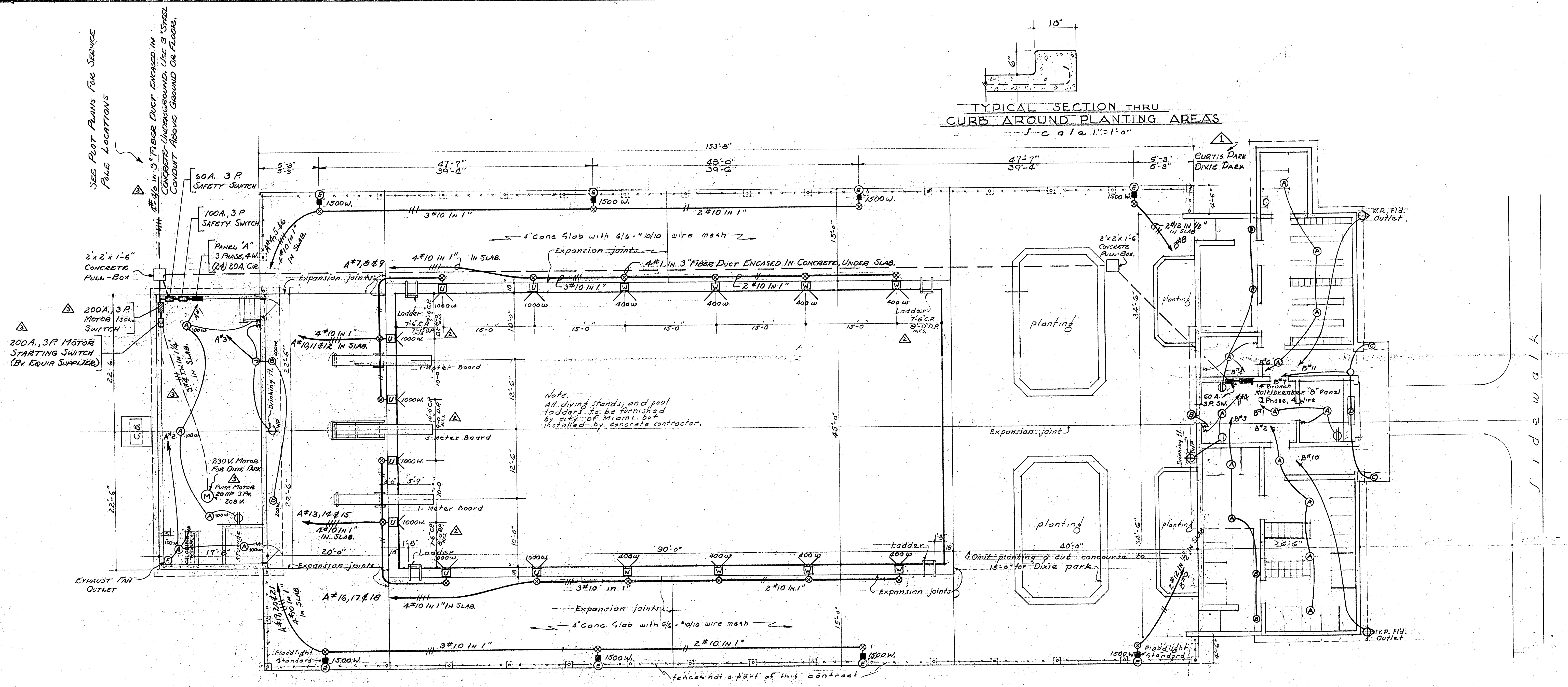
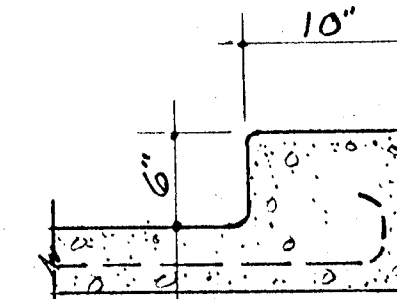
MUNICIPAL SWIMMING POOL

DESIGNED BY: DR. H.J.H. CK. 102
SCALE AS NOTED
DATE July 49

PREPARED BY: DEPARTMENT OF ENGINEERING
ENGINEERING DIVISION
CITY OF MIAMI, FLORIDA

SHEET NO. 6
OF 15 SHEETS
REC.
179

TYPICAL SECTION THRU CURB AROUND PLANTING AREAS
Scale 1"=1'-0"



FIXTURE SCHEDULE

MARK	DESCRIPTION	No. Req'd
A	CEILING FIXTURE - WHITE PORCELAIN WITH SHADEHOLDER GROOVE. OUTLET BOX MOUNTING AND KEYLESS. COMPLETE WITH 100W. LAMP UNIT TO BE ALABAX CAT. NO. AL-898 OR EQUAL.	18
B	REFLECTOR UNIT - RLM STANDARD SYMMETRICAL ANGLE WITH OUTLET BOX HOOD AND SOCKET FOR 100W. LAMP. WEATHERPROOF UNIT TO BE EQUAL TO WEST. CO. TYPE NO. LA-100 REFLECTOR AND TYPE OLH HOOD. WIRE GUARD TO BE FURNISHED FOR UNIT.	7
C	REFLECTOR UNIT - RLM STANDARD DOME WITH 1/2" CONDUIT HOOD AND SOCKET FOR 100W. LAMP. WEATHERPROOF UNIT TO BE EQUAL TO WEST. CO. TYPE NO. LD-100 REFLECTOR AND TYPE LH HOOD. WIRE GUARD TO BE FURNISHED FOR UNIT.	2
D	FLUORESCENT LUMINAIRE - (2) 40W. LAMP, CHANNEL TYPE BODY EQUAL TO WEST. CO. TYPE NO. BL-80, COMPLETE WITH HIGH POWER FACTOR BALLAST, STARTERS AND LAMPS. WIRE GUARD TO BE PROVIDED FOR ENTIRE UNIT.	1
E	OVERHEAD FLOODLIGHTING - ENCLOSED TYPE, WIDE BEAM, 1500W. FLOODLIGHT UNIT COMPLETE WITH LAMP AND RAIN LENS. UNIT TO BE MOUNTED ON 24 FT. HINGED ANCHOR-BASE TYPE FLOODLIGHT POLE EQUAL TO UNION METAL MFG. CO. DESIGN NO. 6029X11. COMPLETE.	8
U	UNDERWATER FLOODLIGHT - 1000W, WATER TIGHT, BRONZE UNIT FOR WET NICHE TYPE MOUNTING. COMPLETE WITH PLAIN, CLEAR LENS, LAMP, CABLE AND BRONZE RECEPTACLE WITH POSITIONING INSERTS. UNIT TO BE EQUAL TO WEST. CO. TYPE NO. CS-14.	8
W	UNDERWATER FLOODLIGHT - SAME AS "U" EXCEPT UNIT TO BE 400W. AND EQUAL TO WEST. CO. TYPE NO. WS-8.	8
X	CABLE FLOOR BOX - CAST BRONZE FOR FLUSH INSTALLATION WITH WATER TIGHT, NON-SKID, RECESSED COVER. UNIT TO BE EQUAL TO WEST. CO. STYLE NO. 888143, (8) BOXES TO HAVE 3 SIDES TAPPED FOR 1" CONDUIT AND (16) TO HAVE STRAIGHT-THRU SIDE TAPS AND BOTTOM TAP FOR 1" CONDUIT.	24

~ NOTE ~

ELECTRICAL LAYOUT FOR CURTIS PARK POOL IS SHOWN. SERVICE AVAILABLE IS 3 PHASE, 4 WIRE, 115/208 VOLT, FROM BALANCED Y-CONNECTION.

SERVICE AVAILABLE FOR DIXIE PARK POOL IS 3 PHASE, 4 WIRE, 115/230 VOLT, FROM A DELTA CONNECTION. CONDUCTORS, CONDUITS AND EQUIPMENT SHOWN ON LAYOUT SHALL BE CHANGED AS NECESSARY TO CONFORM TO CODE REQUIREMENTS FOR THIS TYPE OF SYSTEM.

METERING EQUIPMENT SUPPLIED BY POWER CO. TO BE INSTALLED INSIDE THE EQUIPMENT ROOM IN THE MANNER THEY SPECIFY.

FOR DETAILS OF FLOODLIGHT POLE FOOTINGS AND UNDERWATER FLOODLIGHT INSTALLATION SEE SHEET NO. 8

SEE SHEET NO. 8 FOR LIGHT POLE FOOTING DETAILS

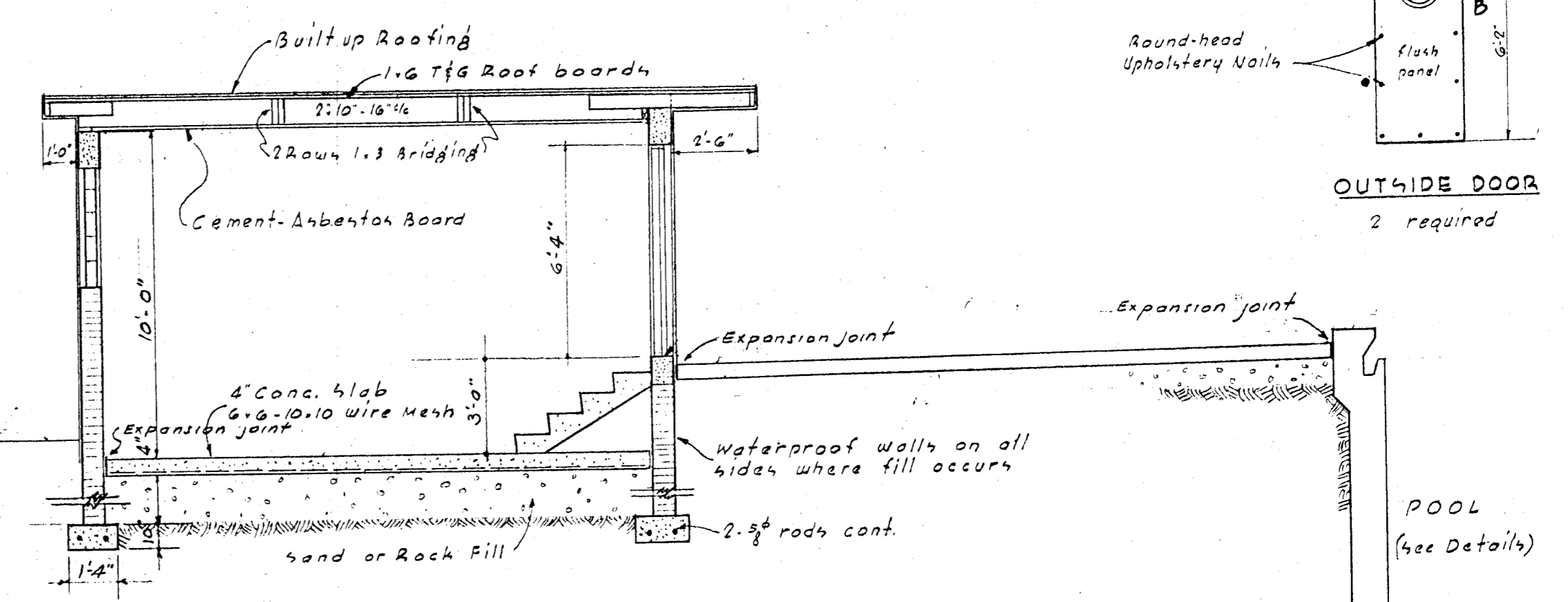
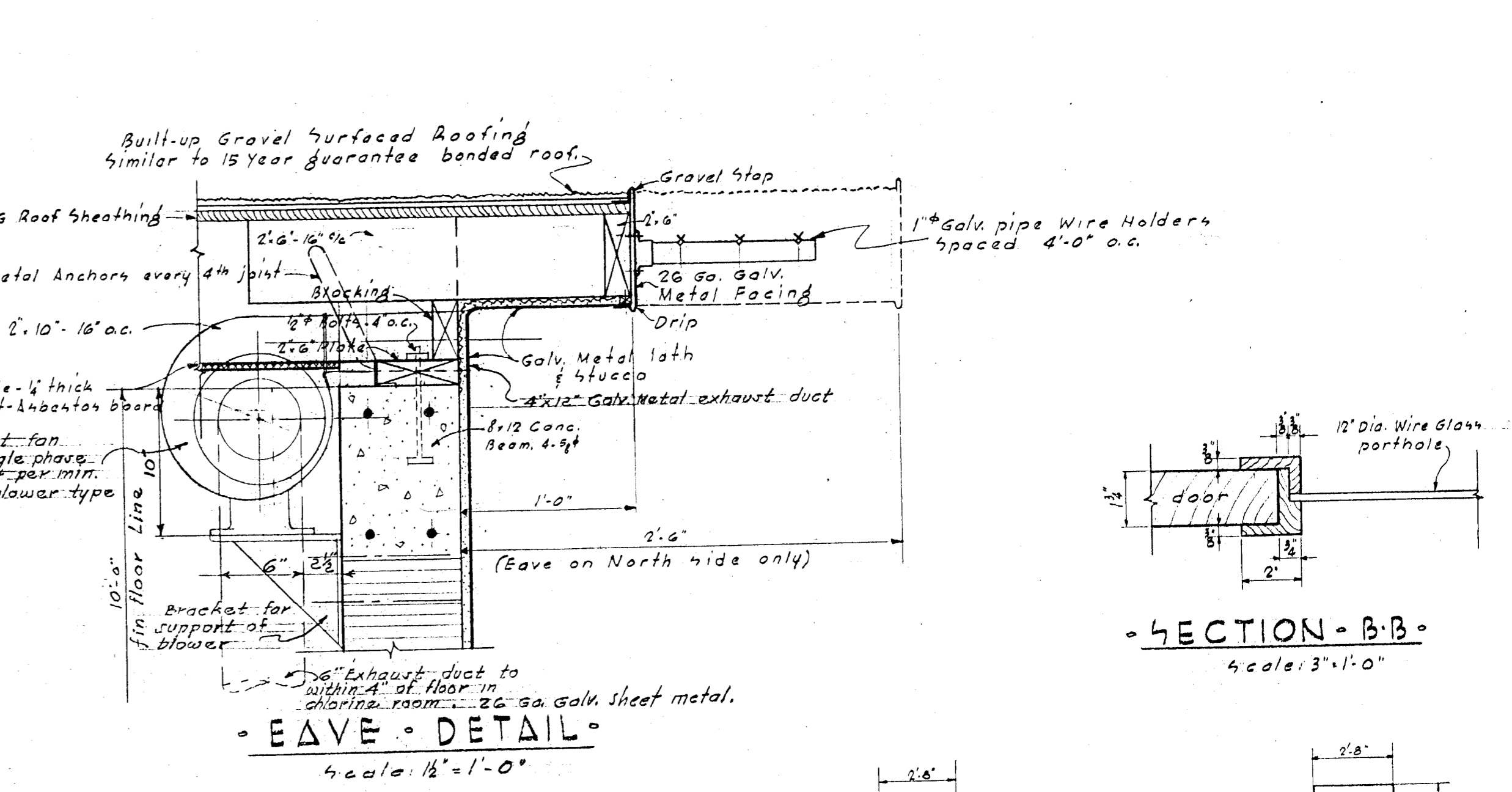
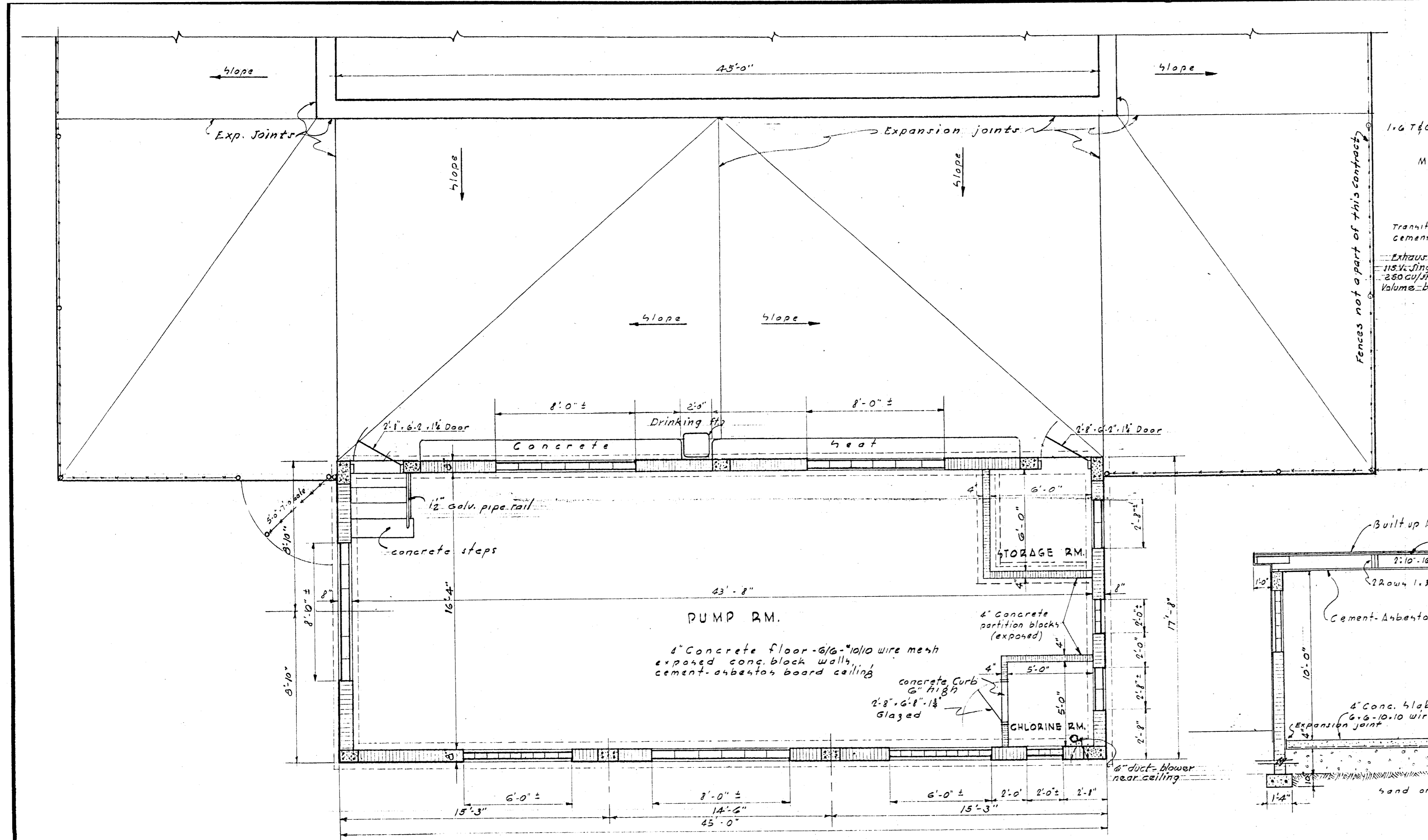
KAM

GENERAL LAYOUT - ELECTRICAL

MUNICIPAL SWIMMING POOL

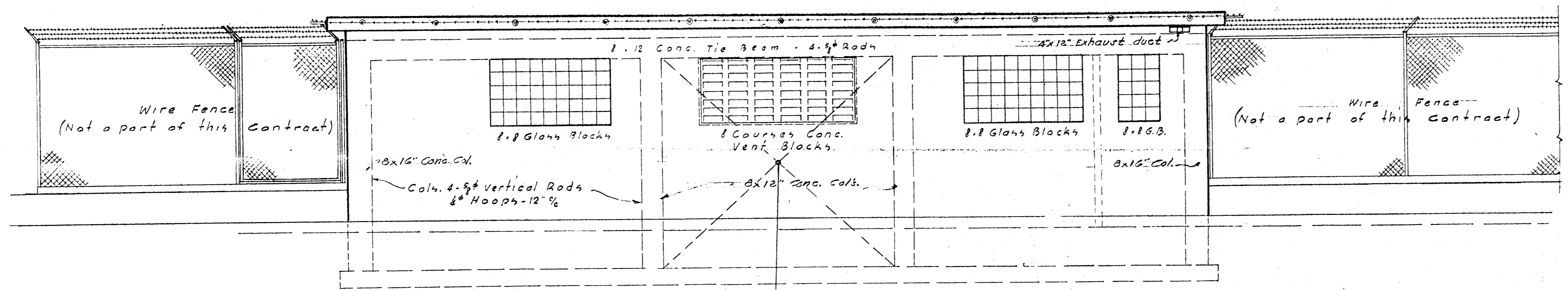
DATE	BY	MARK	DESCRIPTION
1-6-50	RBB	△	Wire & Sws. Changed To Serve Larger Pump Motor
1-6-50	RBB	△	Underwater Floodlights Relocated for Dixie Park
11-28-49	H.J.H.	△	Light pole spacing & note added.

DR. RBB TR. CK. RBB SCALE 1/8"=1'-0" DATE July 49	PREPARED BY DEPARTMENT OF ENGINEERING DIVISION OF ENGINEERING CITY OF MIAMI, FLORIDA	SHEET NO. 9 OF 15 SHEETS REC. 179
---	---	--

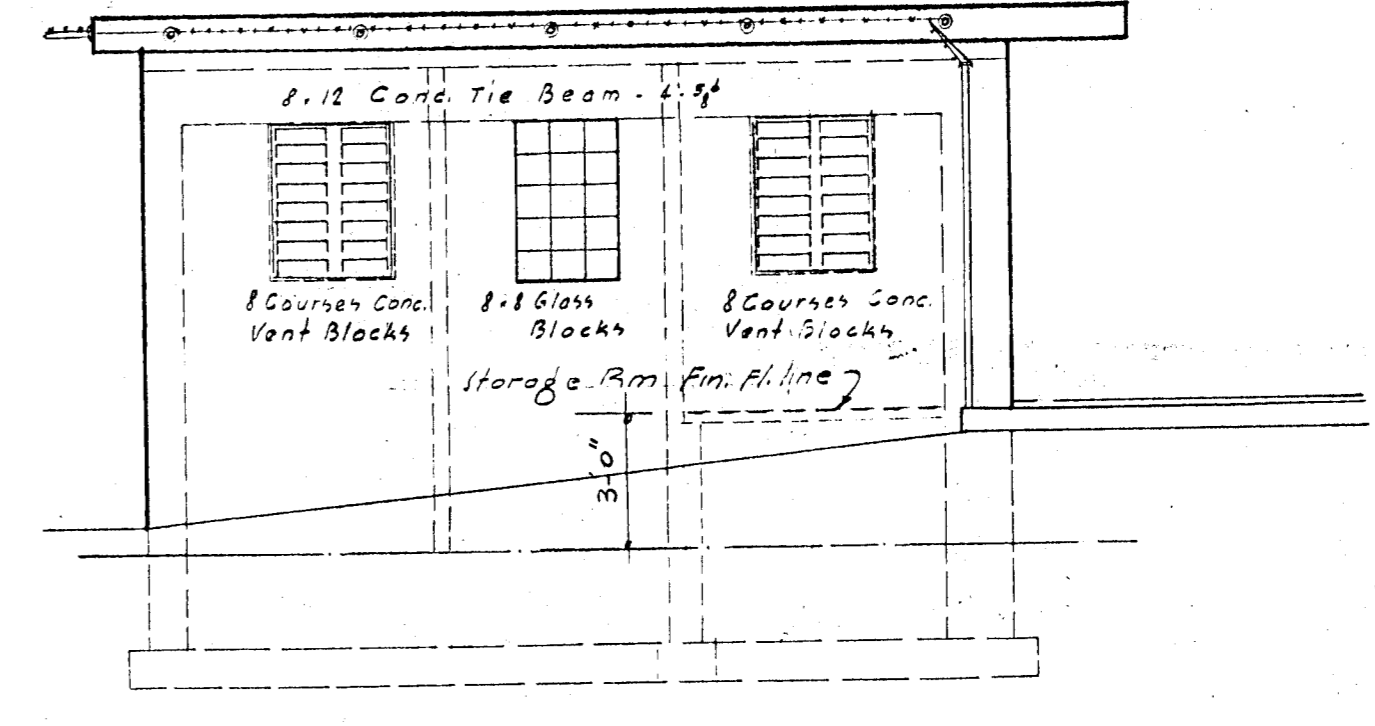


FLOOR PLAN OF PUMP HOUSE
Scale: 1/4" = 1'-0"

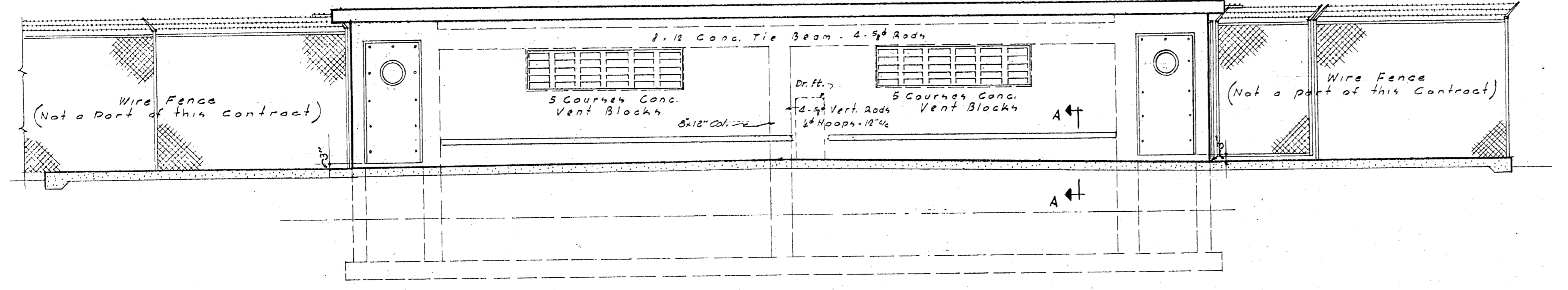
CROSS SECTION
Scale: 1/4" = 1'-0"



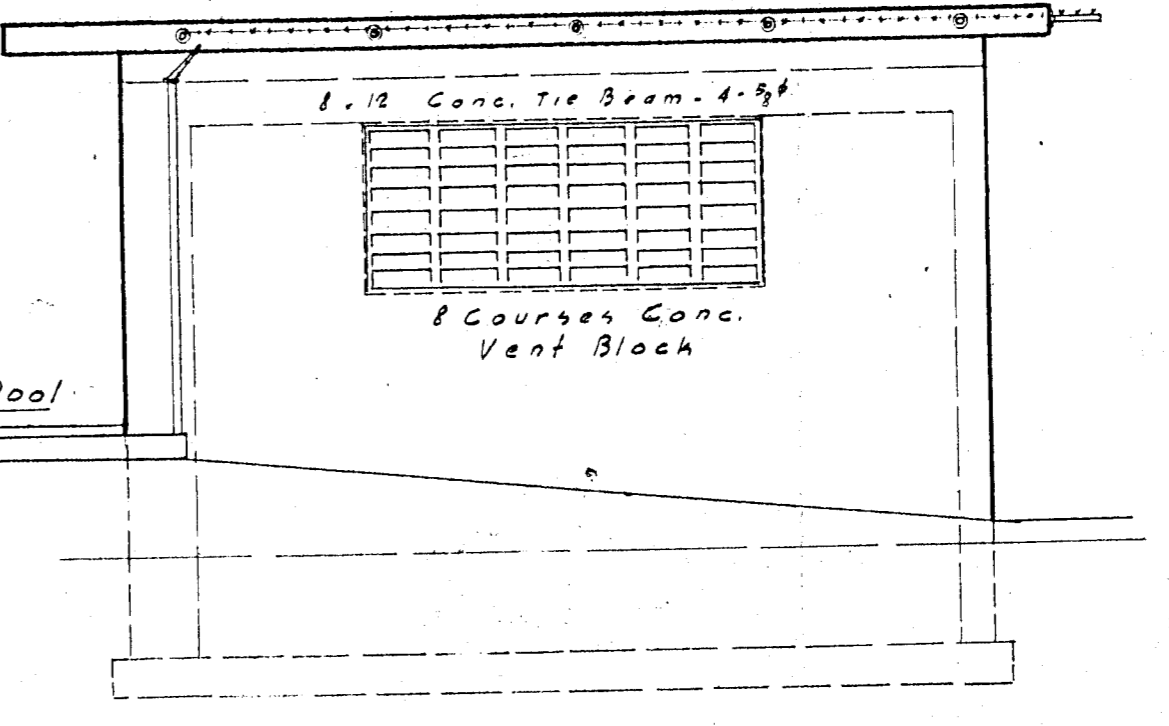
REAR ELEVATION



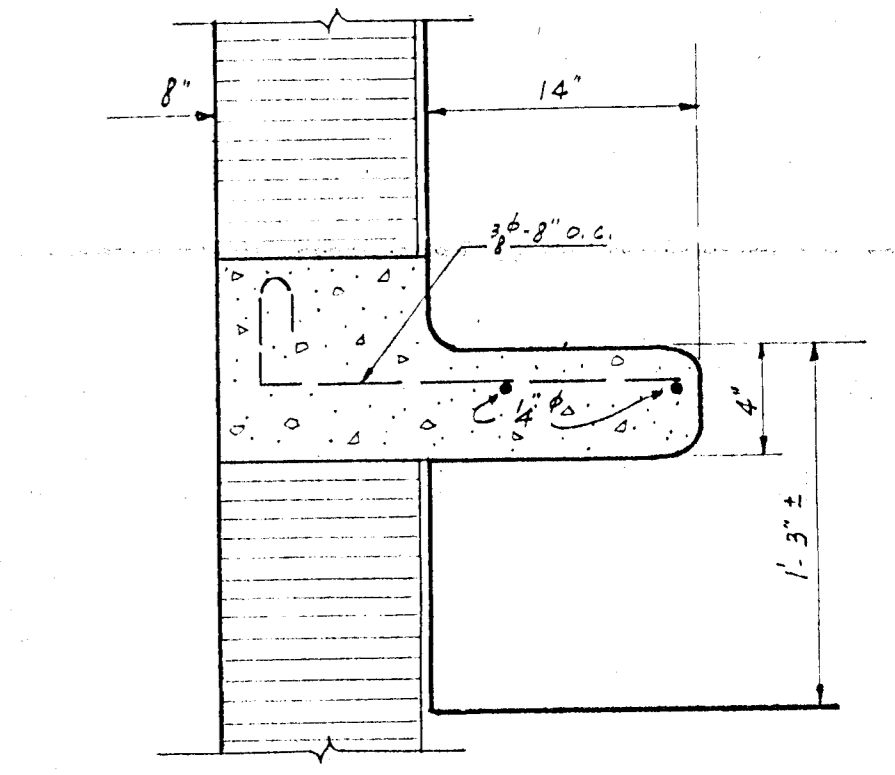
LEFT SIDE ELEVATION



FRONT ELEVATION - POOL SIDE



RIGHT SIDE ELEVATION

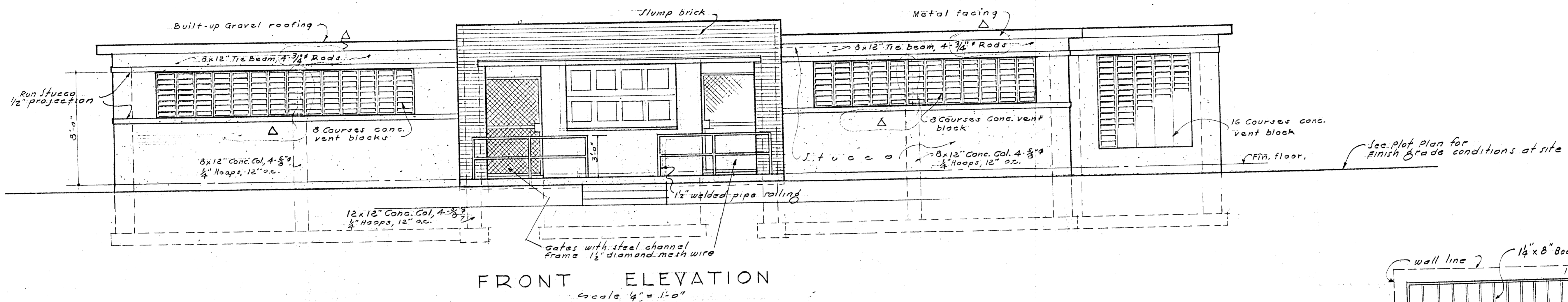


SECTION A-A - CONCRETE SEAT
Scale: 1/2" = 1'-0"

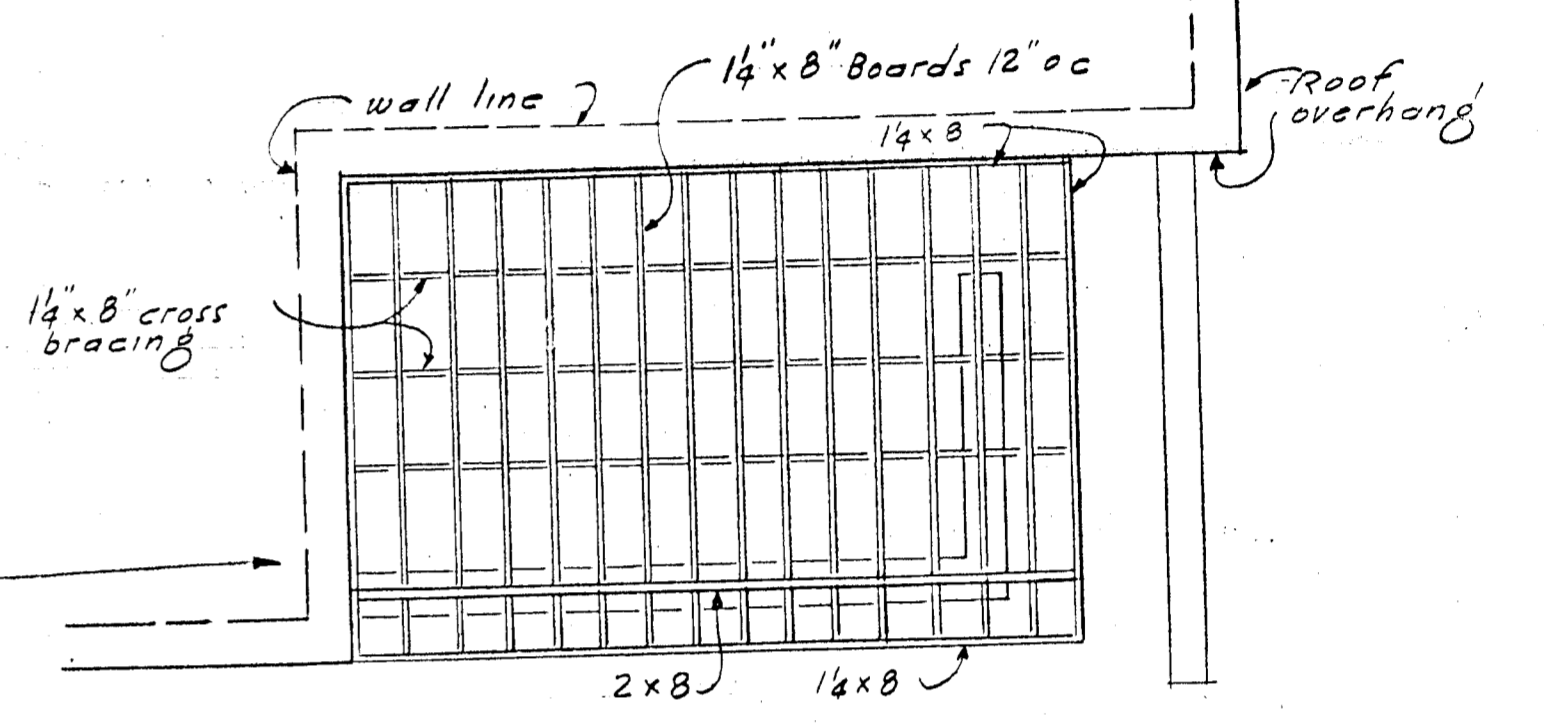
Notes:
No FENCE or wire guard work in this contract. Fences for swimming pools to be in separate contract.

PUMPHOUSE		
MUNICIPAL SWIMMING POOL		
DR. EGC.	PREPARED BY	SHEET NO.
TR. M.	DEPARTMENT OF ENGINEERING	172
CK. S.	DIVISION OF ENGINEERING	OF 15 SHEETS
SCALE - AS SHOWN	CITY OF MIAMI, FLORIDA	REC.
DATE - July 49		179

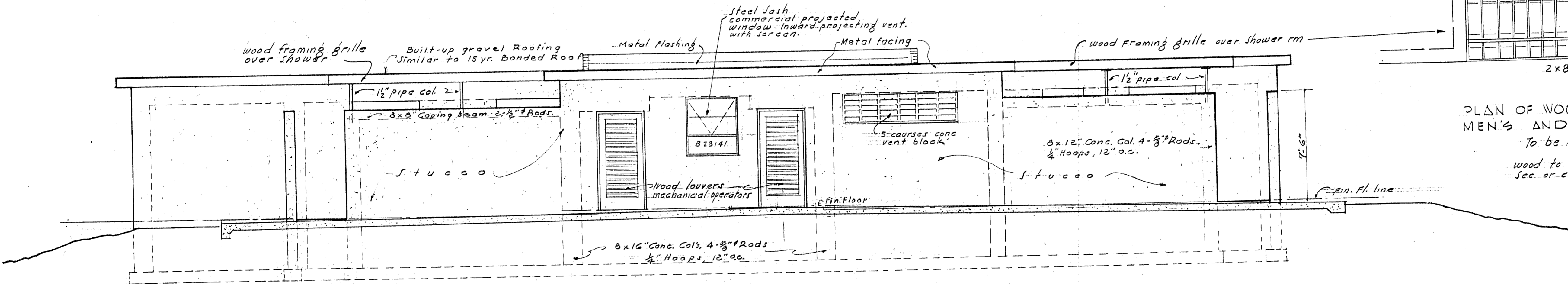
ARCHITECT: M.M. VAVILOFF
ENGINEER: ARTHUR E. DARLOW



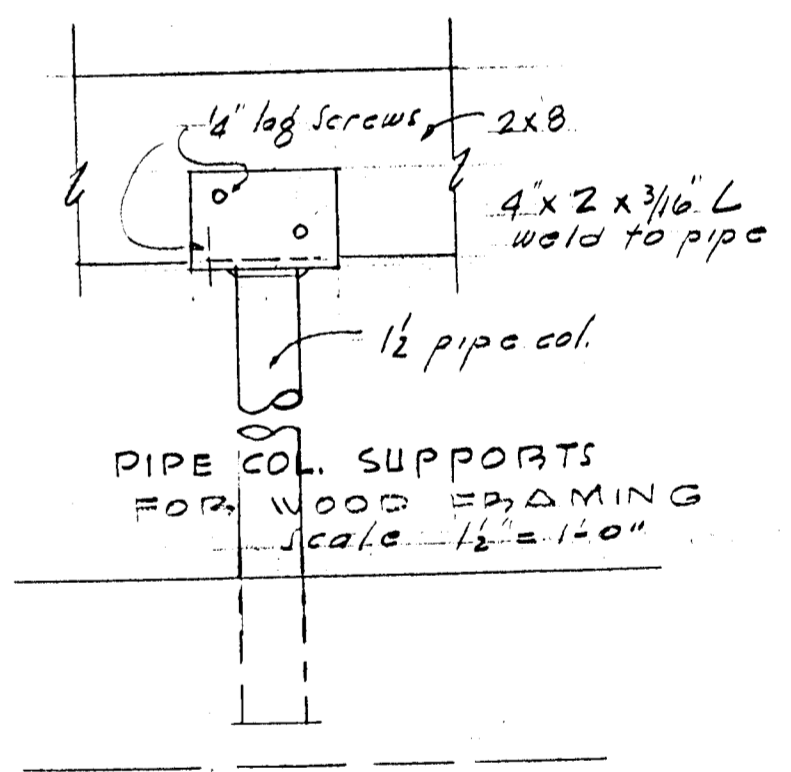
FRONT ELEVATION
Scale 1/4" = 1'-0"



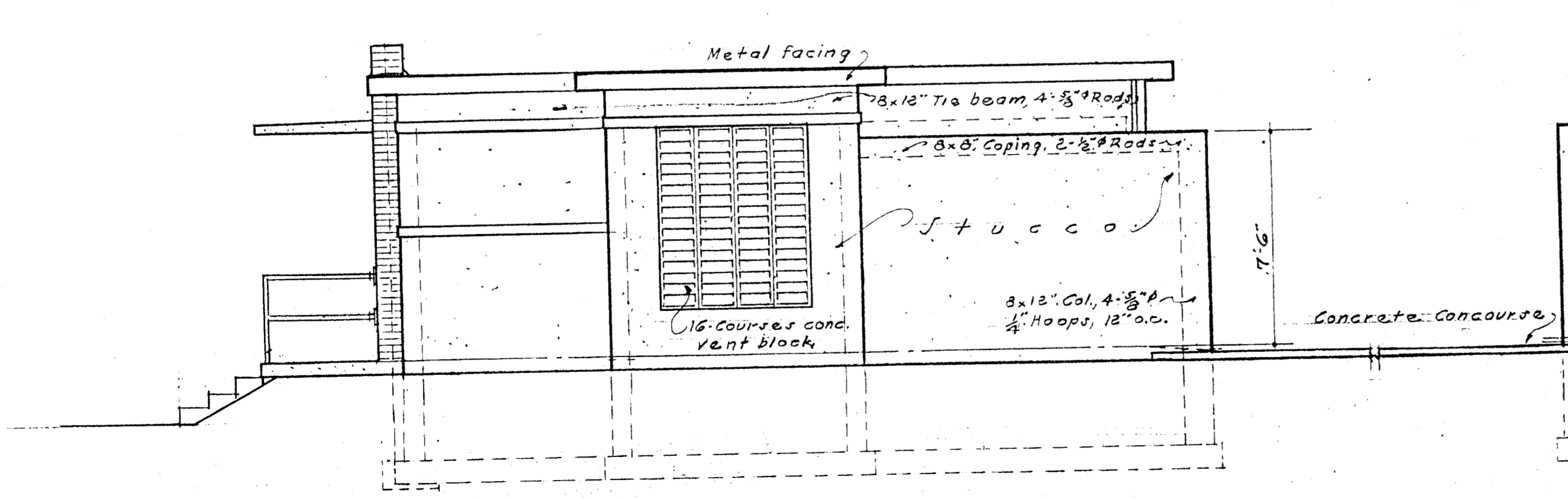
PLAN OF WOOD FRAMING OVER MEN'S AND WOMEN'S SHOWER ROOMS. Scale 1/4" = 1'-0"
To be installed at Dixie Park Only
Wood to be Ponderosa pine or cypress, treated with Sec. or Calceura.



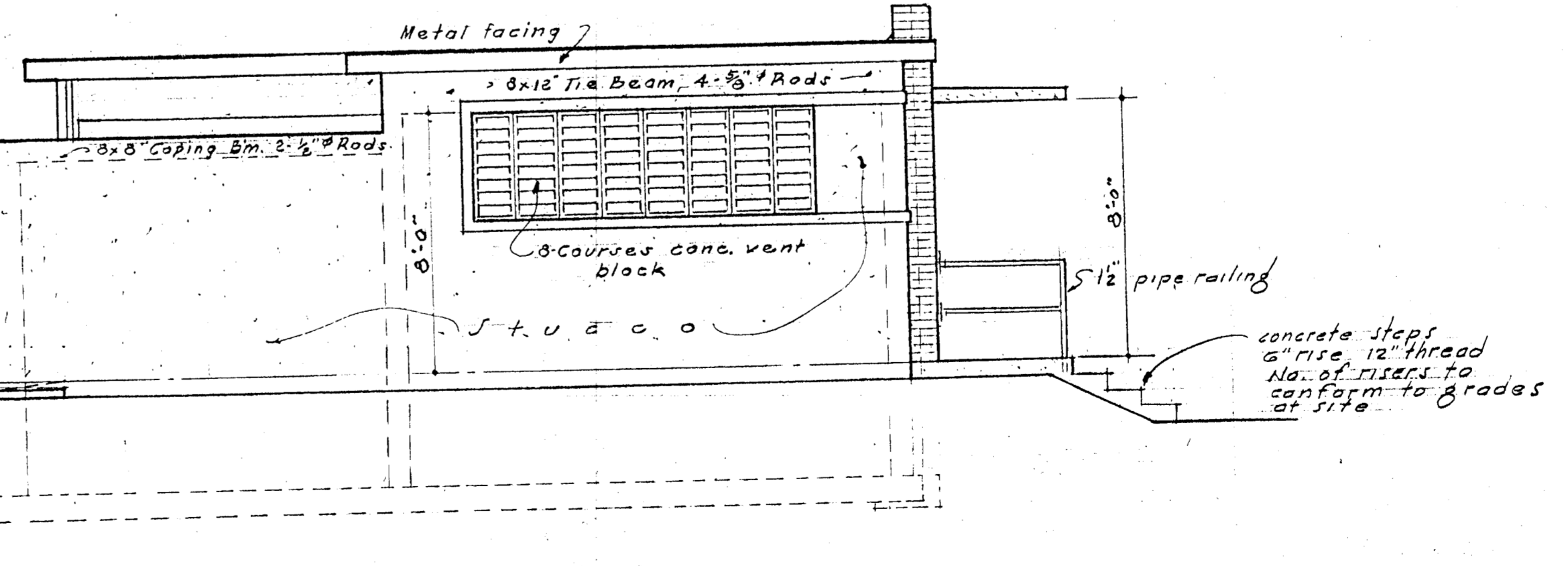
POOL SIDE ELEVATION
Scale 1/4" = 1'-0"



PIPE COL. SUPPORTS FOR WOOD FRAMING
Scale 1/2" = 1'-0"



RIGHT SIDE ELEVATION
Scale 1/4" = 1'-0"



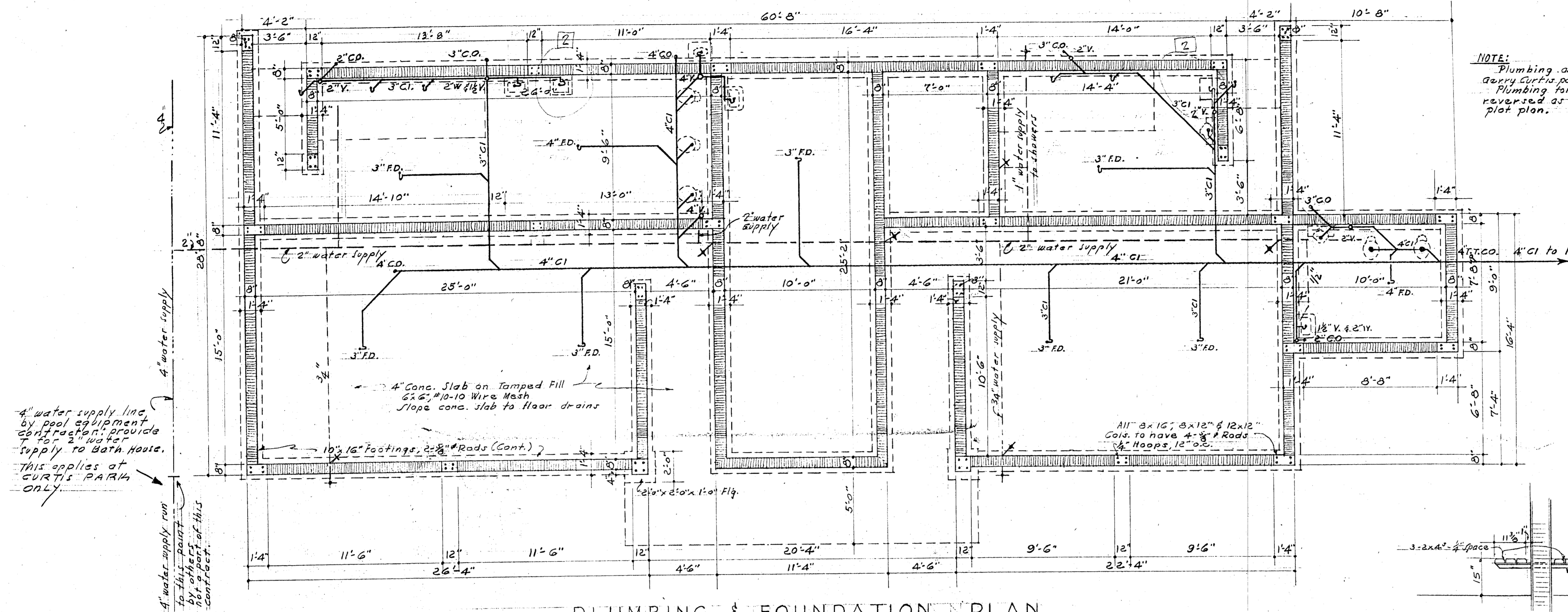
LEFT SIDE ELEVATION
Scale 1/4" = 1'-0"

ARCHITECT: M.M. VAVILOFF
ENGINEER: ARTHUR E. DARLOW

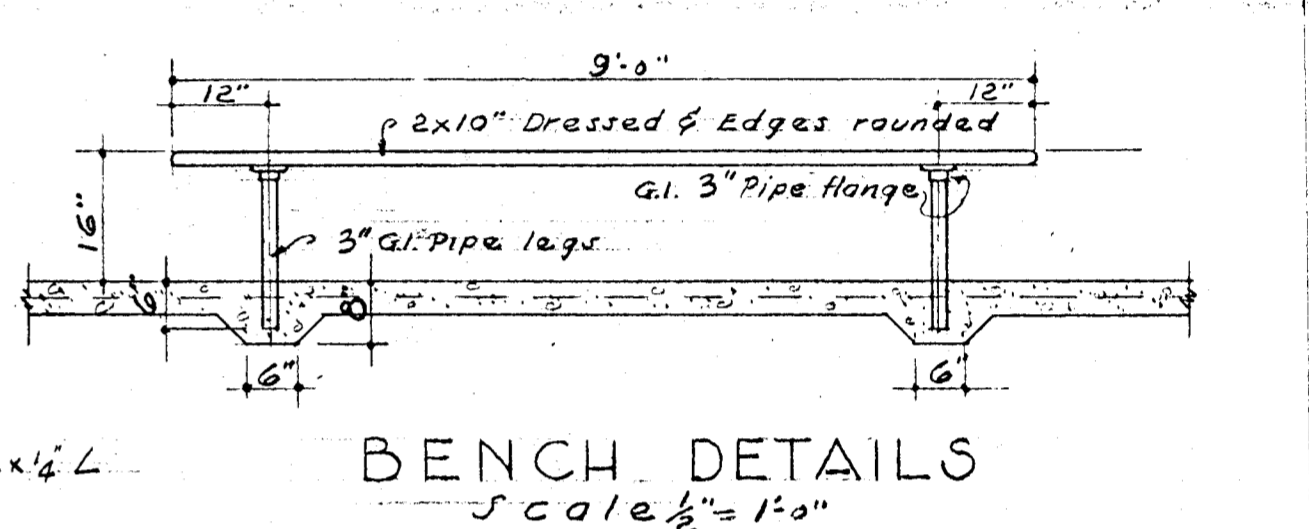
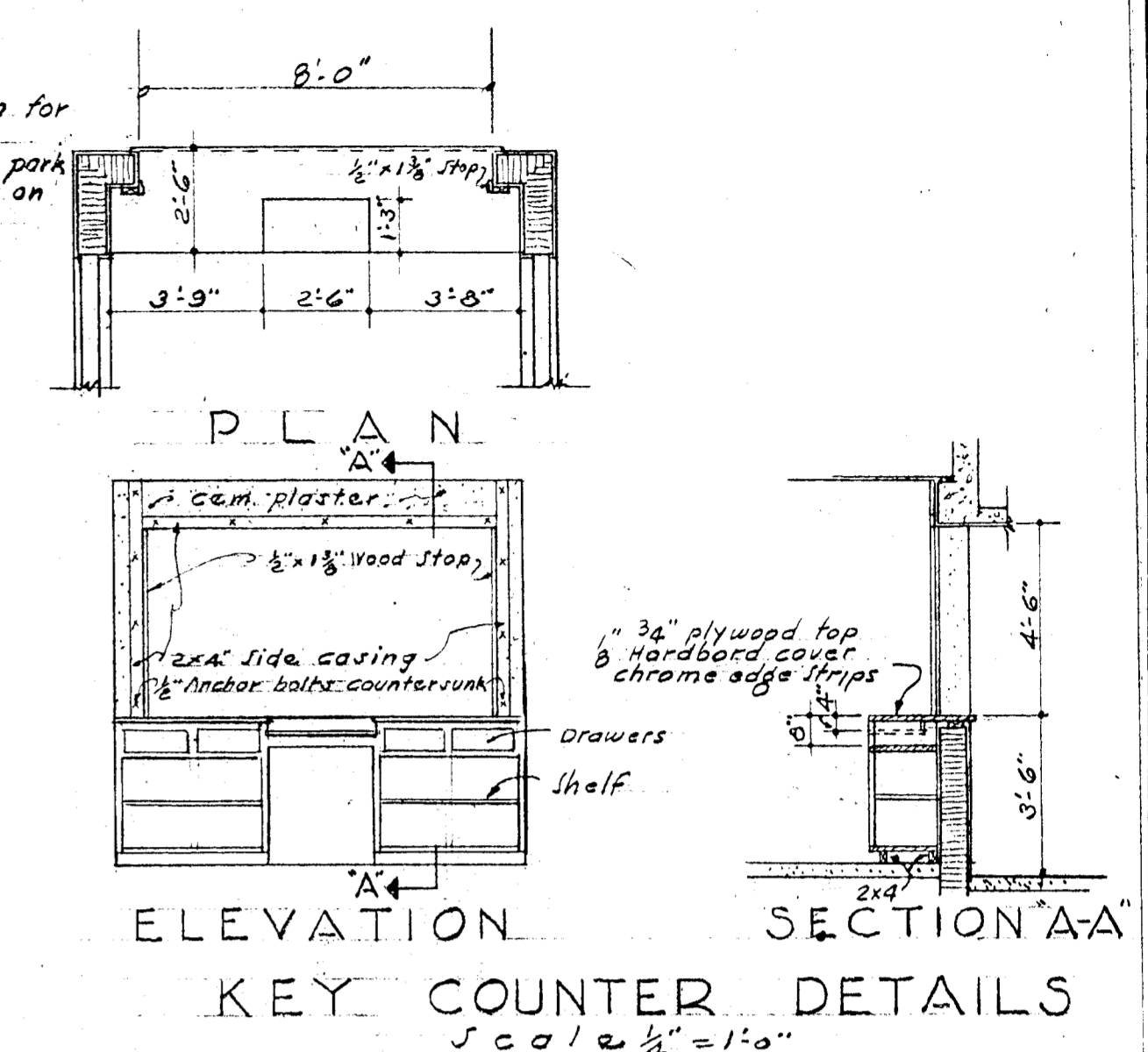
1/2/49	2 1/2" pipe col. eliminated 3/8" beam rods changed to 3/4"
	REVISIONS

BATH HOUSE ELEVATIONS		
MUNICIPAL SWIMMING POOL		
DR: B.F.H. TR. OK. 2 SCALE: As Shown DATE: July 49	PREPARED BY DEPARTMENT OF ENGINEERING DIVISION OF ENGINEERING CITY OF MIAMI, FLORIDA	SHEET NO 13 OF 15 SHEETS BEC 179

KAM

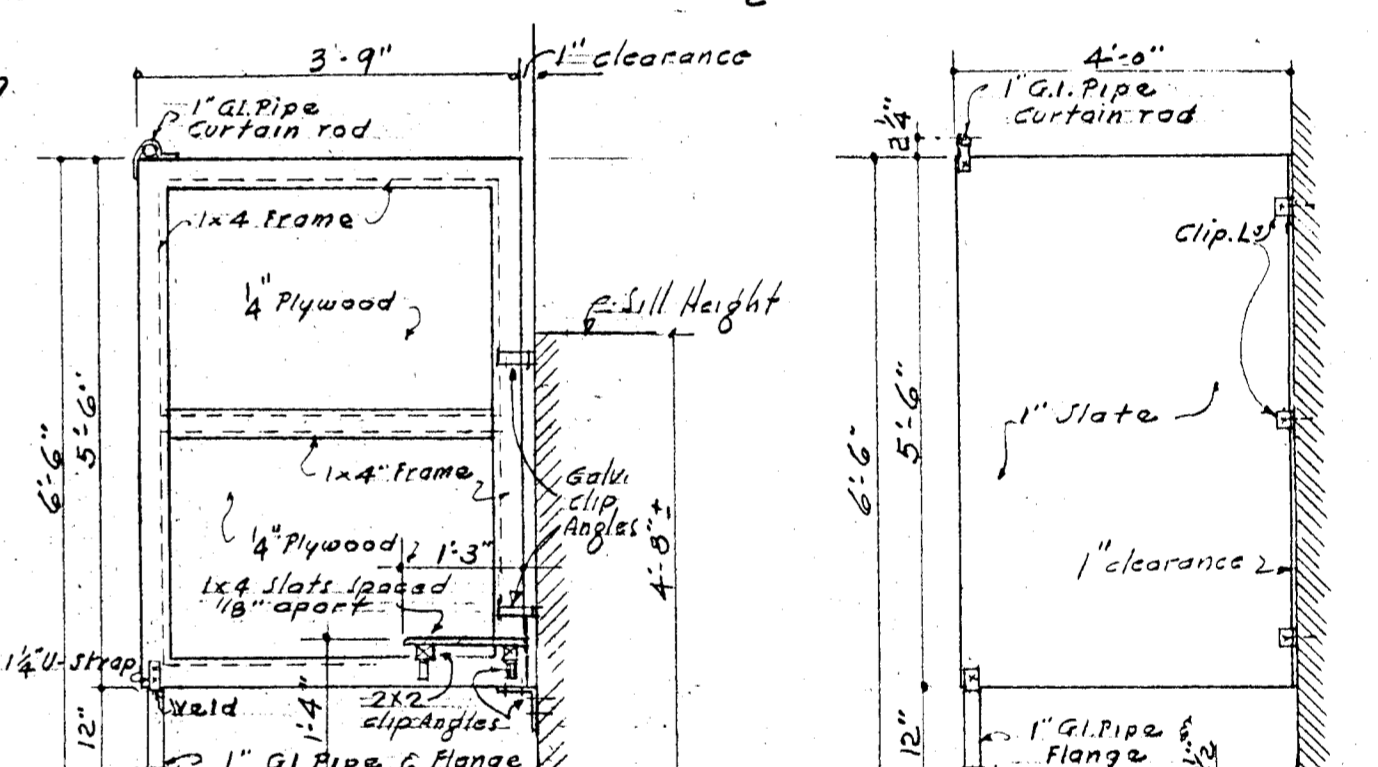


NOTE:
Plumbing as shown for
Curtis Park.
Plumbing for Dixie Park
reversed as shown on
plot plan.



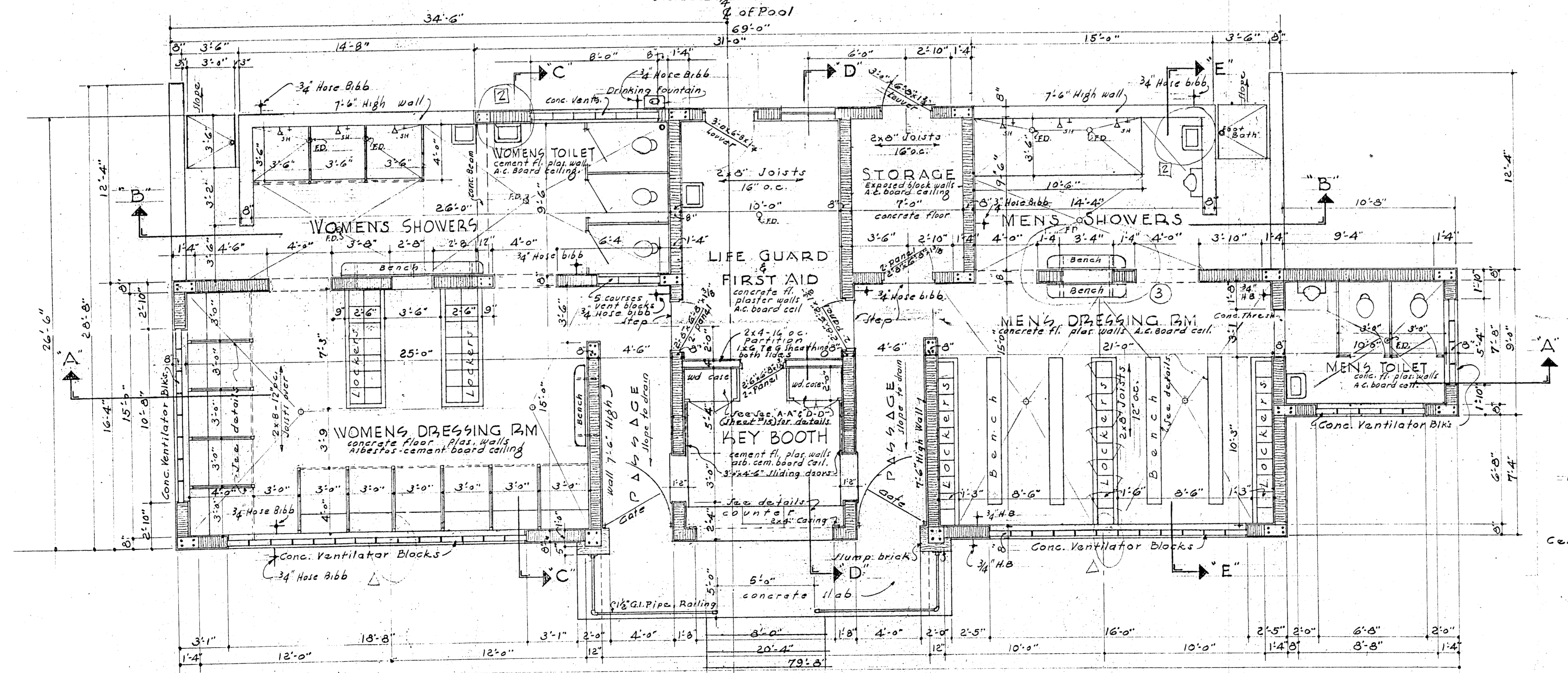
PLUMBING & FOUNDATION PLAN
Scale 1/4\"/>

WALL BENCHES

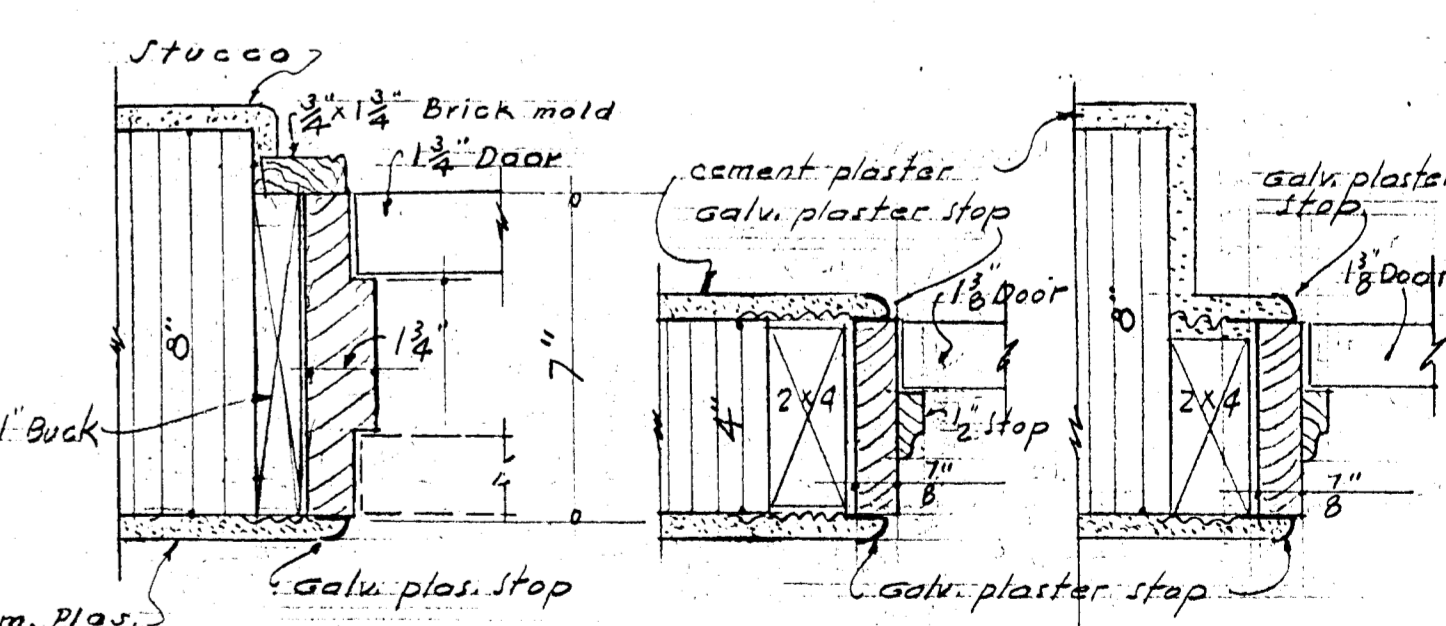


WOMENS LOCKER R.M.
STALL DETAILS
Scale 1/2\"/>

SHOWER STALL
PART DETAILS
Scale 1/2\"/>



FLOOR PLAN
Scale 1/4\"/>



EXTERIOR JAMB DOOR
INTERIOR JAMB DOOR
JAMB DETAILS
Scale 3\"/>

BATU LOU4E FLOOR & FOUNDATION PLAN

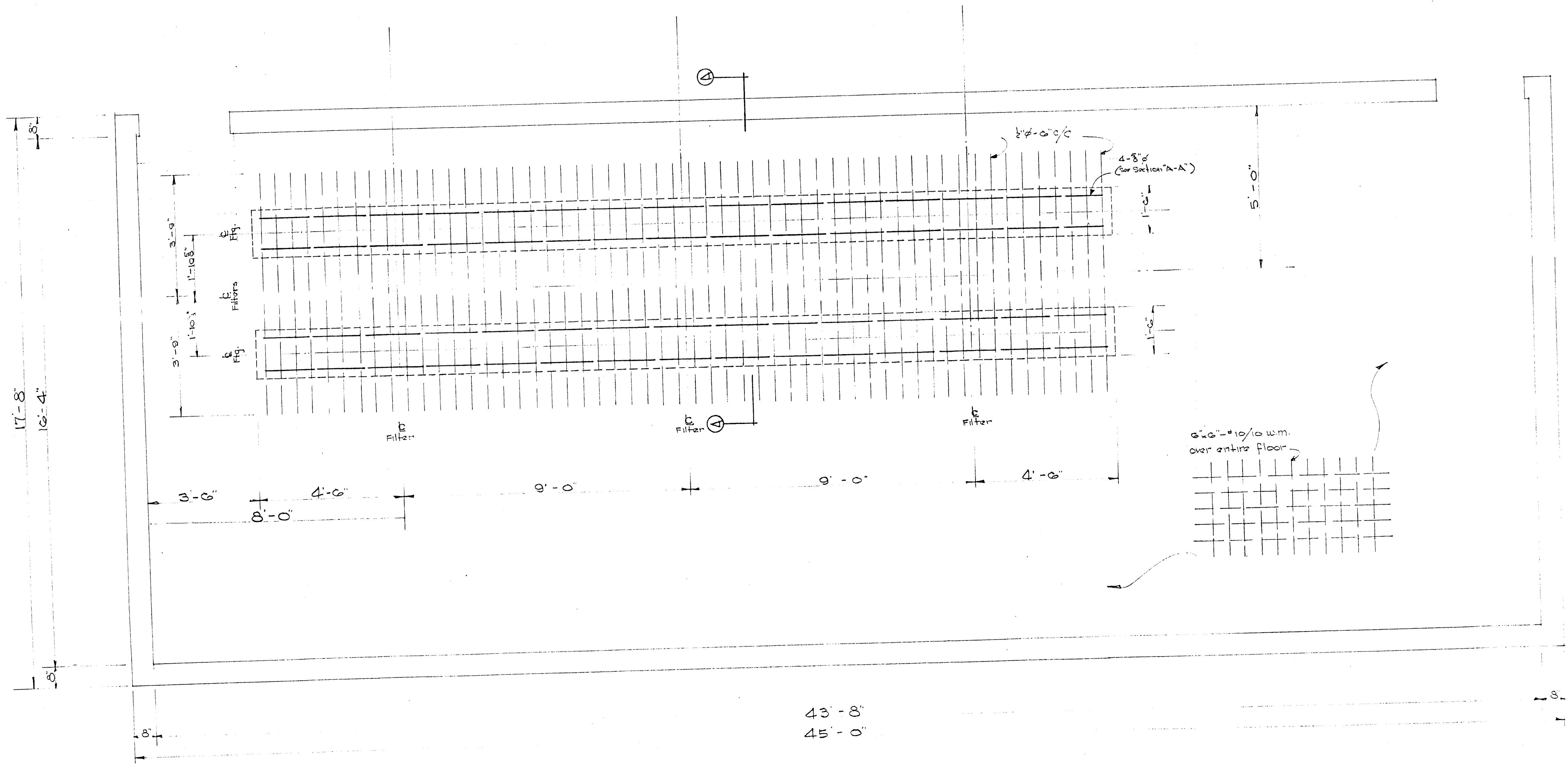
MUNICIPAL SWIMMING POOL

- 10/12/49 ③ Dimension of window in Mens Dress. Rm. changed
- 10/12/49 ④ Lavatory in Mens Shower & Lav. in Womens Toilet Added
- 10/12/49 Δ 2\"/>

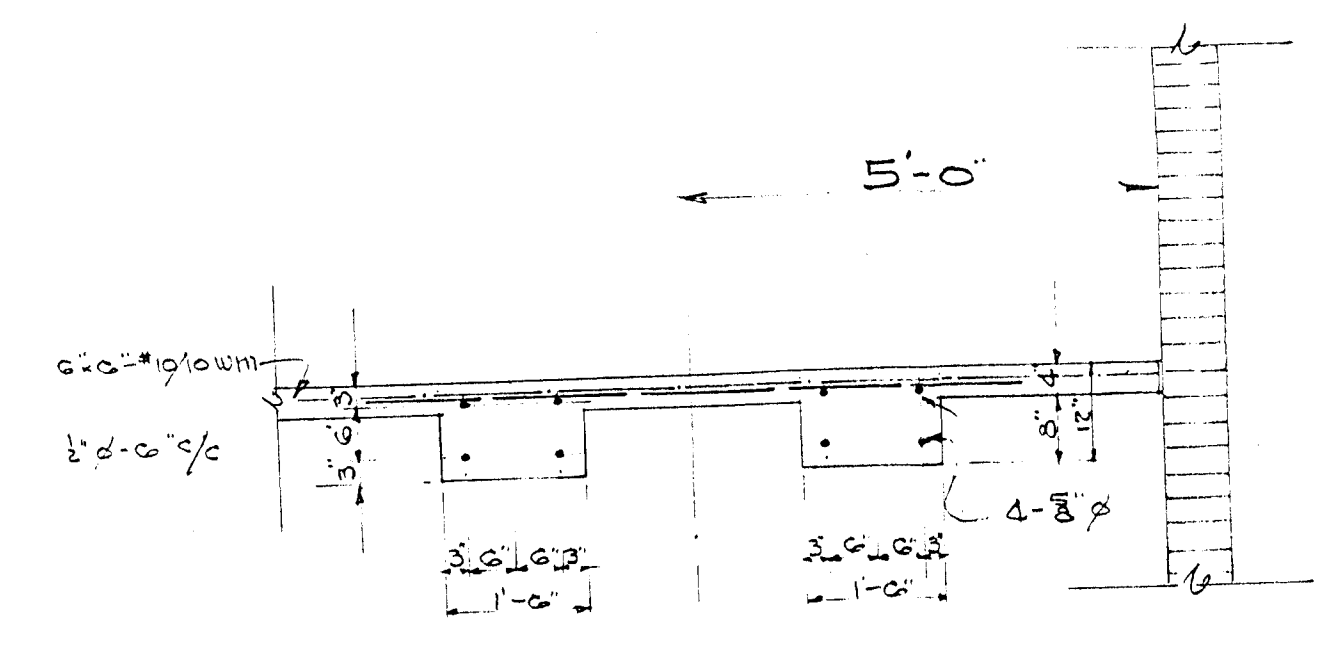
DR. B. F. H. TR. C. P. DATE - July 49
PREPARED BY DEPARTMENT OF ENGINEERING DIVISION OF ENGINEERING CITY OF MIAMI, FLORIDA
SHEET NO. 14 OF 15 SHEETS REC 179

ARCHITECT: M. M. VAVILOFF
ENGINEER: ARTHUR E. DARLOW

Filter tank footings added to floor detail



P L A N
 SCALE 1/2" = 1'-0"



SECTION "A-A"
 SCALE 1/2" = 1'-0"

K.A.H

REVISIONS			
DATE	BY	MARK	DESCRIPTION
11-7-49	HJH		Filter tank footings added to floor detail

PUMP HOUSE FLOOR REINFORCEMENT DETAILS

MUNICIPAL SWIMMING POOL

DRAWN BY DR. HJH CK. HJH SCALE AS SHOWN DATE NOV. 49	PREPARED BY DEPARTMENT OF ENGINEERING CITY OF MIAMI, FLORIDA	SHEET No. 1 OF 1 SHEETS REC 170
--	--	--