

STATION SCHEDULE					
STATION	GPM	STATION PIPE SIZE	VALVE SIZE	MAIN PIPE SIZE	WATER SOURCE
1 (NORTH SIDE)	6.8	3/4 INCH	1 INCH	1 INCH	SERVICE
2 (WEST BLDG.)	6.5	3/4 INCH	1 INCH	1 INCH	SERVICE
3 (BUFFER STRIP)	15.0	3/4 - 1-1/4 INCH	1 INCH	1-1/4 INCH	SERVICE
4 (SOD)	25.3	3/4 - 1-1/4 INCH	1 INCH	1-1/4 INCH	SERVICE
5 (DRIP)	3.8	DRIP LINE & 3/4 INCH	1 INCH (DRIP)	1 INCH	SERVICE

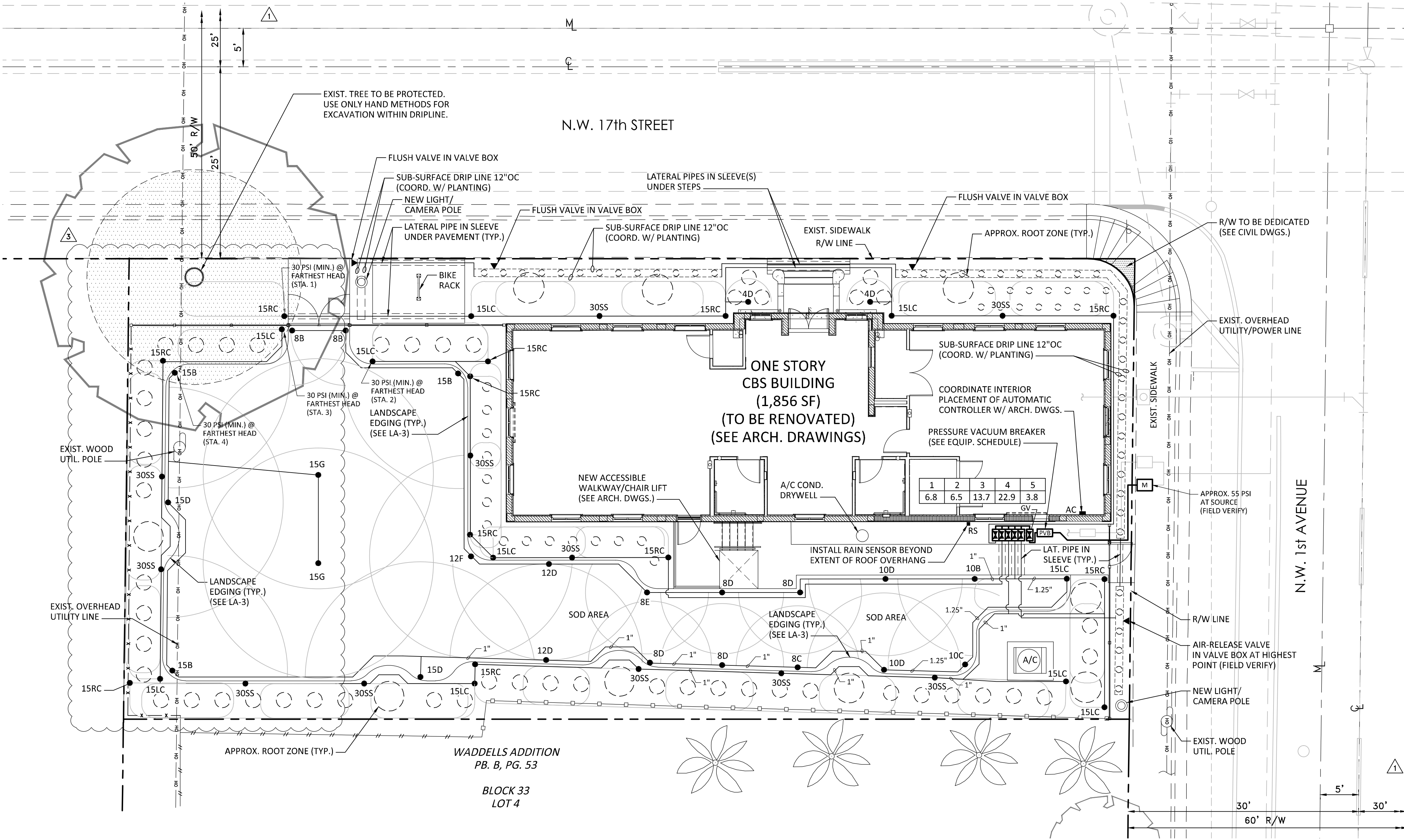
EQUIPMENT SCHEDULE				
KEY	EQUIPMENT	MANUFACTURER	MODEL	SIZE
AC	AUTOMATIC CONTROLLER	RAIN BIRD	ESPLXMSM8	8 STATION BASE
RS	RAIN SENSOR	HUNTER	MINI-CLIC-C	
GV	GATE VALVE	NIBCO	T-113	1-1/4 INCH
	AUTOMATIC ELECTRIC VALVE	RAIN BIRD	100-PEB-PRS-D	1 INCH
		HUNTER (DRIP)	PCZ-101-40 (DRIP)	1 INCH
ARV	AIR RELEASE VALVE (DRIP)	HUNTER	PLD-AVR	
FV	FLUSH VALVE (DRIP)	HUNTER	PLD-BV	
	STATION VALVE BOX & COVER	MACLEAN HIGHLINE	170106 W/SNAP LOCK	12 INCH STANDARD
		MACLEAN HIGHLINE	181122 W/LOCKING SCREW	10 INCH ROUND
PVB	PRESSURE VACUUM BREAKER	FEBCO	765	1 INCH

LEGEND			
SYMBOL	DESCRIPTION	SYMBOL	DESCRIPTION
	APPROXIMATE ROOT ZONE SEE PLANTING PLAN.		GATE VALVE IN VALVE BOX REFER TO EQUIPMENT SCHEDULE.
	KEY, SPRINKLER AND WATER PATTERN REFER TO SPRINKLER SCHEDULE.		STATION NUMBER AND FLOW IN GPM REFER TO IRRIGATION SYSTEM DIAGRAM AND STATION SCHEDULE.
	IRRIGATION LATERAL PIPING		AUTOMATIC CONTROLLER REFER TO EQUIPMENT SCHEDULE.
	IRRIGATION MAIN PIPING		RAIN SENSOR SWITCH REFER TO EQUIPMENT SCHEDULE.
	IRRIGATION LATERAL PIPING IN SLEEVE		BACKFLOW PREVENTION DEVICE REFER TO EQUIPMENT SCHEDULE.
	IRRIGATION MAIN PIPING IN SLEEVE		IRRIGATION METER REFER TO CIVIL DRAWINGS.
	AUTOMATIC ELECTRIC VALVE(S) IN VALVE BOX REFER TO STATION AND EQUIPMENT SCHEDULES.		

PIPING SCHEDULE				
PIPING	MATERIAL	PIPE	FITTINGS	JOINT
IRRIGATION MAIN	POLYVINYL CHLORIDE (PVC) PLASTIC PIPE & FITTINGS	ASTM D 1785 SCHEDULE 40	ASTM D 2466 SCH 40, SOCKET	ASTM D 2564 SOLVENT CEMENT
IRRIGATION STATION	POLYVINYL CHLORIDE (PVC) PLASTIC PIPE & FITTINGS	ASTM D 1785 SCHEDULE 40	ASTM D 2466 SCH 40, SOCKET	ASTM D 2564 SOLVENT CEMENT
IRRIGATION SLEEVE	POLYVINYL CHLORIDE (PVC) PLASTIC PIPE & FITTINGS	ASTM D 1785 SCHEDULE 40	ASTM D 2466 SCH 40, SOCKET	ASTM D 2564 SOLVENT CEMENT
SPRINKLER HEAD FLEXIBLE JOINT	POLYETHYLENE PLASTIC TUBING & FITTINGS	ASTM D 2737	THREAD / BARB	SCREWED / INSERTED
IRRIGATION DRIP LINE*	POLYETHYLENE PLASTIC TUBING & FITTINGS	ASAE S435	THREAD / BARB	SCREWED / INSERTED

* NOTE: SUB-SURFACE DRIP LINE SHALL BE HUNTER ECO-WRAP PLD-ESD-17 WITH HUNTER PLD FITTINGS (OR APPROVED EQUAL).

SPRINKLER SCHEDULE									
KEY	EQPT	MANUFACTURER	BODY	NOZZLE	BASE	PSI	GPM	PATTERN	RANGE
BB	HEAD	HUNTER	PROS-04-PRS30	PCN-25	1/2" NPT	30	0.25	BUBBLER	BUBBLER
2Q	HEAD	HUNTER	PROS-04-PRS30	2Q	1/2" NPT	30	0.11	90°	2'
2H	HEAD	HUNTER	PROS-04-PRS30	2H	1/2" NPT	30	0.16	180°	2'
4A	HEAD	HUNTER	PROS-04-PRS30	4A	1/2" NPT	30	0.13	45°	3'-4"
4B	HEAD	HUNTER	PROS-04-PRS30	4A	1/2" NPT	30	0.28	90°	3'-4"
4C	HEAD	HUNTER	PROS-04-PRS30	4A	1/2" NPT	30	0.34	120°	3'-4"
4D	HEAD	HUNTER	PROS-04-PRS30	4A	1/2" NPT	30	0.45	180°	3'-4"
4E	HEAD	HUNTER	PROS-04-PRS30	4A	1/2" NPT	30	0.68	240°	3'-4"
4F	HEAD	HUNTER	PROS-04-PRS30	4A	1/2" NPT	30	0.73	270°	3'-4"
4G	HEAD	HUNTER	PROS-04-PRS30	4A	1/2" NPT	30	0.80	360°	3'-4"
5CST	HEAD	HUNTER	PROS-04-PRS30	5CST-B	1/2" NPT	30	0.38	STREAM	5'
6A	HEAD	HUNTER	PROS-04-PRS30	6A	1/2" NPT	30	0.18	45°	4.5'-6'
6B	HEAD	HUNTER	PROS-04-PRS30	6A	1/2" NPT	30	0.37	90°	4.5'-6'
6C	HEAD	HUNTER	PROS-04-PRS30	6A	1/2" NPT	30	0.44	120°	4.5'-6'
6D	HEAD	HUNTER	PROS-04-PRS30	6A	1/2" NPT	30	0.60	180°	4.5'-6'
6E	HEAD	HUNTER	PROS-04-PRS30	6A	1/2" NPT	30	0.88	240°	4.5'-6'
6F	HEAD	HUNTER	PROS-04-PRS30	6A	1/2" NPT	30	1.10	270°	4.5'-6'
6G	HEAD	HUNTER	PROS-04-PRS30	6A	1/2" NPT	30	1.26	360°	4.5'-6'
8A	HEAD	HUNTER	PROS-04-PRS30	8A	1/2" NPT	30	0.15	45°	6'-8"
8B	HEAD	HUNTER	PROS-04-PRS30	8A	1/2" NPT	30	0.29	90°	6'-8"
8C	HEAD	HUNTER	PROS-04-PRS30	8A	1/2" NPT	30	0.39	120°	6'-8"
8D	HEAD	HUNTER	PROS-04-PRS30	8A	1/2" NPT	30	0.58	180°	6'-8"
8E	HEAD	HUNTER	PROS-04-PRS30	8A	1/2" NPT	30	0.78	240°	6'-8"
8F	HEAD	HUNTER	PROS-04-PRS30	8A	1/2" NPT	30	0.87	270°	6'-8"
8G	HEAD	HUNTER	PROS-04-PRS30	8A	1/2" NPT	30	1.16	360°	6'-8"
10A	HEAD	HUNTER	PROS-04-PRS30	10A	1/2" NPT	30	0.25	45°	7.5'-10'
10B	HEAD	HUNTER	PROS-04-PRS30	10A	1/2" NPT	30	0.49	90°	7.5'-10'
10C	HEAD	HUNTER	PROS-04-PRS30	10A	1/2" NPT	30	0.65	120°	7.5'-10'
10D	HEAD	HUNTER	PROS-04-PRS30	10A	1/2" NPT	30	0.98	180°	7.5'-10'
10E	HEAD	HUNTER	PROS-04-PRS30	10A	1/2" NPT	30	1.31	240°	7.5'-10'
10F	HEAD	HUNTER	PROS-04-PRS30	10A	1/2" NPT	30	1.47	270°	7.5'-10'
10G	HEAD	HUNTER	PROS-04-PRS30	10A	1/2" NPT	30	1.96	360°	7.5'-10'
12A	HEAD	HUNTER	PROS-04-PRS30	12A	1/2" NPT	30	0.32	45°	9'-12'
12B	HEAD	HUNTER	PROS-04-PRS30	12A	1/2" NPT	30	0.63	90°	9'-12'
12C	HEAD	HUNTER	PROS-04-PRS30	12A	1/2" NPT	30	0.84	120°	9'-12'
12D	HEAD	HUNTER	PROS-04-PRS30	12A	1/2" NPT	30	1.26	180°	9'-12'
12E	HEAD	HUNTER	PROS-04-PRS30	12A	1/2" NPT	30	1.68	240°	9'-12'
12F	HEAD	HUNTER	PROS-04-PRS30	12A	1/2" NPT	30	1.89	270°	9'-12'
12G	HEAD	HUNTER	PROS-04-PRS30	12A	1/2" NPT	30	2.52	360°	9'-12'
15A	HEAD	HUNTER	PROS-04-PRS30	15A	1/2" NPT	30	0.47	45°	11.3'-15'
15B	HEAD	HUNTER	PROS-04-PRS30	15A	1/2" NPT	30	0.93	90°	11.3'-15'
15C	HEAD	HUNTER	PROS-04-PRS30	15A	1/2" NPT	30	1.24	120°	11.3'-15'
15D	HEAD	HUNTER	PROS-04-PRS30	15A	1/2" NPT	30	1.86	180°	11.3'-15'
15E	HEAD	HUNTER	PROS-04-PRS30	15A	1/2" NPT	30	2.48	240°	11.3'-15'
15F	HEAD	HUNTER	PROS-04-PRS30	15A	1/2" NPT	30	2.79	270°	11.3'-15'
15G	HEAD	HUNTER	PROS-04-PRS30	15A	1/2" NPT	30	3.72	360°	11.3'-15'
17A	HEAD	HUNTER	PROS-04-PRS30	17A	1/2" NPT	30	0.60	45°	12.8'-17'
17B	HEAD	HUNTER	PROS-04-PRS30	17A	1/2" NPT	30	1.20	90°	12.8'-17'
17C	HEAD	HUNTER	PROS-04-PRS30	17A	1/2" NPT	30	1.60	120°	12.8'-17'
17D	HEAD	HUNTER	PROS-04-PRS30	17A	1/2" NPT	30	2.40	180°	12.8'-17'
17E	HEAD	HUNTER	PROS-04-PRS30	17A	1/2" NPT	30	3.20	240°	12.8'-17'
17F	HEAD	HUNTER	PROS-04-PRS30	17A	1/2" NPT	30	3.60	270°	12.8'-17'
17G	HEAD	HUNTER	PROS-04-PRS30	17A	1/2" NPT	30	4.80	360°	12.8'-17'
15E5	HEAD	HUNTER	PROS-04-PRS30	ES-515	1/2" NPT	30	0.65	RECTANGLE	5' x 15'
15LC	HEAD	HUNTER	PROS-04-PRS30	ES-515	1/2" NPT	30	0.65	RECTANGLE	5' x 15'
15RC	HEAD	HUNTER	PROS-04-PRS30	RS-515	1/2" NPT	30	0.65	RECTANGLE	5' x 15'
18S5	HEAD	HUNTER	PROS-04-PRS30	SS-918	1/2" NPT	30	1.72	RECTANGLE	9' x 18'
30CS	HEAD	HUNTER	PROS-04-PRS30	CS-530	1/2" NPT	30	1.30	RECTANGLE	5' x 30'
30SS	HEAD	HUNTER	PROS-04-PRS30	SS-530	1/2" NPT	30	1.30	RECTANGLE	5' x 30'



- IRRIGATION NOTES**
- ALL IRRIGATION EQUIPMENT SHALL BE INSTALLED IN COMPLIANCE WITH LOCAL, COUNTY, AND STATE CODES AND REQUIREMENTS.
 - IRRIGATION PLANS ARE DIAGRAMMATIC ONLY. ALL MAIN LINES, LATERAL LINES, AND WIRING SHALL BE INSTALLED IN THE SAME TRENCH AND INSIDE PLANTING AREAS WHENEVER POSSIBLE. ALL IRRIGATION EQUIPMENT INSTALLATIONS MUST BE COORDINATED IN FIELD WITH PLANTING, ELECTRICAL, AND CIVIL WORK. CONTRACTOR SHALL IMMEDIATELY NOTIFY ARCHITECT OF CONFLICTS WITH PROPOSED IRRIGATION EQUIPMENT LOCATIONS.
 - THE CONTRACTOR SHALL BE DEEMED TO HAVE VISITED THE SITE PRIOR TO BIDDING AND SHALL VERIFY ALL EXISTING CONDITIONS IN THE FIELD. DISCREPANCIES FOUND WHICH MAY ALTER THE WORK SHALL BE BROUGHT TO THE ATTENTION OF THE ARCHITECT IN WRITING FOR APPROVAL OR MODIFICATION. ALL EXISTING CONDITIONS INCLUDING BUT NOT LIMITED TO SUBSURFACE CONDITIONS, EXTENT OF TRASH, DEBRIS AND CONTAMINATION, LOCATION OF UNDERGROUND AND ABOVEGROUND UTILITIES, VEGETATION, AND PAVEMENTS SHOWN ON THE DRAWINGS MUST BE FIELD VERIFIED BY THE CONTRACTOR BEFORE SUBMITTAL OF BID.
 - PIPING WITH NO SIZE INDICATION IS 3/4-INCH MINIMUM SIZE. PIPE SIZES FOR SIMILAR SIZED PIPE SEGMENTS MAY BE SHOWN ONLY AT BEGINNING AND END OF SEGMENT FOR CLARITY. MINIMUM AVAILABLE DESIGN PRESSURE (PSI) IS SHOWN AT FARTHEST HEAD FOR EACH STATION.
 - LOCATE PART-CIRCLE SPRINKLER HEADS TO MAINTAIN A MINIMUM OF 6-INCHES FROM CURBING AND PAVEMENT, AND 12-INCHES FROM STRUCTURES. ADJUST SPRINKLER HEADS AS NEEDED TO ENSURE NO OVERSPRAY ONTO WALKWAYS, STRUCTURES, CURBING, OR PAVEMENT.
 - USE PIPE SLEEVES AT LEAST TWO PIPE SIZES LARGER THAN THE CARRIER PIPE OR TWICE THE DIAMETER OF THE WIRE BUNDLE TO BE PLACED UNDER ALL PAVING/STEPS.
 - CONNECT NEW STATION VALVES TO PROPOSED AUTOMATIC CONTROLLER. MULTIPLE STATION VALVES MAY BE HOUSED WITHIN SINGLE VALVE BOX AS APPROVED BY ARCHITECT DURING SHOP DRAWING SUBMITTAL. REFER TO EQUIPMENT SCHEDULE.
 - MAINTAIN SPRINKLERS AND DRIP IRRIGATION EQUIPMENT IN SEPARATE STATIONS. DO NOT COMBINE SPRINKLERS AND DRIP IRRIGATION TO SAME AUTOMATIC VALVE. PROVIDE QUANTITY AND EXTENTS OF SPRINKLER/DRIP STATIONS AS INDICATED ON PLAN.
 - LOCATE SUB-SURFACE ECO-WRAP DRIP LINES AT 8"-12" (MAX.) DEPTH FOR SHRUB PLANTING AREAS. PROVIDE 12" - 18" HORIZONTAL SEPARATION BETWEEN LINES. COORDINATE WITH PLANTING LAYOUT.
 - PROVIDE (1) HUNTER ECO-INDICATOR PER PROPOSED SUB-SURFACE DRIP IRRIGATION ZONE.
 - REFER TO SECTION 32 84 00 PLANTING IRRIGATION, AND SHEET LA-4 FOR IRRIGATION DETAILS.

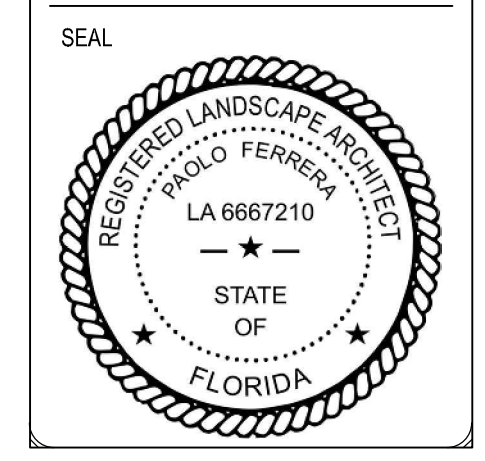


IRRIGATION PLAN
DORSEY MEMORIAL LIBRARY RESTORATION
 100 NW 17 STREET
 MIAMI, FL 33136

DATE: 11/15/16
 DESIGN:
 DRAWN:
 CHECKED:
 REVISIONS:
 No. Date
 1 PERMIT REV. 1 1/23/17
 2 REV. 3 3/7/17

JOB No. B-30531
 FILE:

LANDSCAPE ARCHITECT:
 Paolo Ferrara
 LA 6667210
 M.C. Harry & Associates



SCALE: AS SHOWN

SHEET No.
LA-2
 2 OF 5



PERMIT SET