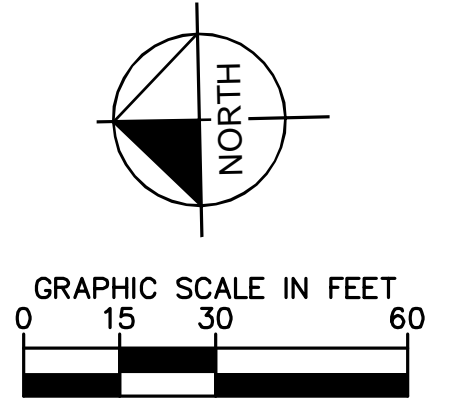
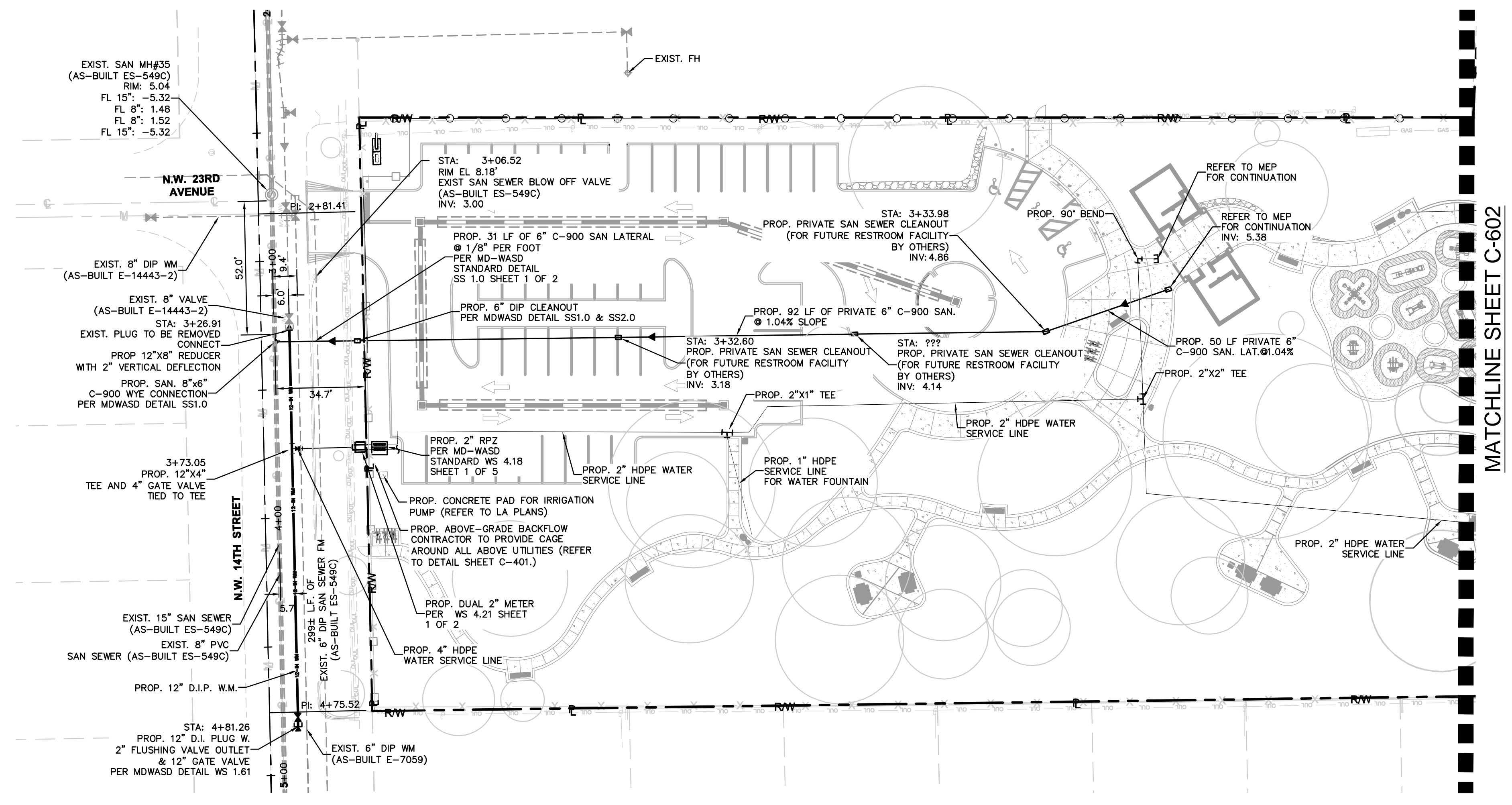


This document, together with the concepts and designs presented herein, as an instrument of service, is intended only for the specific purpose and client for which it was prepared. Reuse of and improper reliance on this document without written authorization and adaptation by Kimley-Horn and Associates, Inc. shall be without liability to Kimley-Horn and Associates, Inc.



LEGEND:

- EXIST. AND PROP. RIGHT-OF-WAY LINE OR PROPERTY LINE
- CENTER LINE OF ROADWAY
- MONUMENT LINE
- PROP. ASPHALT PAVEMENT (PROP. 28,165 SF)
- PROP. LANDSCAPING (SEE LANDSCAPE SET)
- PROP. SANITARY SEWER SERVICE LATERAL AND CLEANOUT
- PROP. WATER SERVICE LINE
- PROP. SANITARY SEWER LATERAL AND MANHOLE
- PROP. STORM DRAINAGE PIPE
- PROP. EXFILTRATION TRENCH
- EXIST. GAS LINE



MATCHLINE SHEET C-602



PBA FERN ISLE PARK REDEVELOPMENT
CITY OF MIAMI, PROJECT NO. B-40543
2304 N.W. 14TH STREET, MIAMI, FL 33125

WATER AND SEWER
PLAN

SHEET TITLE:

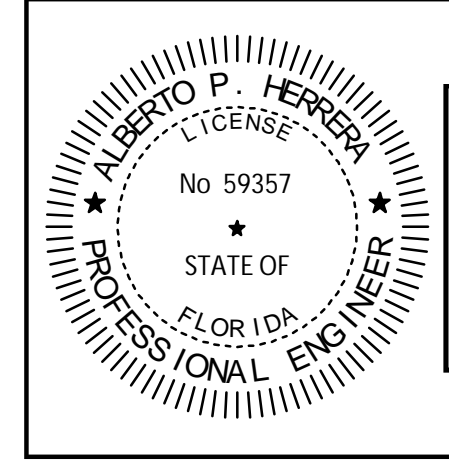
LICENSED PROFESSIONAL

DATE:

No.	REVISIONS - SUBMITTALS	DATE

AGREEMENT ID:
30341

6/18/2019



THIS ITEM HAS BEEN DIGITALLY SIGNED AND SEALED BY ALBERTO P. HERRERA, P.E., ON THE DATE ADJACENT TO THE SEAL.

PRINTED COPIES OF THIS DOCUMENT ARE NOT CONSIDERED SIGNED AND SEALED AND THE SIGNATURE MUST BE VERIFIED ON ANY ELECTRONIC COPIES.

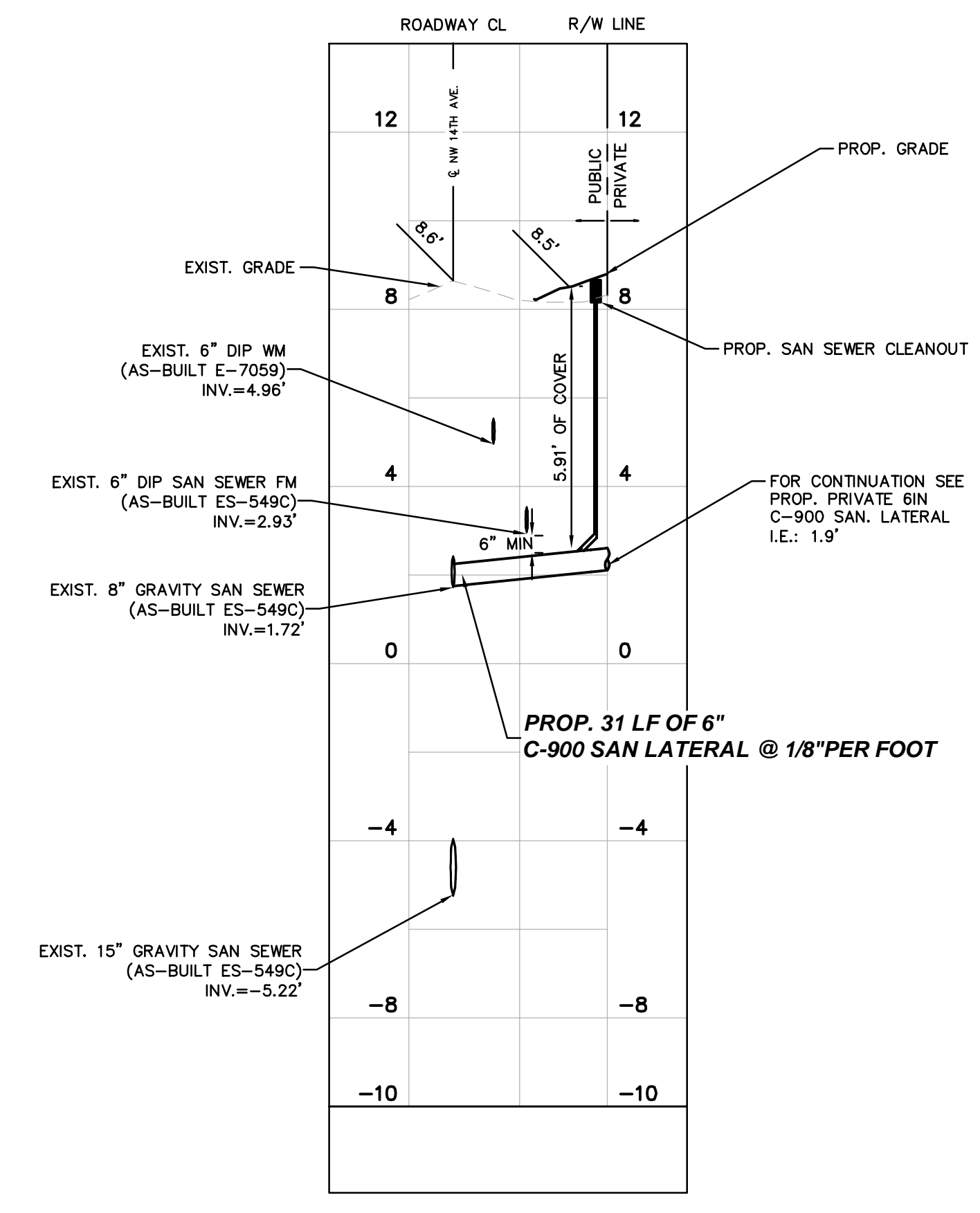
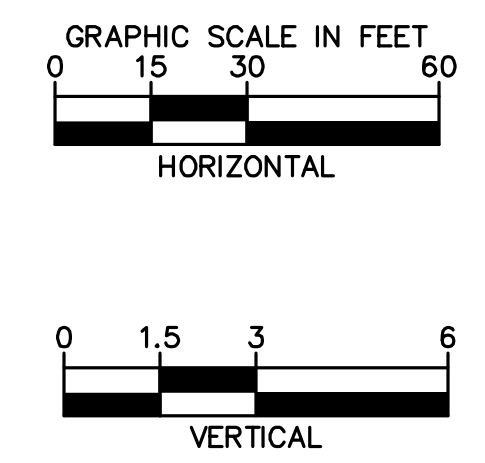


Call 811 or www.sunshine811.com two full business days before digging to have utilities located and marked.
Check positive response codes before you dig!

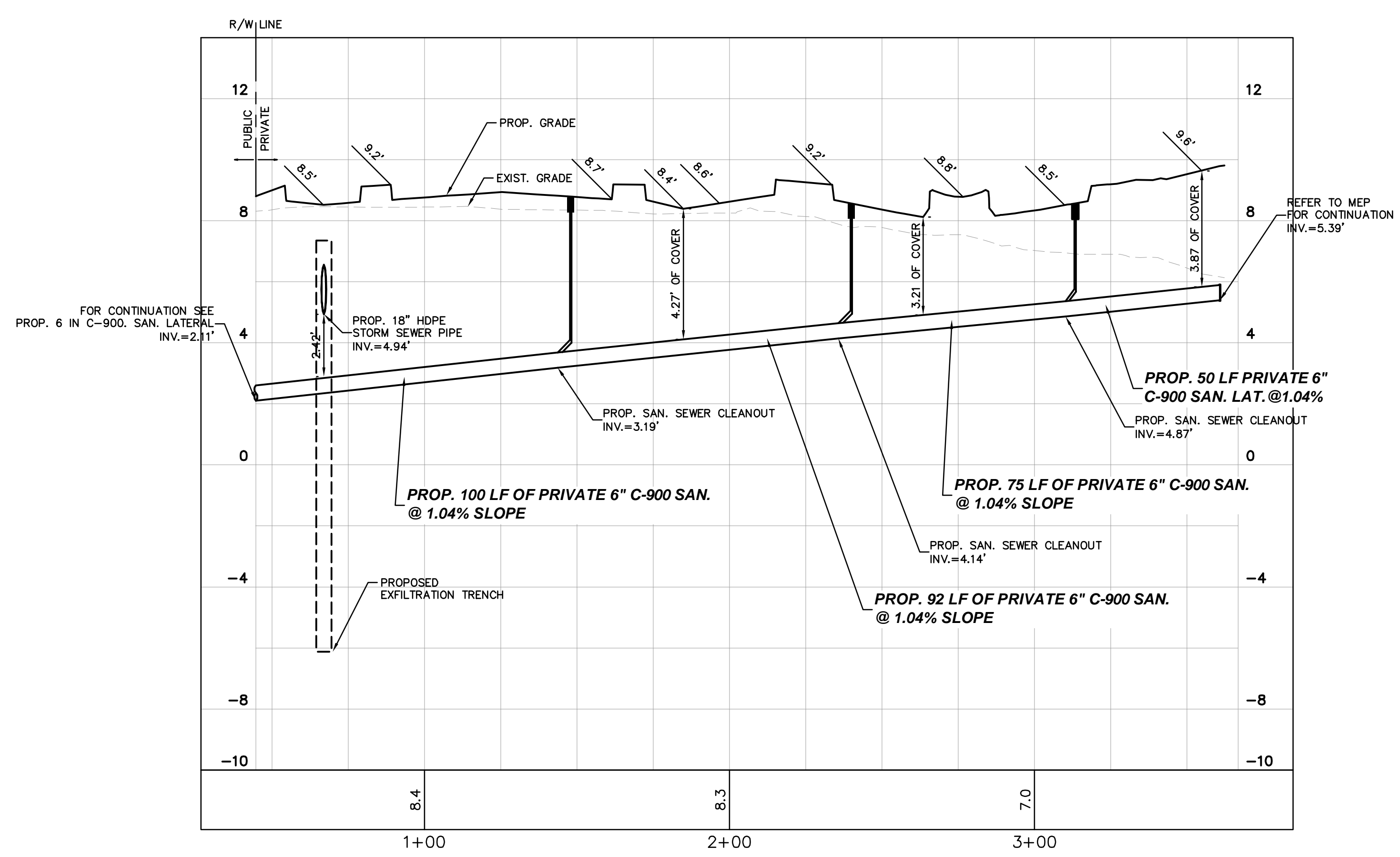
PAGE No. SHEET No.
C-601

This document, together with the concepts and designs presented herein, is intended only for the specific purpose and client for which it was prepared. Reuse of and improper reliance on this document without written authorization and adaptation by Kimley-Horn and Associates, Inc. shall be without liability to Kimley-Horn and Associates, Inc.

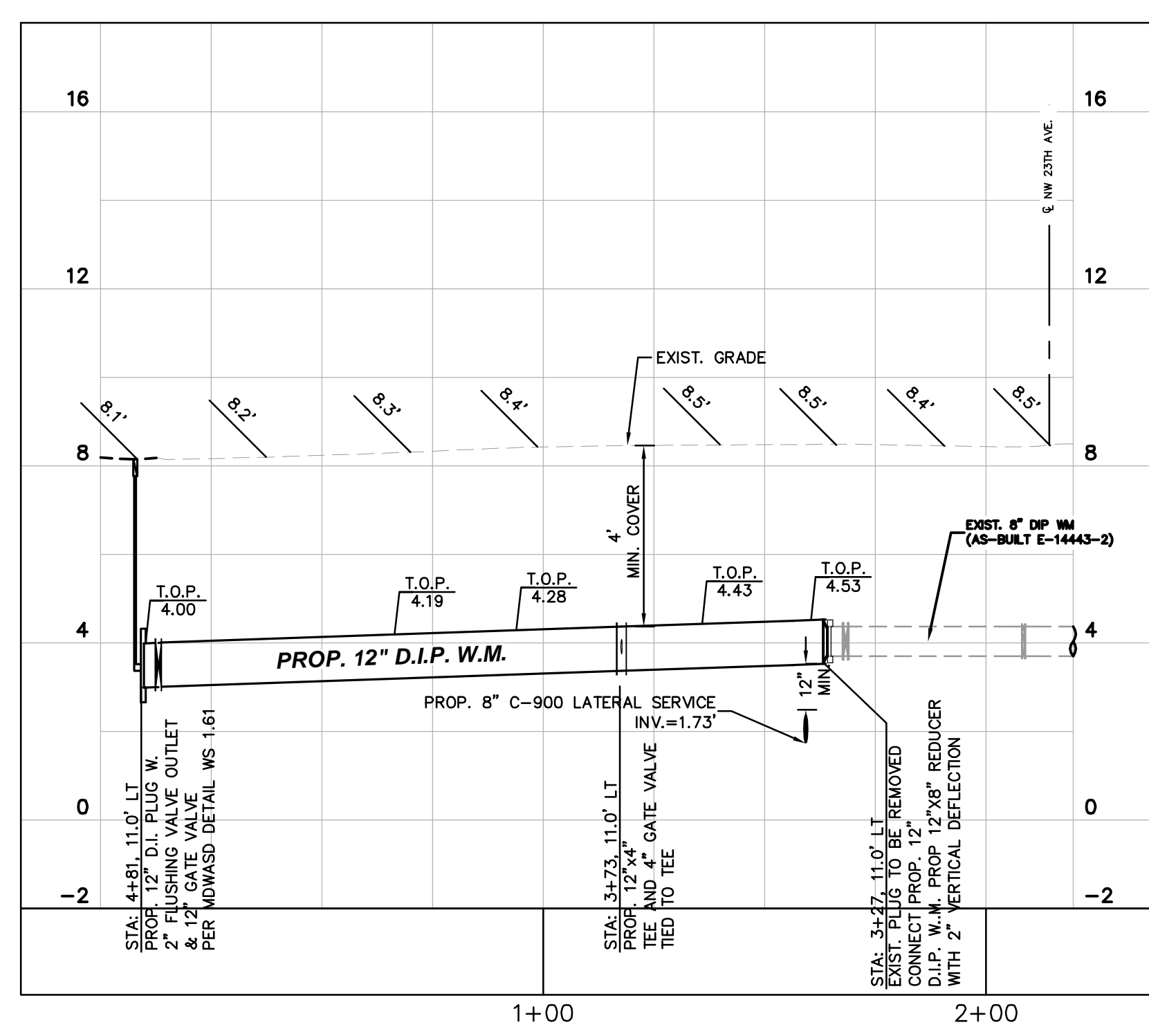
K:\CROG_LURC\04-36430051 pba fern isle\CIVIL\CAOD\plansheets\C-603 WATER AND SEWER PROFILES.dwg
 P:\PBA\BjR\Rubino, Todd Sheet Set-PBA Fern Isle Layout\C-603 WATER AND SEWER PROFILES June 19, 2019 03:22:59pm



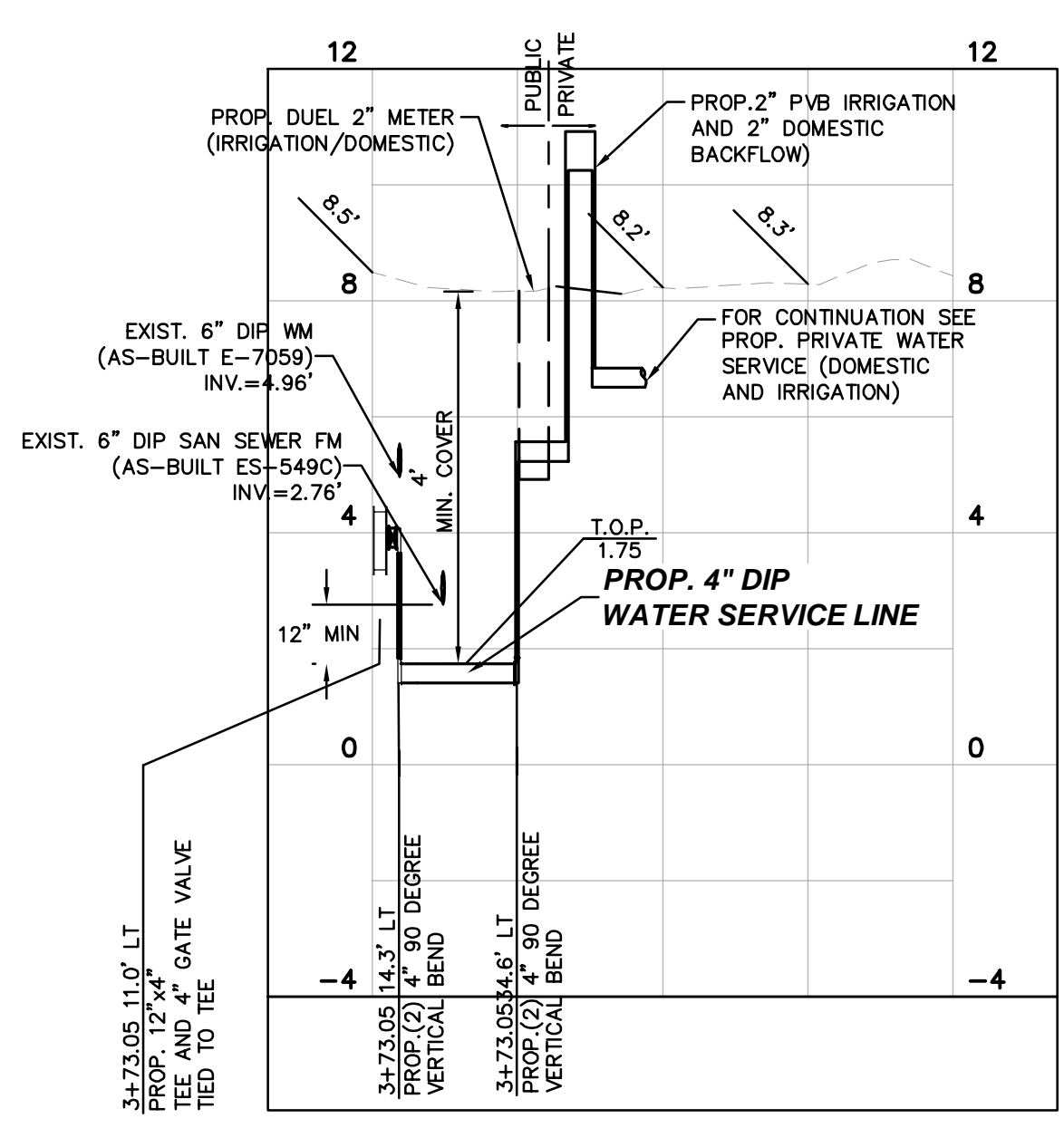
PROP. PUBLIC 6 IN SAN. LATERAL



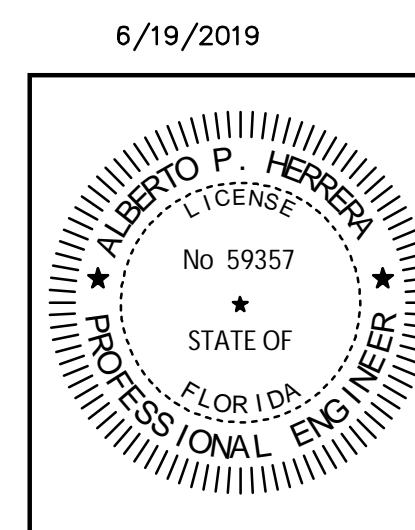
PROP. PRIVATE 8 IN SAN. LATERAL



**PROP. 12 IN D.I.P. WATERMAIN
 NW 14TH STREET**



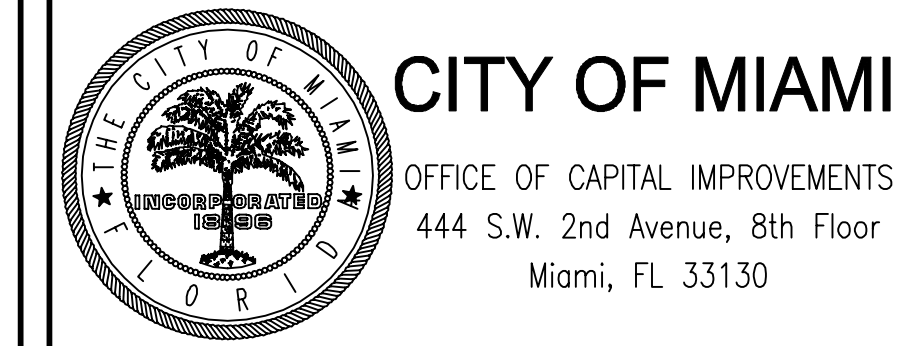
**PROP. 4 IN D.I.P. WATER SERVICE
 (DOMESTIC/IRRIGATION)**



THIS ITEM HAS BEEN DIGITALLY SIGNED AND SEALED BY ALBERTO P. HERRERA, P.E., ON THE DATE ADJACENT TO THE SEAL.
 PRINTED COPIES OF THIS DOCUMENT ARE NOT CONSIDERED SIGNED AND SEALED AND THE SIGNATURE MUST BE VERIFIED ON ANY ELECTRONIC COPIES.

Sunshine811
 Call 811 or www.sunshine811.com two full business days before digging to have utilities located and marked.
 Check positive response codes before you dig!

SPACE RESERVED FOR CITY OF MIAMI APPROVAL STAMP



**PBA FERN ISLE PARK REDEVELOPMENT
 CITY OF MIAMI, PROJECT NO. B-40543
 2304 N.W. 14TH STREET, MIAMI, FL 33125**

**WATER AND SEWER
 PROFILES**

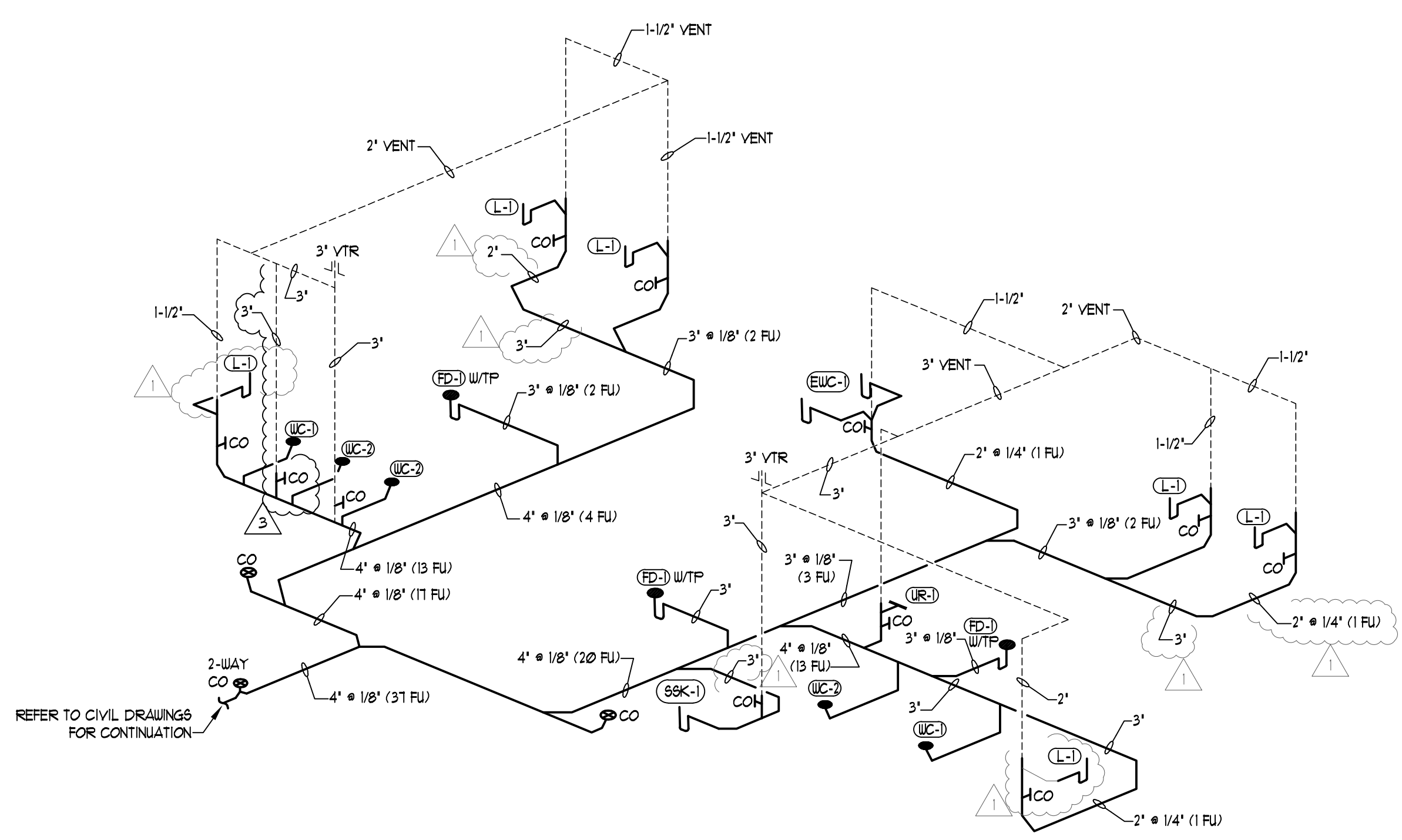
SHEET TITLE:

LICENSED PROFESSIONAL
 ALBERTO HERRERA, P.E.
 FLORIDA LICENSE NUMBER
 59357

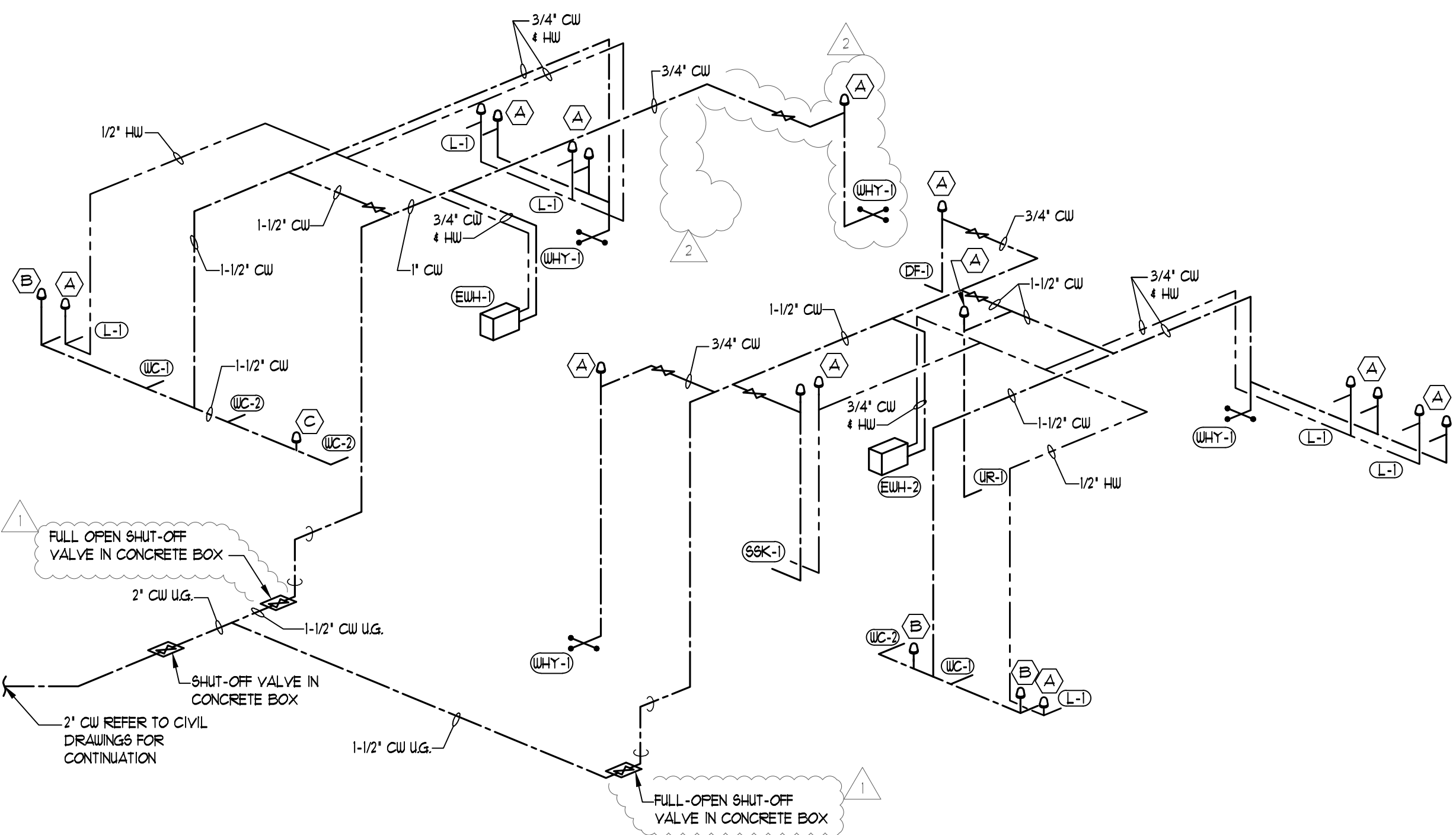
No.	REVISIONS - SUBMITTALS	DATE

PAGE No. SHEET No.
C-603

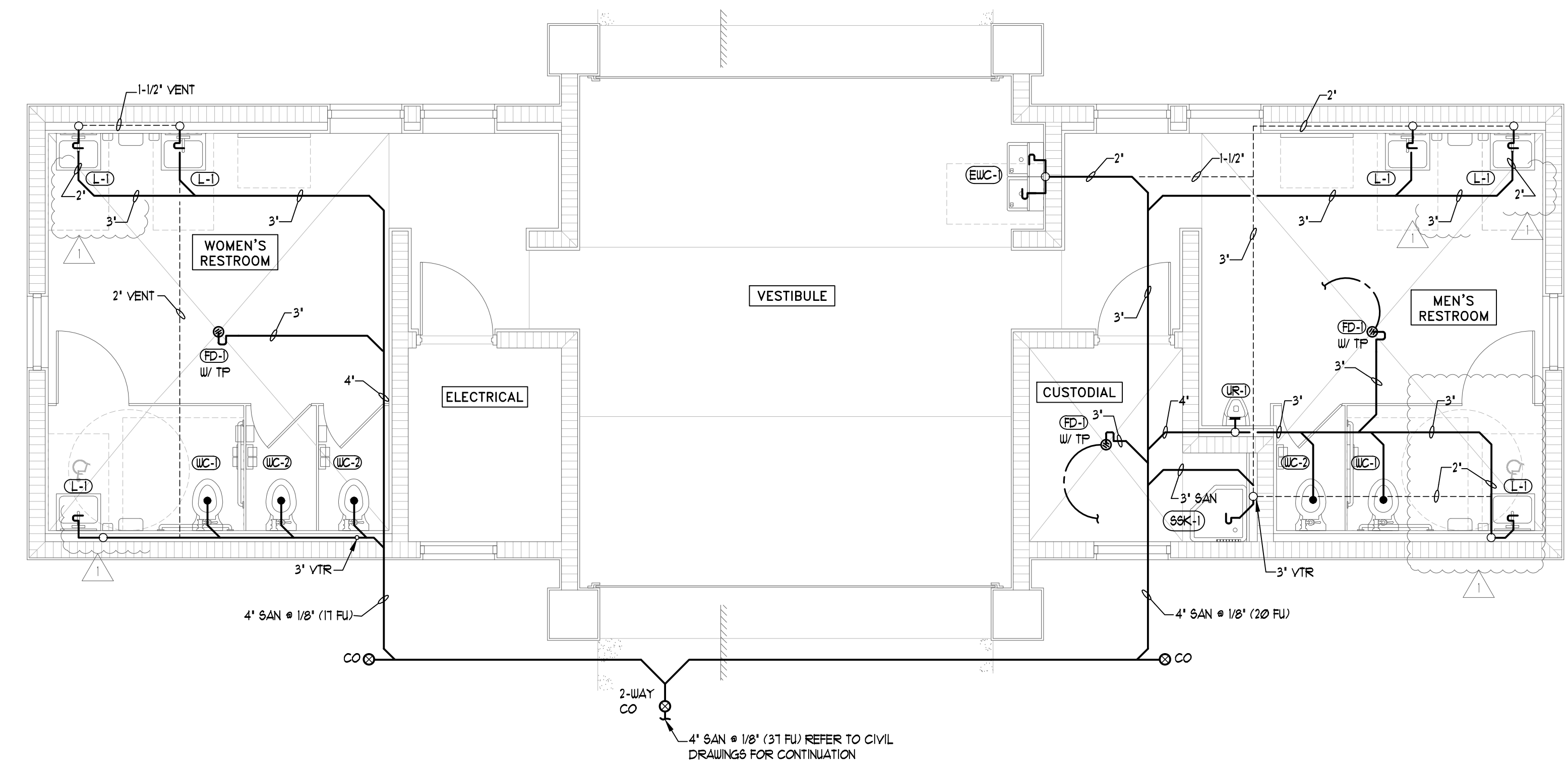
This document, together with the concepts and designs presented herein, as an instrument of service, is intended only for the specific purpose and client for which it was prepared. Reuse of and improper reliance on this document without written authorization and adaptation by Kimley-Horn and Associates, Inc. shall be without liability to Kimley-Horn and Associates, Inc.



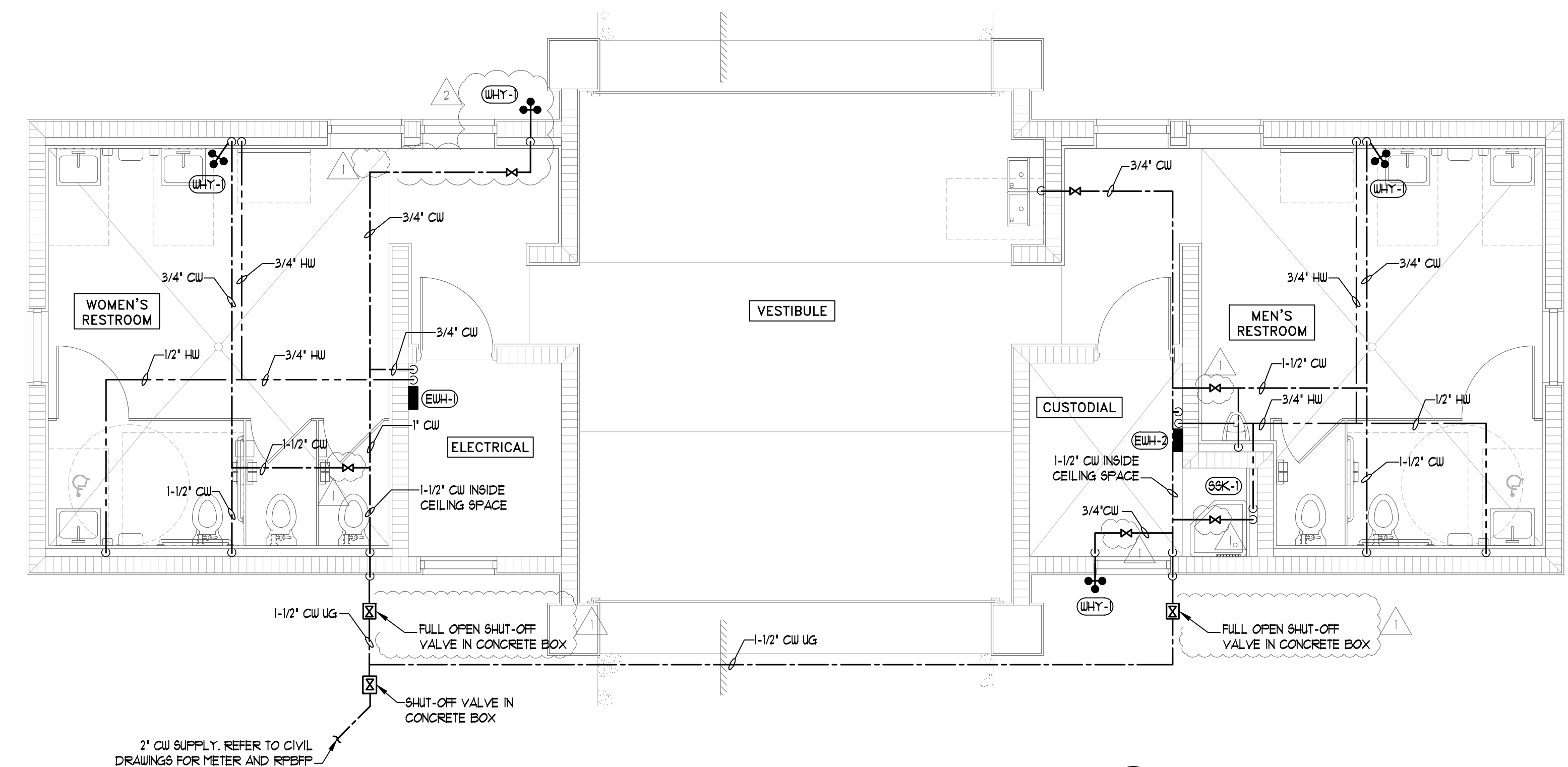
SANITARY WASTE ISOMETRIC DIAGRAM
N.T.S.



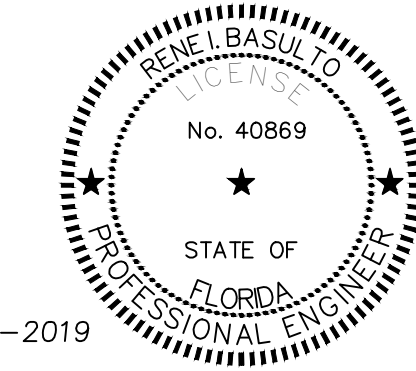
DOMESTIC WATER ISOMETRIC DIAGRAM
N.T.S.



RESTROOM FLOOR PLAN - PLUMBING SANITARY
SCALE: 1/4" = 1'-0"



RESTROOM FLOOR PLAN - DOMESTIC WATER
SCALE: 1/4" = 1'-0"



This item has been digitally signed and sealed by Rene I. Basulto, P.E. on the date adjacent to the seal.
Printed copies of this document are not considered signed and sealed and the signature must be verified on any electronic copies.

Project No.- 18018
BASULTO ASSOCIATES
CONSULTING ENGINEERS
Rene I. Basulto, PE 14160 Palmetto Frontage Road
PE 40869 - FL CA06722 Suite 22, Miami Lakes, FL 33016
www.basulto.com 305.698.3988, fax: 305.698.3985

SPACE RESERVED FOR CITY OF MIAMI APPROVAL STAMP



PBA FERNISLE PARK REDEVELOPMENT
CITY OF MIAMI, PROJECT NO. B-40543
2304 N.W. 14TH STREET, MIAMI, FL 33125

RESTROOMS SANITARY AND DOMESTIC WATER LINES ISOMETRICS

SHEET TITLE:

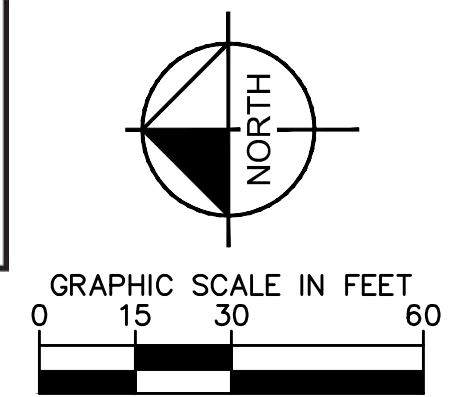
LICENSED PROFESSIONAL
RENE I. BASULTO, P.E.
FL LICENSE NUMBER
REC. #40869
DATE:

No.	REVISIONS - SUBMITTALS	DATE
1	BUILDING DEPARTMENT COMMENTS	02/04/2019
2	BUILDING DEPARTMENT COMMENTS	04/26/2019
3	BUILDING DEPARTMENT COMMENTS	06/13/2019

This document, together with the concepts and designs presented herein, is intended only for the specific purpose and client for which it was prepared. Reuse of any part of this document without written authorization and adaptation by Kimley-Horn and Associates, Inc. shall be without liability to Kimley-Horn and Associates, Inc. Call 811 or www.sunshine811.com two full business days before digging to have utilities located and marked. Check positive response codes before you dig!

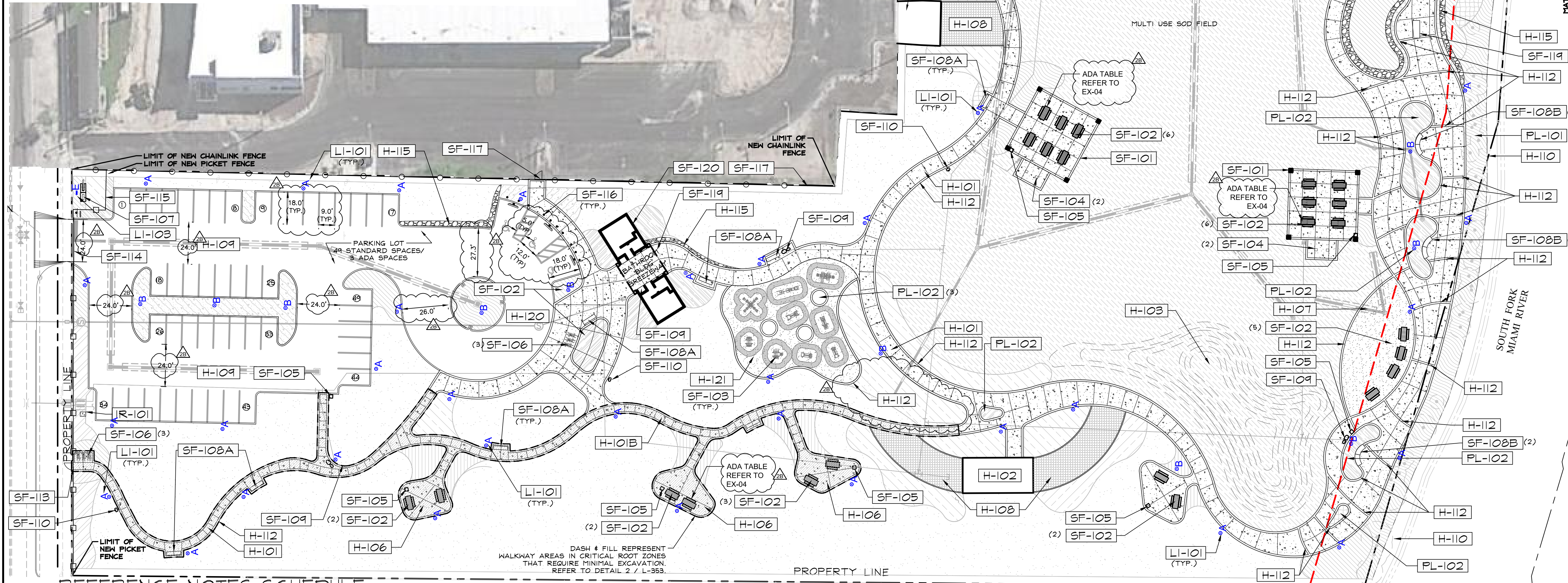


Call 811 or www.sunshine811.com two full business days before digging to have utilities located and marked.
Check positive response codes before you dig!



PARKING REQUIREMENTS	EXISTING	CHANGE	PROPOSED	REQUIRED
Parking Spaces	35	+18	52	-
Handicap Parking Spaces	1	+2	3	3

ZONING TABLE: ZONE CS (CVC)	REQUIRED	PROVIDED
LOT AREA	10,000 SF MIN	236,340 SF
LOT WIDTH	50 FT	231.06 FT
LOT COVERAGE	80% MAX	6.29%
OPEN SPACE	10% LOT AREA MIN.	89%



REFERENCE NOTES SCHEDULE

SYMBOL	HARDSCAPE DESCRIPTION	DETAIL	SYMBOL	SITE FURNISHING DESCRIPTION	DETAIL	SYMBOL	LIGHTING DESCRIPTION	DETAIL
H-101	CONCRETE WALKWAY	1 / L-350	SF-101	40'X40' SHELTER	2,3 / EX-5	LH-101	LIGHT POLE	L-500 / SEE MEP
H-102B	CONCRETE WALKWAY IN CRITICAL ROOT ZONE	3 / L-353	SF-102	PICNIC TABLE	1 / EX-4	LH-102	LIGHTED BOLLARD	L-500 / SEE MEP
H-102	EXISTING STORAGE BUILDING		SF-103	OUTDOOR EXERCISE EQUIPMENT (4-STATION)	SHEETS EX-1, EX-2, EX-3	LH-103	MONUMENT FLOOD LIGHT	L-500 / SEE MEP
H-103	SODDED MOUNDS	REFER TO CIVIL PLANS	SF-104	CHARCOAL GRILL	1 / EX-1			
H-104	EXISTING WOOD RAMP		SF-105	TRASH RECEPTACLE	3 / EX-4			
H-105	EXISTING BRIDGE		SF-106	BIKE RACK	2 / EX-4			
H-106	CONCRETE PAD FOR PICNIC TABLES	1 / L-350	SF-107	MONUMENT SIGN	1 / L-353			
H-107	GRAVEL AREA	2 / L-350	SF-108A	STANDARD BENCH	1 / EX-6			
H-108	STABILIZED TURF - DRIVEABLE GRASS SYSTEM	3 / L-350	SF-108B	SPECIAL BENCH	2 / EX-6			
H-109	ASPHALT PARKING LOT	REFER TO CIVIL PLANS	SF-109	DRINKING FOUNTAIN	4 / EX-4			
H-110	EXISTING RIP-RAP		SF-110	PET STATION	2 / EX-1			
H-111	EXISTING KAYAK LAUNCH	TO BE COORDINATED	SF-111	NEW PEDESTRIAN GATE	3 / L-352			
H-112	12" WIDE CONCRETE BAND	1 / L-350	SF-114	VEHICULAR SLIDING GATE	1 / L-352			
H-115	OOLITE STONE BOULDER DRY STACK	4 / L-352	SF-115	6' HT. PICKET FENCE	3 / L-352			
H-120	DROP OFF AREA	REFER TO CIVIL PLANS	SF-116	VEHICULAR BOLLARD	3 / EX-6			
H-121	STABILIZED GRAVEL AT FITNESS EQUIPMENT AREA	4 / EX-6	SF-117	NEW 6' HT. CHAIN LINK FENCE & GATE	4 / L-353			
PL-101	LANDSCAPE BUFFER	REFER TO LANDSCAPE PLANS	SF-119	NEW PUBLIC ART PIECE	TO BE PROVIDED BY CITY			
PL-102	LANDSCAPE CUT-OUT	REFER TO LANDSCAPE PLANS	SF-120	RESTROOM BUILDING	REFER TO ARCHITECT'S DRAWINGS			

GENERAL SITE NOTES:
 1. LIMITS OF SCOPE DEFINED BY PROPERTY LINE.
 2. REFER TO CIVIL ENGINEER'S DRAWINGS FOR GRADING, SURFACE DRAINAGE, UTILITY LOCATIONS, AND R.O.W.
 3. REFER TO CIVIL ENGINEER'S DRAWINGS FOR SPOT ELEVATIONS AND FINISH FLOOR ELEVATIONS.
 4. GENERAL CONTRACTOR, SUBCONTRACTORS, AND INSTALLERS SHALL CROSS REFERENCE ARCHITECTURE, ENGINEERING, AND LANDSCAPE DRAWINGS THROUGHOUT IMPLEMENTATION TO ENSURE THE DESIGN INTENT IS MET. ANY DISCREPANCIES SHALL BE NOTED AND BROUGHT TO THE GENERAL CONTRACTOR'S ATTENTION FOR CLARIFICATION WITH THE LANDSCAPE ARCHITECT.
 5. CONTRACTOR SHALL BE RESPONSIBLE FOR VISITING SITE PRIOR TO BIDDING IN ORDER TO FAMILIARIZE THEMSELVES WITH ALL EXISTING CONDITIONS AFFECTING THE WORK, INCLUDING BUT NOT LIMITED TO, PRIVATE AND PUBLIC UTILITIES ON AND OFF SITE, ACCESS ROADS, AND OTHER SUPPORT FACILITIES.
 6. CONTRACTOR MUST NOTIFY LANDSCAPE ARCHITECT IMMEDIATELY OF ANY EXPECTED OR UNKNOWN CONDITIONS OR DISCREPANCIES IN THE DRAWINGS AND CONTRACT DOCUMENTS, AS WELL AS ANY ERRORS OR OMISSIONS ON THE DRAWINGS PRIOR TO PROCEEDING WITH THE WORK OR SHOP FABRICATION.

ARCHAEOLOGICAL REQUIREMENT NOTE
 THE SITE IS CONSIDERED AN ARCHAEOLOGICAL SITE. A CERTIFICATE TO DIG (CTD) IS REQUIRED PRIOR TO CONSTRUCTION. ARCHAEOLOGICAL MONITORING BY A PROFESSIONAL ARCHAEOLOGIST MEETING THE SECRETARY OF THE INTERIOR'S PROFESSIONAL QUALIFICATIONS STANDARDS AND APPROVED BY THE CITY OF MIAMI IS REQUIRED FOR SUBSURFACE EXCAVATION. THE CONTRACTOR IS TO RETAIN AND PAY FOR THE ARCHAEOLOGICAL CONSULTANT TO PREPARE THE CTD TO MONITOR EXCAVATIONS DURING CONSTRUCTION IN ACCORDANCE WITH THE REQUIREMENTS SET FORTH BY THE CITY OF MIAMI HISTORIC PRESERVATION OFFICE. SHOULD THE CONTRACTOR RETAIN A DIFFERENT APPROVED ARCHAEOLOGICAL CONSULTANT, THEY WILL BE REQUIRED TO OBTAIN A NEW LETTER OF AGREEMENT (LOA) AND A CTD AT THEIR OWN EXPENSE. LETTER OF AGREEMENT WAS PREPARED BY JOSEPH F. MANKOWSKI, M.A. RPA, FROM ADVANCED ARCHAEOLOGY, INC. 1126 S. FEDERAL HIGHWAY #263, FT. LAUDERDALE, FLORIDA 33316. 954-270-6624

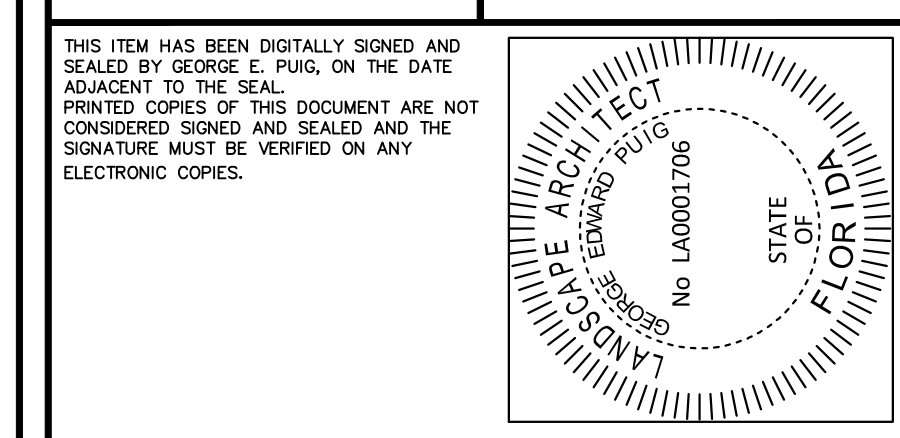
SPACE RESERVED FOR CITY OF MIAMI APPROVAL STAMP



PBA FERN ISLE PARK REDEVELOPMENT
CITY OF MIAMI, PROJECT NO. B-40543
2304 N.W. 14TH STREET, MIAMI, FL 33125

HARDSCAPE PLAN

SHEET TITLE:

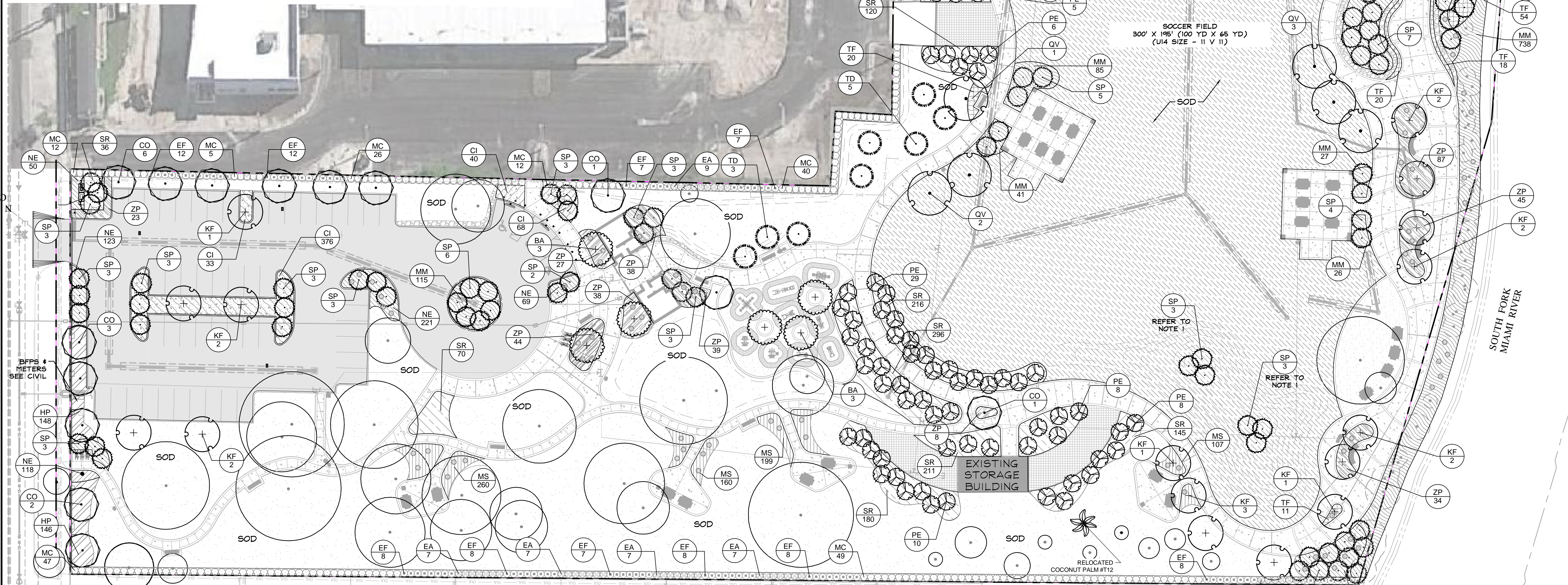


No.	REVISIONS - SUBMITTALS	DATE
01	PERMIT SET REV 01	03/08/19
02	PERMIT SET REV 02	04/26/19
02B	WARRANT SET REV 02	06/04/19



Call 811 or www.sunshine811.com two full business days before digging to have utilities located and marked.

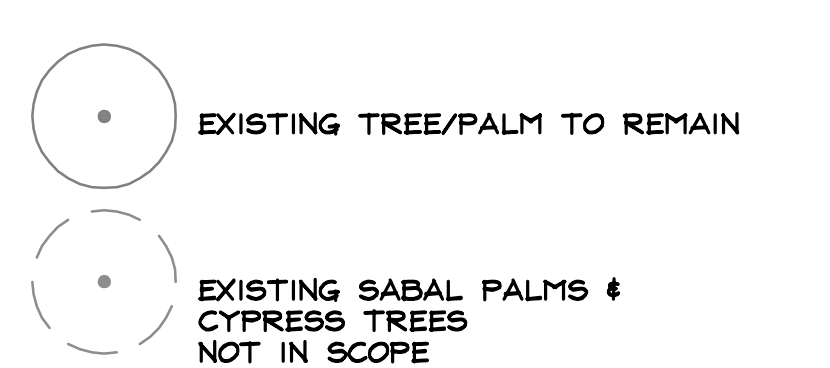
Check positive response codes before you dig!



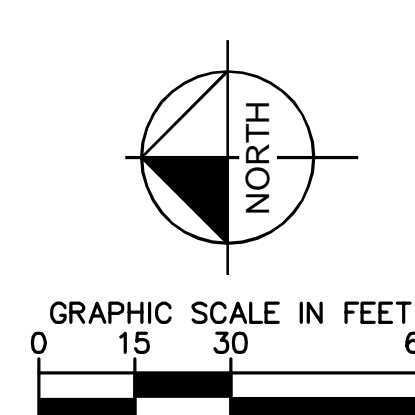
PLANT SCHEDULE

TREES	CODE	QTY	BOTANICAL NAME	COMMON NAME	CONT.	CAL./DBH	HT.
	BA	6	BULNESIA ARBOREA	VERAWOOD	FG	4" CAL. MN	20' HT.
	CO	14	CHRYSOPHYLLUM OLIVIFORME	SATINLEAF	FG	4" CAL. MN	15' HT.
	KF	17	KRUGIODENDRON FERREUM	BLACK IRONWOOD	FG	4" CAL. MN	15' HT.
	QV	15	QUERCUS VIRGINIANA	SOUTHERN LIVE OAK	B&B	8"-10" CAL.	25' OAH
	TD	18	TAXODIUM DISTICHUM	BALD CYPRESS	FG	2" CAL.	12' HT.
	SP	115	SABAL PALMETTO	CURVED TRUNK SABAL PALM	FG	2" CAL.	16'-22' CT.
	PE	66	PINUS ELLIOTTI	SLASH PINE	FG	2" CAL.	15' HT.
	EA	49	EUGENIA AXILLARIS	WHITE STOPPER	CONT.	48" OC	38" HT.
	EF	108	EUGENIA FOETIDA	SPANISH STOPPER	CONT.	48" OC	38" HT.
	MC	299	MYRCANTHES FRAGRANS	SIMPSON'S STOPPER	CONT.	48" OC	38" HT.
	SC2	93	SERENOA REPENS 'CINEREA'	SILVER SAW PALMETTO	CONT.	AS SHOWN	38" HT.

SHRUB AREAS	CODE	QTY	BOTANICAL NAME	COMMON NAME	CONT.	SPACING	SIZE
	CI	517	CHRYSOBALANUS ICADO 'HORIZONTAL'	HORIZONTAL COCOPLUM	CONT.	24" O.C.	20" HT.
	HP	294	HAMELIA PATENS 'COMPACTA'	DWARF FIRE BUSH	CONT.	24" O.C.	24" X 24"
	MM	1,068	MUHLENBERGIA CAPILLARIS	PINK MUHLY	CONT.	30" O.C.	20" HT.
	MS	727	MICROSORUM SCOLOPENDRIUM	WART FERN	CONT.	18" O.C.	18" X 18"
	NE	3,458	NEPHROLEPIS EXALTATA	SWORD FERN	CONT.	18" OC	12" HT.
	PN	258	PSYCHOTRIA NERVOISA	WILD COFFEE	CONT.	24" O.C.	24" X 24"
	SR	1,368	SERENOA REPENS 'SILVER FORM'	SILVER SAW PALMETTO	CONT.	30" O.C.	24" HT.
	TF	249	TRIPSACUM FLORIDANUM	FLORIDA GAMAGRASS	CONT.	30" O.C.	24" X 24"
	ZP	383	ZAMIA PUMILA	COONIE	CONT.	30" OC	24" HT.
SOOSEED	CODE	QTY	BOTANICAL NAME	COMMON NAME	CONT.	SPACING	SIZE
	CD	68,822 SF	CYNODON DACTYLON	BERNALDA GRASS 'TIFTUF'	SOD	SOD	SOD
	SOD	64,785 SF	STENOTAPHRUM SECUNDATUM	ST. AUGUSTINE 'PALMETTO'	SOD	SOD	SOD



NOTE:
1. (6) SABALS PALMS ON SODDED MOUND TO BE ANCHORED WITH PLATINUS TREE ANCHOR. REFER TO DETAIL 1 / EX-6. REFER TO DETAIL C/L-450 FOR PLANTING ON SLOPE.
2. REFER TO 2/L-352 FOR PLANT ID PLAQUE.
3. CONTRACTOR SHALL PROVIDE A MISCELLANEOUS WHOLESALE PLANTING ALLOWANCE OF \$5,000. PLANTING TO BE SELECTED BY LANDSCAPE ARCHITECT AND COORDINATED ON-SITE.

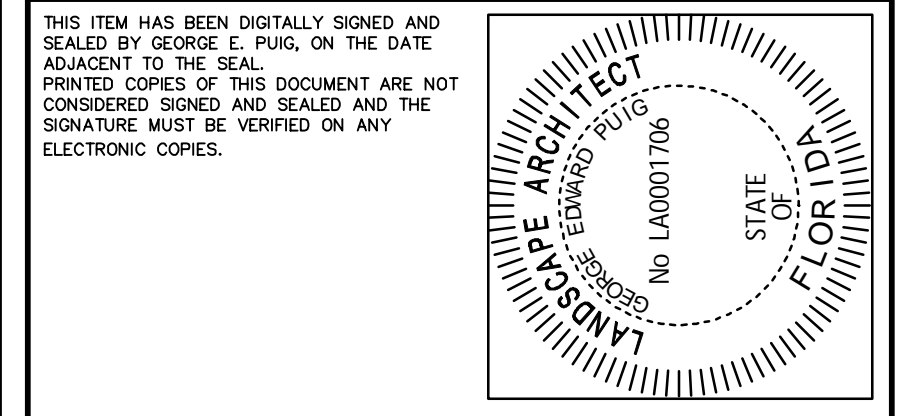


SPACE RESERVED FOR CITY OF MIAMI APPROVAL STAMP



PBA FERN ISLE PARK REDEVELOPMENT
CITY OF MIAMI, PROJECT NO. B-40543
2304 N.W. 14TH STREET, MIAMI, FL 33125

SHEET TITLE:
LANDSCAPE PLAN



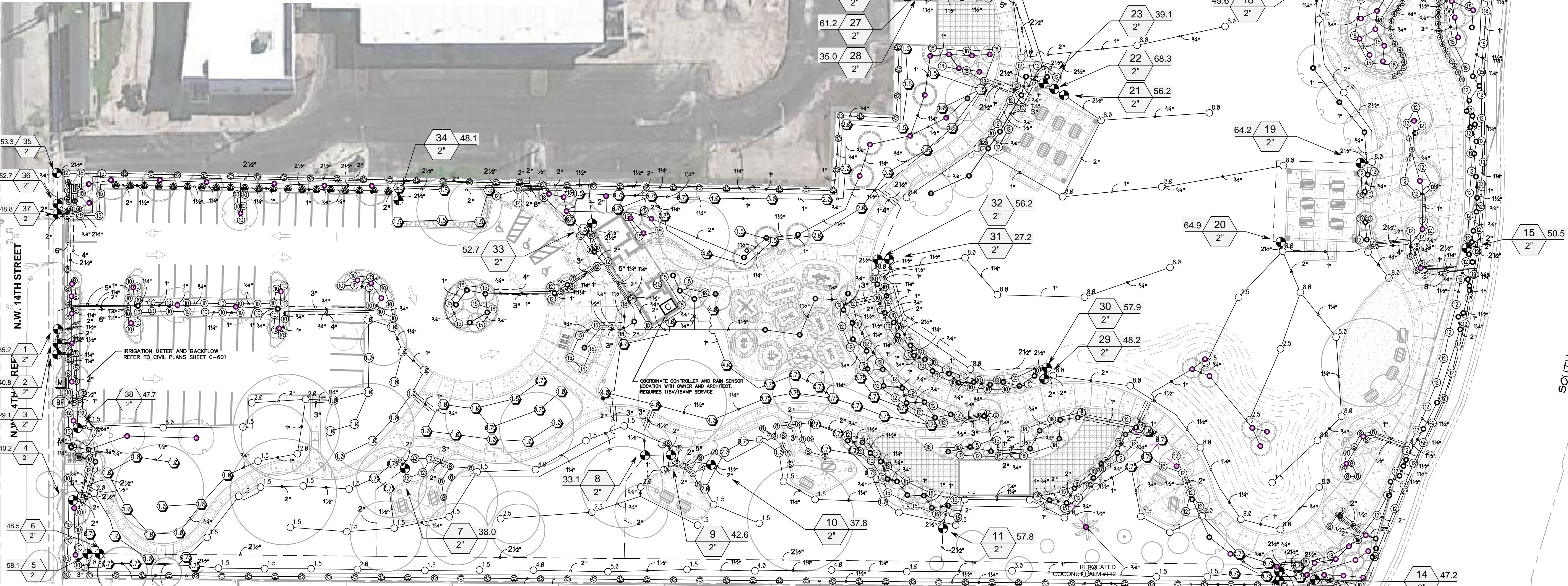
No.	REVISIONS - SUBMITTALS	DATE
01	PERMIT SET REV 01	03/08/19
02	PERMIT SET REV 02	04/26/19
02B	WARRANT SET REV 02	06/04/19
03B	WARRANT SET REV 03	06/21/19

This document, together with the concepts and designs presented herein, is intended only for the specific purpose and client for which it was prepared. Reuse of and improper reliance on this document without written authorization and adaptation by Kimley-Horn and Associates, Inc. shall be without liability to Kimley-Horn and Associates, Inc. Plotted By: Gonzalez, Gregory Sheet: PBA Fern Isle Layout: L-400 LANDSCAPE PLAN June 21, 2019 10:21:00am K:\CRG_LIRG\04\64\0051 pba fern isla\landscape\CADD\plansheets\L-400 Landscape Plan.dwg



Call 811 or www.sunshine811.com two full business days before digging to have utilities located and marked.

Check positive response codes before you dig!



IRRIGATION SCHEDULE

SYM.	MANUFACTURER/MODEL	GPM
1	RAIN BIRD 1804-SAM-FRS IS STRIP SERIES	0.67
2	RAIN BIRD 1812-FRS 50 SERIES	0.42
3	RAIN BIRD 1812-FRS IS STRIP SERIES	1.26
4	RAIN BIRD 1812-FRS ADJ	1.64
5	RAIN BIRD 1812-FRS ADJ	2.60
6	RAIN BIRD 1800AF FLOOD	0.58
7	RAIN BIRD 9504-PC	1.54
8	RAIN BIRD 9504-PC	2.07
9	RAIN BIRD 9504-PC	2.51
10	RAIN BIRD 9506-PC, PC-R	9.04
11	RAIN BIRD 9506-PC, PC-R	4.01
12	RAIN BIRD 9506-PC, PC-R	5.04
13	RAIN BIRD 9506-PC, PC-R	8.08

VALVE SCHEDULE

SYM.	MANUFACTURER/MODEL	Valve Number	Valve Size
1	RAIN BIRD PEB	1	2"
2	PEB CO 8291A 2"	2	2"
3	RAIN BIRD RSD-DEF	3	2"
4	RAIN BIRD RSD-DEF	4	2"
5	RAIN BIRD RSD-DEF	5	2"
6	RAIN BIRD LIGHT COMMERCIAL PUMP STATION	6	2"
7	WATER METER 2"	7	2"
8	IRRIGATION LATERAL LINE: PVC CLASS 200 SDR 21	8	2"
9	IRRIGATION MAINLINE: PVC CLASS 200 SDR 21	9	2"
10	PIPE SLEEVE: PVC SCHEDULE 40	10	2"

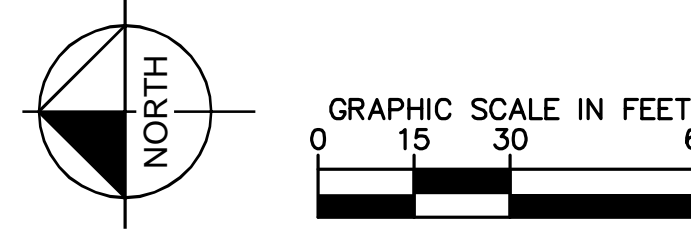
NOTE: REFER TO SHEET L-650 FOR FULL IRRIGATION SCHEDULE AND VALVE SCHEDULE.

VALVE SCHEDULE

NUMBER	MODEL	SIZE	TYPE	GPM
1	RAIN BIRD PEB	2"	SHRUB SPRAY	35.24
2	RAIN BIRD PEB	2"	BUBBLER	40.80
3	RAIN BIRD PEB	2"	TURF ROTOR	21.04
4	RAIN BIRD PEB	2"	TURF ROTOR	40.11
5	RAIN BIRD PEB	2"	SHRUB SPRAY	58.08
6	RAIN BIRD PEB	2"	TURF ROTOR	48.46
7	RAIN BIRD PEB	2"	SHRUB SPRAY	38.02
8	RAIN BIRD PEB	2"	TURF ROTOR	38.10
9	RAIN BIRD PEB	2"	SHRUB SPRAY	42.62
10	RAIN BIRD PEB	2"	TURF ROTOR	31.82
11	RAIN BIRD PEB	2"	BUBBLER	51.80
12	RAIN BIRD PEB	2"	BUBBLER	62.90
13	RAIN BIRD PEB	2"	SHRUB SPRAY	47.84
14	RAIN BIRD PEB	2"	SHRUB SPRAY	41.24
15	RAIN BIRD PEB	2"	SHRUB SPRAY	50.54
16	RAIN BIRD PEB	2"	SHRUB SPRAY	36.74
17	RAIN BIRD PEB	2"	BUBBLER	66.30
18	RAIN BIRD PEB	2"	SHRUB SPRAY	44.62
19	RAIN BIRD PEB	2"	TURF ROTOR	64.24
20	RAIN BIRD PEB	2"	TURF ROTOR	64.88
21	RAIN BIRD PEB	2"	TURF ROTOR	58.21
22	RAIN BIRD PEB	2"	TURF ROTOR	68.25
23	RAIN BIRD PEB	2"	BUBBLER	34.10
24	RAIN BIRD PEB	2"	SHRUB SPRAY	40.14
25	RAIN BIRD PEB	2"	TURF ROTOR	31.95
26	RAIN BIRD PEB	2"	TURF ROTOR	51.20
27	RAIN BIRD PEB	2"	BUBBLER	61.20
28	RAIN BIRD PEB	2"	SHRUB SPRAY	28.04
29	RAIN BIRD PEB	2"	TURF ROTOR	48.18

IRRIGATION SYSTEM NOTES

- CONTRACTOR SHALL REFER TO THE IRRIGATION DETAILS, IRRIGATION SCHEDULE, SPECIFICATIONS AND ALL CONTRACT DOCUMENTS FOR FURTHER AND COMPLETE INSTRUCTIONS.
- IRRIGATION QUANTITIES ARE PROVIDED FOR CONVENIENCE. IN THE EVENT OF QUANTITY DISCREPANCIES THE DRAWING SHALL TAKE PRECEDENCE. ANY DISCREPANCIES SHALL BE BROUGHT TO THE ATTENTION OF THE LANDSCAPE ARCHITECT PRIOR TO BIDDING.
- ANY SUBSTITUTIONS FOR SPECIFIED IRRIGATION EQUIPMENT MUST BE APPROVED BY THE LANDSCAPE ARCHITECT OR OWNER'S REPRESENTATIVE IN WRITING PRIOR TO CONSTRUCTION.
- CONTRACTOR SHALL FIELD ADJUST LOCATION OF IRRIGATION EQUIPMENT AS NECESSARY TO AVOID DAMAGE TO EXISTING UNDERGROUND UTILITIES AND/OR INTERFERE WITH EXISTING ABOVE GROUND ELEMENTS. ALL FIELD ADJUSTMENTS SHALL BE COORDINATED AT THE CONTRACTOR'S EXPENSE AND SHALL BE COMPLETED WITH THE OWNER'S REPRESENTATIVE AND THE LANDSCAPE ARCHITECT.
- CONTRACTOR SHALL FAMILIARIZE HIM/HERSELF WITH THE LIMITS OF WORK AND EXISTING CONDITIONS AND VERIFY ALL INFORMATION. IF DISCREPANCIES EXIST, CONTRACTOR SHALL NOTIFY OWNER'S REPRESENTATIVE IN WRITING WITHIN SEVEN CALENDAR DAYS OF NOTICE TO PROCEED.
- IRRIGATION PLAN IS DIAGRAMMATIC. EQUIPMENT SHOWN ON IMPERVIOUS SURFACES IS FOR GRAPHIC CLARITY UNLESS OTHERWISE NOTED. CONTRACTOR SHALL INSTALL ALL EQUIPMENT WITHIN LANDSCAPE AREAS IN PROPERTY LIMITS.
- LATERAL, MAINLINE, BUBBLER AND VALVE LOCATIONS SHOWN ARE FOR DIAGRAMMATICAL PURPOSES ONLY.
- RUN ALL PIPES THROUGH PLANTER AREAS AND ALONGSIDE OTHER SLEEVING TO MAXIMUM EXTENT POSSIBLE.
- TRENCH ALONG SIDEWALKS, CURBS AND FENCES AS MUCH AS POSSIBLE.
- CONTRACTOR SHALL NOT DAMAGE THE ROOTS OF EXISTING TREES. AVOID TRENCHING UNDER DRIP LINES OF EXISTING TREES TO MAXIMUM EXTENT POSSIBLE. IF IT IS NOT POSSIBLE TO AVOID TRENCHING UNDER DRIP LINES, CONTRACTOR IS TO NOTIFY LANDSCAPE ARCHITECT PRIOR TO TRENCH EXCAVATION FOR APPROVAL.
- GROUP AND LOCATE VALVES INSIDE PLANTER AREAS (TYP.).
- THE IRRIGATION SYSTEM SHALL PROVIDE 100% COVERAGE FOR ALL PROPOSED LANDSCAPE AREAS.
- ZONES SHALL BE SEPARATED BY WATER NEED AND EQUIPMENT. BUBBLERS SHALL BE SEPARATE FROM SPRAYS, SPRAYS SEPARATE FROM BUBBLERS.
- CONTRACTOR SHALL PROVIDE A BLACK POWDER COATED ALUMINUM LOCKABLE CAGE AROUND BACKFLOW PREVENTER, IRRIGATION CONTROLLER, PUMP, ETC.



SPACE RESERVED FOR CITY OF MIAMI APPROVAL STAMP



PBA FERN ISLE PARK REDEVELOPMENT
CITY OF MIAMI, PROJECT NO. B-40543
2304 N.W. 14TH STREET, MIAMI, FL 33125

IRRIGATION PLAN
SHEET TITLE:

THIS ITEM HAS BEEN DIGITALLY SIGNED AND SEALED BY GEORGE E. PUGL, ON THE DATE ADJACENT TO THE SEAL. PRINTED COPIES OF THIS DOCUMENT ARE NOT CONSIDERED SIGNED AND SEALED AND THE SIGNATURE MUST BE VERIFIED ON ANY ELECTRONIC COPIES.

No.	REVISIONS - SUBMITTALS	DATE
01	PERMIT SET REV 01	03/08/19
02	PERMIT SET REV 02	04/26/19
02B	WARRANT SET REV 02	06/04/19
03B	WARRANT SET REV 03	06/21/19

This document, together with the concepts and designs presented herein, is intended only for the specific purpose and client for which it was prepared. Reuse of and improper reliance on this document without written authorization and adaptation by Kimley-Horn and Associates, Inc. shall be without liability to Kimley-Horn and Associates, Inc. Plotted By: Gonzalez, Gregory Sheet: PBA Fern Isle. Layout: L-600 - IRRIGATION PLAN June 21, 2019 10:42:44am K:\PROG_LURG\04-36-430051 job fern isle\landscape\CADD\plansheets\L-600 Irrigation Plan.dwg © 2017 KIMLEY-HORN AND ASSOCIATES, INC.

