

NELCO

TESTING AND ENGINEERING SERVICES

DOUBLE RING INFILTRATION TEST

Client: Kimley-Horn
2151 Le Jeune Road, Suite 202
Coral Gables, Florida 33134

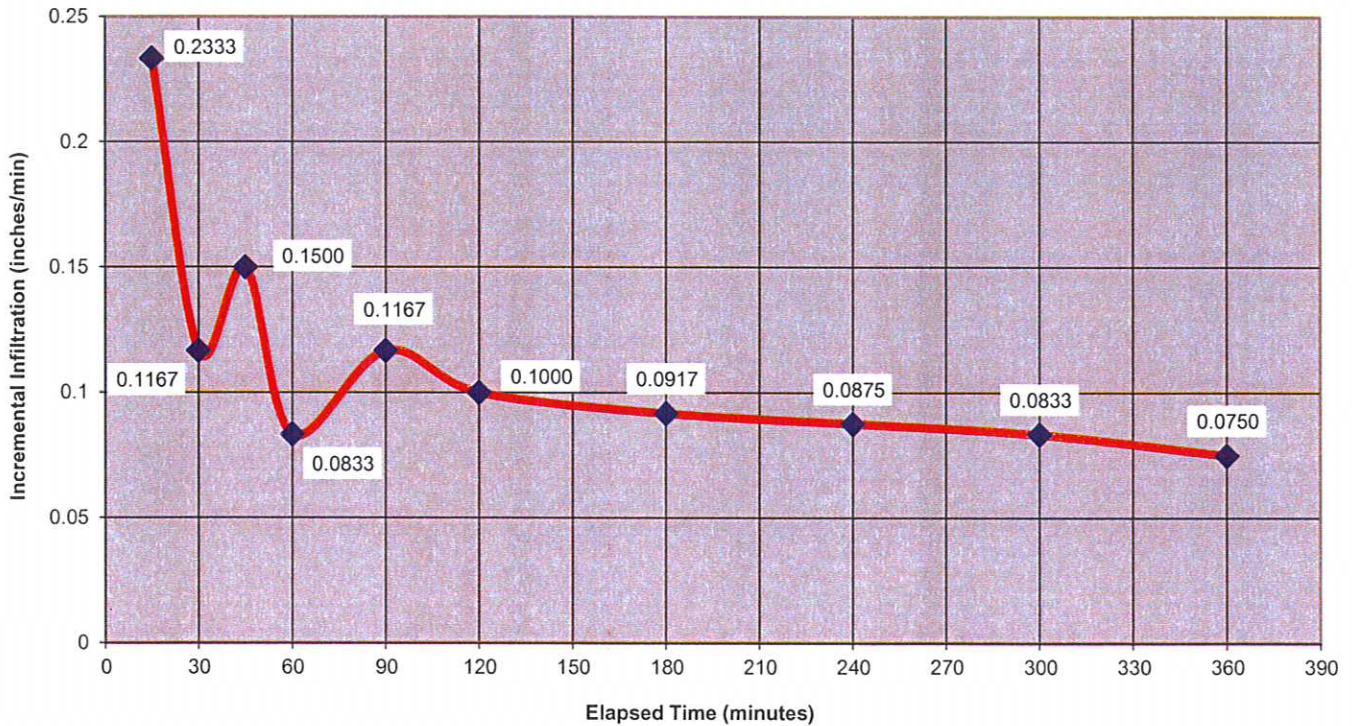
Date: 2/28/17
Job: DR-170367

Project Name: Fern-Isle Redevelopment Project
Project Location: 2300 NW 14 Street, Miami, Florida

Test Location: Please refer to enclosed Test Location Sketch.

Test No.: DR-1 **Test Ring Diam.:** 12 inches and 24 inches **Test Water Level:** 20 Inches

Infiltration Rate VS Time



Avg. Infiltration Rate (per square foot): 0.1138 inches/min

Surface Description: Brown sand with some gravel

Per ASTM D-3385: Standard Test Method for Infiltration Rate of Soils in Field Using Double-Ring Infiltrometer

V.M.B. Venkatesan
V.M.B. Venkatesan
Professional Engineer No. 63107
State of Florida
3/1/17

NELCO

TESTING AND ENGINEERING SERVICES

DOUBLE RING INFILTRATION TEST

Client: Kimley-Horn
2151 Le Jeune Road, Suite 202
Coral Gables, Florida 33134

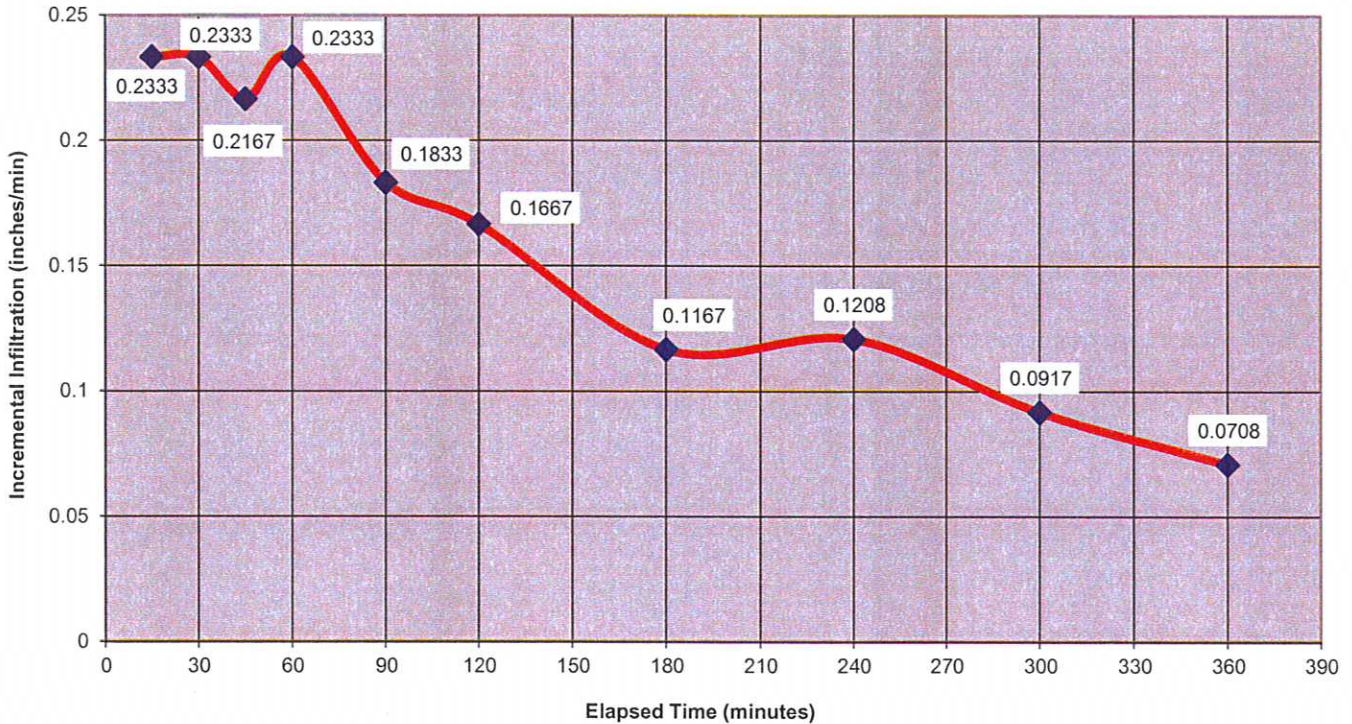
Date: 3/1/17
Job: DR-170367

Project Name: Fern-Isle Redevelopment Project
Project Location: 2300 NW 14 Street, Miami, Florida

Test Location: Please refer to enclosed Test Location Sketch.

Test No.: DR-2 **Test Ring Diam.:** 12 inches and 24 inches **Test Water Level:** 20 Inches

Infiltration Rate VS Time



Avg. Infiltration Rate (per square foot): 0.1667 inches/min

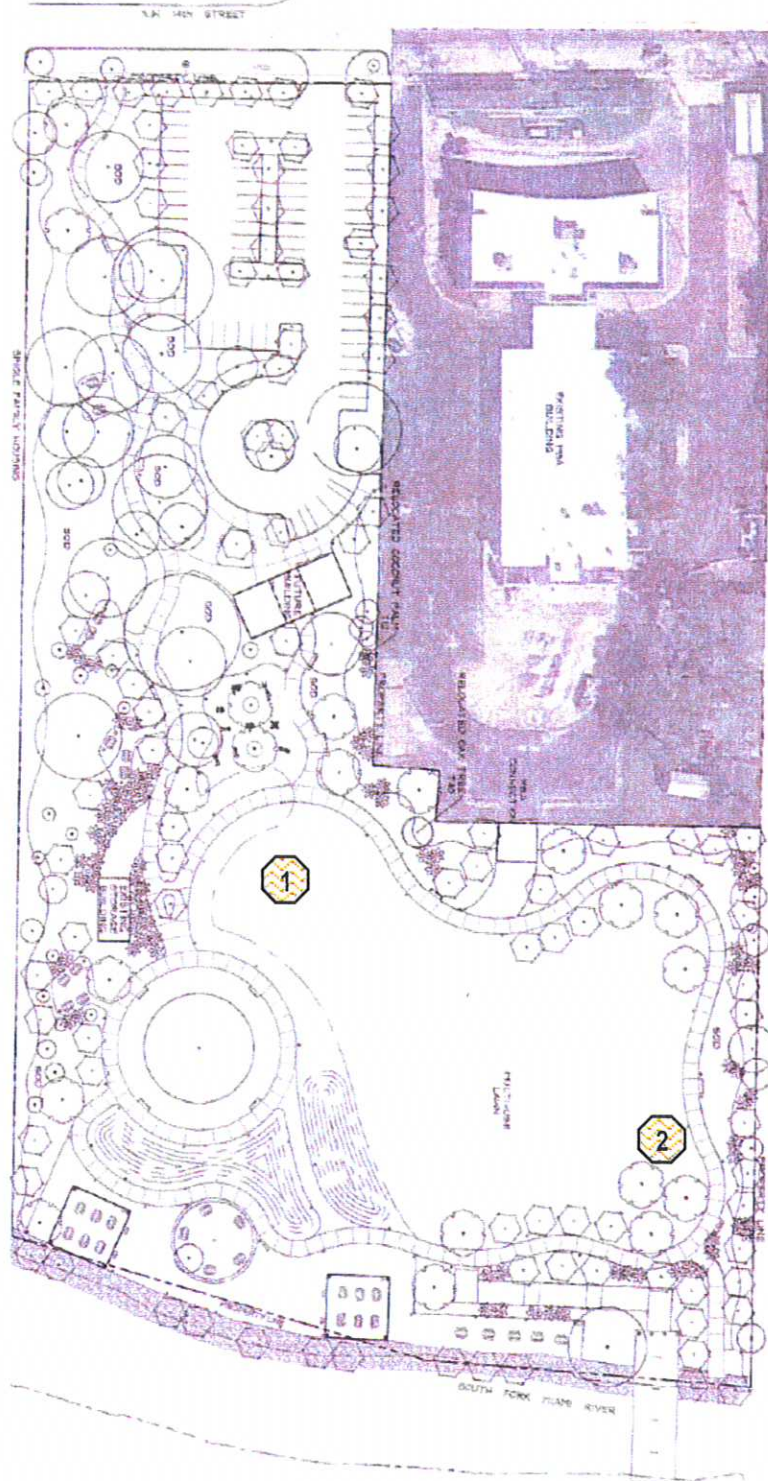
Surface Description: Brown sand with some gravel

Per ASTM D-3385: Standard Test Method for Infiltration Rate of Soils in Field Using Double-Ring Infiltrometer

V.M.B. Venkatesan
V.M.B. Venkatesan 3/1/17
Professional Engineer No. 63107
State of Florida

NELCO
TESTING AND ENGINEERING SERVICES

Double Ring Infiltration Test Location Sketch



Double Ring Infiltration Test Location