

# NELCO

## TESTING AND ENGINEERING SERVICES

### DOUBLE RING INFILTRATION TEST

**Client:** Kimley-Horn  
2151 Le Jeune Road, Suite 202  
Coral Gables, Florida 33134

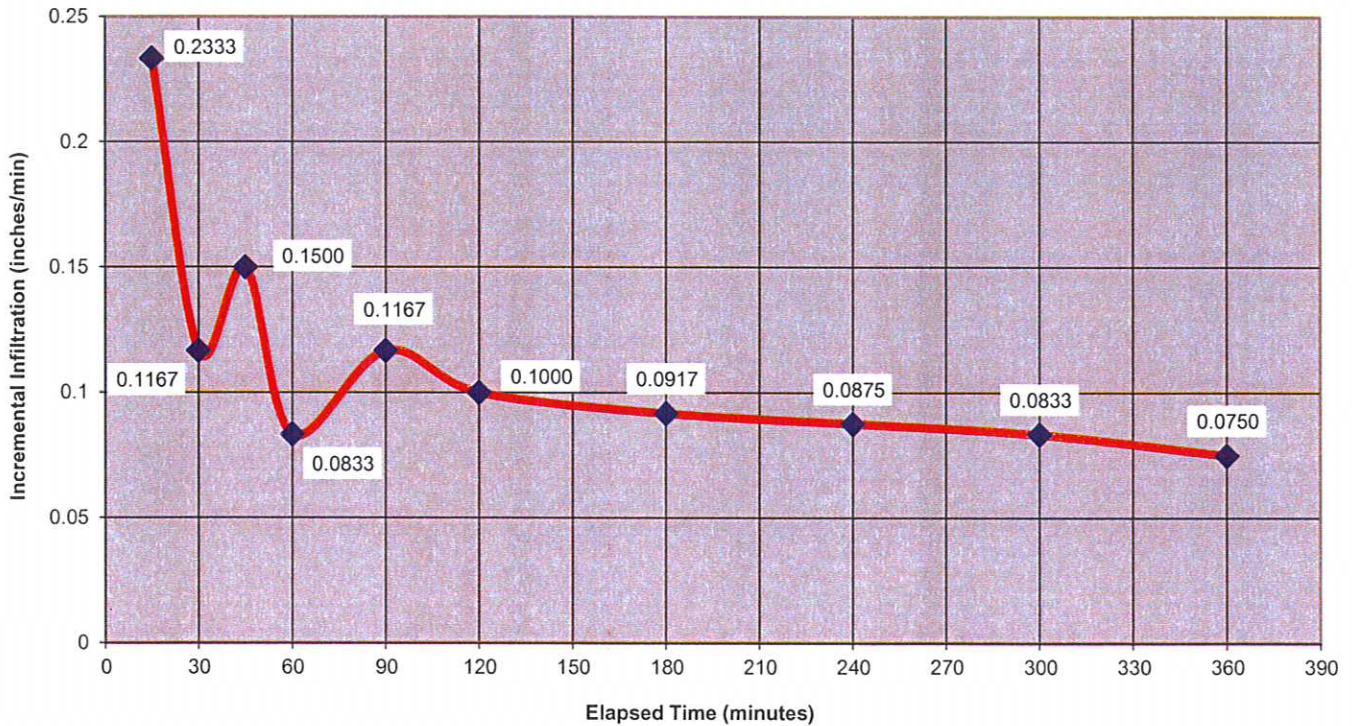
**Date:** 2/28/17  
**Job:** DR-170367

**Project Name:** Fern-Isle Redevelopment Project  
**Project Location:** 2300 NW 14 Street, Miami, Florida

**Test Location:** Please refer to enclosed Test Location Sketch.

**Test No.:** DR-1    **Test Ring Diam.:** 12 inches and 24 inches    **Test Water Level:** 20 Inches

**Infiltration Rate VS Time**



**Avg. Infiltration Rate (per square foot):** 0.1138 inches/min

**Surface Description:** Brown sand with some gravel

Per ASTM D-3385: Standard Test Method for Infiltration Rate of Soils in Field Using Double-Ring Infiltrometer

*V.M.B. Venkatesan*  
V.M.B. Venkatesan  
Professional Engineer No. 63107  
State of Florida  
3/1/17

# NELCO

## TESTING AND ENGINEERING SERVICES

### DOUBLE RING INFILTRATION TEST

**Client:** Kimley-Horn  
2151 Le Jeune Road, Suite 202  
Coral Gables, Florida 33134

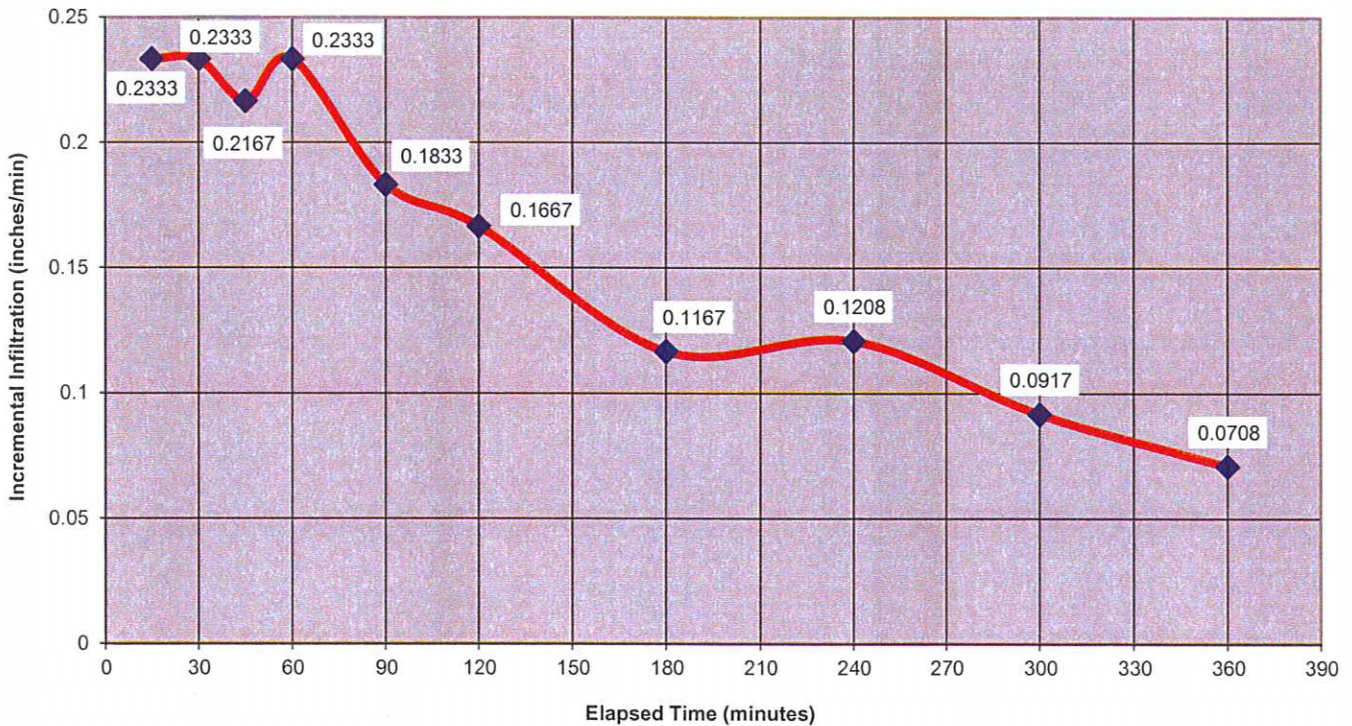
**Date:** 3/1/17  
**Job:** DR-170367

**Project Name:** Fern-Isle Redevelopment Project  
**Project Location:** 2300 NW 14 Street, Miami, Florida

**Test Location:** Please refer to enclosed Test Location Sketch.

**Test No.:** DR-2    **Test Ring Diam.:** 12 inches and 24 inches    **Test Water Level:** 20 Inches

**Infiltration Rate VS Time**



**Avg. Infiltration Rate (per square foot):** 0.1667 inches/min

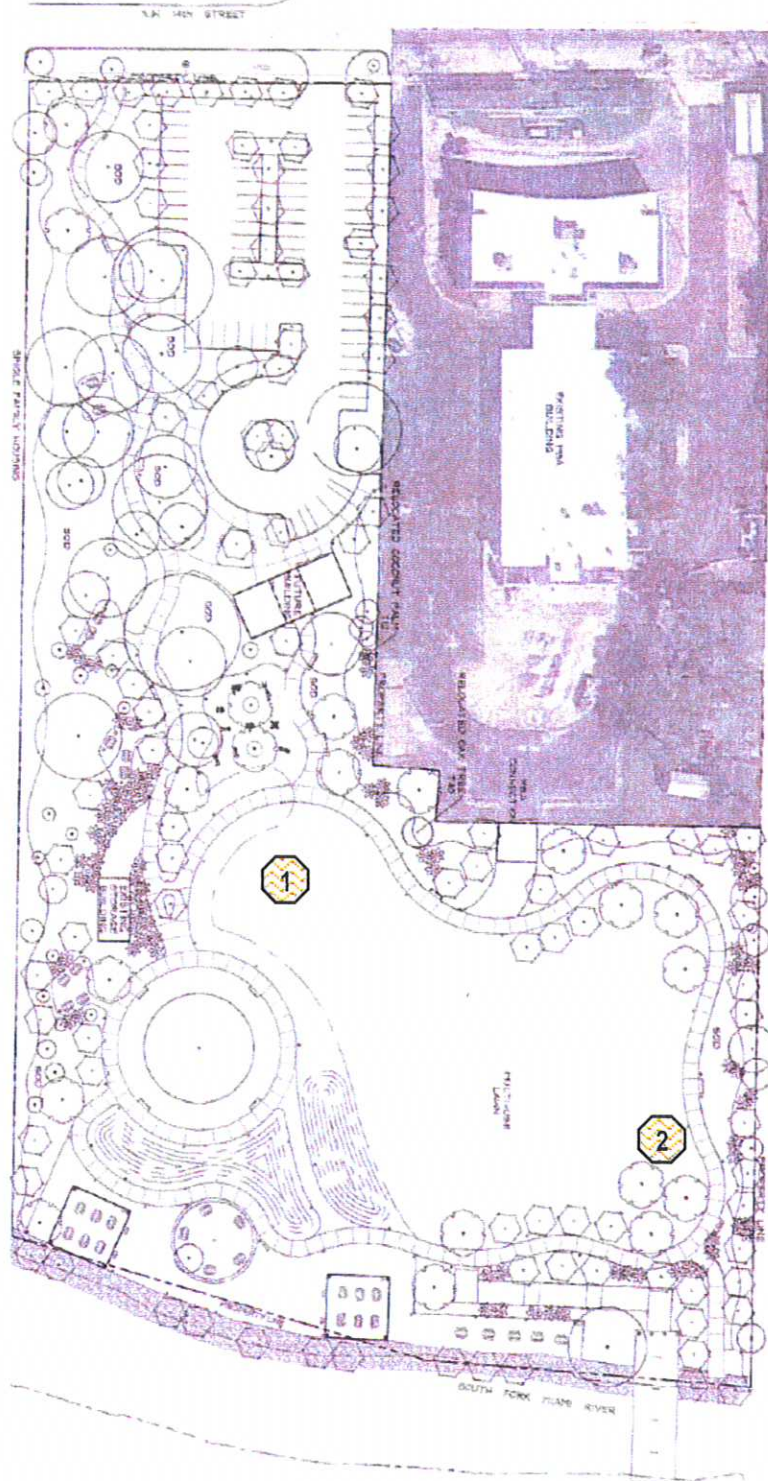
**Surface Description:** Brown sand with some gravel

Per ASTM D-3385: Standard Test Method for Infiltration Rate of Soils in Field Using Double-Ring Infiltrimeter

*V.M.B. Venkatesan*  
V.M.B. Venkatesan 3/1/17  
Professional Engineer No. 63107  
State of Florida

NELCO  
TESTING AND ENGINEERING SERVICES

Double Ring Infiltration Test Location Sketch



Double Ring Infiltration Test Location