

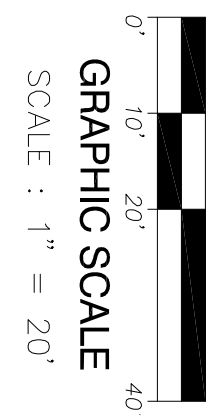
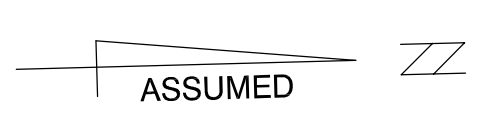
**ABBREVIATIONS**

- A/C Length
- A/C Air Conditioner Pad
- A/S Asphalt
- B/S Brick
- C.B.S. Concrete Block Structure
- C.G. Curb & Gutter
- C/L Center Line
- C.S. Concrete Slab
- D.W. Driveway
- E.T.P. Electric Transformer Pad
- F.F.E. Finished Floor Elevation
- F.N.P. Found Non-Plastic Shale
- F.R. Found Ruber
- I.D. Identification
- I.N.E. Inverts Floor Elevation
- W/L Monument Line
- P.B. Pit Book
- P.C.P. Permanent Control Point
- P. Property
- P/L Property Line
- P.R.M. Permanent Reference Monument
- R/W Right-of-Way Line
- S.M. Stake
- S.M.S. Stake Monument
- V.G. Valley Gutter
- C.L.F. Chain Link Fence

**LEGEND**

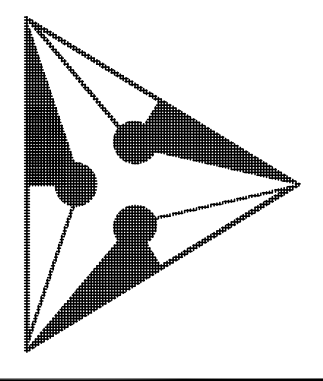
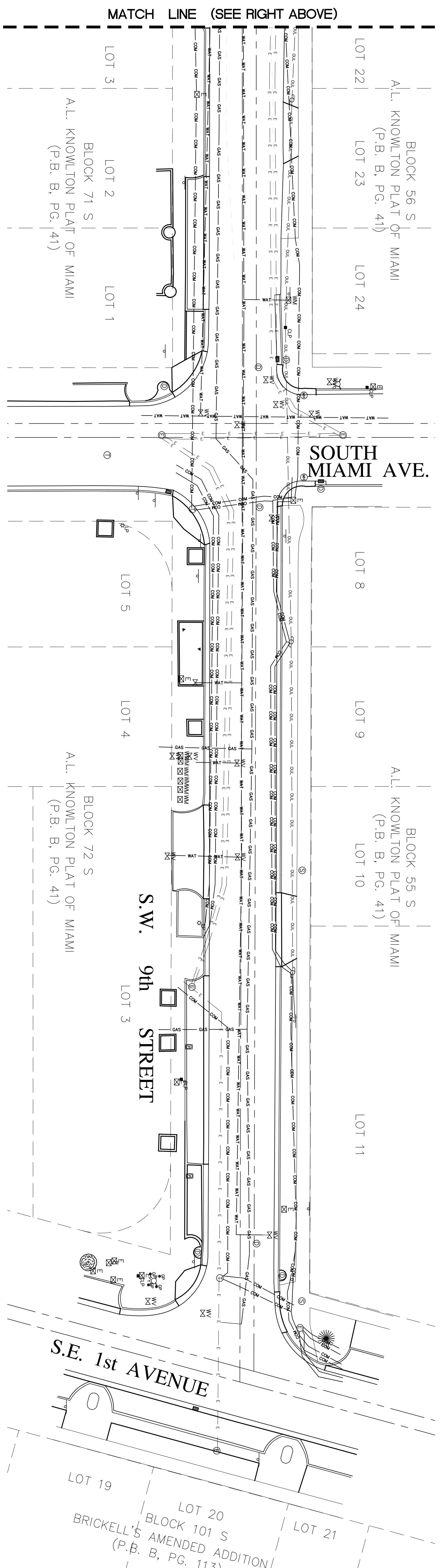
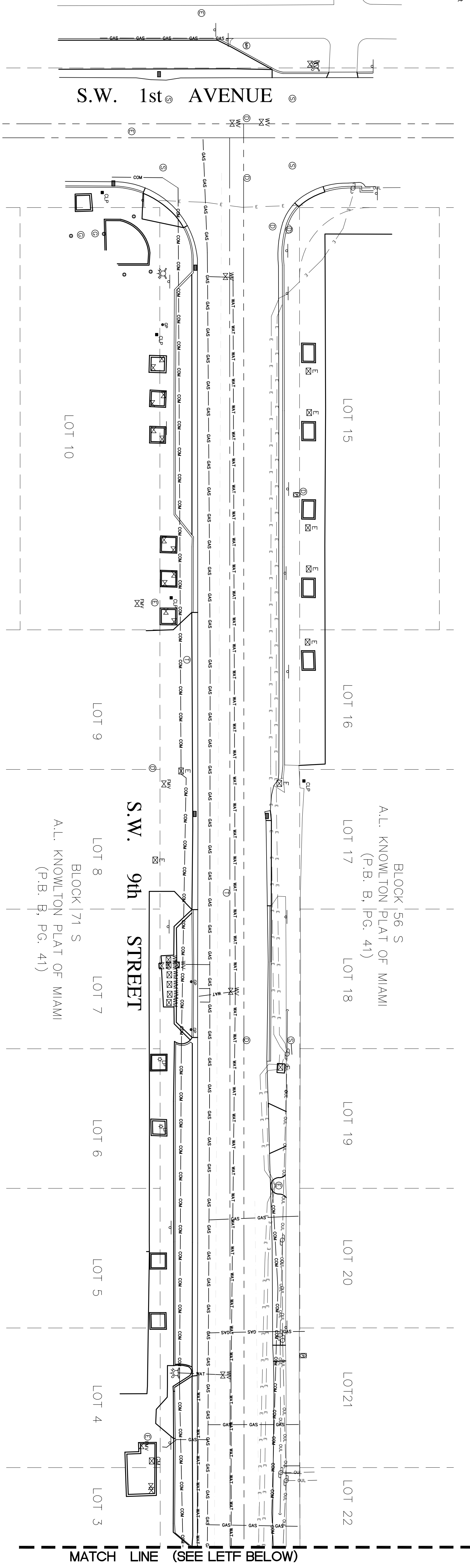
- CLP Concrete Light Pole
- MLP Metal Light Pole
- GW Guy Wire
- UP Utility Power Pole
- FW Fire Hydrant
- WM Water Meter
- EB Electric Box
- TB Telephone Box
- OU Overhead Utility Lines
- LP Light Pole
- GV Gas Valve
- WV Water Valve
- MM Water Manhole
- TM Telephone Manhole
- MW Monitoring Well
- PL Parking Meter
- CL Chain Link Fence
- UL Unknown Manhole
- SV Sewer Valve
- MB Mail Box
- SE Spot Elevation
- 1.5"-15'-10" Diameter-Height-Spread Right-of-Way Lines
- PC Property Center
- TS Traffic Sign
- CB Catch Basin
- DM Drainage Manhole
- WF Wood Fence
- IF Iron Fence
- C.B.S. Wall
- CO Clean Out
- GR Guard Pole
- B.N.N. Back Flow Preventer
- IC Irrigation Control Valve
- FB Telephone Booth
- FM Fence main Valve

- Underground Electric Line
- Underground Water Line
- Underground Gas Line
- Underground Sewer Line
- Underground Communication Line
- Underground Unknown Line
- Underground Sprinkler Line
- Underground Fiber Optic Line
- Underground Irrigation Line



**GPR SURVEY**

of  
**PORTION OF S.W. 9th STREET, S.W. 10th STREET, S.W. 11th STREET AND S.W. 12th STREET BETWEEN S.W. 1st AVENUE AND S.E. 1st AVENUE, MIAMI, SECTION 12, TOWNSHIP 54 SOUTH, RANGE 41 EAST MIAMI - DADE COUNTY, FLORIDA**  
 for  
**TY LIN INTERNATIONAL**



**J. Bonfill & Associates, Inc.**  
 ARCHITECTS, LAND SURVEYORS & MAPPERS  
 Florida Certificate of Authorization LB3398  
 9360 S.W. 72nd Street Suite 265  
 Miami, Florida 33173 (305) 598-8383

**GPR SURVEY**  
 of  
 PORTION OF S.W. 9th STREET, S.W. 10th STREET, S.W. 11th STREET AND S.W. 12th STREET BETWEEN S.W. 1st AVE. AND S.E. 1st AVE., MIAMI, SECTION 12, TOWNSHIP 54 SOUTH, RANGE 41 EAST MIAMI - DADE COUNTY, FLORIDA  
 for  
**TY LIN INTERNATIONAL**

REVISIONS	BY

Project:	10-0240
Job:	10-0240
Date:	08-24-2010
Drawn:	G.P., J.S.
Checked:	J.B.
Scale:	AS SHOWN
Field Book:	ON FILE
SHEET 6 OF 9	





