

**Commission:**

**Mayor**

Tomas P. Regalado

**Chairman / D5 Commissioner**

Keon Hardemon

**Vice Chairman / D2 Commissioner**

Ken Russell

**D1 Commissioner**

Wifredo (Willy) Gort

**D3 Commissioner**

Frank Carollo

**D4 Commissioner**

Francis Suarez

**City Manager**

Daniel J. Alfonso

# CITY OF MIAMI CAPITAL IMPROVEMENTS PROGRAM

JEOVANNY RODRIGUEZ, P.E., DIRECTOR

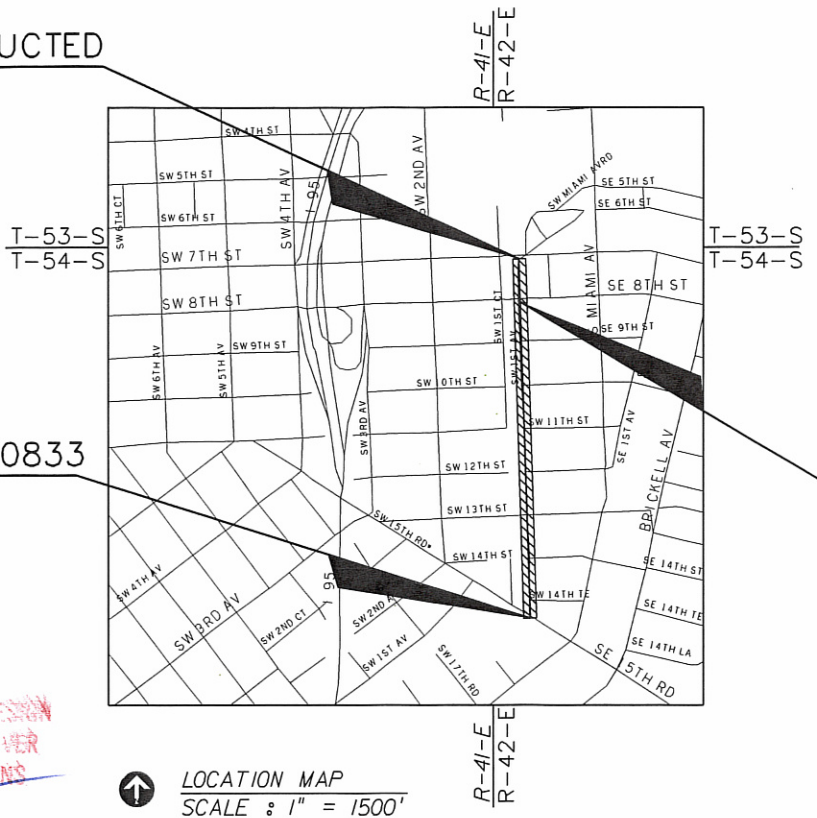
SW 1st AVE  
FROM SW 7th ST TO SW 15th RD  
MILLING AND RESURFACING IMPROVEMENTS  
PROJECT No. B-30833



END PROJECT TO BE CONSTRUCTED  
BY BRICKELL CITYCENTRE  
STA. 39+00.00

BEGIN PROJECT B-30833  
STA. 10+40.00

END PROJECT B-30833  
BEGIN PROJECT TO BE  
CONSTRUCTED BY  
BRICKELL CITYCENTRE  
STA. 35+04.50



LOCATION MAP  
SCALE : 1" = 1500'

**\*APPROVED**  
APPROVAL PERTAINS TO GENERAL DESIGN  
FEATURES ONLY AND DOES NOT COVER  
A COMPLETE CHECK ON DIMENSIONS  
OR QUANTITIES.  
BY: [Signature]  
DATE: 4/22/16

## INDEX OF SHEETS

SHEET NO.	DESCRIPTION
1	KEY SHEET
2	SUMMARY OF PAY ITEMS
3 - 4	TYPICAL SECTION
5	DRIVEWAY DETAILS
6 - 7	GENERAL NOTES
8 - 13	ROADWAY PLAN
14 - 19	DRAINAGE PLAN
20	TEMPORARY TRAFFIC CONTROL PLAN NOTES
21 - 29	TEMPORARY TRAFFIC CONTROL PLAN
30 - 35	UTILITY ADJUSTMENTS
36 - 37	SWPPP NOTES AND DETAILS
S-1 - S-6	SIGNING & PAVEMENT MARKINGS

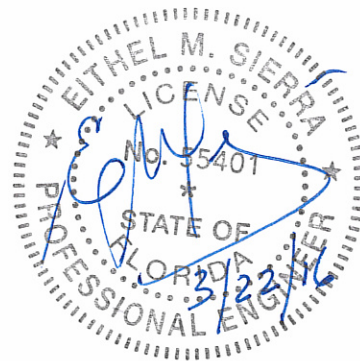
TOPOGRAPHIC SURVEY

1 - 2	MAP OF TOPOGRAPHIC SURVEY
-------	---------------------------

*\*Temporary construction permit required for work within FEC/MDT easement*  
*- Appurtenant to noted on pages 7 & 14.*

LENGTH OF PROJECT		
	LINEAR FEET	MILES
ROADWAY	2464.50	0.467
BRIDGES		
NET LENGTH OF PROJECT	2464.50	0.467
EXCEPTIONS		
GROSS LENGTH OF PROJECT	2464.50	0.467

CITY OF MIAMI PROJECT MANAGER: ORLANDO MISAS  
CITY OF MIAMI CONSTRUCTION MANAGER: DAVID ADATO, P.E.



ROADWAY SHOP DRAWINGS  
TO BE SUBMITTED TO:

EITHEL M. SIERRA, P.E.  
APCTE CORP  
10305 N.W. 41 STREET, SUITE 115  
MIAMI, FL 33178  
(305) 592-7283

PLANS PREPARED BY:

**APCT ENGINEERS**  
A&P Consulting Transportation  
Engineers Corporation  
10305 N.W. 41 Street, Suite 115  
Miami, FL 33178  
(305) 592-7283 / fax: (305) 593-1594  
Vendor No.: 65-0770583  
CA No.: EB-0007797

NOTE: THE SCALE OF THESE PLANS MAY  
HAVE CHANGED DUE TO REPRODUCTION.

ROADWAY PLANS  
ENGINEER OF RECORD: EITHEL M. SIERRA, P.E.

P.E. NO.: 55401

SHEET  
NO.

1

GOVERNING STANDARDS AND SPECIFICATIONS:  
- CITY OF MIAMI ENGINEERING STANDARDS FOR  
DESIGN AND CONSTRUCTION DATED DECEMBER 2010.  
- FLORIDA DEPARTMENT OF TRANSPORTATION,  
DESIGN STANDARDS DATED 2015,  
AND STANDARD SPECIFICATIONS FOR ROAD AND  
BRIDGE CONSTRUCTION DATED 2015,  
AS AMENDED BY CONTRACT DOCUMENTS.