

APPROVED

FEB 09 2018

Miami Dade County
Department of Health
Engineering Section

MIAMI-DADE WATER AND SEWER DEPARTMENT

PIPE LINE ENGINEERING AND CONSTRUCTION DIVISION

3071 S.W. 38th AVENUE MIAMI, FLORIDA 33146-1520

FURNISH & INSTALL 12-INCH D.I. WATER MAIN ALONG N.W. 32ND ST. FROM N.W. 23RD AVE. TO N.W. 22ND AVE.

PCTS No. 14924, Project No. W017041

CITY OF MIAMI J.P.A No. B-30723

CITY OF MIAMI
FIRE PREV. BUREAU
APPROVED

JAN 26 2018

SIGNATURE

MIAMI-DADE
WATER AND SEWER DEPARTMENT

Date: 2-28-17 Contact: 14924

APPROVED

APPROVED SUBJECT TO NOTATIONS AND CORRECTIONS AS INDICATED.

DISAPPROVED REVISE AS INDICATED BY NOTATIONS AND CORRECTIONS, AND RESUBMIT.

Checking of shop drawing submittals is limited to general design and material arrangements only. It is not intended to be a verification of the items, or total or partial approval. Approval shall not relieve the Contractor of the responsibility for proper design, correct dimensions, or proper fitting, capacity, performance, and other requirements of the Contract.

CHECKED: _____ REVIEWED: *[Signature]*

APPROVED BY

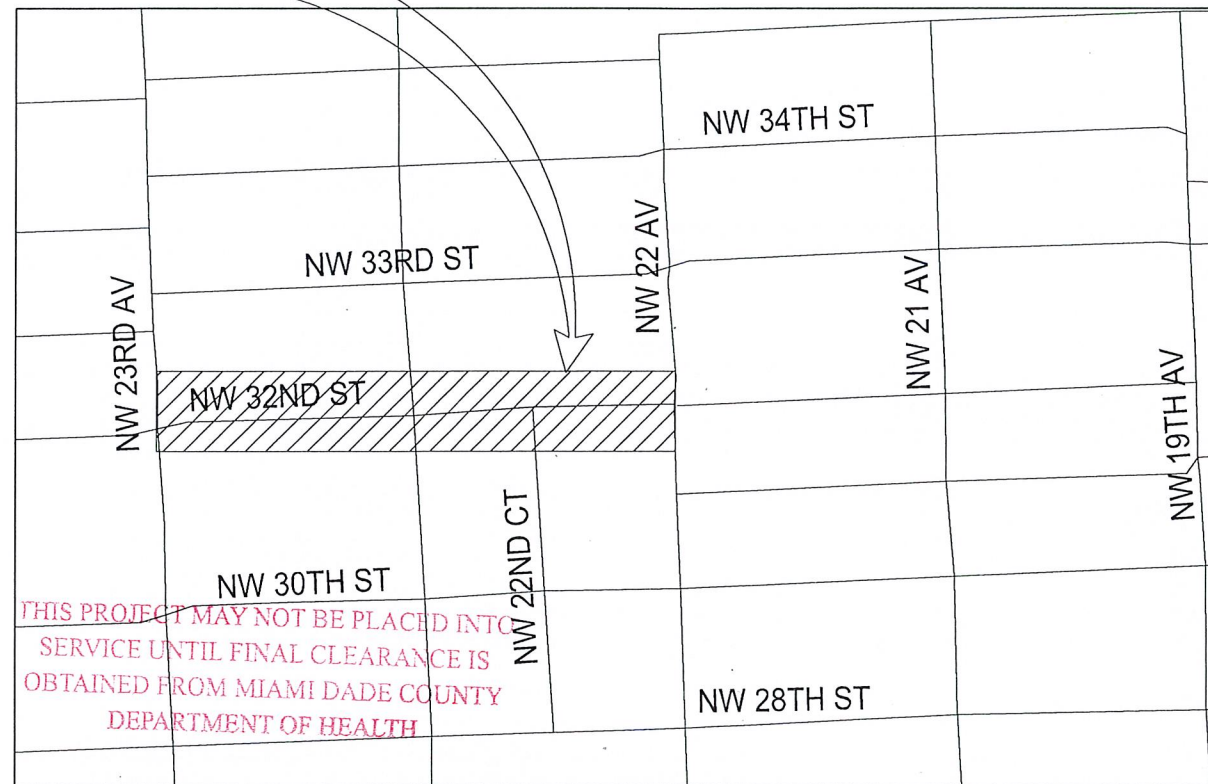
Miami-Dade County
Department of Regulatory and Economic Resources
Environmental Plan Review
Water Mains Only

2018 -WAT-EXT-00026 DATE: 02-02-2018

For the Director: *[Signature]*

Note: This Approval is not intended to cover structural design

PROJECT LOCATION



THIS PROJECT MAY NOT BE PLACED INTO SERVICE UNTIL FINAL CLEARANCE IS OBTAINED FROM MIAMI DADE COUNTY DEPARTMENT OF HEALTH

APPROVED LOCATION PLAN

WATER SUPPLY ONLY

CITY OF MIAMI
STATE OF FLORIDA A PORTION OF SEC. 27 - TWP. 53 S. - RGE. 41 E.
DEPARTMENT OF ENVIRONMENTAL PROTECTION N.T.S.

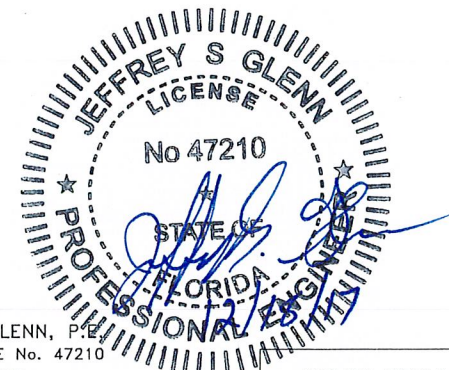
BY
FLORIDA DEPT. OF HEALTH
MIAMI DADE COUNTY

Permit No. 354844-147-DSGP Date: FEB 14 2018

MIAMI-DADE COUNTY
Delivering Excellence Every Day

NOTE: THIS APPROVAL IS NOT INTENDED TO COVER STRUCTURAL DESIGN

ROBERTO CARDONA



JEFFREY S. GLENN, P.E.
FLORIDA LICENSE No. 47210
RS&H, INC.
301 E. PINE STREET
SUITE 350, ORLANDO, FL 32801
(407) 893-5820
CERTIFICATE OF AUTHORIZATION 5620

UTILITY PIPELINE
ENGINEERING &
CONSTRUCTION DIVISION
3501 NW 46 STREET
MIAMI, FL 33142
786-268-5310

SHEET INDEX

- P-1 COVER W-22516-D
- P-2 GENERAL NOTES W-22517-D
- P-3 TOPOGRAPHIC SURVEY W-22518-D
- P-4 GENERAL PLAN W-22519-D
- P-5 PLAN & PROFILE W-22520-D
- P-6 PLAN & PROFILE W-22521-D



301 E. PINE STREET
SUITE 350
ORLANDO, FL 32801
(407) 893-5800
CERTIFICATE OF AUTHORIZATION 5620

CITY OF MIAMI PROJECT MANAGER

MIAMI DADE WASD PROJECT MANAGER

LIN LI

JSG	SLM	DG	PROJECT No.: W017041
SR. PROG. MGR.	ENG. REVIEW	CONST. REVIEW	PCTS No.: 14924
DRAWN: LER	DATE: 12-1-2017	SHEET	P-1 OF 6
FILE NAME: KEYSUW01.DGN		DWG. No.	W-22516-D

GENERAL NOTES

- THE FOLLOWING UTILITY COMPANIES SHOULD BE NOTIFIED 48 HOURS IN ADVANCE OF EXCAVATION IN AREA:
 - FPL
 - AT&T/DISTRIBUTION
 - MDC-PUBLIC WORKS DEPT.
 - COMCAST
 - FLORIDA GAS TRANSMISSION COMPANY
 - FLORIDA CITY GAS
 - PEOPLES GAS
 - FPL FIBERNET
 - CITY OF MIAMI-DADE-PUBLIC WORKS DEPT.
 - MIAMI DADE WATER & SEWER
- ALL ELEVATIONS REFER TO THE CITY OF MIAMI VERTICAL DATUM.
- VALVES AT INTERSECTIONS, BRANCH MAINS OR STOP OUTS SHALL BE RESTRAINED TO THE ADJACENT FITTING UNLESS OTHERWISE NOTED.
- CUTTING AND PLUGGING OF EXISTING MAINS SHALL BE ACCOMPLISHED BY MECHANICALLY RESTRAINING THE PLUG OR CAP. SUFFICIENT LENGTH OF PIPE SHALL BE PROVIDED TO INSURE THE STABILITY OF THE INSTALLATION.
- STATIONING SHOWN IS ALONG THE BASELINE OF SURVEY. GRADING SHOWN IS ALONG THE PROPOSED PIPE ALIGNMENT.
- EXACT LOCATIONS OF SERVICES TO BE DETERMINED IN THE FIELD.
- FOR REQUIREMENTS FOR MECHANICAL THRUST RESTRAINT, SEE STANDARD DETAIL GS 2.0
- THERE MAY BE OTHER EXISTING UTILITIES IN THE AREA WHICH ARE NOT SHOWN ON THE PLANS, DUE TO FAILURE OF THESE UTILITIES TO RESPOND TO OUR REQUEST FOR INFORMATION.
- IF EVIDENCE OF POTENTIAL CONTAMINATION IS DETECTED DURING EXCAVATION, STOP EXCAVATION WORK AND NOTIFY WASH HAZARDOUS MATERIALS MANAGEMENT SECTION AT (786) 552-8400 AND THE CONSTRUCTION CONTRACTS MANAGEMENT DIVISION AT (786) 268-5191. EVIDENCE OF POTENTIAL CONTAMINATION MAY INCLUDE ANY OF THE FOLLOWING: 1. ODOR 2. SOLID WASTE DEBRIS 3. SHEEN ON THE GROUNDWATER 4. STAINED OR SATURATED SOIL (SOIL THAT CONTAINS PRODUCT THAT DRAINS WHEN IT IS HANDLED OR CREATES STREAKS ON EXCAVATION TOOLS) OR 5. FREE FLOATING PRODUCT ON THE GROUNDWATER (OIL, DIESEL, GASOLINE, ETC.). MATERIAL THAT HAS ODOR, IS STAINED OR IS SATURATED MUST BE SEGREGATED ON AN IMPERMEABLE SURFACE FOR APPROPRIATE FUTURE DISPOSAL.
- ALL PIPE AND FITTINGS INSTALLED UNDER THIS PROJECT MUST BE COLOR CODED WITH BLUE PAINT AS STATED IN THE FLORIDA ADMINISTRATIVE CODE, SUBPARAGRAPH 62-555.320(21)(B)3 AND AS REQUIRED BY THE FLORIDA DEPARTMENT OF ENVIRONMENTAL PROTECTION. IF PAINT IS APPLIED DURING INSTALLATION OF THE PIPE, THE PAINT SHALL BE APPLIED IN A CONTINUOUS LINE THAT RUNS PARALLEL TO THE AXIS OF THE PIPE AND THAT IS LOCATED ON THE TOP OF THE PIPE. FOR PIPES WITH AN INTERNAL DIAMETER OF 24-INCHES OR GREATER, PAINT SHALL BE APPLIED IN CONTINUOUS LINES ALONG EACH SIDE OF THE PIPE AS WELL AS ALONG THE TOP OF THE PIPE.
- USE CAUTION WHEN EXCAVATING AROUND UTILITIES PER SPECIFICATION SECTION 6.00.3
- PAVEMENT RESTORATION TO BE DONE IN ACCORDANCE WITH CITY OF MIAMI PUBLIC WORKS DEPARTMENT AND MIAMI-DADE COUNTY PUBLIC WORKS DEPARTMENT REQUIREMENTS UNLESS OTHERWISE NOTED.
- THE ENGINEER-OF-RECORD IS IN RESPONSIBLE CHARGE FOR THE DESIGN PART OF THIS PROJECT ONLY. THE DEPARTMENT, THROUGH THE CONSTRUCTION CONTRACTS MANAGEMENT DIVISION, WILL ASSIGN A FLORIDA LICENSED PROFESSIONAL ENGINEER TO TAKE RESPONSIBLE CHARGE OF INSPECTING THE CONSTRUCTION OF THIS PROJECT AND TO DETERMINE, IN GENERAL, IF THE CONSTRUCTION PROCEEDS IN COMPLIANCE WITH THE CONSTRUCTION PERMITS AND TO SUBMIT COMPLETE RECORD DRAWINGS AND CERTIFICATION OF CONSTRUCTION COMPLETION TO THE PERMITTING AGENCIES, AND TO OBTAIN WRITTEN APPROVAL OR CLEARANCE BEFORE PLACING THE MAINS IN SERVICE.
- LOCATION OF EXISTING FACILITIES AS SHOWN ON CONSTRUCTION DRAWINGS ARE FROM AVAILABLE RECORDS. THE ENGINEER ASSUMES NO RESPONSIBILITY OF THE FACILITIES SHOWN OR NOT SHOWN. CONTRACTOR IS TO FIELD VERIFY THE ELEVATION, TYPE OF PIPE AND LOCATION OF EXISTING FACILITIES PRIOR TO CONSTRUCTION. IF AN EXISTING FACILITY IS FOUND TO BE IN CONFLICT WITH THE PROPOSED CONSTRUCTION UPON EXCAVATION, THE CONTRACTOR SHALL IMMEDIATELY NOTIFY THE DESIGN ENGINEER/ENGINEER-OF-RECORD THROUGH THE ASSIGNED MDWASD CONSTRUCTION PROJECT MANAGER SO THAT APPROPRIATE MEASURES CAN BE TAKEN TO RESOLVE SAID CONFLICT. CONTRACTOR TO NOTIFY SUNSHINE STATE ONE CALL OF FLORIDA, INC. BY CALLING 811 AT LEAST 48 HOURS PRIOR TO EXCAVATING.
- MILLING AND RESURFACING PAVEMENT RESTORATION WILL BE AS SHOWN ON PLANS.
- IN AREAS WHERE POLLUTED GROUND WATER WILL OR MAY BE DRAWN INTO THE DEWATERING SYSTEM AND THE MDWASD HAS GRANTED PERMISSION TO INSTALL THE SYSTEM COMPONENTS VIA THE "ALTERNATE METHOD OF CONSTRUCTION", I.E. IN THE WET, AND THE CONTRACTOR ELECTS TO PERFORM DEWATERING AS PART OF THE WORK, THE CONTRACTOR SHALL BE FULLY RESPONSIBLE TO PROVIDE RELATED PROFESSIONAL SERVICES, PREPARE APPLICATION DOCUMENTS, SUBMIT AND OBTAIN ANY AND ALL REQUIRED DEWATERING/CONTAMINATION PERMIT APPROVALS (INCLUDING ANY ANCILLARY PERMITS THAT MAY BE REQUIRED, I.E. FROM R.E.R. WATER CONTROL OR POLLUTION CONTROL) PRIOR TO COMMENCING THE WORK AND AT NO ADDITIONAL CONTRACT TIME OR COST TO THE DEPARTMENT.
- THE CONTRACTOR IS RESPONSIBLE FOR IMPLEMENTATION AND MAINTENANCE OF EROSION CONTROL MEASURES CONTAINED WITHIN THE CONTRACT SPECIFICATIONS OR AS REQUIRED BY THE MUNICIPALITY OR ANY OTHER REGULATORY AUTHORITY. THE CONTRACTOR SHALL ALSO PROVIDE ANY ADDITIONAL EROSION CONTROL MEASURES (E.G. HYDROSEEDING MULCHING OF STRAW, SAND BAGGING, DIVERSION DITCHES, ETC.) DICTATED BY FIELD CONDITIONS TO PREVENT EROSION OR THE INTRUSION OF DIRT, MUD, OR DEBRIS INTO EXISTING PUBLIC STREETS, WATERWAYS, OR ONTO ADJACENT PROPERTIES DURING ANY PHASE OF CONSTRUCTION OPERATIONS.
- THE CONTRACTOR SHALL BE RESPONSIBLE FOR OBTAINING A FLORIDA DEPARTMENT OF ENVIRONMENTAL PROTECTION NPDES GENERIC PERMIT FOR STORMWATER DISCHARGE FROM LARGE AND SMALL CONSTRUCTION ACTIVITIES PERMIT (GCP) AND A NOTICE OF INTENT (NOI) TO USE SAID GENERIC PERMIT AS PROVIDED IN SUBSECTION 62-621.300(4), F.A.C. PURSUANT TO THE STATE'S FEDERALLY APPROVED NATIONAL POLLUTANT DISCHARGE ELIMINATION SYSTEM STORMWATER REGULATORY PROGRAM (NPDES). THE CONTRACTOR SHALL BE FULLY RESPONSIBLE TO PROVIDE RELATED PROFESSIONAL SERVICES, PREPARE APPLICATION DOCUMENTS AND OBTAIN ALL REQUIRED APPROVALS PRIOR TO COMMENCEMENT OF THE WORK AND AT NO ADDITIONAL CONTRACT TIME OR COST TO THE DEPARTMENT.
- IF EXISTING SERVICE LINES ARE GALVANIZED PIPE, REPLACE WITH 1" COPPER SERVICE WITH DIELECTRIC ADAPTERS.
- NEW SERVICE CONNECTIONS SHALL BE PROVIDED.
- PROJECT SPECIFICATIONS SHALL CONFORM TO THE MD-WASD DESIGN AND CONSTRUCTION STANDARD SPECIFICATIONS AND DETAILS.
- ALL EXISTING WATER METERS AND WATER METER BOXES SHALL BE REPLACED WITH METERS APPROVED BY MIAMI-DADE WATER AND SEWER DEPARTMENT.
- THE EXISTING 4" CAST IRON WATER MAIN ALONG THE NORTH SIDE OF NW 32ND STREET BETWEEN NW 23RD AVENUE AND NW 22 AVENUE SHALL BE REMOVED FROM SERVICE AND ABANDONED IN-PLACE FOLLOWING ACCEPTANCE OF THE PROPOSED 12" DUCTILE IRON WATER MAIN AND APPURTENANCES BY THE OWNER.

THE FOLLOWING ARE REQUIREMENTS PER DEPARTMENT OF HEALTH WATER MAIN HORIZONTAL SEPARATIONS

SEPARATIONS SHALL BE MEASURED OUTSIDE EDGE TO OUTSIDE EDGE.

BETWEEN WATER MAINS AND, STORM SEWERS, STORMWATER FORCE MAINS, OR RECLAIMED WATER LINES, SHALL BE 3 FT. MINIMUM.

BETWEEN WATER MAINS AND VACUUM TYPE SEWER PREFERABLY 10 FT. AND AT LEAST 3 FT. MINIMUM.

BETWEEN GAS MAINS, 3 TO 5 FEET SEPARATION.

GRAVITY OR PRESSURE SANITARY SEWERS, WASTEWATER FORCE MAINS OR RECLAIMED WATER PREFERABLY 10 FT. AND AT LEAST 6 FT.*

*GRAVITY SEWER ONLY MAY BE REDUCED TO 3 FT. WHERE BOTTOM OF WATER MAIN IS AT LEAST 6 INCHES ABOVE TOP OF SEWER.

10 FT. TO ANY PART OF ON-SITE SEWER TREATMENT OR DISPOSAL SYSTEM.

WATER MAIN VERTICAL SEPARATIONS

SEPARATIONS BETWEEN WATER MAINS AND GRAVITY SEWER, VACUUM TYPE SEWER OR STORM SEWERS, TO BE PREFERABLY 12 INCHES OR AT LEAST 6 INCHES ABOVE OR AT LEAST 12 INCHES BELOW.

PRESSURE SANITARY SEWER, WASTEWATER OR STORM WATER FORCE MAIN, OR RECLAIMED WATER, AT LEAST 12 INCHES ABOVE OR BELOW.*

SEPARATION BETWEEN GAS MAINS TO BE A 12-INCH MINIMUM VERTICAL SEPARATION.

* CENTER 1-FULL LENGTH OF WATER MAIN PIPE AT CROSSINGS; ALTERNATIVELY ARRANGE PIPES SO JOINTS ARE AT LEAST 3 FEET FROM JOINTS IN VACUUM, STORM OR STORM FORCE MAINS; AT LEAST 6 FEET FROM JOINTS IN GRAVITY OR PRESSURE SEWERS, WASTEWATER FORCE MAINS OR RECLAIMED WATER.

NOTE: IN ALL CASES, INCLUDING EXCEPTIONS, REFER TO F.A.C. 62-555.314

MIAMI-DADE WATER AND SEWER DEPARTMENT DESIGN & CONSTRUCTION STANDARD DETAILS

FOR	SEE DETAIL	SHEET
TYPICAL TIE-ROD DETAILS	GS 1.0	1 OF 1
WATER AND GRAVITY SEWER MAIN CROSSINGS	GS 1.5	1 OF 1
TYPICAL TRENCH BACKFILL FOR D.I. WATER AND FORCE MAINS	GS 1.9	1 OF 1
WATER AND SEWER MECHANICAL THRUST RESTRAINT	GS 2.0	1 OF 1
TYPICAL FLUSHING VALVE OUTLET	WS 1.61	1 OF 1
No. 3 C.I. VALVE BOX AND LID	WS 3.11	1 & 2 OF 2
PAVEMENT RESTORATION TYPE I	A 1.0	1 OF 1
PAVEMENT RESTORATION TYPE V	A 1.1	1 OF 1
POLYETHYLENE ENCASUREMENT FOR DUCTILE IRON PIPE	A 9.0	1 OF 1
ABBREVIATIONS FOR DEPARTMENT'S PROJECTS	A 10.0	1, 2 & 3 OF 3
TYPICAL FIRE HYDRANT INSTALLATION WITH GUARD POSTS	WS 4.50	1 & 2 OF 2
No. 2 C.I. VALVE BOX AND LID	WS 3.10	1 OF 1

NOTES:

- THE ABOVE LIST SHALL NOT BE CONSIDERED AS NECESSARILY COMPLETE, NOR SHALL THE STANDARD DETAILS WHICH MAY BE INCLUDED ELSEWHERE HEREIN BE CONSIDERED AS FORMING A COMPLETE LISTING OF ALL STANDARD DETAILS WHICH MAY APPLY TO THIS PROJECT.
- ALL STANDARD DETAILS ARE INCORPORATED IN THE ABOVE LIST BY REFERENCE AND ALL WORK SHALL BE PERFORMED IN ACCORDANCE WITH ALL APPLICABLE MDWASD STANDARD DETAILS.
- FINAL PAVEMENT RESTORATION ON NW 32ND STREET SHALL BE DONE WITH THE GUIDANCE OF THE NW 32ND STREET IMPROVEMENTS PROJECT J.P.A. NO. B-30723



DESIGN TICKET #057605161
DATE: 02/26/2016

LEGEND

- W(B) - - - - - Exist. Water Main
- - - - -S.S. - - - - - Exist. Storm Sewer
- S(B) - - - - - Exist. Sanitary Sewer
- - - - -F.M. - - - - - Exist. Force Main
- G(B) - - - - - Exist. Gas
- - - - -CL - - - - - Center line
- - - - -BL - - - - - Base line
- - - - -CL&BL - - - - - Center line and Base line
- - - - -M - - - - - Monument line
- - - - -S - - - - - Section line
- - - - -R/W - - - - - Right of way line
- - - - -P - - - - - Property line
- - - - -TEL - - - - - Exist. Telephone
- - - - -OE - - - - - Exist. Electric underground
- - - - -UC - - - - - Exist. Cable underground
- - - - -D.I. - - - - - Exist. Traffic loop
- - - - -D.I. - - - - - Ductile Iron
- - - - -R.J. - - - - - Restrained Joint
- - - - -G.W. - - - - - Exist. Guy Wire
- - - - -S.L.P. - - - - - Exist. Street Light Pole
- - - - -U.C. - - - - - Exist. Utility Conc. Pole
- - - - -U.P. - - - - - Exist. Utility Pole
- - - - -F.L. - - - - - Exist. Flood Light
- - - - -T.L.P. - - - - - Exist. Traffic Light Pole
- - - - -P.C.S.L. - - - - - Exist. Pedestrian Crossing Light
- - - - -E.B. - - - - - Exist. Electric Box
- - - - -S.L.B. - - - - - Exist. Street Light Box
- - - - -T.P.B. - - - - - Exist. Telephone Box
- - - - -T.S.B. - - - - - Exist. Traffic Signal Box
- - - - -C.T.V.B. - - - - - Exist. Cable TV Box
- - - - -C.B. - - - - - Exist. C.B.
- - - - -E.MH - - - - - Exist. Electric MH
- - - - -S.MH - - - - - Exist. Storm MH
- - - - -S.MH - - - - - Exist. Sanitary MH
- - - - -T.MH - - - - - Exist. Telephone MH
- - - - -W.MH - - - - - Exist. Water MH
- - - - -W. - - - - - Exist. Well
- - - - -S. - - - - - Exist. Sprinkler
- - - - -F.H. - - - - - Exist. Fire Hydrant
- - - - -V. - - - - - Exist. Valve
- - - - -P.V. - - - - - Prop. Valve
- - - - -D.P. - - - - - Prop. Drainage Pipe (RCP)
- - - - -C.B. - - - - - Core Boring
- - - - -S. - - - - - Exist. Sign
- - - - -S.W.M. - - - - - Exist. Single Water Meter
- - - - -P.S.W.M. - - - - - Prop. Single Water Meter
- - - - -D.W.M. - - - - - Prop. Double Water Meter
- - - - -L.M.R. - - - - - Limits of milling and resurfacing pavement restoration

THIS PROJECT MAY NOT BE PLACED INTO SERVICE UNTIL FIN. CLEARANCE IS OBTAINED FROM MIAMI-DADE COUNTY DEPARTMENT OF HEALTH

APPROVED
WATER SUPPLY ONLY
SPRINKLER ONLY
ENVIRONMENTAL PROTECTION
FLORIDA DEPT. OF HEALTH
MIAMI-DADE COUNTY
54844-147-D
NO. 12-28-17

MIAMI-DADE COUNTY
Delivering Excellence Every Day
WATER & SEWER DEPARTMENT
3071 SW 38TH AVENUE
MIAMI, FL 33146-1520
305-665-7471
www.miamidade.gov/water
UTILITY PIPELINE ENGINEERING & CONSTRUCTION DIVISION
3501 NW 46 STREET.
MIAMI, FL 33142
786-268-5310

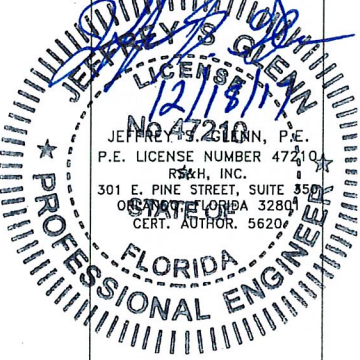
INSTALLATION OF 12-INCH D.I. WATER MAIN ALONG N.W. 32ND ST. FROM N.W. 23RD AVE TO N.W. 22ND AVE. PCTS No. 14924 ER No. W017041

REVISIONS

No.	DESCRIPTION	DATE	BY
1		01/00/2017	

APPROVALS

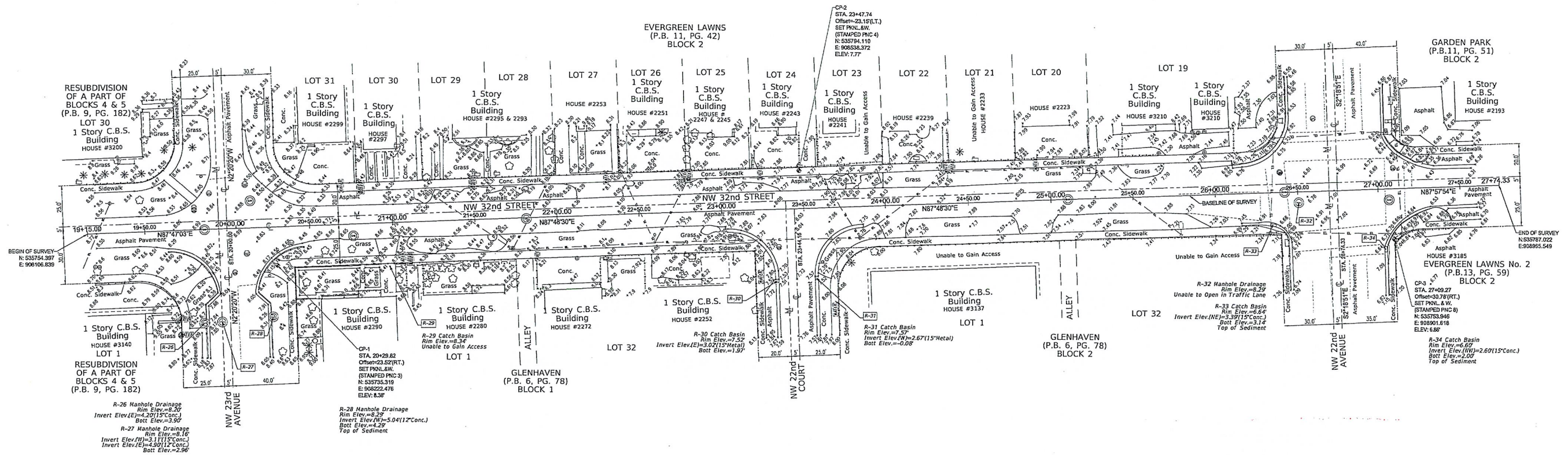
DESIGNED: LER	DRAWN: LER
SR. PROG. MGR.: JSG	
ENG. REVIEW: SLM	
CONST. REVIEW: SG	



MIAMI-DADE WATER AND SEWER DEPARTMENT
Date: 12-28-17 Contact: 14924
 APPROVED
 APPROVED SUBJECT TO NOTATIONS AND CORRECTIONS AS INDICATED.
 DISAPPROVED, REVISE AS INDICATED BY NOTATIONS AND CORRECTIONS AND RESUBMIT.
Checking of shop drawing submittals is limited to general design and material arrangements only. It is not intended to be a verification of the items or total design. Approval shall not relieve the Contractor of the responsibility for design, correct dimensions for proper fitting, capacity, performance, or other requirement of the Contract.
CHECKED: _____ REVIEWED: _____

FILE NAME: GNNTUW01.DGN
DATE: 10-3-2017 SCALE: N.T.S.
SHEET P-2 OF 6
DWG. No. W-22517-D

SKETCH OF TOPOGRAPHIC SURVEY



LEGEND:

- ⊙ SEWER MANHOLE
- ⊙ STORM MANHOLE
- ⊙ TELEPHONE MANHOLE
- ⊙ WATER VALVE
- ⊙ SEWER VALVE
- ⊙ WATER METER
- ⊙ CENTER LINE
- ⊙ CATCH BASIN
- ⊙ FIRE HYDRANT
- ⊙ POWER POLE (CONCRETE)
- ⊙ SIGN
- ⊙ WRING PULL BOX
- ⊙ SERVICE CABINET
- ⊙ GUARD POST
- ⊙ MONUMENT LINE
- ⊙ TREE
- ⊙ TREE PALM
- ⊙ ORNAMENTAL PLANT
- ⊙ GUY ANCHOR
- ⊙ LIGHT POLE
- ⊙ MAIL BOX

ABBREVIATIONS:

- C.B.S. = DENOTES CONCRETE BLOCK STUCCO
- FD. = DENOTES FOUND
- I.P. = DENOTES IRON PIPE
- P.B. = DENOTES PLAT BOOK
- PG. = DENOTES PAGE
- T.B.M. = DENOTES TEMPORARY BENCH MARK
- N & D = DENOTES NAIL AND DISC
- D.H. = DENOTES DRILL HOLE
- R.W. = DENOTES RIGHT-OF-WAY
- PL. = DENOTES PLANTER OR LANDSCAPED AREA
- ELEV. = DENOTES ELEVATION
- PKLAW. = DENOTES PKNAIL & WASHER
- Conc. = DENOTES CONCRETE
- Ch.I. = DENOTES CHAIN LINK FENCE
- CP. = DENOTES CONTROL POINT
- N.G.V.D. = DENOTES NATIONAL GEODETIC VERTICAL DATUM
- Bot. = DENOTES BOTTOM
- RT. = DENOTES RIGHT
- LT. = DENOTES LEFT
- STA. = DENOTES STATION
- PVC. = DENOTES POLYVINYL CHLORIDE

LINES TYPE:

- EL — OVERHEAD ELECTRIC LINE
- x - x - x - FENCE
- - - - - LOT LINE
- - - - - EASEMENT
- - - - - CENTER LINE
- - - - - MONUMENT LINE
- 2 CONCRETE CURBS & GUTTER
- 2 CONCRETE VALLEY GUTTER
- - - - - RIGHT OF WAY LINE

**MIAMI-DADE
WATER AND SEWER DEPARTMENT**

Date: 12-28-17 Contact: 10924

APPROVED

APPROVED SUBJECT TO NOTATIONS AND CORRECTIONS AS INDICATED.

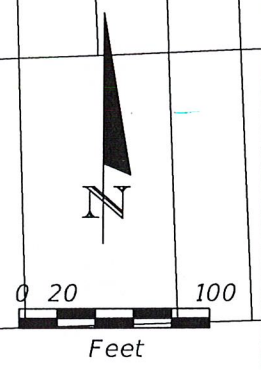
DISAPPROVED, REVISE AS INDICATED BY NOTATIONS AND CORRECTIONS, AND REUBMIT.

Checking of shop drawing submittals is limited to general design and general arrangements only. It is not intended to be a verification of the items or data required. Approval shall not relieve the Contractor of their responsibility for design, correct dimensions or proper fitting, necessity for proper materials, and other requirements of the Contract.

CHECKED: _____ REVIEWED: [Signature]

MANUEL G. VERA & ASSOCIATES, INC. ENGINEERS • SURVEYORS • MAPPERS 13900 SW 47th Street Miami, FL 33175 • Phone (305)221-6210 P.O. BOX 630376 • Miami, FL 33266 • Fax (305)221-1295 www.mgvera.com • e-mail: sruin@mgvera.com	DATE:	REVISIONS:			
	DATE: 3-30-2018	DRAWN BY: JCF	SCALE: 1"=30'	F.B. - PG. 818, 896, 906	JOB No. 16-529

LB 2439



INSTALLATION OF 12-INCH D.I.
 WATER MAIN ALONG N.W. 32 ST.
 FROM N.W. 23 AVE. N.W. 22 AVE.
 PCTS. No. 14924 ER No. W017041

GENERAL PLAN

REVISIONS

No.	DESCRIPTION	DATE	BY
1		MM/DD/2017	

APPROVALS

DESIGNED: LER	DRAWN: LER
SR. PROC. MGR.: JSG	
ENG. REVIEW: SLM	
CONST. REVIEW: SG	

MIAMI-DADE WATER AND SEWER DEPARTMENT

Date: 12-28-17 Contact: 14924

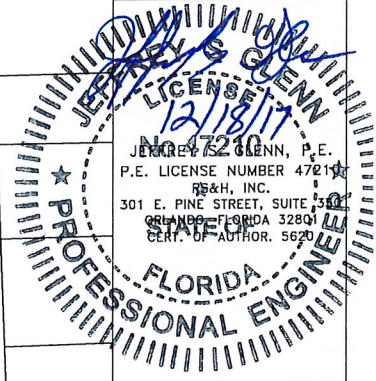
APPROVED

APPROVED SUBJECT TO NOTATIONS AND CORRECTIONS AS INDICATED.

DISAPPROVED REVISE AS INDICATED BY NOTATIONS AND CORRECTIONS AND RESUBMIT.

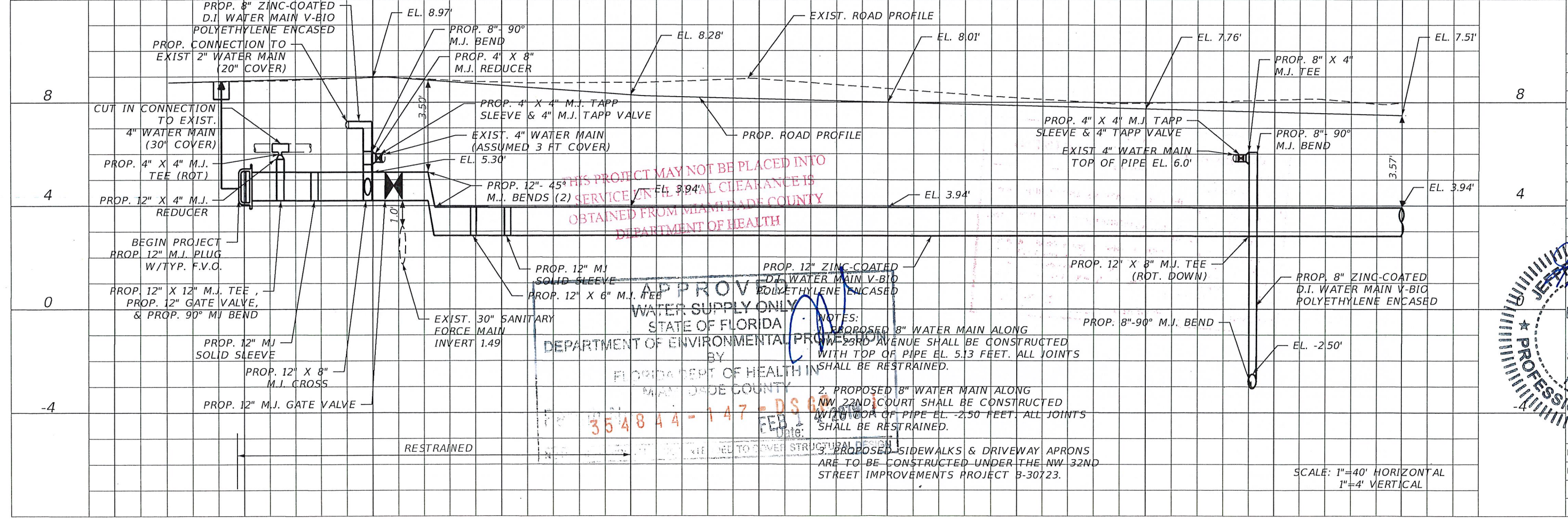
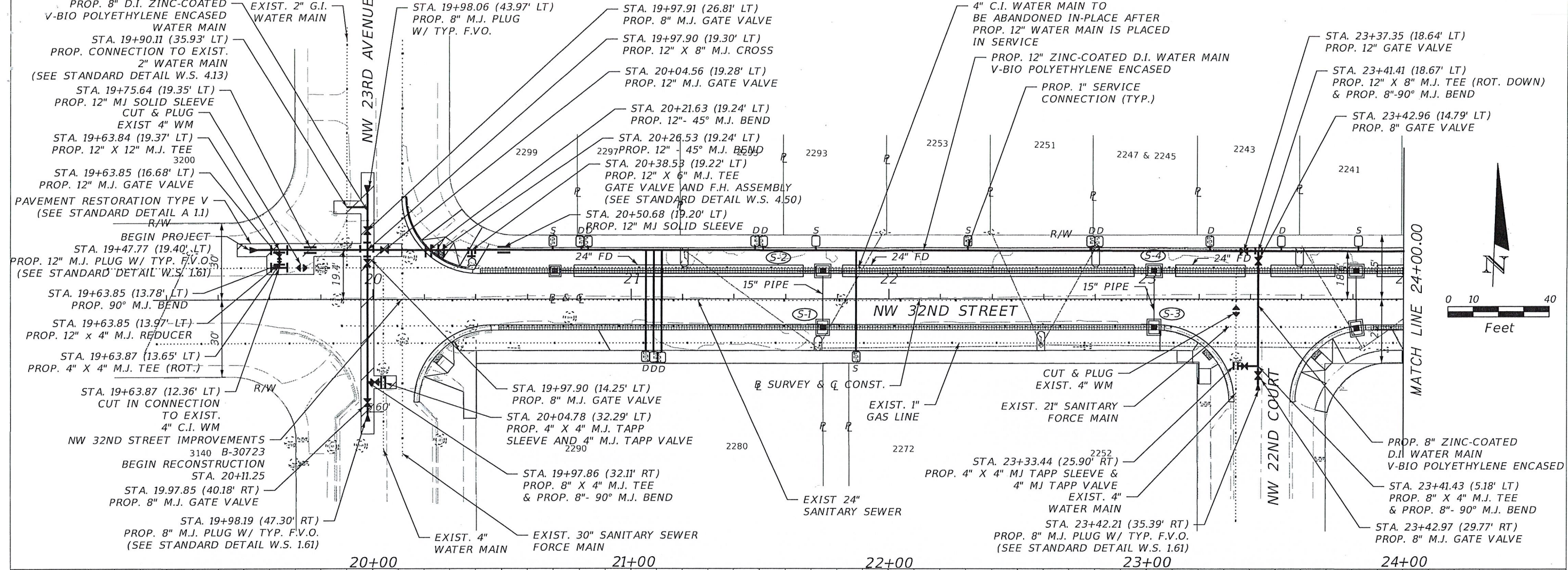
Checking of shop drawing submittals is limited to general design and overall arrangement. It does not constitute an endorsement of the items or items listed herein. The contractor is responsible for the design, construction, and performance of the work. The contractor shall be responsible for obtaining all necessary permits and approvals from the appropriate authorities.

CHECKED: _____ REVIEWED: 44



INSTALLATION OF 12-INCH D.I. WATER MAIN ALONG N.W. 32ND ST. FROM N.W. 23RD AVE. TO N.W. 22ND AVE. PCTS. No. 14924 ER No. W017041

PLAN AND PROFILE



THIS PROJECT MAY NOT BE PLACED INTO SERVICE UNLESS CLEARANCE IS OBTAINED FROM MIAMI-DADE COUNTY DEPARTMENT OF HEALTH

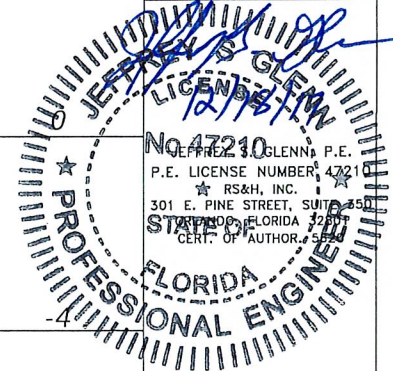
APPROVED

STATE OF FLORIDA
 DEPARTMENT OF ENVIRONMENTAL PROTECTION
 WATER SUPPLY ONLY
 BY: [Signature]
 MIAMI-DADE COUNTY

NOTES:
 1. PROPOSED 8" WATER MAIN ALONG NW 23RD AVENUE SHALL BE CONSTRUCTED WITH TOP OF PIPE EL. 5.13 FEET. ALL JOINTS SHALL BE RESTRAINED.
 2. PROPOSED 8" WATER MAIN ALONG NW 22ND COURT SHALL BE CONSTRUCTED WITH TOP OF PIPE EL. -2.50 FEET. ALL JOINTS SHALL BE RESTRAINED.
 3. PROPOSED SIDEWALKS & DRIVEWAY APRONS ARE TO BE CONSTRUCTED UNDER THE NW 32ND STREET IMPROVEMENTS PROJECT B-30723.

REVISIONS			
No.	DESCRIPTION	DATE	BY
1		MM/DD/2017	

APPROVALS	
DESIGNED: LER	DRAWN: LER
SR. PROG. MGR.: JSG	
ENG. REVIEW: SLM	
CONST. REVIEW: SC	



STA. 24+40.97 (18.49' LT)
PROP 12" X 6" M.J. TEE
GATE VALVE AND F.H. ASSEMBLY
(SEE STANDARD DETAIL W.S. 4.50)

4" C.I. WATER MAIN
TO BE ABANDONED
IN PLACE AFTER PROP. 12"
WATER MAIN IS PLACED IN SERVICE

PROP. 12" ZINC-COATED D.I.
WATER MAIN V-BIO POLYETHYLENE
ENCASED

PROP. 1" SERVICE
CONNECTION (TYP.)

STA. 25+02.94 (18.37' LT)
PROP. 12" MJ SOLID SLEEVE

STA. 25+10.47 (18.36' LT)
PROP. 12"-90° M.J. BEND

EXIST 12" D.I. WM

CUT & PLUG
EXIST. 4" WM

R/W

26

27

28

29

30

31

32

33

34

35

36

37

38

39

40

41

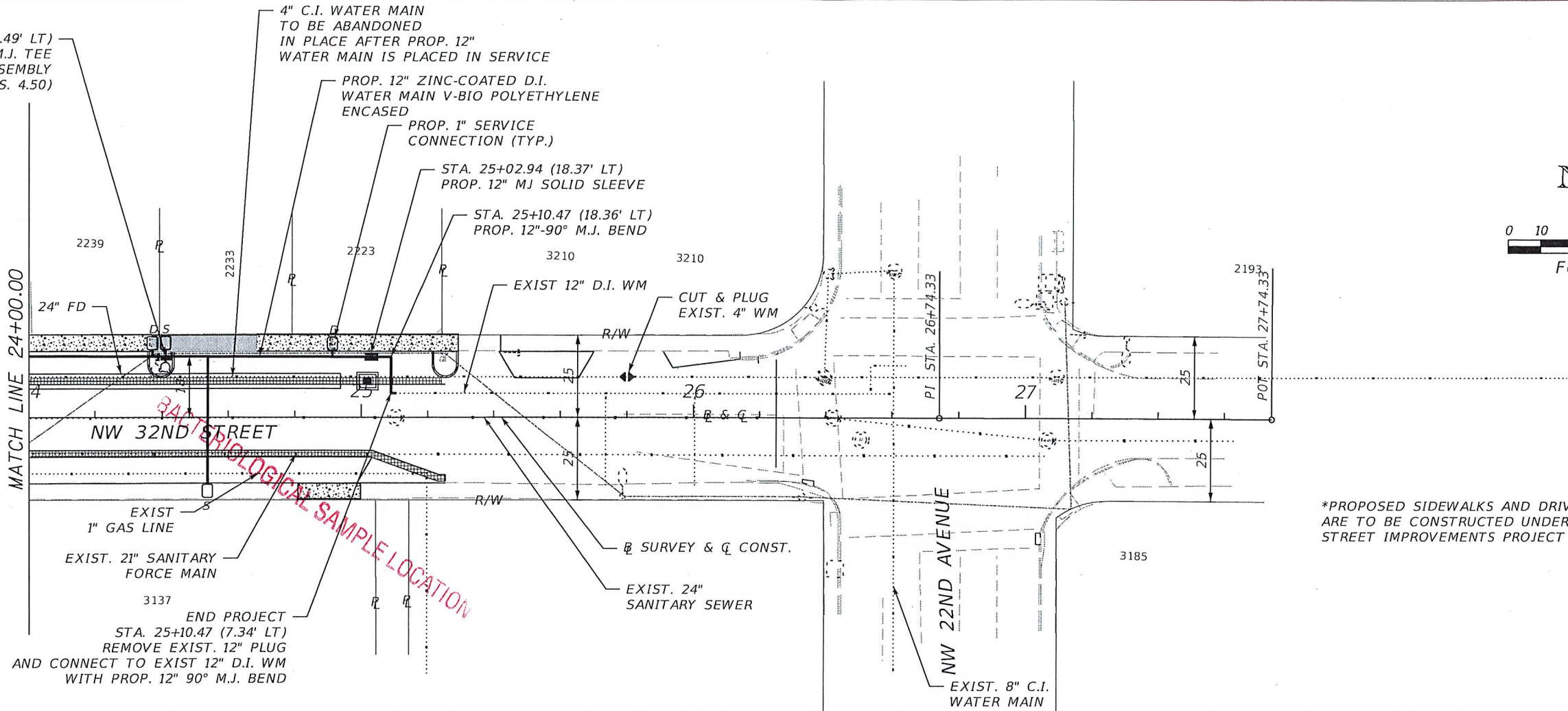
42

43

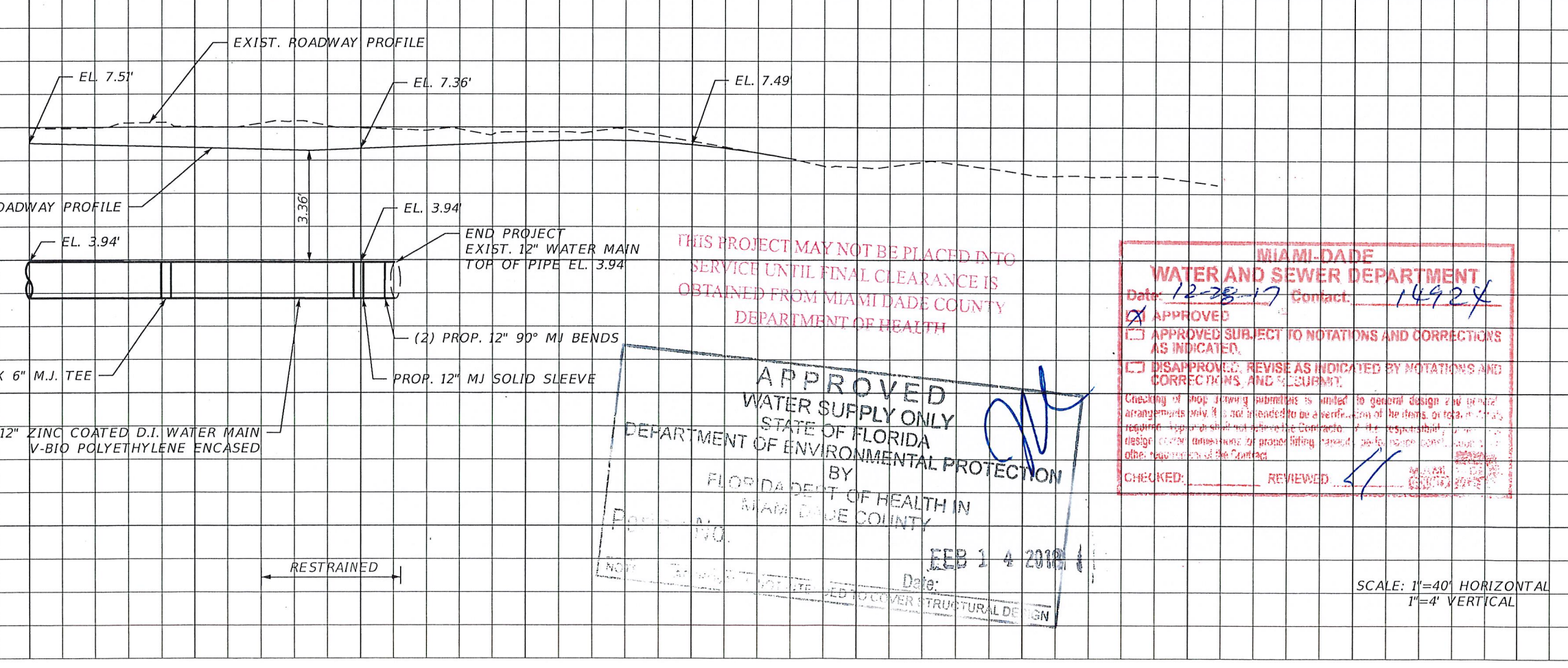
44

45

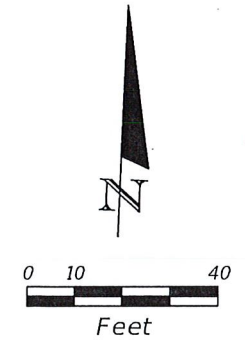
46



MATCH LINE 24+00.00 25+00 26+00 27+00



RESTRAINED



MIAMI-DADE COUNTY
Delivering Excellence Every Day
WATER & SEWER DEPARTMENT
 3071 SW 38TH AVENUE
 MIAMI, FL 33146-1520
 305-665-7471
 www.miamidade.gov/water
 UTILITY PIPELINE
 ENGINEERING &
 CONSTRUCTION
 DIVISION
 3501 NW 46 STREET,
 MIAMI, FL 33142
 786-268-5310

INSTALLATION OF 12-INCH D.I. WATER MAIN ALONG N.W. 32ND ST. FROM N.W. 23RD AVE. TO N.W. 22ND AVE. PCTS. No. 14924 ER No. W017041

PLAN AND PROFILE

*PROPOSED SIDEWALKS AND DRIVEWAY APRONS ARE TO BE CONSTRUCTED UNDER THE NW 32ND STREET IMPROVEMENTS PROJECT B-30723

REVISIONS

No.	DESCRIPTION	DATE	BY
8		MM/00/2017	

APPROVALS

DESIGNED: LER	DRAWN: LER
SR. PROC. MGR.: JSG	
ENG. REVIEW: SLM	
CONST. REVIEW: SG	

MIAMI-DADE WATER AND SEWER DEPARTMENT
 Date: 12-28-17 Contact: 14924
 APPROVED
 APPROVED SUBJECT TO NOTATIONS AND CORRECTIONS AS INDICATED.
 DISAPPROVED, REVISE AS INDICATED BY NOTATIONS AND CORRECTIONS, AND RESUBMIT.

Checking of shop drawing submittals is limited to general design and proper arrangements only. It is not intended to be a verification of the items or details, or to guarantee, or to assume responsibility for, the design, construction or proper fitting, erection, performance, or other responsibilities of the Contractor.

CHECKED: _____ REVIEWED: _____

THIS PROJECT MAY NOT BE PLACED INTO SERVICE UNTIL FINAL CLEARANCE IS OBTAINED FROM MIAMI DADE COUNTY DEPARTMENT OF HEALTH

APPROVED
 WATER SUPPLY ONLY
 STATE OF FLORIDA
 DEPARTMENT OF ENVIRONMENTAL PROTECTION
 BY _____
 FLORIDA DEPT. OF HEALTH IN MIAMI DADE COUNTY
 DATE: FEB 14 2018

JEFFREY S. GLENN
 P.E. LICENSE NO. 47240
 RS&H, INC.
 301 E. PINE STREET, SUITE 350
 ORLANDO, FLORIDA 32801
 813-963-1117

PROFESSIONAL ENGINEER

FILE NAME: PLANUW02.DGN
 DATE: 12-1-2017 SCALE: 1"=40'
 SHEET P-6 OF 6
 DWG. No. W-22521-D

SCALE: 1"=40' HORIZONTAL
 1"=4' VERTICAL