

MIAMI-DADE WATER AND SEWER DEPARTMENT
 ENGINEERING AND DESIGN DIVISION
 3071 S.W. 38th AVENUE MIAMI, FLORIDA 33146-1520

INSTALLATION 8-INCH D.I. WATER MAIN
 IN SW 64th COURT FROM SW 8th ST. TO SW 6th ST.
 PCTS No.14706 ER No. W-017009
 CITY OF MIAMI J.P.A. PROJECT No.B-30972

RECEIVED
 PERMITS OFFICE
 MAY 30 2017

DEPT. OF TRANSPORTATION
 MIAMI, FLORIDA

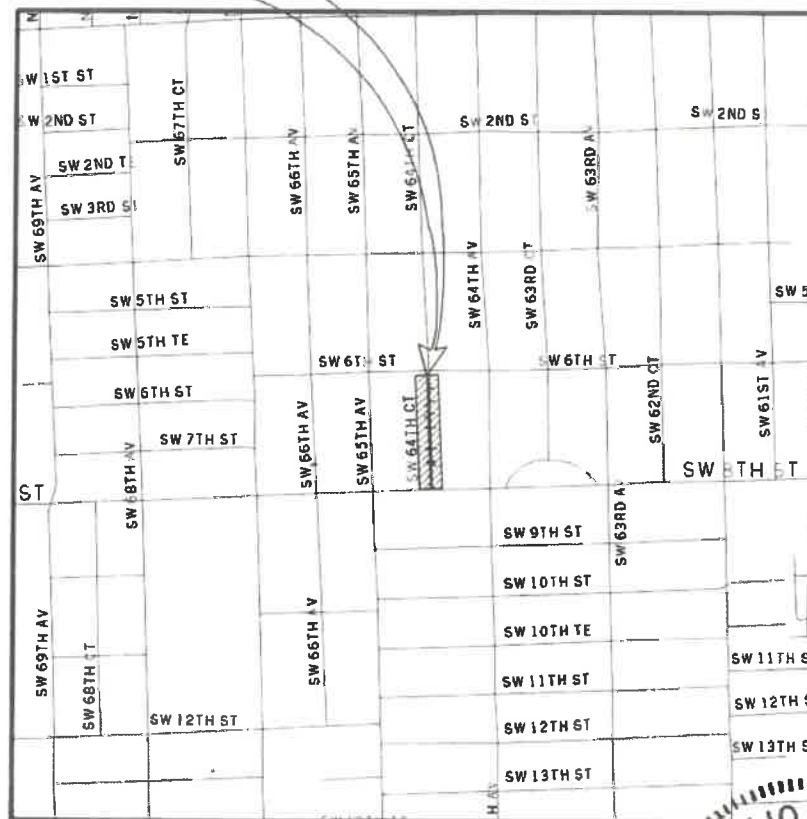
2017 H 690 138

WORK WITHIN THE
F.D.O.T.
 RIGHT OF WAY SHALL
 CONFORM TO CURRENT
 F.D.O.T. STANDARDS
 AND SPECIFICATIONS

CITY OF MIAMI
 FIRE PREV. BUREAU
 APPROVED

[Signature]
 SIGNATURE

PROJECT
 LOCATION



LOCATION PLAN
 CITY/COUNTY
 A PORTION OF SEC. 01 - TWP. 54. - RGE. 40 E.
 N.T.S.

SHEET INDEX	
WM-01	KEY SHEET
WM-02	GENERAL NOTES AND LEGEND
WM-03	PROP. 8" D.I. W.M. GENERAL PLAN
04 THRU 07	TOPOGRAPHIC SURVEY
WM-08	PROP. 8" D.I. W.M. PLAN & PROFILE
WM-09	PROP. 8" D.I. W.M. PLAN & PROFILE
WM-10	PROP. 8" D.I. W.M. PLAN & PROFILE
WM-11	PROP. FIRE HYDRANT PLAN & PROFILE
WM-12	TRAFFIC CONTROL PLAN - GENERAL NOTES
WM-13	TRAFFIC CONTROL PLAN - MOT
WM-14	TRAFFIC CONTROL PLAN - DETOUR



CITY OF MIAMI
 CAPITAL IMPROVEMENTS PROGRAM
 444 S.W. 2ND AVENUE, 8TH FLOOR
 MIAMI, FLORIDA 33130
 (305) 416-1213 FAX (305) 416-1253

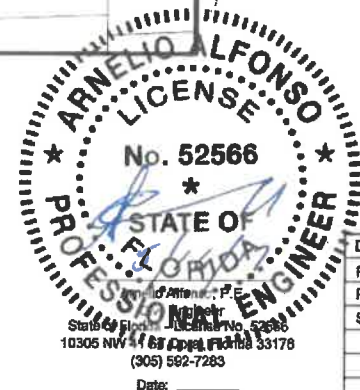
MIAMI-DADE
 WATER AND SEWER DEPARTMENT

Date: 5/15/17 Contract No.: 17009

APPROVED
 APPROVED SUBJECT TO NOTATIONS AND CORRECTIONS AS INDICATED.
 DISAPPROVED, REVISE AS INDICATED BY NOTATIONS AND CORRECTIONS, AND RESUBMIT.

Checking of shop drawing contracts is limited to general clarity and general arrangements only. It is not intended to constitute approval of the design, or to shift contractual responsibility for details of design to the contractor. The contractor shall be responsible for providing complete and accurate information for the project. The contractor shall be responsible for providing complete and accurate information for the project.

CREATED BY: _____ REVIEWED: *[Signature]*



CITY OF MIAMI PROJECT MANAGER: IVELISSE RODRIGUEZ
 M-D WASH PROJECT MANAGER: BRIAN TRUJILLO, P.E.

DWG. HISTORY	DATE	BY	REV No.	DATE	DESCRIPTION	BY
REVIEW	02/22/2017	A.A.				
REVIEW	03/30/2017	A.A.				
SUBMITTAL	05/15/2017	A.A.				
APPROVED BY			APPROVED BY		PROJECT ER No. : W-017009	
CHIEF ENGINEER			SECTION HEAD		DESIGN MGR.	PCTS No.: 14706
DRAWN: N.P.			DATE: 05/15/17		SHEET	WM-01 OF WM-14
FILE NAME: KEYSUW01.DGN					DWG. No.	



GENERAL NOTES

- 1. THE FOLLOWING UTILITY COMPANIES SHOULD BE NOTIFIED 48 HOURS IN ADVANCE OF EXCAVATION IN AREA:
- FPL - FLORIDA CITY GAS
- AT&T/DISTRIBUTION - DADE COUNTY PUBLIC WORKS & TRAFFIC
- COMCAST - FLORIDA POWER & LIGHT TRANSMISSION
- MIAMI DADE WATER SEWER - ATLANTIC BROADBAND
2. ALL ELEVATIONS REFER TO NATIONAL GEODETIC VERTICAL DATUM, 1929 ADJUST.
3. VALVES AT INTERSECTIONS, BRANCH MAINS OR STOP OUTS SHALL BE RESTRAINED TO THE ADJACENT FITTING UNLESS OTHERWISE NOTED.
4. CUTTING AND PLUGGING OF EXISTING MAINS SHALL BE ACCOMPLISHED BY MECHANICALLY RESTRAINING THE PLUG OR CAP. SUFFICIENT LENGTH OF PIPE SHALL BE PROVIDED TO INSURE THE STABILITY OF THE INSTALLATION.
5. STATIONING SHOWN IS ALONG THE BASELINE OF SURVEY. GRADING SHOWN IS ALONG THE PROPOSED PIPE ALIGNMENT.
6. EXACT LOCATIONS OF SERVICES TO BE DETERMINED IN THE FIELD.
7. FOR REQUIREMENTS FOR MECHANICAL THRUST RESTRAINT, SEE STANDARD DETAIL GS 2.0
8. THERE MAY BE OTHER EXISTING UTILITIES IN THE AREA WHICH ARE NOT SHOWN ON THE PLANS, DUE TO FAILURE OF THESE UTILITIES TO RESPOND TO OUR REQUEST FOR INFORMATION.
9. IF EVIDENCE OF POTENTIAL CONTAMINATION IS DETECTED DURING EXCAVATION, STOP EXCAVATION WORK AND NOTIFY WASH HAZARDOUS MATERIALS MANAGEMENT SECTION AT (786) 552-8400 AND THE CONSTRUCTION CONTRACTS MANAGEMENT DIVISION AT (786) 268-5191. EVIDENCE OF POTENTIAL CONTAMINATION MAY INCLUDE ANY OF THE FOLLOWING: 1. ODOR 2. SOLID WASTE DEBRIS 3. SHEEN ON THE GROUNDWATER 4. STAINED OR SATURATED SOIL (SOIL THAT CONTAINS PRODUCT THAT DRAINS WHEN IT IS HANDLED OR CREATES STREAKS ON EXCAVATION TOOLS) OR 5. FREE FLOATING PRODUCT ON THE GROUNDWATER (OIL, DIESEL, GASOLINE, ETC.). MATERIAL THAT HAS ODOR, IS STAINED OR IS SATURATED MUST BE SEGREGATED ON AN IMPERMEABLE SURFACE FOR APPROPRIATE FUTURE DISPOSAL.
10. ALL PIPE AND FITTINGS INSTALLED UNDER THIS PROJECT MUST BE COLOR CODED WITH BLUE PAINT AS STATED IN THE FLORIDA ADMINISTRATIVE CODE, SUBPARAGRAPH 62-555.320(2)(X)(B)3 AND AS REQUIRED BY THE FLORIDA DEPARTMENT OF ENVIRONMENTAL PROTECTION. IF PAINT IS APPLIED DURING INSTALLATION OF THE PIPE, THE PAINT SHALL BE APPLIED IN A CONTINUOUS LINE THAT RUNS PARALLEL TO THE AXIS OF THE PIPE AND THAT IS LOCATED ON THE TOP OF THE PIPE. FOR PIPES WITH AN INTERNAL DIAMETER OF 24-INCHES OR GREATER, PAINT SHALL BE APPLIED IN CONTINUOUS LINES ALONG EACH SIDE OF THE PIPE AS WELL AS ALONG THE TOP OF THE PIPE.
11. USE CAUTION WHEN EXCAVATING AROUND UTILITIES PER SPECIFICATION SECTION 6.00.3
12. PAVEMENT RESTORATION TO BE DONE IN ACCORDANCE WITH CITY OF MIAMI PUBLIC WORKS DEPARTMENT REQUIREMENTS UNLESS OTHERWISE NOTED.
13. THE ENGINEER-OF-RECORD IS IN RESPONSIBLE CHARGE FOR THE DESIGN PART OF THIS PROJECT ONLY. THE DEPARTMENT, THROUGH THE CONSTRUCTION CONTRACTS MANAGEMENT DIVISION, WILL ASSIGN A FLORIDA LICENSED PROFESSIONAL ENGINEER TO TAKE RESPONSIBLE CHARGE OF INSPECTING THE CONSTRUCTION OF THIS PROJECT AND TO DETERMINE, IN GENERAL, IF THE CONSTRUCTION PROCEEDS IN COMPLIANCE WITH THE CONSTRUCTION PERMITS AND TO SUBMIT COMPLETE RECORD DRAWINGS AND CERTIFICATION OF CONSTRUCTION COMPLETION TO THE PERMITTING AGENCIES, AND TO OBTAIN WRITTEN APPROVAL OR CLEARANCE BEFORE PLACING THE MAINS IN SERVICE.
14. LOCATION OF EXISTING FACILITIES AS SHOWN ON CONSTRUCTION DRAWINGS ARE FROM AVAILABLE RECORDS. THE ENGINEER ASSUMES NO RESPONSIBILITY OF THE FACILITIES SHOWN OR NOT SHOWN. CONTRACTOR IS TO FIELD VERIFY THE ELEVATION, TYPE OF PIPE AND LOCATION OF EXISTING FACILITIES PRIOR TO CONSTRUCTION. IF AN EXISTING FACILITY IS FOUND TO BE IN CONFLICT WITH THE PROPOSED CONSTRUCTION UPON EXCAVATION, THE CONTRACTOR SHALL IMMEDIATELY NOTIFY THE DESIGN ENGINEER/ENGINEER-OF-RECORD THROUGH THE ASSIGNED MDWASD CONSTRUCTION PROJECT MANAGER SO THAT APPROPRIATE MEASURES CAN BE TAKEN TO RESOLVE SAID CONFLICT. CONTRACTOR TO NOTIFY SUNSHINE STATE ONE CALL OF FLORIDA, INC. BY CALLING 811 AT LEAST 48 HOURS PRIOR TO EXCAVATING.
15. MILLING AND RESURFACING PAVEMENT RESTORATION WILL BE AS SHOWN ON PLANS.
16. IN AREAS WHERE POLLUTED GROUND WATER WILL OR MAY BE DRAWN INTO THE DEWATERING SYSTEM AND THE MDWASD HAS GRANTED PERMISSION TO INSTALL THE SYSTEM COMPONENTS VIA THE "ALTERNATE METHOD OF CONSTRUCTION", I.E. IN THE WET, AND THE CONTRACTOR ELECTS TO PERFORM DEWATERING AS PART OF THE WORK, THE CONTRACTOR SHALL BE FULLY RESPONSIBLE TO PROVIDE RELATED PROFESSIONAL SERVICES, PREPARE APPLICATION DOCUMENTS, SUBMIT AND OBTAIN ANY AND ALL REQUIRED DEWATERING/CONTAMINATION PERMIT APPROVALS (INCLUDING ANY ANCILLARY PERMITS THAT MAY BE REQUIRED, I.E. FROM R.E.R. WATER CONTROL OR POLLUTION CONTROL) PRIOR TO COMMENCING THE WORK AND AT NO ADDITIONAL CONTRACT TIME OR COST TO THE DEPARTMENT.
17. THE CONTRACTOR IS RESPONSIBLE FOR IMPLEMENTATION AND MAINTENANCE OF EROSION CONTROL MEASURES CONTAINED WITHIN THE CONTRACT SPECIFICATIONS OR AS REQUIRED BY THE MUNICIPALITY OR ANY OTHER REGULATORY AUTHORITY. THE CONTRACTOR SHALL ALSO PROVIDE ANY ADDITIONAL EROSION CONTROL MEASURES (E.G. HYDROSEEDING MULCHING OF STRAW, SAND BAGGING, DIVERSION DITCHES, ETC) DICTATED BY FIELD CONDITIONS TO PREVENT EROSION OR THE INTRUSION OF DIRT, MUD, OR DEBRIS INTO EXISTING PUBLIC STREETS, WATERWAYS, OR ONTO ADJACENT PROPERTIES DURING ANY PHASE OF CONSTRUCTION OPERATIONS.
18. THE CONTRACTOR SHALL BE RESPONSIBLE FOR OBTAINING A FLORIDA DEPARTMENT OF ENVIRONMENTAL PROTECTION NPDES GENERIC PERMIT FOR STORMWATER DISCHARGE

FROM LARGE AND SMALL CONSTRUCTION ACTIVITIES PERMIT (GCP) AND A NOTICE OF INTENT (NOI) TO USE SAID GENERIC PERMIT AS PROVIDED IN SUBSECTION 62-621.300(4), F.A.C. PURSUANT TO THE STATE'S FEDERALLY APPROVED NATIONAL POLLUTANT DISCHARGE ELIMINATION SYSTEM STORMWATER REGULATORY PROGRAM (NPDES). THE CONTRACTOR SHALL BE FULLY RESPONSIBLE TO PROVIDE RELATED PROFESSIONAL SERVICES, PREPARE APPLICATION DOCUMENTS AND OBTAIN ALL REQUIRED APPROVALS PRIOR TO COMMENCEMENT OF THE WORK AND AT NO ADDITIONAL CONTRACT TIME OR COST TO THE DEPARTMENT.

- 19. IF EXISTING SERVICE LINES ARE GALVANIZED PIPE, REPLACE WITH 1" COPPER SERVICE WITH DIELECTRIC ADAPTERS.
20. RECONNECT EXISTING SERVICES TO PROPOSED 8" WATER MAIN.
21. PROJECT SPECIFICATIONS SHALL CONFORM TO THE MD-WASD DESIGN AND CONSTRUCTION STANDARD SPECIFICATIONS AND DETAILS.

RER-DEEM WATER-SEWER GENERAL NOTES

- 1. A HORIZONTAL DISTANCE OF AT LEAST 6 FEET, AND PREFERABLY 10 FEET (OUTSIDE TO OUTSIDE) SHALL BE MAINTAINED BETWEEN GRAVITY OR PRESSURE SEWER PIPES AND WATER PIPES. THE MINIMUM HORIZONTAL SEPARATION CAN BE REDUCED TO 3 FEET FOR VACUUM-TYPE SEWERS OR FOR GRAVITY SEWERS WHERE THE BOTTOM OF THESEWER PIPE IS AT LEAST 6 INCHES BELOW THE BOTTOM OF THE WATER PIPE. WHEN THE ABOVE SPECIFIED HORIZONTAL DISTANCE CRITERIA CANNOT BE MET DUE TO AN EXISTING UNDERGROUND FACILITY CONFLICT, SMALLER SEPARATIONS ARE ALLOWED IF: A) THE SEWER PIPES ARE DESIGNED AND CONSTRUCTED EQUAL TO THE WATER PIPE AND PRESSURE TESTED AT 150 PSI. B) THE SEWER IS ENCASED IN A WATERTIGHT CARRIER PIPE OR CONCRETE. C) THE TOP OF THE SEWER IS AT LEAST 18 INCHES BELOW THE BOTTOM OF THE WATER PIPE.
2. A VERTICAL DISTANCE OF AT LEAST 12 INCHES (OUTSIDE TO OUTSIDE) SHALL BE MAINTAINED BETWEEN ANY WATER AND SEWER MAINS WITH SEWER PIPES PREFERABLY CROSSING UNDER WATER MAINS. THE MINIMUM VERTICAL SEPARATION CAN BE REDUCED TO 6 INCHES FOR VACUUM-TYPE SEWERS OR FOR GRAVITY SEWERS WHERE THE SEWER PIPE IS BELOW THE WATER MAIN. THE CROSSING SHALL BE ARRANGED SO THAT ALL WATER MAIN JOINTS ARE AT LEAST 6 FEET FROM ALL JOINTS IN GRAVITY AND PRESSURE SEWER PIPES. THIS DISTANCE CAN BE REDUCED TO 3 FEET FOR VACUUM-TYPE SEWERS. WHEN THE ABOVE SPECIFIED VERTICAL DISTANCE CRITERIA CANNOT BE MET DUE TO AN EXISTING UNDERGROUND FACILITY CONFLICT, SMALLER SEPARATIONS ARE ALLOWED IF:
A) THE SEWER PIPES ARE DESIGNED AND CONSTRUCTED EQUAL TO THE WATER PIPE AND PRESSURE TESTED AT 150 PSI.
B) THE SEWER IS ENCASED IN A WATERTIGHT CARRIER PIPE OR CONCRETE.
3. AIR RELEASE VALVES SHALL BE PROVIDED AT HIGH POINTS OF NEW FORCE MAIN SANITARY SEWERS.
4. GRAVITY SANITARY SEWERS CONSTRUCTED WITHIN A PUBLIC WELLFIELD PROTECTION AREA SHALL BE C-900 PVC OR DUCTILE IRON PIPE. THE MAXIMUM ALLOWABLE EX-FILTRATION RATE OF GRAVITY SANITARY SEWERS CONSTRUCTED IN A PUBLIC WELLFIELD PROTECTION AREA SHALL BE:
A) RESIDENTIAL LAND USES. FIFTY (50) GALLONS PER INCH PIPE DIAMETER PER MILE PER DAY, BASED ON A MINIMUM TWO (2) HOUR TEST HAVING A MINIMUM OF TWO (2) FEET OF POSITIVE HEAD ABOVE THE CROWN OF THE PIPE.
B) NON-RESIDENTIAL LAND USES. TWENTY (20) GALLONS PER INCH PIPE DIAMETER PER MILE PER DAY, BASED ON A MINIMUM TWO (2) HOUR TEST HAVING A MINIMUM OF TWO (2) FEET OF POSITIVE HEAD ABOVE THE CROWN OF THE PIPE.
C) ANY OBSERVED LEAKS OR ANY OBVIOUSLY DEFECTIVE JOINTS OR PIPES SHALL BE REPLACED EVEN WHEN THE TOTAL LEAKAGE IS BELOW THAT ALLOWED.
5. THE MAXIMUM ALLOWABLE EXFILTRATION RATE OF GRAVITY SANITARY SEWERS CONSTRUCTED OUTSIDE A PUBLIC WELLFIELD PROTECTION AREA SHALL BE ONE HUNDRED (100) GALLONS PER INCH PIPE DIAMETER PER MILE PER DAY, BASED ON A MINIMUM TWO (2) HOUR TEST HAVING A MINIMUM OF TWO (2) FEET OF POSITIVE HEAD ABOVE THE CROWN OF THE PIPE. ANY OBSERVED LEAKS OR ANY OBVIOUSLY DEFECTIVE JOINTS OR PIPES SHALL BE REPLACED EVEN WHEN THE TOTAL LEAKAGE IS BELOW THAT ALLOWED.
6. FORCE MAIN SANITARY SEWERS CONSTRUCTED WITHIN A PUBLIC WELLFIELD PROTECTION AREA SHALL BE DUCTILE IRON, C-900 PVC, HOPE OR REINFORCED CONCRETE PRESSURE SEWER PIPES.
7. THE MAXIMUM ALLOWABLE EXFILTRATION/LEAKAGE RATE AFFORCE MAIN SANITARY SEWERS SHALL BE:
A) DUCTILE IRON, C-900 PVC, HOPE AND PVC PIPE. THE ALLOWABLE LEAKAGE RATE SPECIFIED IN AMERICAN WATER WORKS ASSOCIATION STANDARD (AWWAS) C600-82 AT A TEST PRESSURE OF 100 PSI FOR A DURATION OF NOT LESS THAN TWO (2) HOURS.
B) REINFORCED CONCRETE PRESSURE PIPE. HALF (1/2) THE ALLOWABLE LEAKAGE RATE SPECIFIED IN AWWA C600-82 AT A TEST PRESSURE OF 100 PSI FOR A DURATION OF NOT LESS THAN TWO (2) HOURS.
C) ANY OBSERVED LEAKS OR ANY OBVIOUSLY DEFECTIVE JOINTS OR PIPES SHALL BE REPLACED EVEN WHEN THE TOTAL LEAKAGE IS BELOW THAT ALLOWED.
8. THE CONTRACTOR SHALL VERIFY NATURE, DEPTH, AND CHARACTER OF EXISTING UNDERGROUND UTILITIES PRIOR TO START OF CONSTRUCTION.
9. IN NO CASE SHALL A CONTRACTOR INSTALL UTILITY PIPES, CONDUITS, CABLES, ETC. IN THE SAME TRENCH ABOVE AN EXISTING WATER OR SEWER PIPE EXCEPT WHERE THEY CROSS.
10. IF ANY AREA OF THE WORK SITE IS FOUND TO CONTAIN BURIED SOLID WASTE AND/OR GROUND OR GROUND WATER CONTAMINATION, THE FOLLOWING SHALL APPLY:
A) ALL WORK IN THE AREA SHALL FOLLOW ALL APPLICABLE SAFETY REQUIREMENTS (E.G., OSHA, ETC.) AND NOTIFICATION MUST BE PROVIDED TO THE APPROPRIATE AGENCIES.
B) IMMEDIATELY NOTIFY THE ENVIRONMENTAL MONITORING AND RESTORATION DIVISION (EMRD). THE EMRD CAN BE CONTACTED AT (305) 372-6700.
C) IF CONTAMINATED SOILS AND/OR BURIED SOLID WASTE MATERIAL IS EXCAVATED DURING CONSTRUCTION, THEN THEY REQUIRE PROPER HANDLING AND DISPOSAL IN ACCORDANCE WITH THE LOCAL, STATE AND FEDERAL REGULATIONS. BE ADVISED THAT THE LANDFILL OWNER/OPERATOR IS THE FINAL AUTHORITY ON DISPOSAL AND MAY HAVE REQUIREMENTS BEYOND THOSE PROVIDED BY HEREIN. IF DISPOSAL WITHIN A MIAMI-DADE COUNTY OWNED LANDFILL (CLASS I LANDFILL) IS APPROPRIATE AND SELECTED, PLEASE CONTACT THE MIAMI-DADE COUNTY DEPARTMENT OF SOLID WASTE MANAGEMENT AT (305) 594-6666 FOR INFORMATION.

D) THE REUSE OF CONTAMINATED SOILS THAT ARE NOT RETURNED TO THE ORIGINAL EXCAVATION REQUIRES PRIOR APPROVAL OF A SOIL MANAGEMENT PLAN FROM THE ENVIRONMENTAL MONITORING AND RESTORATION DIVISION. THE EMRD CAN BE CONTACTED AT (305) 372-6700.

THE FOLLOWING ARE REQUIREMENTS PER DEPARTMENT OF HEALTH WATER MAIN HORIZONTAL SEPARATIONS

SEPARATIONS SHALL BE MEASURED OUTSIDE EDGE TO OUTSIDE EDGE.

BETWEEN WATER MAINS AND, STORM SEWERS, STORMWATER FORCE MAINS, OR RECLAIMED WATER LINES, SHALL BE 3 FT. MINIMUM.

BETWEEN WATER MAINS AND VACUUM TYPE SEWER PREFERABLY 10 FT. AND AT LEAST 3 FT. MINIMUM.

GRAVITY OR PRESSURE SANITARY SEWERS, WASTEWATER FORCE MAINS OR RECLAIMED WATER PREFERABLY 10 FT. AND AT LEAST 6 FT.*

*GRAVITY SEWER ONLY MAY BE REDUCED TO 3 FT. WHERE BOTTOM OF WATER MAIN IS AT LEAST 6 INCHES ABOVE TOP OF SEWER.

10 FT. TO ANY PART OF ON-SITE SEWER TREATMENT OR DISPOSAL SYSTEM. WATER MAIN VERTICAL SEPARATIONS

SEPARATIONS BETWEEN WATER MAINS AND GRAVITY SEWER VACUUM TYPE SEWER OR STORM SEWERS, TO BE PREFERABLY 12 INCHES OR AT LEAST 6 INCHES ABOVE OR AT LEAST 12 INCHES BELOW.*

PRESSURE SANITARY SEWER, WASTEWATER OR STORM WATER FORCE MAIN, OR RECLAIMED WATER, AT LEAST 12 INCHES ABOVE OR BELOW.*

* CENTER 1-FULL LENGTH OF WATER MAIN PIPE AT CROSSINGS; ALTERNATIVELY ARRANGE PIPES SO JOINTS ARE AT LEAST 3 FEET FROM JOINTS IN VACUUM, STORM OR STORM FORCE MAINS, AT LEAST 6 FEET FROM JOINTS IN GRAVITY OR PRESSURE SEWERS, WASTEWATER FORCE MAINS OR RECLAIMED WATER.

NOTE: IN ALL CASES, INCLUDING EXCEPTIONS, REFER TO F.A.C. 62-555.314

LEGEND

Table with two columns listing symbols and their corresponding utility types. Includes: Exist. Water Main, Exist. Storm Sewer, Exist. Sanitary Sewer, Exist. Force Main, Exist. Gas, Center line, Base line, Monument line, Section line, Right of way line, Property line, Exist. Telephone, Exist. Electric underground, Exist. Cable underground, Exist. Traffic loop, Required, O/S, D.I., REST. J., Exist. Guy Wire, Exist. Street Light Pole, Exist. Utility Conc. Pole, Exist. Utility Pole, Exist. Flood Light, Exist. Traffic Light Pole, Exist. Pedestrian Crossing Light, Exist. Electric Box, Exist. Street Light Box, Exist. Telephone Box, Exist. Traffic Signal Box, Exist. Cable TV Box, Exist. C.B., Exist. Electric MH, Exist. Storm MH, Exist. Sanitary MH, Exist. Telephone MH, Exist. Water MH, Exist. Well, Exist. Sprinkler, Exist. Fire Hydrant, Exist. Valve, Core Boring, Exist. Sign, Exist. Single Water Meter, Prop. Single Water Meter, Prop. Dual Water Meter, Limits of milling and resurfacing pavement restoration.

MIAMI-DADE WATER AND SEWER DEPARTMENT DESIGN AND CONSTRUCTION STANDARD DETAILS

Table with columns FOR, SEE DETAIL, SHEET. Lists details for pavement restoration, polyethylene encasement, tie-rod details, sewer main crossings, trench backfill, air release valves, flushing valve outlets, valve boxes, fire hydrant installations, and steel connections.

NOTES:

- 1. THE ABOVE LIST SHALL NOT BE CONSIDERED AS NECESSARILY COMPLETE, NOR SHALL THE STANDARD DETAILS WHICH MAY BE INCLUDED ELSEWHERE HEREIN BE CONSIDERED AS FORMING A COMPLETE LISTING OF ALL STANDARD DETAILS WHICH MAY APPLY TO THIS PROJECT.
2. ALL STANDARD DETAILS ARE INCORPORATED IN THE ABOVE LIST BY REFERENCE AND ALL WORK SHALL BE PERFORMED IN ACCORDANCE WITH ALL APPLICABLE M-D WASD STANDARD DETAILS.

WATER & SEWER DEPARTMENT
3071 SW 38TH AVENUE
MIAMI, FL 33146-1520
305-665-7471
www.miamidade.gov/water

A&P Consulting
Transportation Engineers Corp.
10305 N.W. 41 Street, suite 115
Miami, FL 33178
305 592-7283 / fax: 305 593-1594
CA No. : EB-0007797
Amelio Alfonso, P.E. No. 52566

INSTALLATION 8 INCH D.I. WATER MAIN
IN S.W. 64TH CT. FROM S.W. 8TH ST. TO S.W. 6TH ST.
PCTS No. 14706, ER No. W-017009
CITY OF MIAMI J.P.A. PROJECT No. B 3072
GENERAL NOTES AND LEGEND

DRAWING HISTORY

Table with columns RELEASED FOR, DATE, BY. Shows review and submittal dates.

REVISIONS

Table with columns No., DESCRIPTION, DATE, BY. Shows no revisions.

APPROVALS

PROJECT MGR: B.T. CHECKED: A.A.

DESIGNED BY: AMELIO ALFONSO

DATE: 02/22/17

EC: 100% HEAD

DESIGN MGR: AMELIO ALFONSO

DATE: 02/22/17

PROFESSIONAL ENGINEER

No. 52566

State of Florida

3071 SW 38TH AVENUE

MIAMI, FL 33146-1520

305-665-7471

www.miamidade.gov/water

DATE: SCALE:

SHEET WM-02 OF WM-14

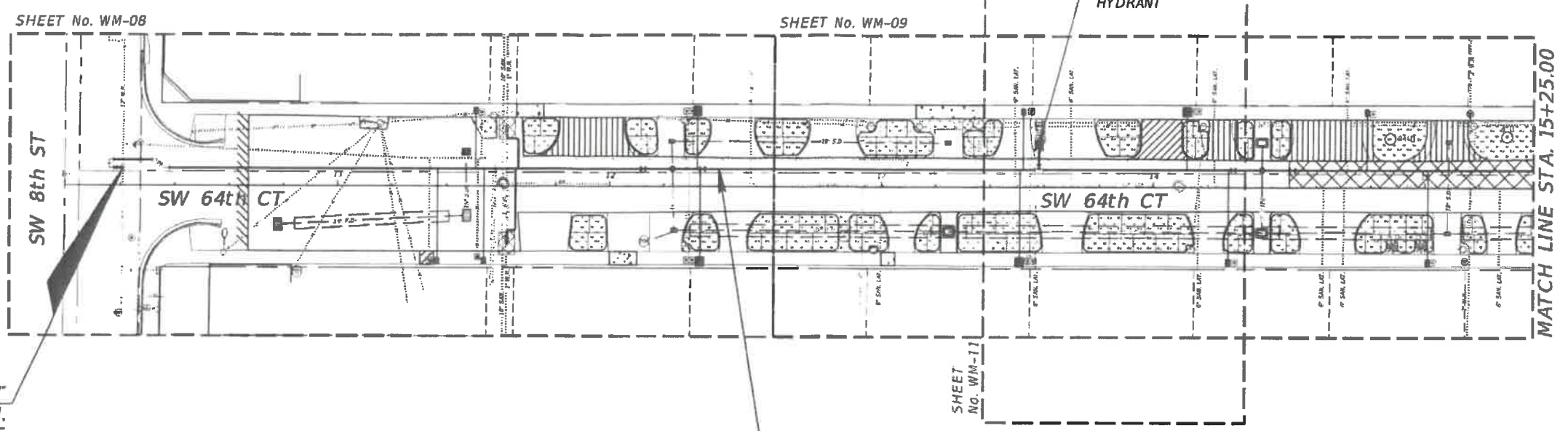
DWG. No.



WATER & SEWER DEPARTMENT
 3071 SW 98TH AVENUE
 MIAMI, FL 33148-1520
 305-685-7471
 www.miamidade.gov/water

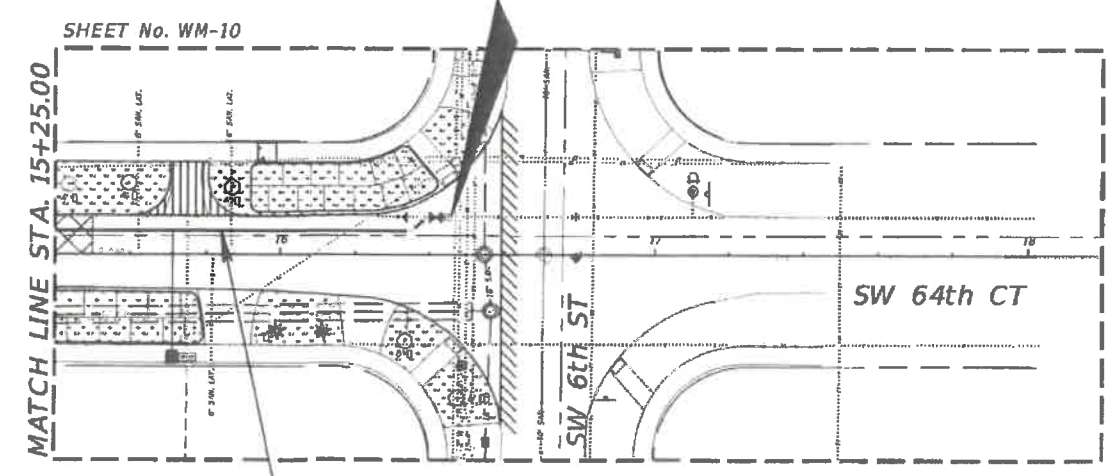
A&P Consulting Transportation Engineers Corp.
 10305 N.W. 41 Street, suite 115
 Miami, FL 33178
 305 592-7283 / fax: 305 583-1594
 CA No. : EB-0007797
 Arnello Alfonso, P.E. No. 52566

INSTALLATION 8 INCH D.I. WATER MAIN
 IN S.W. 64TH CT. FROM S.W. 8TH ST. TO S.W. 6TH ST.
 PCTS No. 14706, ER No. W-017009
 CITY OF MIAMI J.P.A. PROJECT No. B 30972
 PROP. 8' D.I. W.M. GENERAL PLAN



BEGIN PROJECT
 PROP. 8" D.I. W.M.
 STA. 10+21.05
 OFFSET 6.33' LT

END PROJECT
 PROP. 8" D.I. W.M.
 STA. 16+44.33
 (O/S 10.00' LT)



DRAWING HISTORY

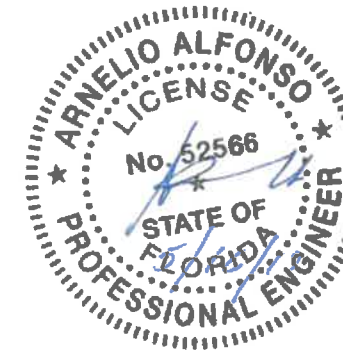
RELEASED FOR	DATE	BY
REVIEW 60%	02/22/17	A.A.
REVIEW 90%	03/30/17	A.A.
SUBMITTAL 100%	05/15/17	A.A.

REVISIONS

No.	DESCRIPTION	DATE	BY

APPROVALS

PROJECT MGR: B.T. CHECKED: A.A.
 DESIGNED: V.M. DRAWN: H.P.
 CHIEF ENGINEER:
 SECTION HEAD:
 DESIGN MGR.:



Arnello Alfonso, P.E.
 Civil Engineer
 State of Florida - License No. 52566
 10305 NW 41 ST Doral, Florida 33178
 (305) 692-7283
 Date: _____

FILE NAME:
 DATE: SCALE:
 SHEET WM-03 OF WM-14
 DWG. No.

MAP OF TOPOGRAPHIC SURVEY

SURVEYOR'S REPORT:

DATE OF SURVEY:

The date of completion of Survey was on July 15, 2015.

SURVEY LIMITS:

A portion of the following Public Right-of-Way, along S.W. 64th Court from S.W. 6th Street and S.W. 8th Street, lying and being in the City of Miami, Miami-Dade County, Florida.

ACCURACY:

The accuracy obtained by field measurement methods and office calculations of closed geometric figures meets and exceeds the Minimum Technical Standards requirement for Suburban Area (Linear 1 foot in 7,500 feet) as defined in Rule 5J-17.051 of the Florida Administrative Code.

Elevations of well identified features as depicted on the Survey Map were measured to an estimated vertical position accuracy of 1/100 of a foot on hard surfaces and 1/10 of a foot on ground surfaces.

Well identified features as depicted on the Survey Map were measured to an estimated horizontal position accuracy of 1/10 of a foot.

This Map of Survey is intended to be displayed at a scale of One inch equals Twenty feet or smaller.

PERTINENT INFORMATION USED FOR SURVEY:

For Horizontal Control:

Bearings and Coordinates are relative to the State Plane Coordinate System, Florida East Zone (0901), North American Datum (N.A.D.) of 1983, adjustment of 1990 (NAD 83 / 1990) Epoch 2010.0000; with a bearing of N02°23'22"W, being established for the centerline of S.W. 64th Court, said line to be considered a well established and monumented line.

Global Positioning System (G.P.S.), measurements were conducted in the field to acquire said coordinate values, which are based on the following Horizontal Control Stations:

Name: 86 ALONSO
Latitude: 25° 45' 45.45152" N
Longitude: 80° 17' 13.69323" W
Ellipsoid Height (Meters): -22.041
State Plane Coordinates
Northing: 520051.230
Easting: 890779.009

All referenced Stations are part of the Florida Permanent Reference Network (FPRN) www.dot.state.fl.us/surveyingandmapping/fprn.htm

All measurements are in U.S. Survey feet.

This property appears to be located in Flood Zone "X", as per Federal Emergency Management Agency (FEMA) Community Panel Number 120650 (City of Miami), Map No. 12086C0293, Suffix L, Map Revised Date: September 11, 2009.

For Vertical Control:

All elevations shown hereon are based on the City of Miami Vertical Datum, and a Benchmark supplied by the Public Works Department of Miami-Dade County, Florida.

Benchmark: MDC F-238
Elevation: +11.44 (N.G.V.D. 29)
Elevation: +11.70 (City of Miami Vertical Datum)
Located at 54' South of South curb of the centerline of S.W. 8th Street and 330' S.W. of intersection with S.W. 63rd Avenue

Plat of "FAIR LAWN" recorded in Plat Book 8 at Page 83 of the Public Records of Miami-Dade County, Florida.

City of Miami Municipal Atlas Sheet 30N, prepared by the City of Miami, Public Works Department, last dated on September 12, 1972.

RESTRICTIONS:

Since no other information were furnished other than that is cited under pertinent information, the Client is hereby advised that there may be legal restrictions on the Subject Property that are not shown on the Survey Map that may be found in the Public Records of Miami-Dade County.

The Surveyor makes no representation as to ownership or possession of the Subject Property by any entity or individual that may appear on the Public Records of this County.

No excavation or determination was made as to how the Subject Property is served by utilities.

No improvements were located, other than those shown. No underground foundations, improvements and/or utilities were located or shown hereon.

PURPOSE OF SURVEY:

The purpose of this survey is for design.

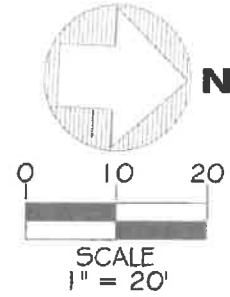
CLIENT INFORMATION:

This Topographic Survey was prepared at the insistence of and certified to:

A & P CONSULTING & TRANSPORTATION ENGINEERS

JOB NO.: 15387.0.00
FIELD BOOK: EFB

DRAWN BY: JL
SHEET 1 OF 4



(#18) CATCH BASIN
RIM ELEV.: 6.73
NORTH INV.: 0.88
24" Ø PIPE
(MAT. NOT DETERMINED)
BOTTOM ELEV.: -0.52

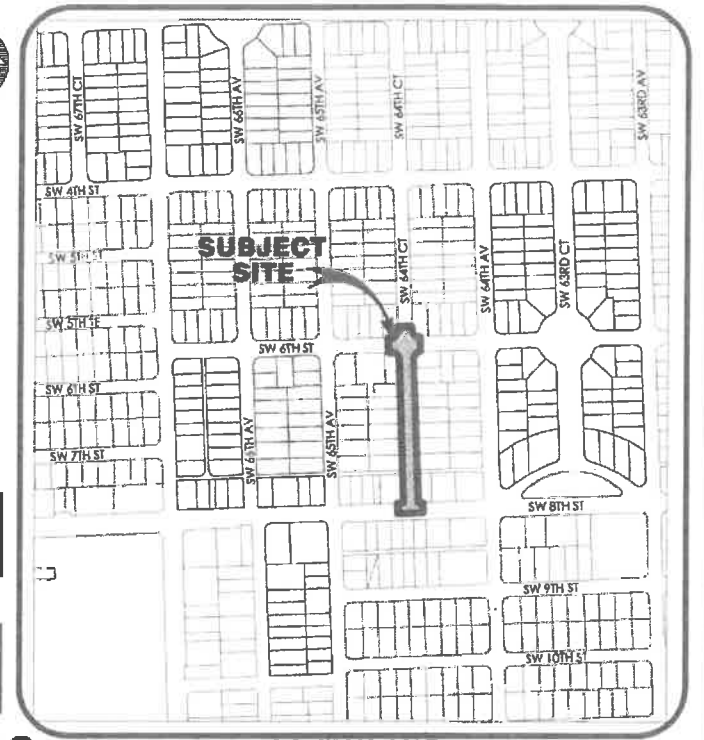
(#19) CATCH BASIN
RIM ELEV.: 8.31
EAST INV.: 4.91
18" Ø CONC. PIPE
BOTTOM ELEV.: 4.41

(#20) CATCH BASIN
RIM ELEV.: 7.98
FULL OF DEBRIS
BOTTOM ELEV.: -0.27

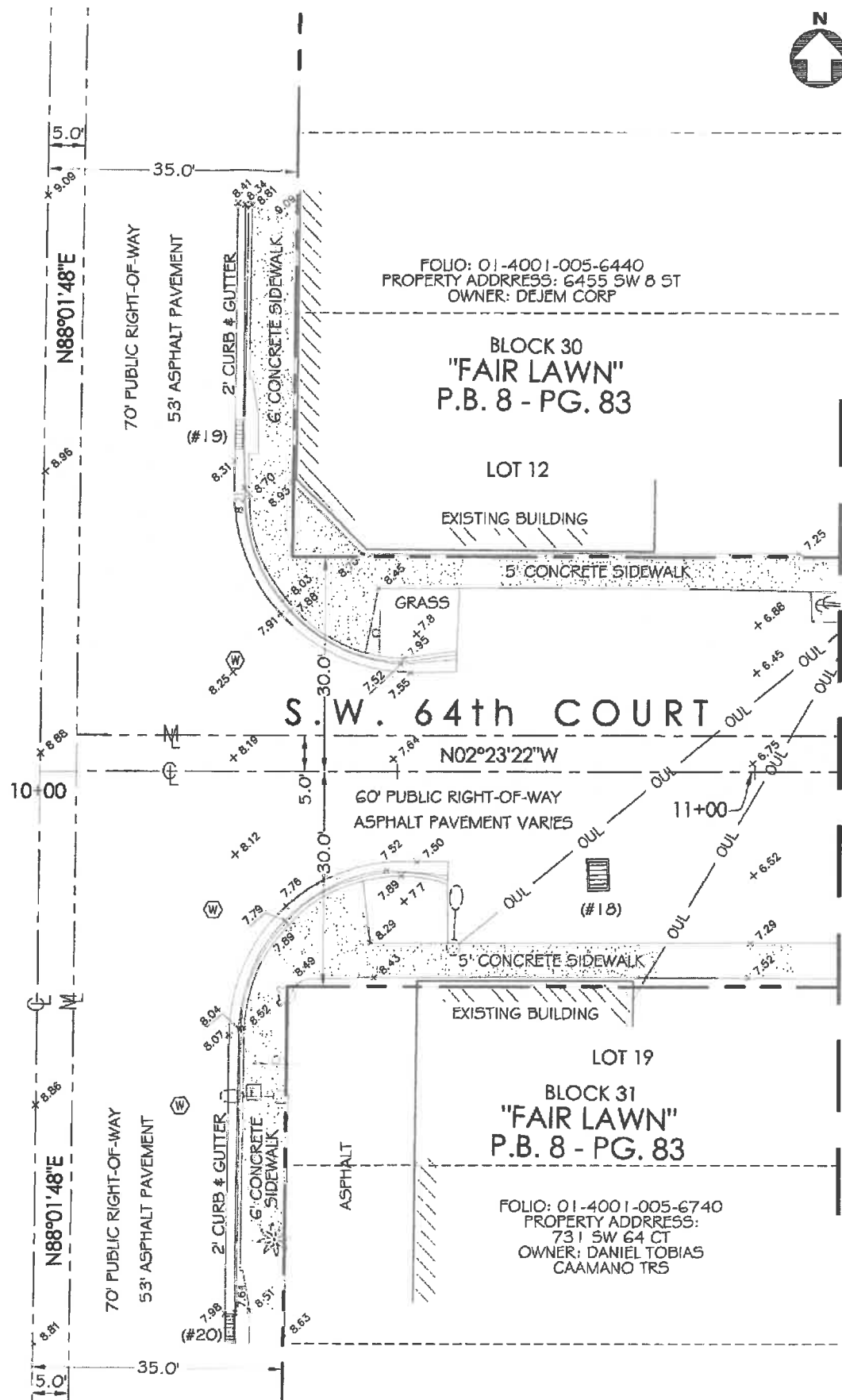
SITE TEMPORARY BENCHMARK # 1
(TBM #1)
ELEVATION = 8.70
SET FK NAIL & DISC
(L.B. 7335)
N: 520200.24
E: 886245.35

LEGEND	
CONC.	= CONCRETE
REC.	= RECORDED VALUE
MEAS.	= MEASURED VALUE
CALC.	= CALCULATED
CL	= CENTERLINE
P.B.	= PLAT BOOK
P.C.	= PAGE
W.P.P.	= WOOD POWER POLE
G.A.	= GUY ANCHOR
ID	= IDENTIFICATION
CB	= CATCH BASIN
ML	= MONUMENT LINE
OW	= OVERHEAD WIRE
WV	= WATER VALVE
WM	= WATER METER
FH	= FIRE HYDRANT
TSB	= TEMPORARY SITE BENCHMARK
CP	= CONCRETE POWER POLE
OP	= ORNAMENTAL PLANT
LP	= LIGHT POLE
T	= TREE
PT	= PALM TREE
CO	= CLEAN OUT
SSM	= SANITARY SEWER MANHOLE
SDM	= STORM DRAINAGE MANHOLE
UM	= UNKNOWN MANHOLE
C	= CONCRETE
A	= ASPHALT
S	= SIGN

SECTION 01 - TOWNSHIP 54 SOUTH - RANGE 40 EAST
LYING AND BEING IN THE CITY OF MIAMI, FLORIDA



S.W. 8th STREET



MATCH LINE STATION: 11+00

LONGITUDE SURVEYORS
7715 NW 48th STREET, SUITE 310
DORAL, FLORIDA 33166
PHONE: (305) 463-0912 FAX: (305) 513-5680
WWW.LONGITUDESURVEYORS.COM

SURVEYOR'S CERTIFICATE:

I hereby certify: That this "Topographic Survey" and the Survey Map resulting therefrom was performed under my direction and is true and correct to the best of my knowledge and belief and further, that said "Topographic Survey" meets the intent of the applicable provisions of the "Minimum Technical Standards for Land Surveying in the State of Florida", pursuant to Rule 5J-17.051 through 5J-17.052 of the Florida Administrative Code and its implementing law, Chapter 472.027 of the Florida Statutes.

LONGITUDE SURVEYORS LLC., a Florida Limited Liability Company, Florida Certificate of Authorization Number L87335

By: Eduardo M. Suarez, PSM Signature Date
Registered Surveyor and Mapper LS6313
State of Florida

NOTICE: Not valid without the signature and original raised seal of a Florida Licensed Surveyor and Mapper. Additions or deletions to Survey Maps by other than the signing party are prohibited without the written consent of the signing party.

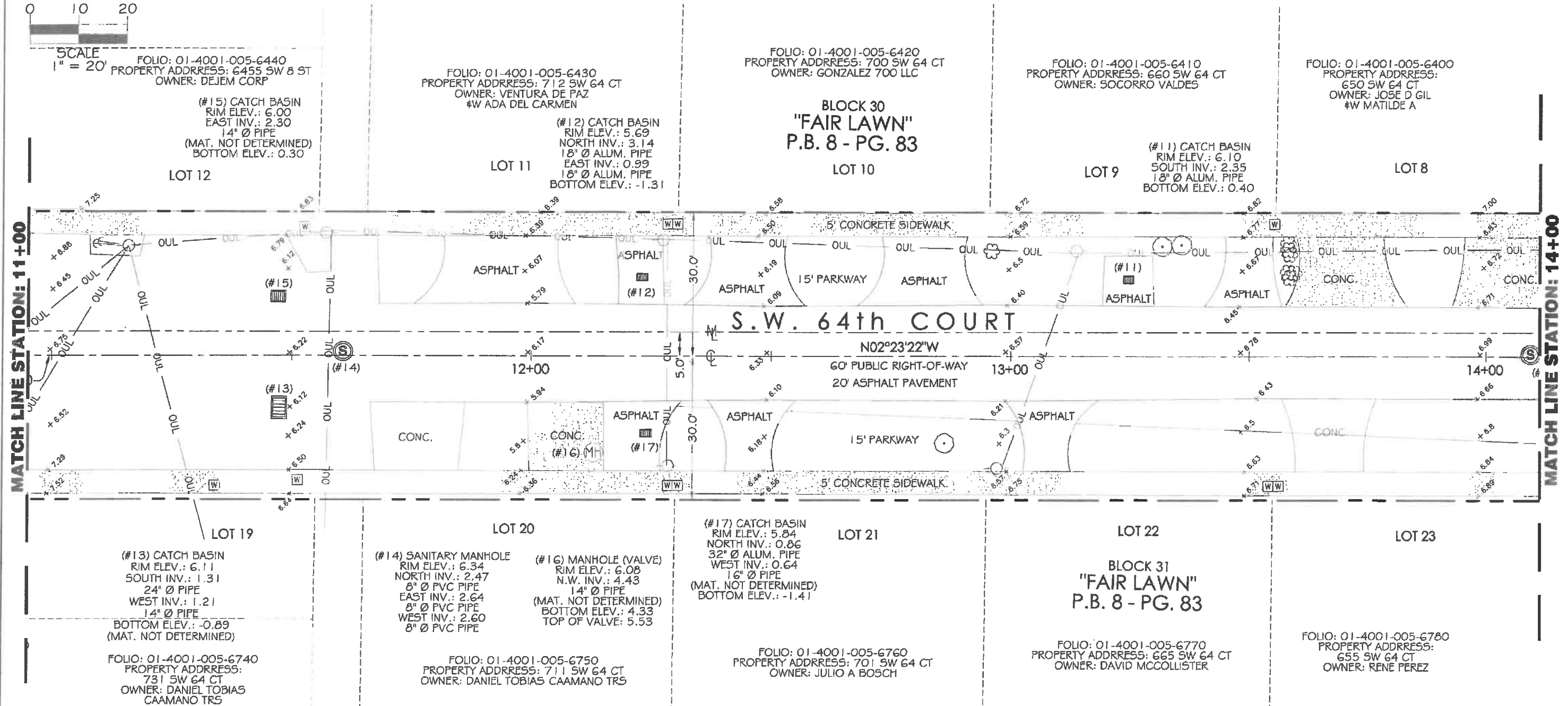
MAP OF TOPOGRAPHIC SURVEY



SCALE
1" = 20'

MATCH LINE STATION: 11+00

MATCH LINE STATION: 14+00

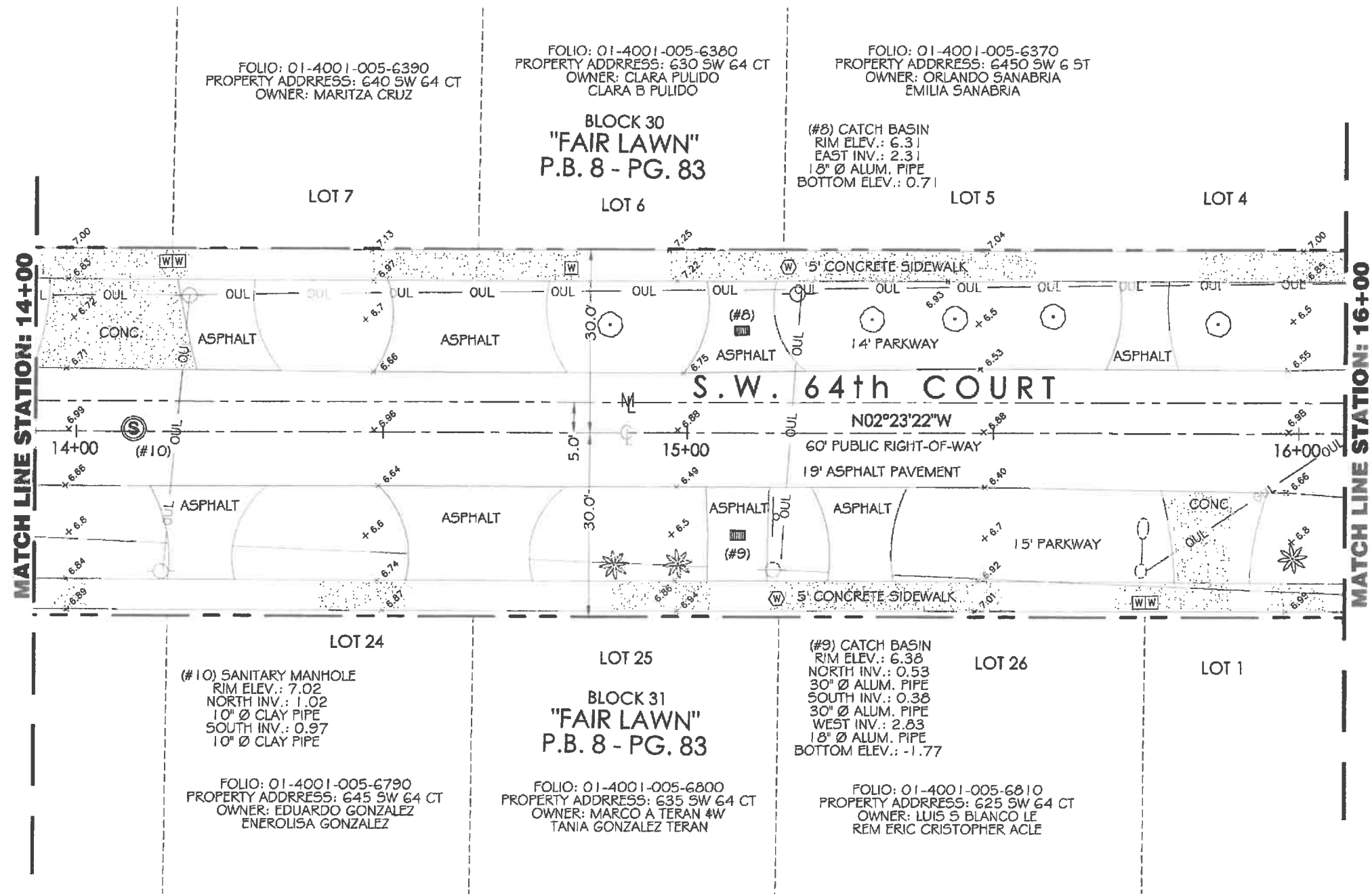
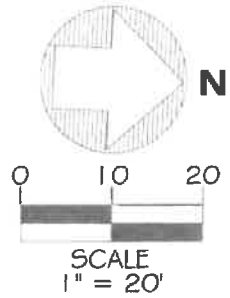


LONGITUDE SURVEYORS
7715 NW 48th STREET, SUITE 310
DORAL, FLORIDA 33166
PHONE: (305)463-0912 FAX: (305)513-5680
WWW.LONGITUDESURVEYORS.COM

JOB NO.: 16387.0.00 DRAWN BY: JL
FIELD BOOK: EFB SHEET 2 OF 4

LEGEND			
CONC.	= CONCRETE	⊕	= CLEAN OUT
R	= RECORDED VALUE	⊙	= SANITARY SEWER MANHOLE
M	= MEASURED VALUE	⊗	= STORM DRAINAGE MANHOLE
(C)	= CALCULATED	⊘	= UNKNOWN MANHOLE
⊕	= CENTERLINE	■	= CONCRETE
P.B.	= PLAT BOOK	▨	= ASPHALT
PG.	= PAGE	□	= SIGN
⊙	= WOOD POWER POLE	⊗	= PALM TREE
⊙	= GUY ANCHOR		
ID.	= IDENTIFICATION		
⊕	= CATCH BASIN		
— —	= MONUMENT LINE		
— —	= OVERHEAD WIRE		
⊕	= WATER VALVE		
⊕	= WATER METER		
⊕	= FIRE HYDRANT		
⊕	= TEMPORARY SITE BENCHMARK		
⊕	= CONCRETE POWER POLE		
⊕	= ORNAMENTAL PLANT		
⊕	= LIGHT POLE		
⊕	= TREE		

MAP OF TOPOGRAPHIC SURVEY



LONGITUDE SURVEYORS

7715 NW 48TH STREET, SUITE 310
 DORAL, FLORIDA 33166
 PHONE: (305)463-0912 FAX: (305)513-5680
 WWW.LONGITUDESURVEYORS.COM

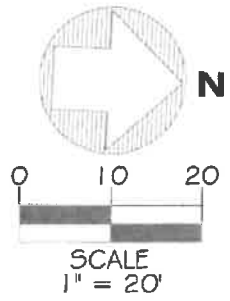
JOB NO.: 15387.0.00
 FIELD BOOK: EFB

DRAWN BY: JL
 SHEET 3 OF 4

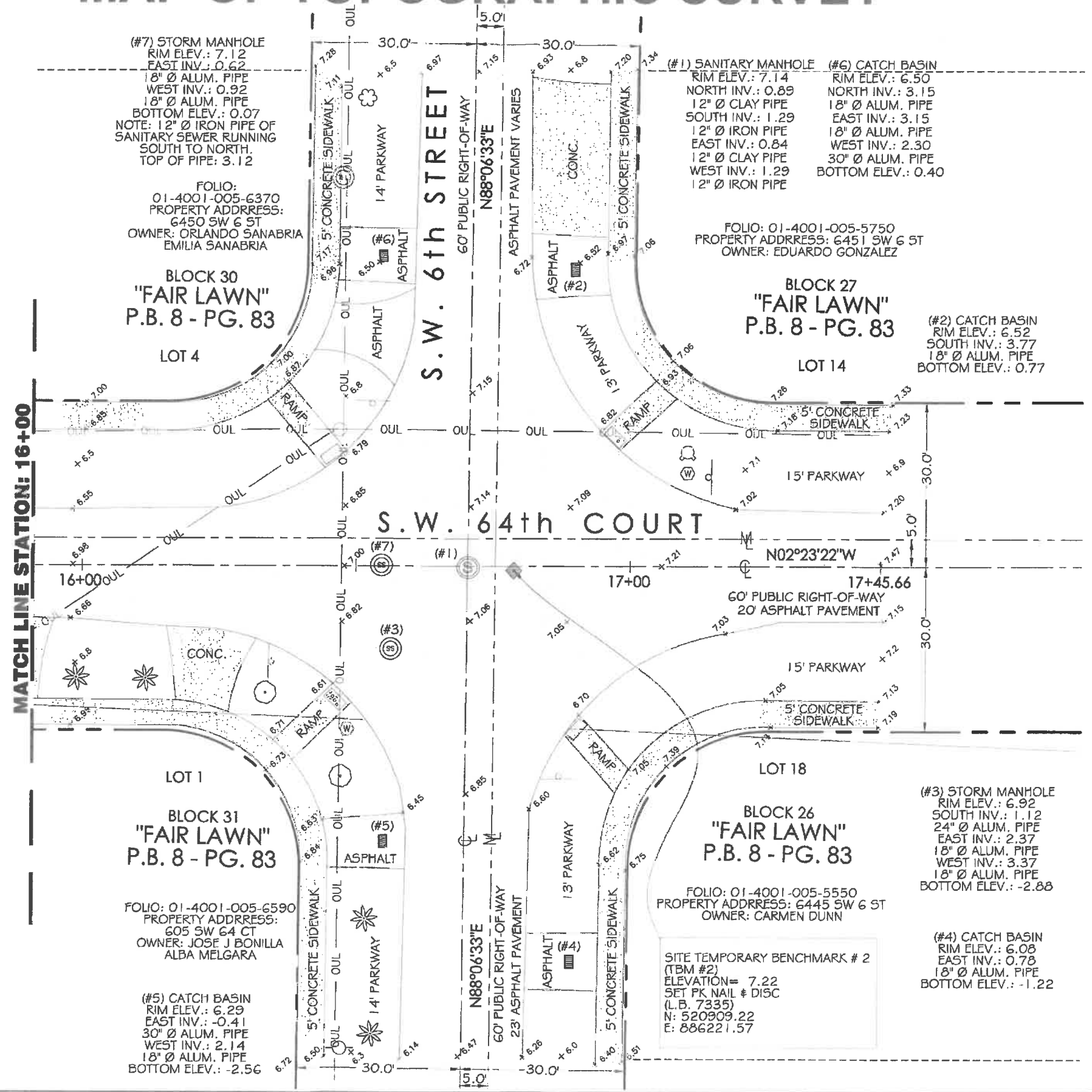
LEGEND

- | | | |
|----------------------|------------------------------|----------------------------|
| CONC. = CONCRETE | M = MONUMENT LINE | ⊙ = CLEAN OUT |
| R = RECORDED VALUE | — OUL — = OVERHEAD WIRE | ⊙ = SANITARY SEWER MANHOLE |
| M = MEASURED VALUE | ⊙ = WATER VALVE | ⊙ = STORM DRAINAGE MANHOLE |
| (C) = CALCULATED | ⊙ = WATER METER | ⊙ = UNKNOWN MANHOLE |
| F = CENTERLINE | ⊙ = FIRE HYDRANT | ⊙ = CONCRETE |
| P.B. = PLAT BOOK | ⊙ = TEMPORARY SITE BENCHMARK | ⊙ = ASPHALT |
| PG. = PAGE | ⊙ = CONCRETE POWER POLE | ⊙ = SIGN |
| ⊙ = WOOD POWER POLE | ⊙ = ORNAMENTAL PLANT | ⊙ = PALM TREE |
| ⊙ = GUY ANCHOR | ⊙ = LIGHT POLE | |
| ID. = IDENTIFICATION | ⊙ = TREE | |
| ⊙ = CATCH BASIN | | |

MAP OF TOPOGRAPHIC SURVEY

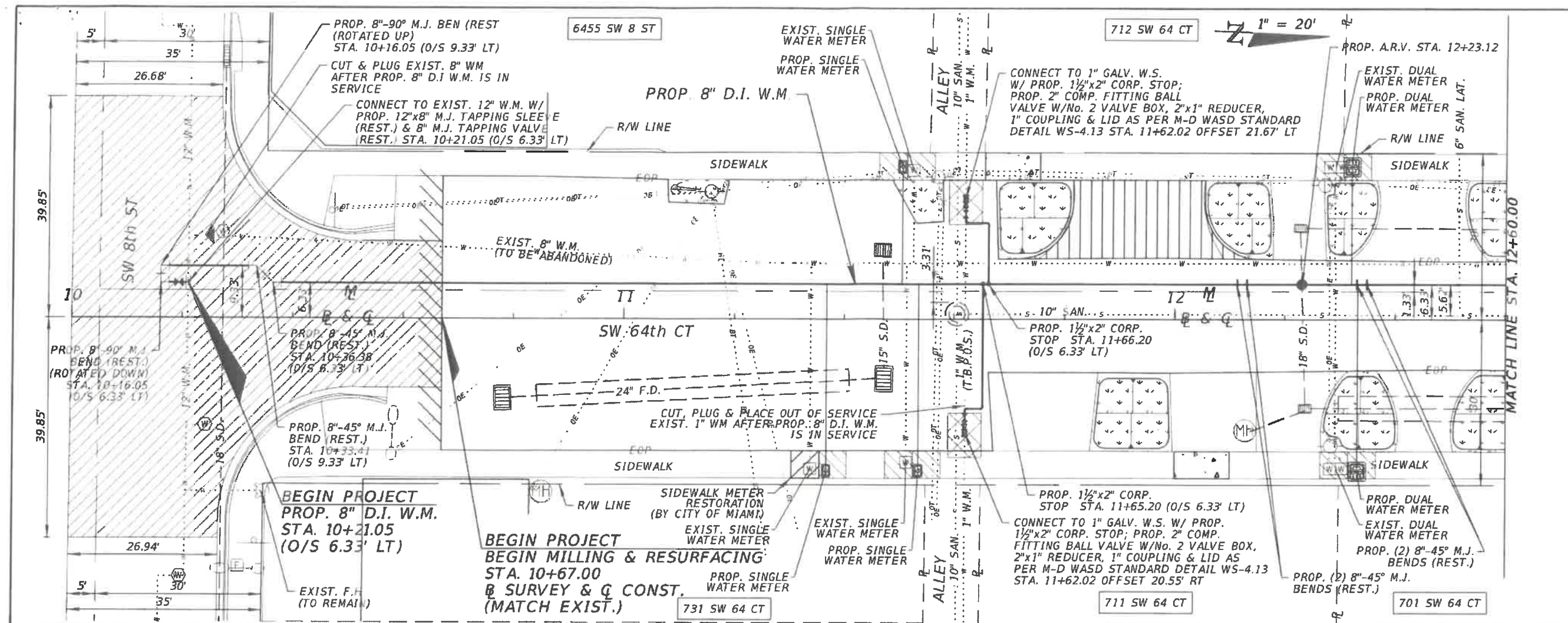


LEGEND	
CONC.	= CONCRETE
REC.	= RECORDED VALUE
MEAS.	= MEASURED VALUE
CALC.	= CALCULATED
CL	= CENTERLINE
P.B.	= PLAT BOOK
PG.	= PAGE
W.P.P.	= WOOD POWER POLE
G.A.	= GUY ANCHOR
ID.	= IDENTIFICATION
CB	= CATCH BASIN
ML	= MONUMENT LINE
OW	= OVERHEAD WIRE
WV	= WATER VALVE
WM	= WATER METER
FH	= FIRE HYDRANT
T.S.B.	= TEMPORARY SITE BENCHMARK
C.P.P.	= CONCRETE POWER POLE
OP	= ORNAMENTAL PLANT
LP	= LIGHT POLE
T	= TREE
PT	= PALM TREE
CO	= CLEAN OUT
SM	= SANITARY SEWER MANHOLE
SDM	= STORM DRAINAGE MANHOLE
UM	= UNKNOWN MANHOLE
CONC.	= CONCRETE
ASP.	= ASPHALT
S	= SIGN
TM	= TELEPHONE MANHOLE



LONGITUDE SURVEYORS

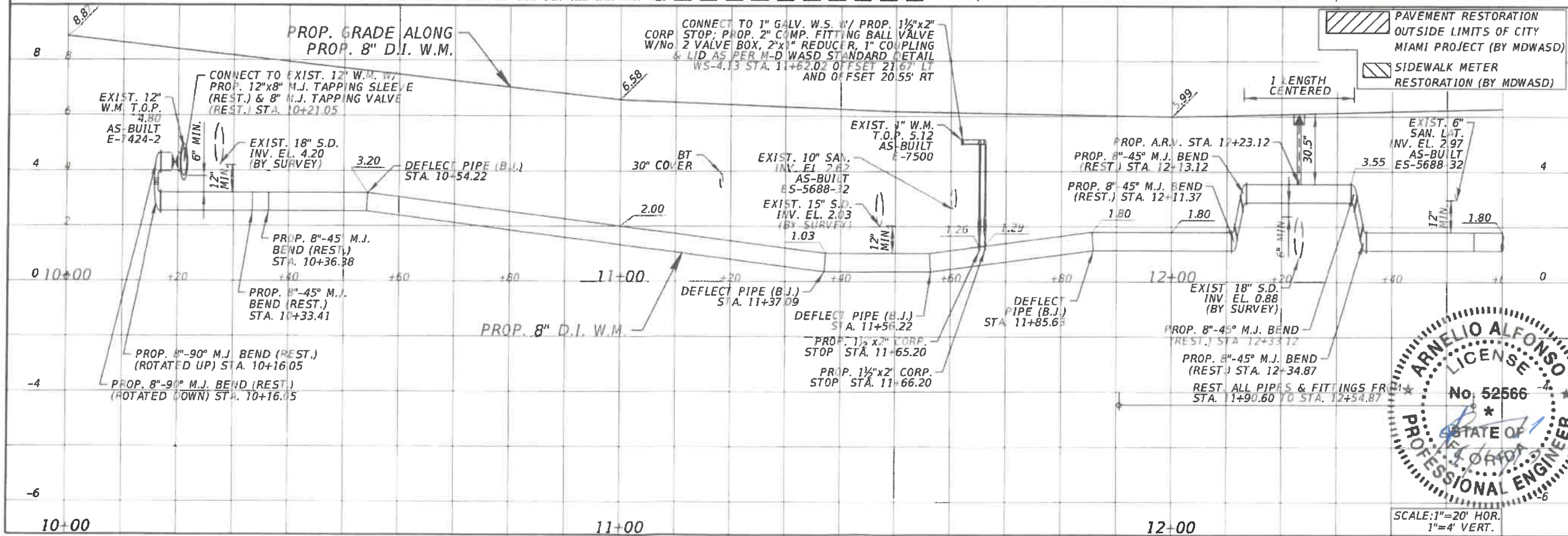
7715 NW 48th STREET, SUITE 310
 DORAL, FLORIDA 33166
 PHONE: (305)463-0912 FAX: (305)513-5680
 WWW.LONGITUDESURVEYORS.COM



WATER & SEWER DEPARTMENT
 3071 SW 38TH AVENUE
 MIAMI, FL 33146-1520
 305-665-7471
 www.miamidade.gov/water

A&P Consulting Transportation Engineers Corp.
 10305 N.W. 41 Street, suite 115
 Miami, FL 33178
 305 592-7283 / fax:305 593-1694
 CA No. : EB-0007797
 Arnello Alfonso, P.E. No. 52566

INSTALLATION 8 INCH D.I. WATER MAIN
 IN S.W. 64TH CT. FROM S.W. 8TH ST. TO S.W. 6TH ST.
 PCTS No. 14706, ER No. W-017009
 CITY OF MIAMI J.P.A. PROJECT No. B 50972
 PROP. 8" D.I. W.M. PLAN & PROFILE



DRAWING HISTORY

RELEASED FOR	DATE	BY
REVIEW 60%	2/22/2017	A.A.
REVIEW 90%	3/20/2017	A.A.
SUBMITTAL 100%	5/15/2017	A.A.

REVISIONS

No.	DESCRIPTION	DATE	BY

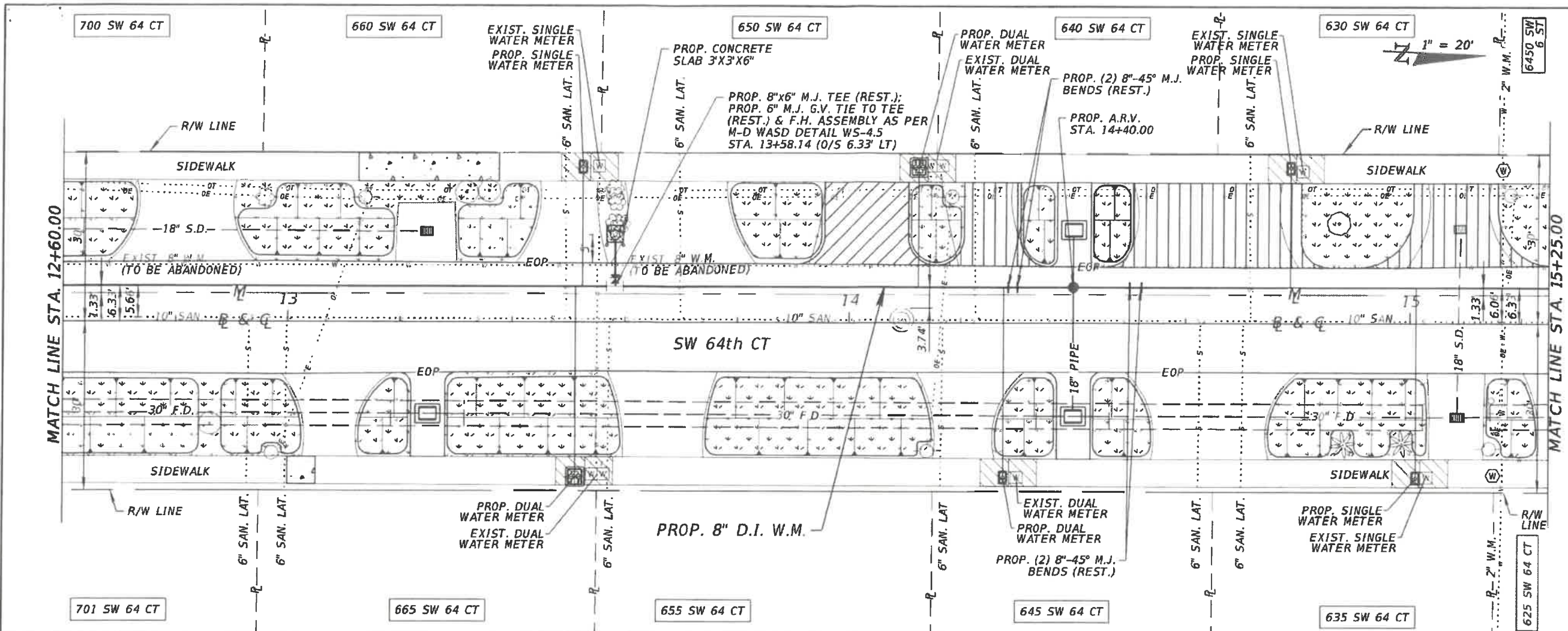
APPROVALS

PROJECT MGR: B.T. CHECKED: A.A.
 DESIGNED: V.M. DRAWN: N.P.
 CHIEF ENGINEER:
 SECTION HEAD:
 DESIGN MGR:

Arnello Alfonso, P.E.
 Civil Engineer
 State of Florida - License No. 52566
 10305 NW 41 ST Doral, Florida 33178
 (305) 592-7283
 Date: _____

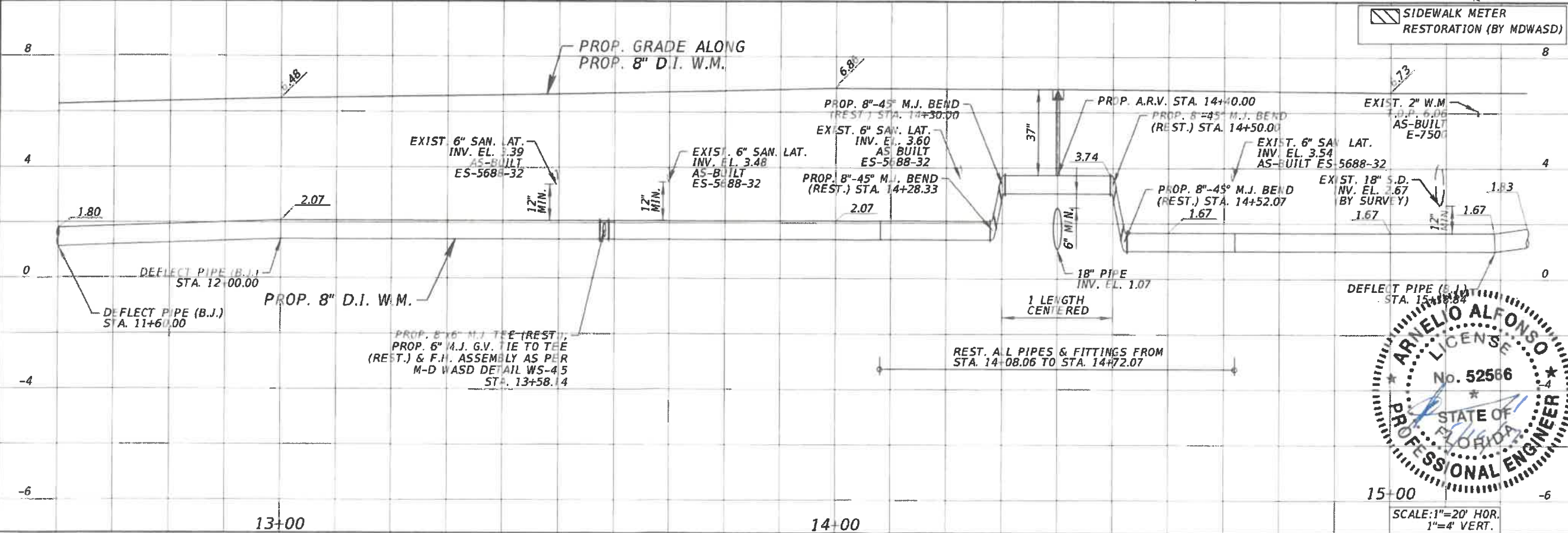
FILE NAME:
 DATE: SCALE: 1"=20' HOR.
 SHEET WM-08 OF WM-14
 DWG. No.





WATER & SEWER DEPARTMENT
 3071 SW 38TH AVENUE
 MIAMI, FL 33146-1520
 305-665-7471
 www.miamidade.gov/water
A&P Consulting Transportation Engineers Corp.
 10305 N.W. 41 Street, suite 115
 Miami, FL 33178
 305 592-7283 / fax: 305 593-1504
 CA No.: EB-0007797
 Amelio Alfonso, P.E. No. 52566

INSTALLATION 8 INCH D.I. WATER MAIN
IN S.W. 64TH CT. FROM S.W. 8TH ST. TO S.W. 6TH ST.
 PCTS No. 14706, ER No. W-017009
CITY OF MIAMI J.P.A. PROJECT No. B 50972
PROP. 8" D.I. W.M. PLAN & PROFILE



SIDEWALK METER RESTORATION (BY MDWASD)

DRAWING HISTORY

RELEASED FOR	DATE	BY
REVIEW 60%	2/22/2017	A.A.
REVIEW 90%	3/20/2017	A.A.
SUBMITTAL 100%	5/15/2017	A.A.

REVISIONS

No.	DESCRIPTION	DATE	BY

APPROVALS

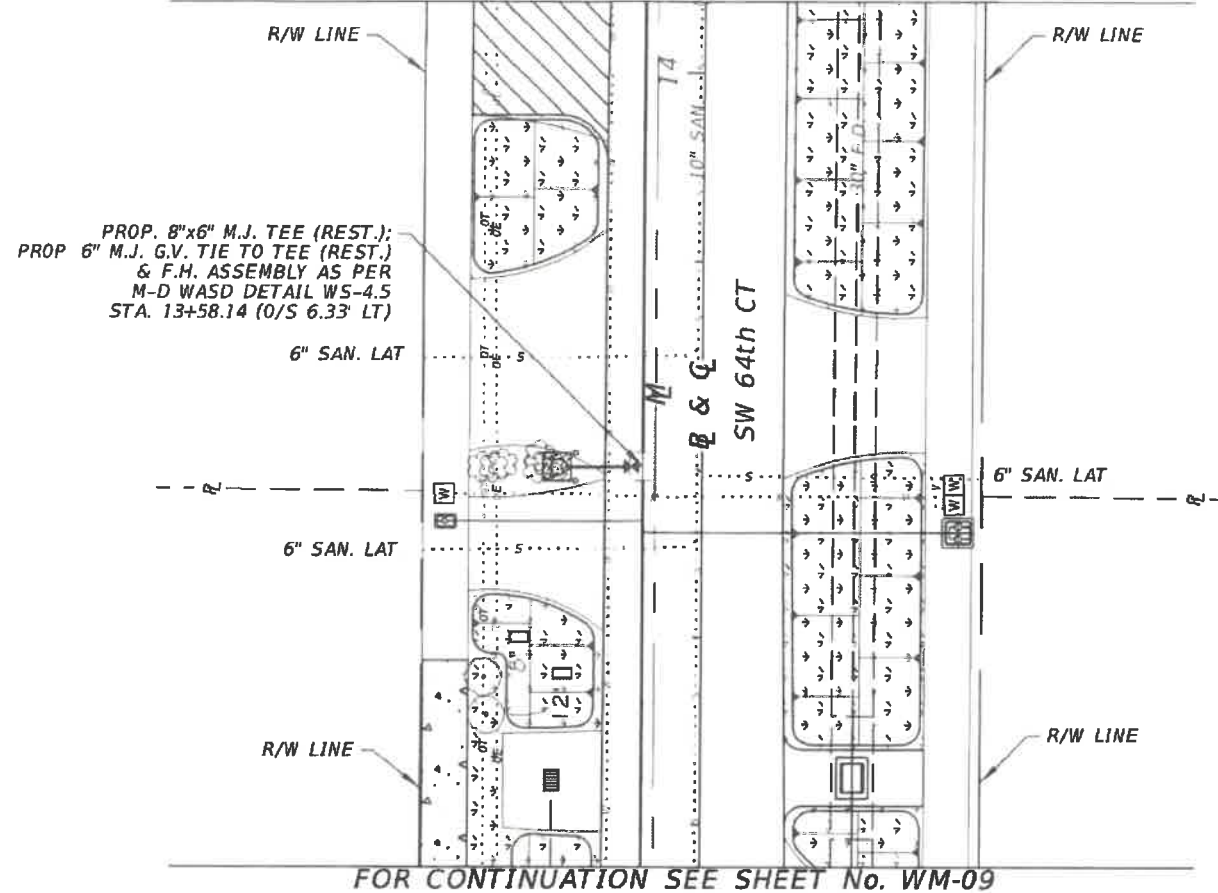
PROJECT MGR: B.T. CHECKED: A.A.
 DESIGNED: V.M. DRAWN: N.P.
 CHIEF ENGINEER:
 SECTION HEAD:
 DESIGN MGR.:

Amelio Alfonso, P.E.
 Civil Engineer
 State of Florida - License No. 52566
 10305 NW 41 ST Doral, Florida 33178
 (305) 592-7283
 Date: _____



FILE NAME:
 DATE: _____ SCALE: 1"=20'
 SHEET WM-09 OF WM-14
 DWS. No.

FOR CONTINUATION SEE SHEET No. WM-09



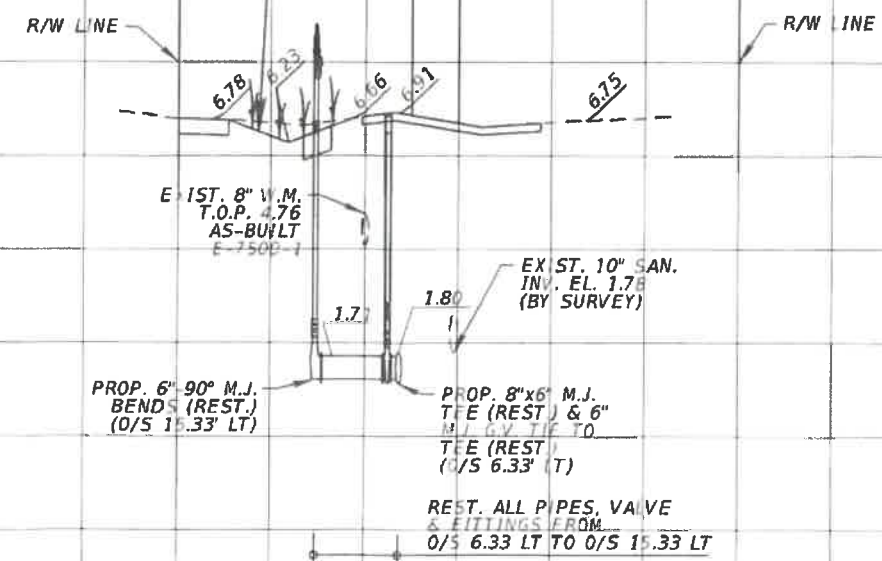
WATER & SEWER DEPARTMENT
 3071 SW 38TH AVENUE
 MIAMI, FL 33146-1520
 305-666-7471
 www.miamidade.gov/water

A&P Consulting
 Transportation
 Engineers Corp.
 10305 N.W. 41 Street, suite 115
 Miami, FL 33178
 305 592-7283 / fax:305 593-1594
 CA No. : EB-0007787
 Amelio Alfonso, P.E. No. 52566

INSTALLATION 8 INCH D.I. WATER MAIN
 IN S.W. 64th CT. FROM S.W. 8th ST. TO S.W. 6th ST.
 PCTS No. 14706, ER No. W-017009
 CITY OF MIAMI J.P.A. PROJECT No. B 50972
 PROP. FIRE HYDRANT PLAN & PROFILE

FOR CONTINUATION SEE SHEET No. WM-09

PROP. GRADE ALONG
 PROP. 6" D.I. W.M.



STA. 13+58.14
 PROP. FIRE HYDRANT

DRAWING HISTORY

RELEASED FOR	DATE	BY
REVIEW 60%	2/22/2017	A.A.
REVIEW 90%	3/30/2017	A.A.
SUBMITTAL 100%	5/15/2017	A.A.

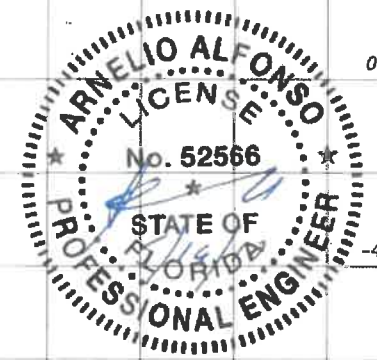
REVISIONS

No.	DESCRIPTION	DATE	BY

APPROVALS

PROJECT MGR:	B.T.	CHECKED:	A.A.
DESIGNED:	V.M.	DRAWN:	N.P.
CHIEF ENGINEER:			
SECTION HEAD:			
DESIGN MGR:			

Amelio Alfonso, P.E.
 Civil Engineer
 State of Florida - License No. 62566
 10305 NW 41 St Doral, Florida 33178
 (305) 592-7283
 Date: _____



FILE NAME:
 DATE: _____ SCALE: 1"=20'
 SHEET WM-11 OF WM-14
 DWG. No. _____

SCALE: 1"=20' HOR.
 1"=4' VERT.

INSTALLATION 8 INCH D.I. WATER MAIN
 IN S.W. 64TH CT. FROM S.W. 8TH ST. TO S.W. 6TH ST.
 PCTS No. 14706, ER No. W017009
 CITY OF MIAMI J.P.A. PROJECT No. B 50972
 TRAFFIC CONTROL PLAN GENERAL - NOTES

GENERAL NOTES

- TRAFFIC CONTROLS SHALL BE IN ACCORDANCE WITH THE PROJECT PLANS, THE CURRENT EDITION OF THE FLORIDA DOT DESIGN STANDARDS (600 SERIES), THE STANDARD SPECIFICATION FOR ROAD AND BRIDGE CONSTRUCTION, AND THE MANUAL ON UNIFORM TRAFFIC CONTROL DEVICES AS MINIMUM CRITERIA.
- THE CONTRACTOR SHALL IMMEDIATELY REPAIR ALL POTHOLES THAT DEVELOP WITHIN THE PROJECT LIMITS AND WILL MAINTAIN A SUPPLY OF COLD MIX ON THE PROJECT SITE TO EXPEDITE THOSE REPAIRS. COST OF REPAIR TO BE INCLUDED IN MAINTENANCE OF TRAFFIC.
- THE TRAFFIC AND TRAVEL WAYS SHALL NOT BE ALTERED BY THE CONTRACTOR TO CREATE A WORK ZONE UNTIL ALL LABOR AND MATERIAL ARE AVAILABLE FOR THE CONSTRUCTION IN THAT AREA.
- NOTIFICATION OF LANE CLOSURES OR TEMPORARY DETOURS SHALL BE ACCOMPLISHED 14 WORKING DAYS PRIOR TO CLOSURE, DETOUR OR MOT PHASE CHANGE BY SUBMITTING THE REQUIRED LANE CLOSURE FORM, SKETCHES, CALCULATIONS, AND OTHER DATA THROUGH THE ENGINEER TO THE FDOT DISTRICT/MDCPW TRAFFIC OPERATIONS OFFICE.
- AT THE DISCRETION OF THE FIELD ENGINEER, IF A LANE CLOSURE CAUSES EXTENDED CONGESTION OR DELAY, THE CONTRACTOR SHALL BE DIRECTED TO REOPEN THE CLOSED LANE(S) UNTIL SUCH TIME THAT THE TRAFFIC FLOW HAS RETURNED TO AN ACCEPTABLE LEVEL.
- REGULATORY SPEED ESTABLISHED WITHIN THE WORK ZONE TRAVEL WAYS SHALL BE 25 M.P.H. REDUCED SPEED AND REGULATORY SPEED SIGNS SHALL BE INSTALLED ON SEPARATE POSTS IN ACCORDANCE WITH THE STANDARD INDEXES.
- AS DETERMINED BY THE ENGINEER, THE CONTRACTOR SHALL COVER WORK ZONE SIGNS WHEN CONDITIONS NO LONGER WARRANT THEIR USE. COST OF COVERING AND UNCOVERING THE SIGNS SHALL BE INCLUDED IN MAINTENANCE OF TRAFFIC.
- CONTRACTOR SHALL REMOVE, RELOCATE OR COVER ANY EXISTING OR PROPOSED SIGNS THAT CONFLICT WITH THE TRAFFIC CONTROL PLANS. WHEN THE CONFLICT NO LONGER EXISTS, THE CONTRACTOR SHALL RESTORE THE SIGNS TO THEIR ORIGINAL POSITION. COST OF TEMPORARILY REMOVING, RELOCATING, COVERING AND RESTORING THE SIGNS SHALL BE INCLUDED IN MAINTENANCE OF TRAFFIC.
- THE CONTRACTOR SHALL NOT PROPOSE AN ALTERNATIVE TRAFFIC CONTROL PLAN THAT REDUCES THE NUMBER OF TRAVEL LANES SHOWN ON THE CONTRACT TRAFFIC CONTROL PLANS.
- ARROWS ON THE TRAFFIC CONTROL PLANS DENOTE THE DIRECTION OF TRAFFIC ONLY AND DO NOT REFLECT PAVEMENT MARKINGS UNLESS SPECIFICALLY NOTED.
- LANE CLOSURES SHALL NOT BE PERMITTED DURING SCHOOL SPEED ZONE HOURS WHERE SUCH CLOSURES WILL AFFECT TRAFFIC FLOW IN THE VICINITY OF THE SCHOOL SPEED ZONES.
- EACH EXISTING STREET NAME AND STOP SIGN AFFECTED BY CONSTRUCTION SHALL BE RELOCATED AND MAINTAINED IN AN APPROPRIATE LOCATION FOR THE DURATION OF THE PROJECT. WHEN NO LONGER AFFECTED BY CONSTRUCTION, THESE SIGNS SHALL BE RESTORED TO THEIR ORIGINAL POSITION. COST OF TEMPORARILY RELOCATING AND RESTORING THE SIGNS SHALL BE INCLUDED IN MAINTENANCE OF TRAFFIC.
- CONTRACTOR SHALL BE RESPONSIBLE FOR THE IMMEDIATE REMOVAL OF STORM WATER FROM ROADWAYS UTILIZED FOR MAINTAINING TRAFFIC IN A MANNER APPROVED BY THE ENGINEER. COST FOR REMOVING THE WATER SHALL BE INCLUDED IN MAINTENANCE OF TRAFFIC.
- USE METAL PLATES IF THE WORK ZONE IS INACTIVE.

DROP OFFS:

- FOR DROP OFFS, THE CONTRACTOR'S ATTENTION IS DIRECTED TO STANDARD INDEX NO. 600, SHEET 10 OF 13. THE CONTRACTOR SHALL USE SHOULDER TREATMENT DETAIL WHEN NO BARRIERS ARE REQUIRED IN THE PLANS. COST TO BE INCLUDED IN MAINTENANCE OF TRAFFIC.

SIGNALS:

- CONTRACTOR SHALL NOTIFY MIAMI DADE COUNTY SIGNS AND SIGNALS DIVISION LOCATED AT 7100 N.W. 36th STREET MIAMI, FLORIDA 33166 AND PHONE NO. (305) 592-3470, 48 HOURS PRIOR TO ANY MODIFICATION OF AN EXISTING TRAFFIC SIGNAL SYSTEM. THE CONTRACTOR SHALL HAVE FULL RESPONSIBILITY FOR THE MAINTENANCE OF THE EXISTING OR TEMPORARY TRAFFIC SIGNAL(S) WITHIN THE PROJECT LIMITS. COST OF RELOCATING TRAFFIC SIGNAL HEADS, PROVIDING AND REMOVING TEMPORARY SIGNALS, AND MAINTAINING THE EXISTING OR TEMPORARY TRAFFIC SIGNALS SHALL BE INCLUDED IN MAINTENANCE OF TRAFFIC.
- THE CONTRACTOR SHALL MAINTAIN ONLINE COMMUNICATION OF EXISTING OR TEMPORARY SIGNALIZATION VIA INTERCONNECT OR PHONE LINE DURING CONSTRUCTION. CONTRACTORS SHALL PROVIDE TEMPORARY LINES AND CONNECTIONS IF NECESSARY. COST OF ESTIMATING COMMUNICATION, INCLUDING TEMPORARY LINES AND CONNECTIONS SHALL BE INCLUDED IN MAINTENANCE OF TRAFFIC.

WORK ZONE LIMITS:

- THE LENGTH OF AN OPEN TRENCH SHALL NOT EXCEED 300 FT. PROPERTY ACCESS SHALL BE MAINTAINED IN ACCORDANCE TO ARTICLE 102-5.5 OF THE FDOT STANDARD SPECIFICATIONS FOR ROAD AND BRIDGE CONSTRUCTION.








INTERSECTIONS:

- ADJACENT INTERSECTIONS SHALL NOT BE CONSTRUCTED SIMULTANEOUSLY UNLESS DIRECTED BY THE FIELD ENGINEER.
- INTERSECTIONS SHALL BE RECONSTRUCTED WORKING ON A CONTINUOUS DAILY BASIS UNTIL COMPLETE AND UNTIL THE STRUCTURAL COURSE IS PLACED.
- WORK AT MAJOR INTERSECTIONS SHALL BE DONE CONTINUOUSLY UNTIL THE ROAD HAS BEEN PAVED AND DROP OFFS SAFELY SLOPED.
- TRANSITIONS AND TEMPORARY INTERSECTION CROSSOVERS WHERE CONSTRUCTION HAS CAUSED GRADE DIFFERENCES BETWEEN THE EXISTING AND NEW ROADWAYS SHALL BE CONSTRUCTED USING A 1:20 TYPE S ASPHALT CONCRETE SLOPE TO ACCOMMODATE VEHICULAR TRAFFIC FROM ANY DIRECTION. ALL MATERIAL AND WORK, INCLUDING ITS REMOVAL, SHALL BE INCLUDED IN MAINTENANCE OF TRAFFIC.

PEDESTRIAN, BICYCLES AND WHEELCHAIRS:

- AT THE END OF EACH WORK DAY OR WHENEVER THE WORK ZONE BECOMES INACTIVE, ANY DROP OFF ADJACENT TO THE PEDESTRIAN, BICYCLE, AND WHEELCHAIR TRAVEL PATHS SHALL BE BACKFILLED FLUSH WITH THE SAID PATHS OR PROTECTED WITH BARRICADES, TEMPORARY CONCRETE BARRIER WALL, OR APPROVED HANDRAIL. THE COST OF BACKFILLING AND/OR USE OF OTHER METHODS TO PROTECT THE PEDESTRIAN, BICYCLE AND WHEELCHAIR TRAVEL PATHS SHALL BE INCLUDED IN MAINTENANCE OF TRAFFIC.
- PEDESTRIAN, BICYCLE, AND WHEELCHAIR TRAFFIC SHALL BE MAINTAINED AND GUIDED USING APPROVED WARNING LIGHTS, SIGNING, AND DELINEATION DEVICES ON AT LEAST ONE SIDE OF THE PROJECT AT ALL TIMES THROUGHOUT THE PROJECT LIMITS. THE TRAVEL PATH SHALL BE A MINIMUM OF 4 FT (1.2 METERS) WIDE WITH A SMOOTH SURFACE THAT IS NOT SLICK AND IT SHOULD BE RAMPED AS NECESSARY FOR CONTINUITY. COST TO CONSTRUCT AND MAINTAIN THE TRAVEL PATH AS REQUIRED SHALL BE INCLUDED IN MAINTENANCE OF TRAFFIC

LEGEND:

-  TYPE III BARRICADE OR VERTICAL PANEL OR DRUM (WITH FLASHING LIGHT AT NIGHT ONLY)
-  TYPE I OR TYPE II BARRICADE OR VERTICAL PANEL OR DRUM (WITH STEADY BURNING LIGHT AT NIGHT ONLY)
-  ADVANCE WARNING ARROW BOARD
-  WORK AREA
-  WORK ZONE SIGN
-  LANE IDENTIFICATION AND DIRECTION OF TRAFFIC
-  LONGITUDINAL CHANNELIZING DEVICE

DRAWING HISTORY

RELEASED FOR	DATE	BY
REVIEW 60%	02/22/17	A.A.
REVIEW 90%	03/30/17	A.A.
SUBMITTAL 100%	05/23/17	A.A.

REVISIONS

No.	DESCRIPTION	DATE	BY

APPROVALS

PROJECT MGR: B.T. CHECKED: A.A.

DESIGNER: P.

DESIGN MGR: No. 67358

DATE: 5/15/17

STATE OF FLORIDA PROFESSIONAL ENGINEER

FILE NAME:

DATE:

SCALE:

SHEET WM-12 OF WM-14

DWG. No.

WATER & SEWER DEPARTMENT
 3071 SW 38TH AVENUE
 MIAMI, FL 33146-1520
 305-665-7471
 www.miamidade.gov/water

A&P Consulting Transportation Engineers Corp.
 10305 N.W. 41 Street, suite 115
 Miami, FL 33178
 305 592-7283 / fax:305 593-1594
 CA No. : EB-0007797
 Arnello Alfonso, P.E. No. 52566

INSTALLATION 8 INCH DI WATER MAIN
 IN S.W. 64TH CT. FROM S.W. 8TH ST. TO S.W. 6TH ST.
 PCTS No. 14706, ER No. W017009
 CITY OF MIAMI J.P.A. PROJECT No. B 50972

TRAFFIC CONTROL PLAN - MOT

DRAWING HISTORY

RELEASED FOR	DATE	BY
REVIEW 60%	02/22/17	A.A.
REVIEW 90%	03/30/17	A.A.
SUBMITTAL 100%	05/23/17	A.A.

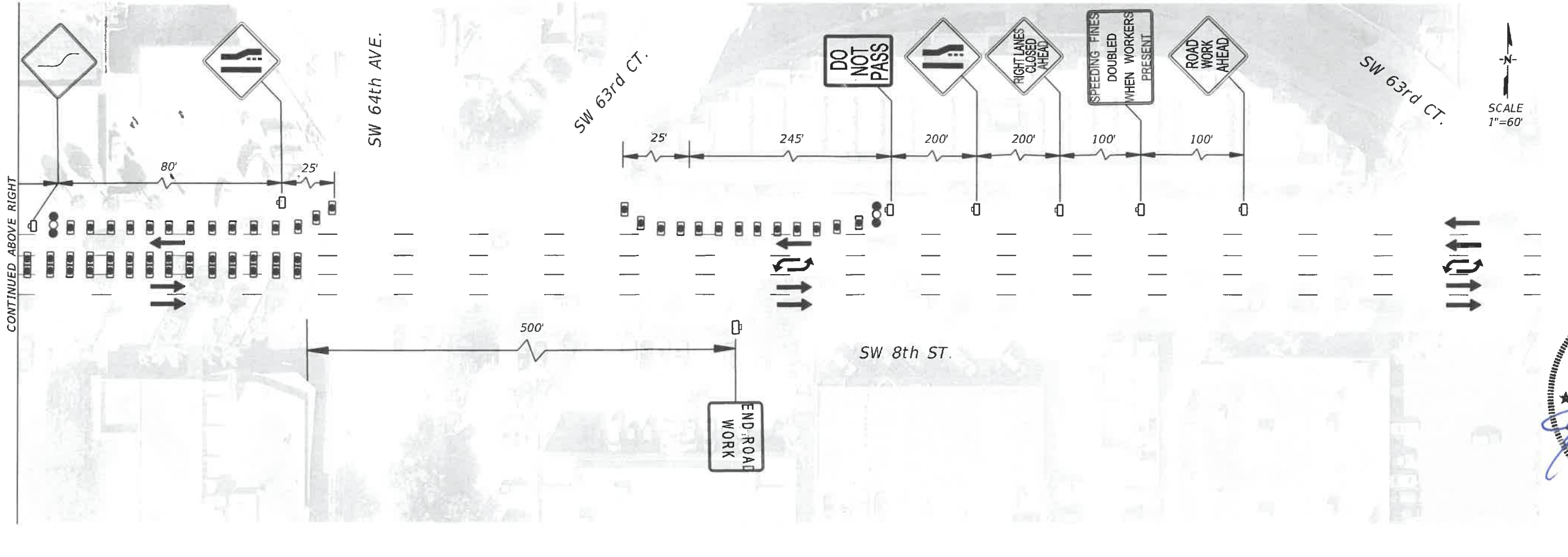
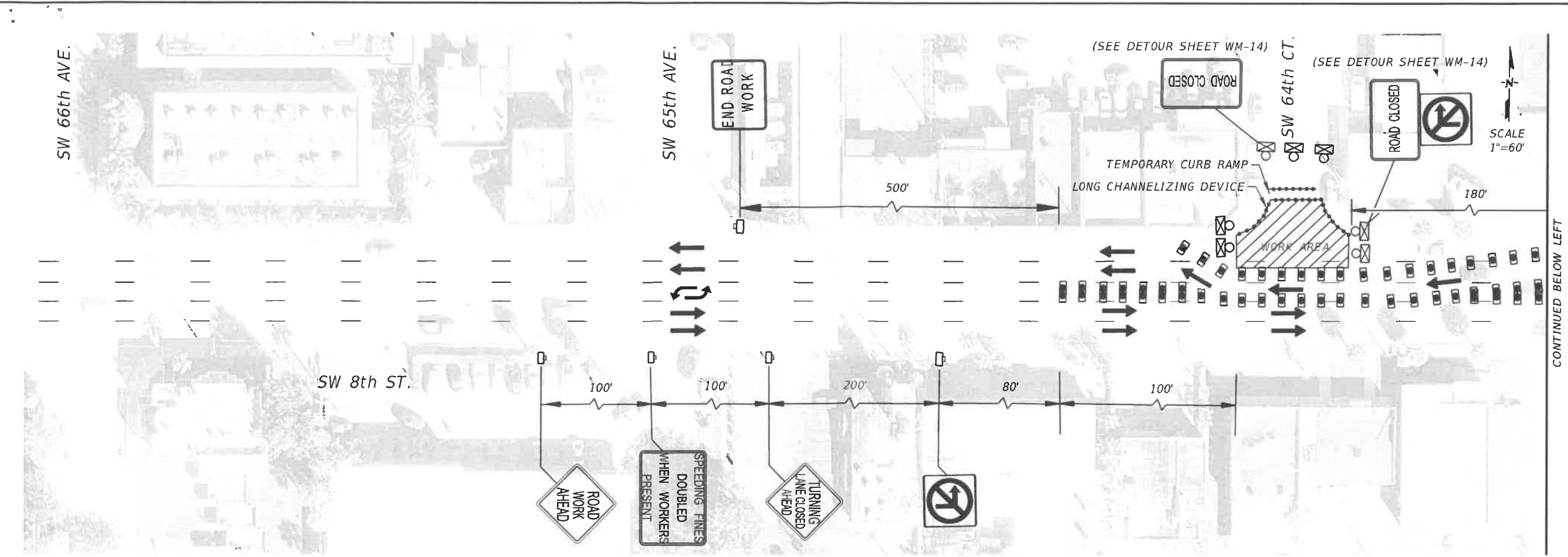
REVISIONS

No.	DESCRIPTION	DATE	BY

APPROVALS

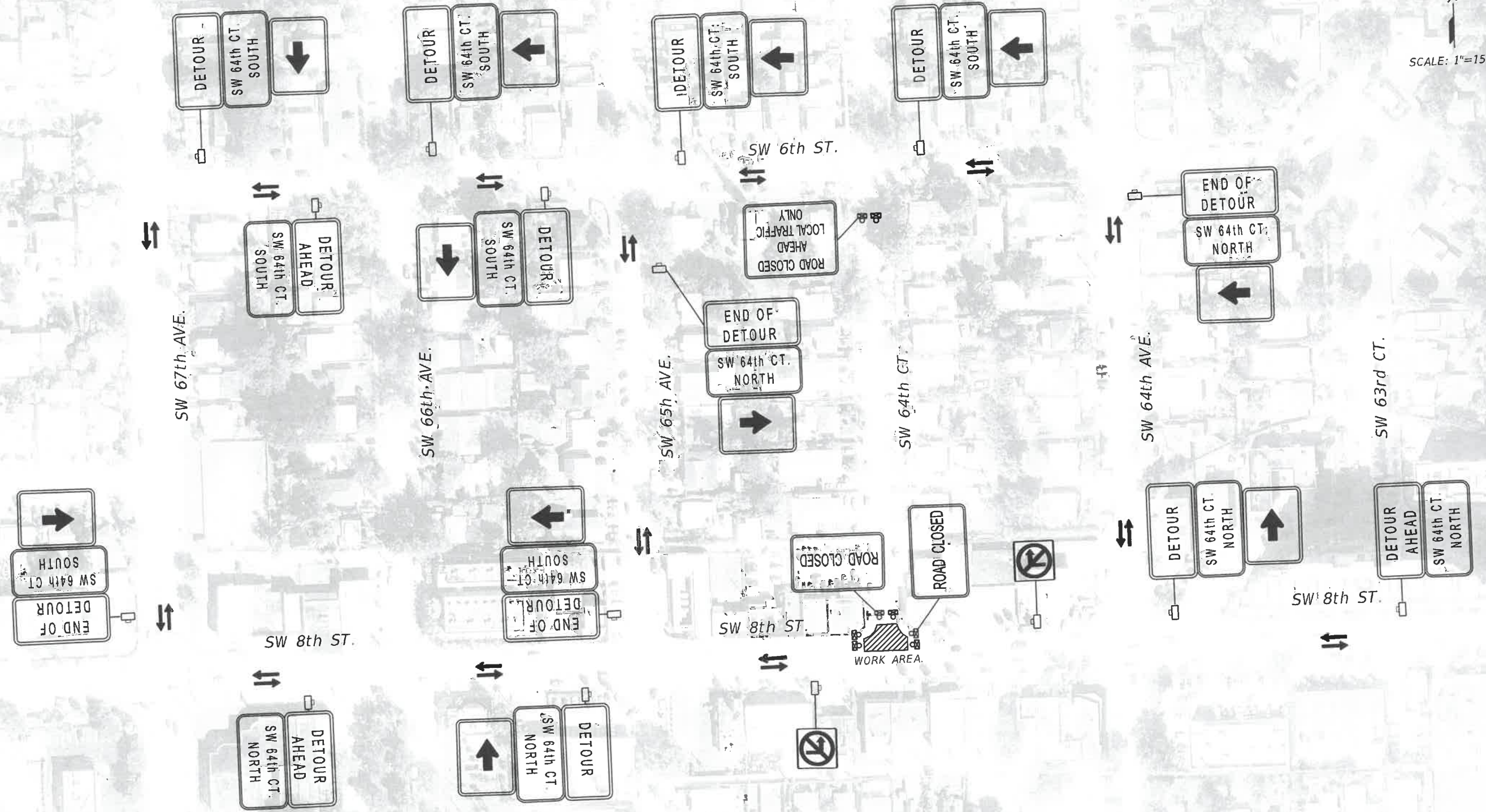
PROJECT MGR: B.T. CHECKED: A.A.
 DESIGN MGR: [Signature] P.E.
 DESIGN MGR.: [Signature] P.E.
 No. 67358
 Civil Engineer
 State of Florida License No. 67358
 10305 NW 41 ST Doral, Florida 33178
 (305) 592-7283
 FLORIDA PROFESSIONAL ENGINEER

DATE: SCALE:
 SHEET WM-13 OF WM-14
 DWG. No.



WATER & SEWER DEPARTMENT
 3071 SW 38TH AVENUE
 MIAMI, FL 33146-1520
 305-665-7471
 www.miamidade.gov/water

A&P Consulting Transportation Engineers Corp.
 10305 N.W. 41 Street, suite 115
 Miami, FL 33178
 305 592-7283 / fax: 305 593-1594
 CA No. : EB-0007797
 Arnello Alfonso, P.E. No. 52566



INSTALLATION 8 INCH D.I. WATER MAIN
 IN S.W. 64TH CT. FROM S.W. 8TH ST. TO S.W. 6TH ST.
 PCTS No. 14706, ER No. W017009
 CITY OF MIAMI J.P.A. PROJECT No. B 30972
 TRAFFIC CONTROL PLAN - DETOUR

DRAWING HISTORY

RELEASED FOR	DATE	BY
REVIEW 60%	02/22/17	AA
REVIEW 90%	03/30/17	AA
SUBMITTAL 100%	05/23/17	AA

REVISIONS

No	DESCRIPTION	DATE	BY

APPROVALS
 PROJECT MGR: B.T. CHECKED: AA
 DESIGNED: V.M. DRAWN: N.P.



DATE: SCALE:
 SHEET WM-14 OF WM-14
 DWG. No.