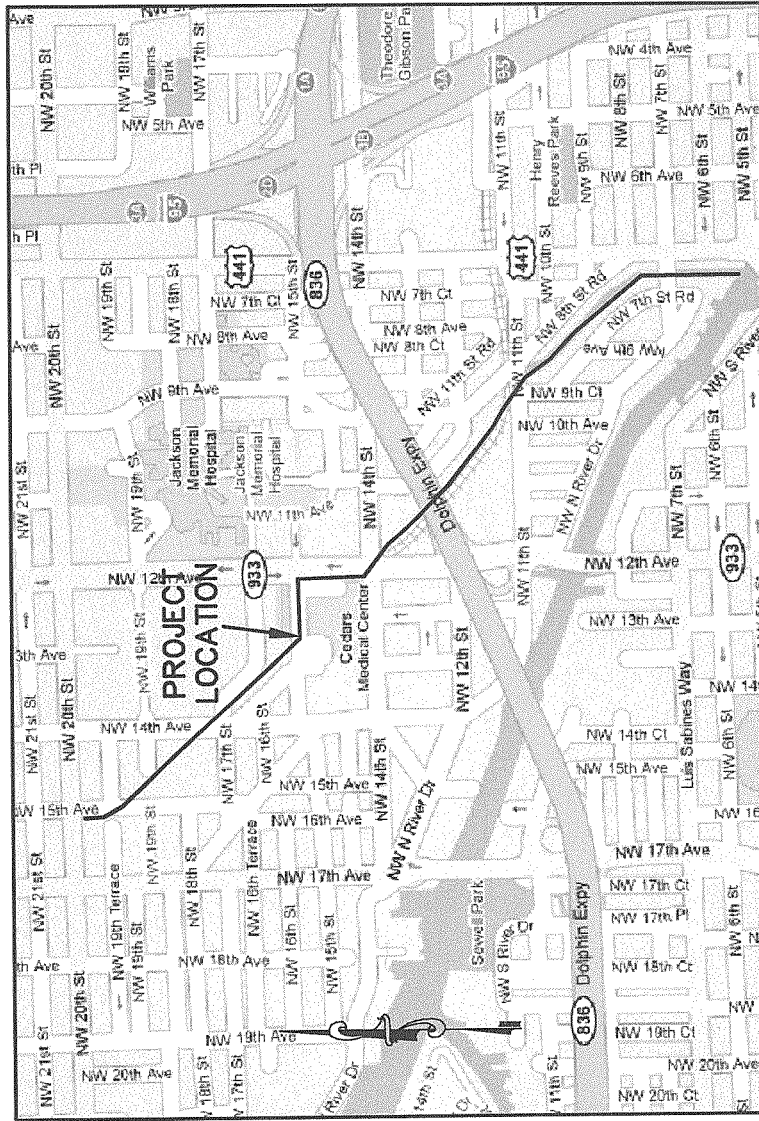


MAP SHOWING A HYDROGRAPHIC & TOPOGRAPHIC SURVEY OF:

WAGNER CREEK & SEYBOLD CANAL

DADE COUNTY, FLORIDA

FOR: CH2MHILL



VICINITY MAP
NOT TO SCALE

US ARMY
CORPS OF ENGINEERS
JUL 19 2011
MIAMI REGULATORY OFFICE

- OPERATIONAL SECTION 1
- SHEETS 2-5
- OPERATIONAL SECTION 2
- SHEETS 5-7
- OPERATIONAL SECTION 3
- SHEETS 7-11
- OPERATIONAL SECTION 4
- SHEETS 11-13
- OPERATIONAL SECTION 5
- SHEETS 13-17
- OPERATIONAL SECTION 6
- SHEETS 17-23

LEGEND/ABBREVIATIONS			
☐	TRAFFIC CONTROL BOX	⊖	DEBRIS LOCATION
☐	CABLE BOX	⊖	DEBRIS LOCATION
☐	ELECTRIC BOX	⊖	DEBRIS LOCATION
☐	TELEPHONE MANHOLE	⊖	DEBRIS LOCATION
☐	ELECTRIC MANHOLE	⊖	DEBRIS LOCATION
☐	DRAINAGE MANHOLE	⊖	DEBRIS LOCATION
☐	SPRINKLER	⊖	DEBRIS LOCATION
☐	SECURITY CAMERA	⊖	DEBRIS LOCATION
☐	CONTROL VALVE	⊖	DEBRIS LOCATION
☐	WATER VALVE	⊖	DEBRIS LOCATION
☐	ELECTRIC METER	⊖	DEBRIS LOCATION
☐	FIRE HYDRANT	⊖	DEBRIS LOCATION
☐	IRIG	⊖	DEBRIS LOCATION
☐	IR	⊖	DEBRIS LOCATION
☐	TOP OF BANK	⊖	DEBRIS LOCATION
☐	CHAIN LINK FENCE	⊖	DEBRIS LOCATION
☐	CONCRETE PIPE	⊖	DEBRIS LOCATION
☐	CONCRETE PIPE	⊖	DEBRIS LOCATION
☐	PVC	⊖	DEBRIS LOCATION
☐	M/H	⊖	DEBRIS LOCATION
☐	H/W	⊖	DEBRIS LOCATION
☐	HEAD WALL	⊖	DEBRIS LOCATION
☐	INVERT	⊖	DEBRIS LOCATION
☐	MITERED END SECTION	⊖	DEBRIS LOCATION
☐	CONCRETE MON.	⊖	DEBRIS LOCATION
☐	CONC.	⊖	DEBRIS LOCATION
☐	MON.	⊖	DEBRIS LOCATION

SURVEY NOTES:

- ALL DIMENSIONS SHOWN HEREON ARE IN FEET AND IN TENTHS AND ARE BASED ON THE U.S. SURVEY FOOT.
- ABOVE GROUND EVIDENCE OF UNDERGROUND FEATURES (I.E. UTILITIES TANKS, RAILROAD TRACKS, ETC.) ARE SHOWN HEREON ON THE SURROUNDING PARCELS AS MARKED BY SURVIVOR STATE ONE CALL UTILITY LOCATING SERVICE.
- PARCEL BOUNDARY LOCATIONS AND SOME MINOR PLANNING INFORMATION WAS OBTAINED FROM A PREVIOUS SURVEY BY WEDGNER SURVEYING AND MAPPING, DATED: JUNE 12, 2002.
- SURVEY FIELD DATA WAS OBTAINED FROM JUNE 23, 2008 THRU JULY 17, 2008.
- BACKGROUND IMAGERY WAS OBTAINED FROM GOOGLE EARTH AND IS FOR REFERENCE PURPOSES ONLY.
- BATHYMETRIC DATA WAS OBTAINED WITH A TRIMBLE 5600 REAL TIME KINEMATIC GPS SURVEYING SYSTEM.
- COORDINATES SHOWN HEREON ARE BASED ON A CITY OF MIAMI BENCHMARK LOCATED AT THE SOUTHWEST CORNER OF NW 15th ST AND NW 11th ST. THE COORDINATE SYSTEM IS FLORIDA STATE NORTH ZONE, NORTH AMERICAN DATUM OF 1983 (NAD83).
- ELEVATIONS SHOWN HEREON ARE BASED ON A CITY OF MIAMI BENCHMARK LOCATED AT THE SOUTHWEST CORNER OF NW 15th ST AND NW 11th ST. THE BENCHMARK IS REFERENCED TO THE NATIONAL GEODETIC VERTICAL DATUM OF 1929 (NGVD29).
- THE BIOLOGICAL LOCATIONS TRACK LOCATIONS, DEBRIS LOCATIONS, AND STRUCTURE FIRM OF MILAN, SWAIN & ASSOCIATES, 2257 VISTA PARKWAY, SUITE #19, WEST PALM BEACH, FLORIDA, 33411, INFORMATION REQUESTS IN REGARD TO THESE LOCATIONS SHOULD BE DIRECTED TO MILAN, SWAIN & ASSOCIATES.
- THE PROPOSED DREDGE CUT LINES AND GRADES SHOWN ON THESE CROSS-SECTIONS ARE TO BE FIELD VERIFIED IN ORDER TO REMOVE THE MAXIMUM EXTENT OF SEDIMENT POSSIBLE WITHOUT COMPROMISING STRUCTURES LOCATED ADJACENT TO OR WITHIN THE DESIGNATED WORK AREA.
- WAGNER CREEK AND SEYBOLD CANAL ARE TIDAL WATERS AND THEREFORE TITLE TO THE LANDS BELOW THE MEAN HIGH WATER LINE, ELEVATION 1.88 NGVD29, IS VESTED IN THE BOARD OF TRUSTEES OF THE INTERNAL IMPROVEMENT TRUST FUND OF THE STATE OF FLORIDA.

SHEET 1 OF 23

ARC SURVEYING & MAPPING, INC.



5202 SAN JUAN AVENUE,
JACKSONVILLE, FLORIDA 32210
PHONE: 904/384-8377
LICENSED BUSINESS NO. 6487

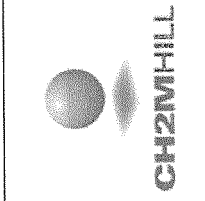
DRAWN BY: JKM DATE: 11-14-08 FIELD BOOK & PAGE: 08-08/08-09 JOB NO: 07-10-07

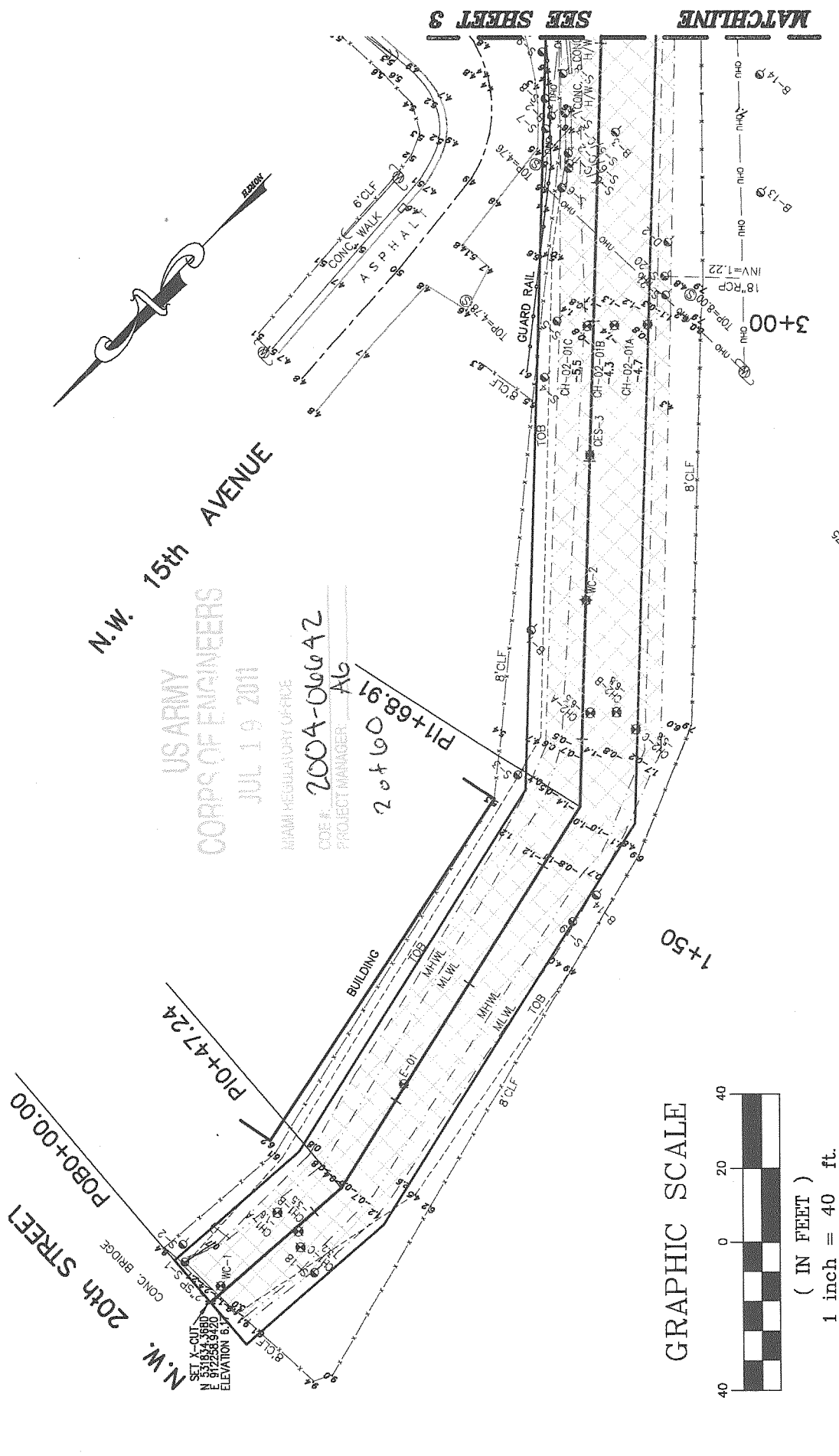
CERTIFICATION: 2001-10642

I HEREBY CERTIFY THAT THE INFORMATION PROVIDED HEREON IS TRUE AND COMPLETE AND MEETS THE MINIMUM TECHNICAL STANDARDS AS ESTABLISHED BY THE BOARD OF PROFESSIONAL SURVEYORS AND MAPPERS IN CHAPTER 61G17-9 OF THE FLORIDA ADMINISTRATIVE CODE, PURSUANT TO CHAPTER 472 OF THE FLORIDA STATUTES.

MITCHELL R. JARRELLS
FLORIDA REGISTERED CERTIFICATE NO. 6438

DADE COUNTY, FLORIDA
WAGNER CREEK & SEYBOLD CANAL
MIAMI, FLORIDA





N.W. 15th AVENUE

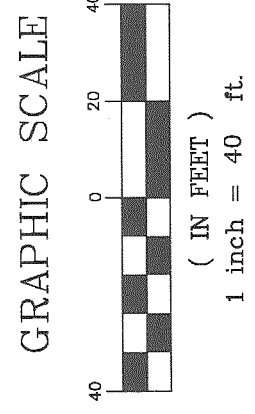
US ARMY
CORPS OF ENGINEERS

JUL 19 2011

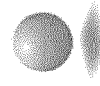
MIAMI REGULATORY OFFICE
CODE # 2004-06642
PROJECT MANAGER: AG

2 x 60 16.91

N.W. 20th STREET
CONC. BRIDGE
SET X-CUT
N 53°18'34.36" E
E 87°25'31.42" S
ELEVATION 6.17



DENOTES DREDGE LIMITS



CH2MHILL

DADE COUNTY, FLORIDA
WAGNER CREEK &
SEYBOLD CANAL
MIAMI, FLORIDA

CERTIFICATION:

I HEREBY CERTIFY THAT THE INFORMATION DEPICTED HEREON IS TRUE AND COMPLETE AND MEETS THE MINIMUM TECHNICAL STANDARDS AS ESTABLISHED BY THE BOARD OF PROFESSIONAL SURVEYORS AND MAPPERS IN CHAPTER 61G17-8 OF THE FLORIDA ADMINISTRATIVE CODE, PURSUANT TO CHAPTER 472 OF THE FLORIDA STATUTES.

MITCHELL R. JARRELLS
FLORIDA REGISTERED CERTIFICATE NO. 643B

OPERATIONAL SECTION 1 SHEET 2 OF 23

ARC SURVEYING & MAPPING, INC.

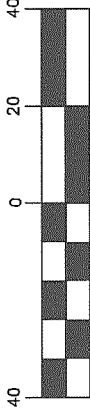
5202 SAN JUAN AVENUE,
JACKSONVILLE, FLORIDA 32210
PHONE: 904/384-8377
LICENSED BUSINESS NO. 6487

DRAWN BY: JKM DATE: 11-14-08 FIELD BOOK & PAGE JOB NO. 08-08/08-09 07-10-07

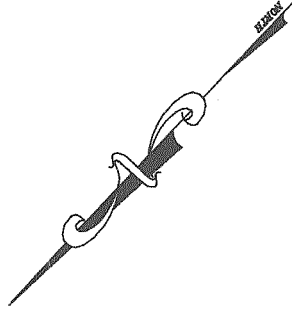
A-08-29

19th TERRACE

GRAPHIC SCALE



(IN FEET)
1 inch = 40 ft.



SEE SHEET 2

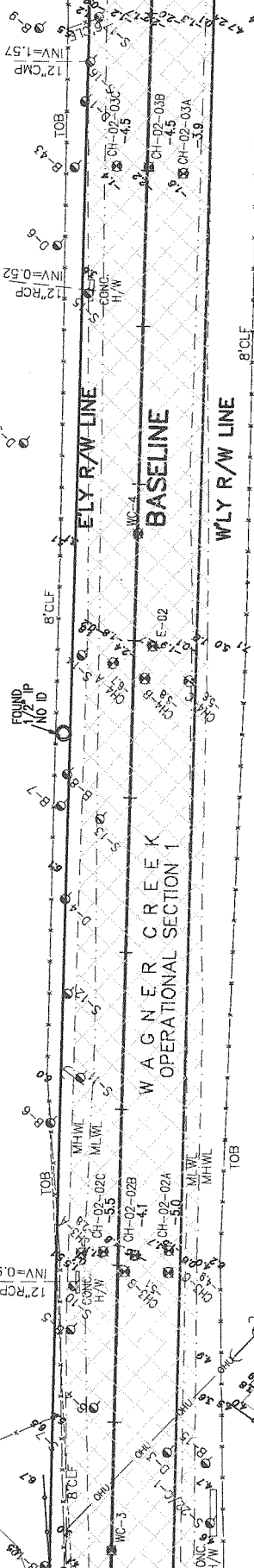
SEE SHEET 4

MATCHLINE

MATCHLINE

00+9

7+50



WAGNER CREEK
OPERATIONAL SECTION 1

US ARMY
CORPS OF ENGINEERS

JUL 19 2011

MIAMI REGULATORY OFFICE

CODE # 2004-06642

PROJECT MANAGER AB

3 of 60

OPERATIONAL SECTION 1 SHEET 3 OF 23

ARC SURVEYING & MAPPING, INC.

5202 SAN JUAN AVENUE,
JACKSONVILLE, FLORIDA 32210
PHONE: 904/384-8377
LICENSED BUSINESS NO. 6487

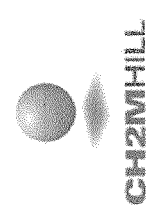


CERTIFICATION:
I HEREBY CERTIFY THAT THE INFORMATION DEPICTED HEREON IS TRUE AND CORRECT AND MEETS THE MINIMUM TECHNICAL STANDARDS AS ESTABLISHED BY THE BOARD OF PROFESSIONAL SURVEYORS AND MAPPERS IN CHAPTER 61G17-6 OF THE FLORIDA ADMINISTRATIVE CODE, PURSUANT TO CHAPTER 472 OF THE FLORIDA STATUTES.

MITCHELL R. JARRELLS
FLORIDA REGISTERED CERTIFICATE NO. 6438

ARC SURVEYING & MAPPING, INC.
5202 SAN JUAN AVENUE,
JACKSONVILLE, FLORIDA 32210
PHONE: 904/384-8377
LICENSED BUSINESS NO. 6487

DADE COUNTY, FLORIDA
WAGNER CREEK &
SEYBOLD CANAL
MIAMI, FLORIDA



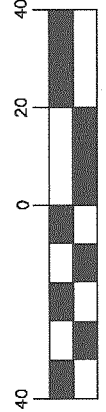
DENOTES DREDGE LIMITS

DRAWN BY: JKM DATE: 11-14-08 FIELD BOOK & PAGE 08-08/08-09 JOB NO. 07-10-07

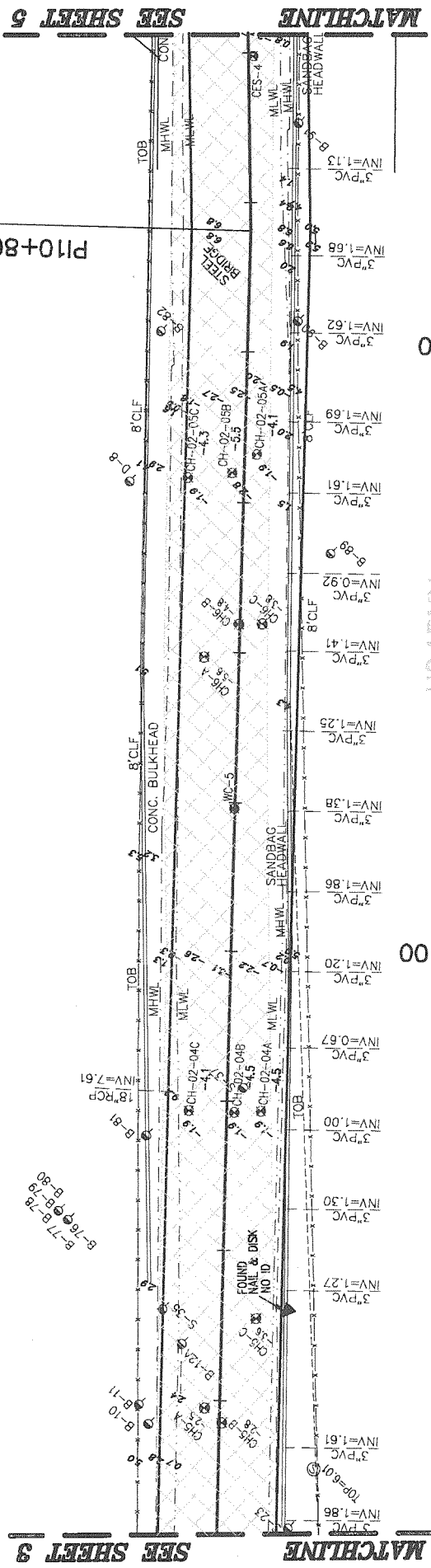
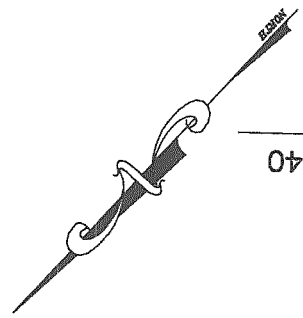
A-08-29

N.W. 19th STREET

GRAPHIC SCALE



(IN FEET)
1 inch = 40 ft.



SEE SHEET 5

MATCHLINE

SEE SHEET 3

MATCHLINE

10+50

9+00

US ARMY
CORPS OF ENGINEERS

JUL 19 2011

MIAMI REGULATORY OFFICE

COE # 2004-06642

PROJECT MANAGER AB

4 of 60

OPERATIONAL SECTION 1 SHEET 4 OF 23

ARC SURVEYING & MAPPING, INC.
5202 SAN JUAN AVENUE,
JACKSONVILLE, FLORIDA 32210
PHONE: 904/384-8377
LICENSED BUSINESS NO. 6487

ARC

DRAWN BY: JKM DATE: 11-14-08 FIELD BOOK & PAGE: 08-06/08-09 JOB NO.: 07-10-07

CERTIFICATION:
I HEREBY CERTIFY THAT THE INFORMATION DEPICTED HEREON IS TRUE AND COMPLETE AND MEETS THE MINIMUM TECHNICAL STANDARDS AS ESTABLISHED BY THE BOARD OF PROFESSIONAL SURVEYORS AND MAPPERS IN CHAPTER 61G17-6 OF THE FLORIDA ADMINISTRATIVE CODE, PURSUANT TO CHAPTER 472 OF THE FLORIDA STATUTES.

MITCHELL R. JARRELLS
FLORIDA REGISTERED CERTIFICATE NO. 6438

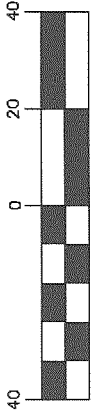
DADE COUNTY, FLORIDA
WAGNER CREEK & SEYBOLD CANAL
MIAMI, FLORIDA

CH2MHILL



DENOTES DREDGE LIMITS

GRAPHIC SCALE



(IN FEET)
1 inch = 40 ft.

N.W. 14th AVENUE
US ARMY
CORPS OF ENGINEERS
JUL 19 2011
MIAMI REGULATORY OFFICE

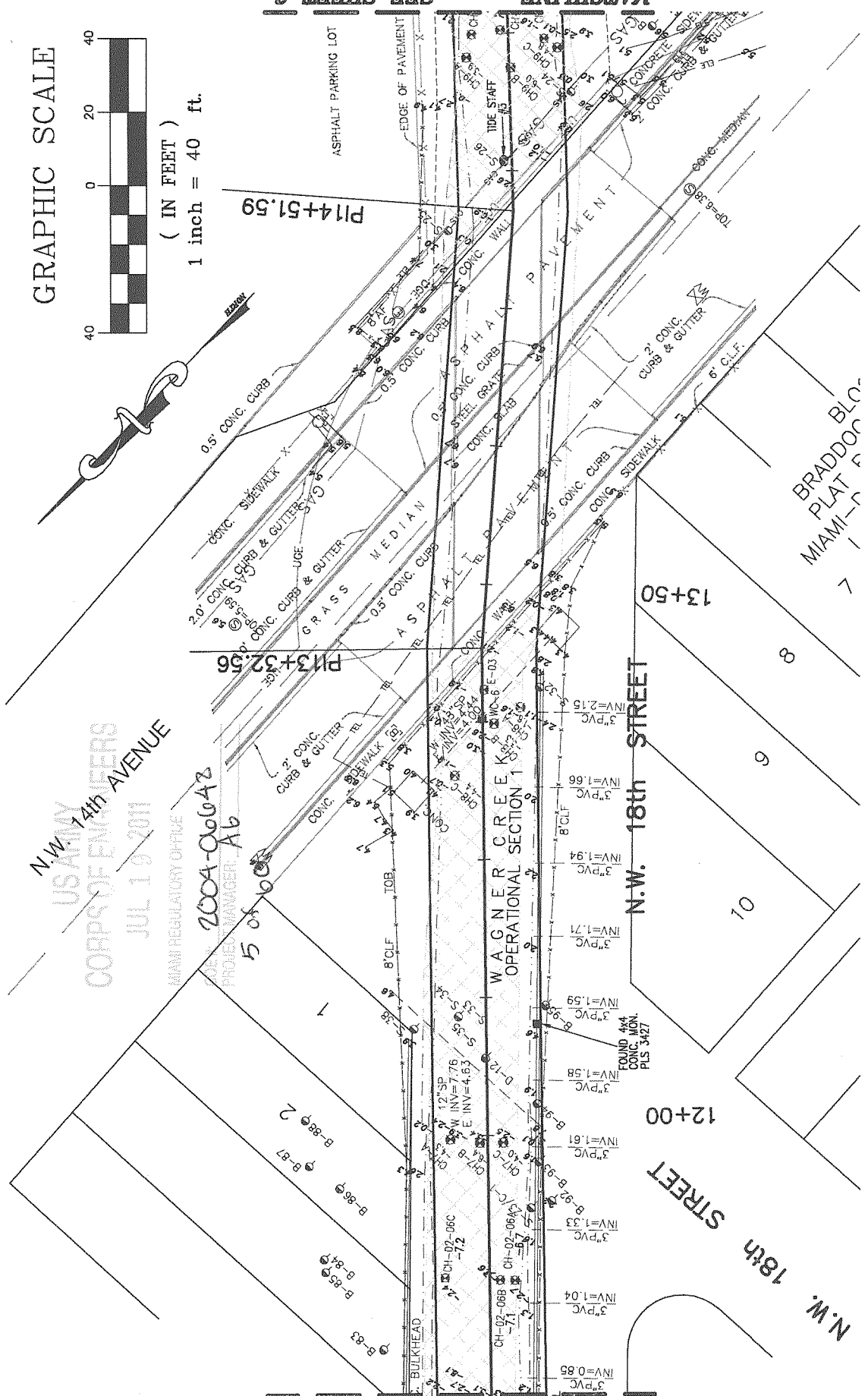
2004-06042
PROJECT MANAGER
5 of 10

SEE SHEET 4

SEE SHEET 6

MATCHLINE

MATCHLINE



OPERATIONAL SECTION 1 & 2 SHEET 5 OF 23

ARC SURVEYING & MAPPING, INC.

5202 SAN JUAN AVENUE,
JACKSONVILLE, FLORIDA 32210
PHONE: 904/364-8377
LICENSED BUSINESS NO. 6487



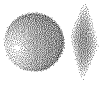
DRAWN BY: JKM DATE: 11-14-08
FIELD BOOK & PAGE: 08-08/08-09 JOB NO.: 07-10-07

CERTIFICATION:

I HEREBY CERTIFY THAT THE INFORMATION DEPICTED HEREON IS TRUE AND COMPLETE AND MEETS THE MINIMUM TECHNICAL STANDARDS AS ESTABLISHED BY THE BOARD OF PROFESSIONAL SURVEYORS AND MAPPERS IN CHAPTER 61G17-5 OF THE FLORIDA ADMINISTRATIVE CODE, PURSUANT TO CHAPTER 472 OF THE FLORIDA STATUTES.

MITCHELL R. JARRELLS
FLORIDA REGISTERED CERTIFICATE NO. 6438

DADE COUNTY, FLORIDA
WAGNER CREEK &
SEYBOLD CANAL
MIAMI, FLORIDA



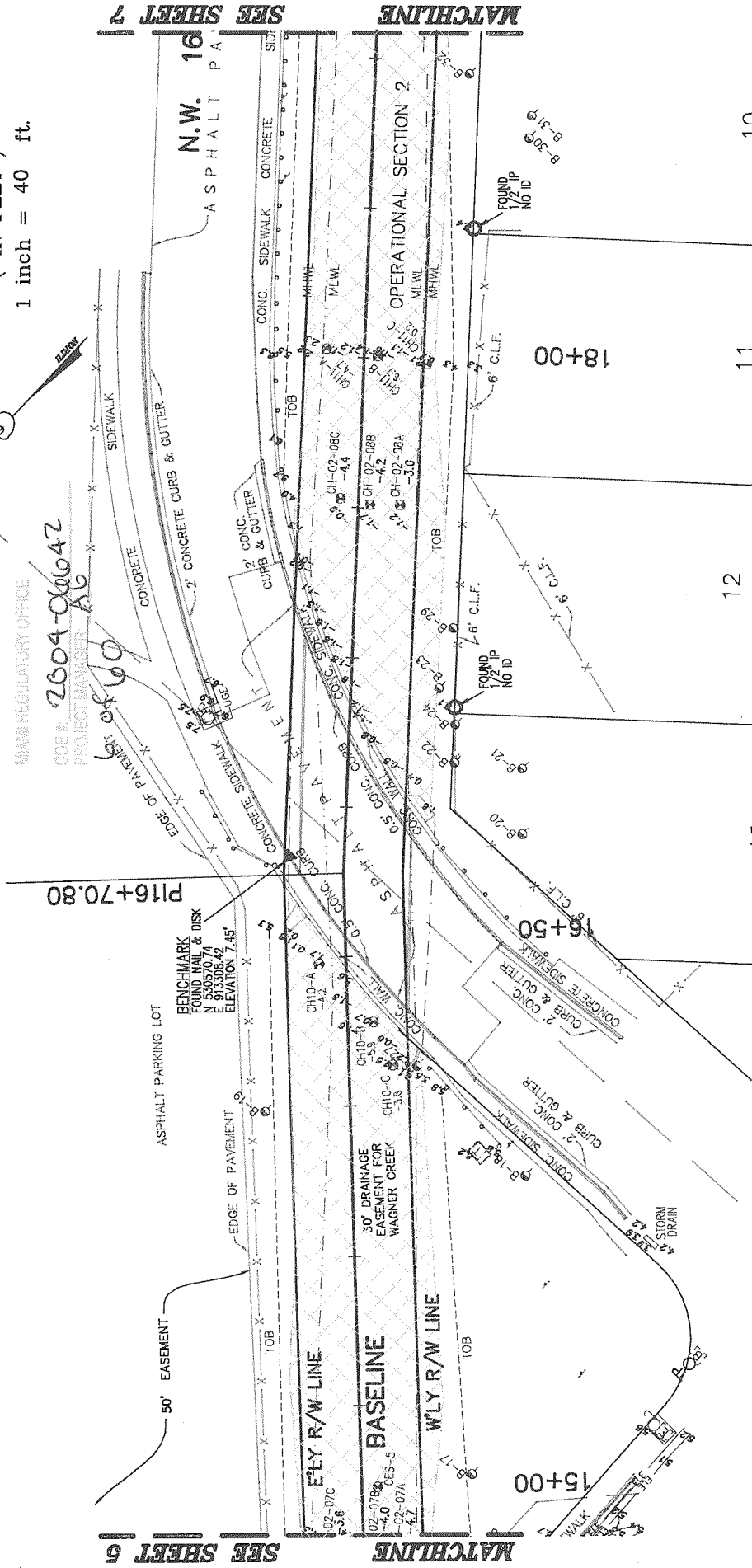
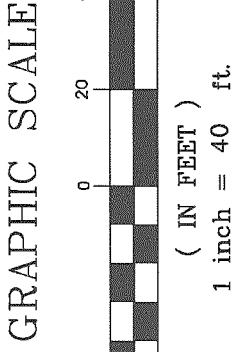
CH2MHILL



DENOTES DREDGE LIMITS

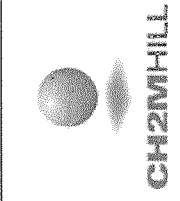
DADE COUNTY TO US GOVERNMENT
 OFFICIAL RECORDS BOOK 2612, PAGES 455 & 456
 MIAMI-DADE COUNTY RECORDS

US ARMY
 CORPS OF ENGINEERS
 JUL 19 2011
 MIAMI REGULATORY OFFICE
 COE # 2604-06042
 PROJECT MANAGER
 AG



SEE SHEET 5

SEE SHEET 7



DADE COUNTY, FLORIDA
 WAGNER CREEK &
 SEYBOLD CANAL
 MIAMI, FLORIDA



CH2MHILL
 DENOTES DRENCH LIMITS

CERTIFICATION:

I HEREBY CERTIFY THAT THE INFORMATION DEPICTED HEREON IS TRUE AND COMPLETE AND MEETS THE MINIMUM TECHNICAL STANDARDS AS ESTABLISHED BY THE BOARD OF PROFESSIONAL SURVEYORS AND MAPPERS IN CHAPTER 61G17-6 OF THE FLORIDA ADMINISTRATIVE CODE, PURSUANT TO CHAPTER 472 OF THE FLORIDA STATUTES.

MITCHELL R. JARRELLS
 FLORIDA REGISTERED CERTIFICATE NO. 6438

ARC SURVEYING & MAPPING, INC.

5202 SAN JUAN AVENUE
 JACKSONVILLE, FLORIDA 32210
 PHONE: 904/384-8377
 LICENSED BUSINESS NO. 6487

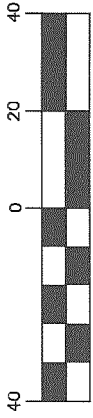


DRAWN BY: JKM DATE: 11-14-08
 FIELD BOOK & PAGE: 08-06/08-09
 JOB NO.: 07-10-07

OPERATIONAL SECTION 2 SHEET 6 OF 23

A-08-29

GRAPHIC SCALE



(IN FEET)

1 inch = 40 ft.

USARMY
CORPS OF ENGINEERS
JUL 19 2011
MIAMI REGULATORY OFFICE

DOE # 2004-0664Z
PROJECT MANAGER AG
7 of 60

BENCHMARK
FOUND NAIL & DISK
N 530271.52
E 819627.73
ELEVATION 7.25'

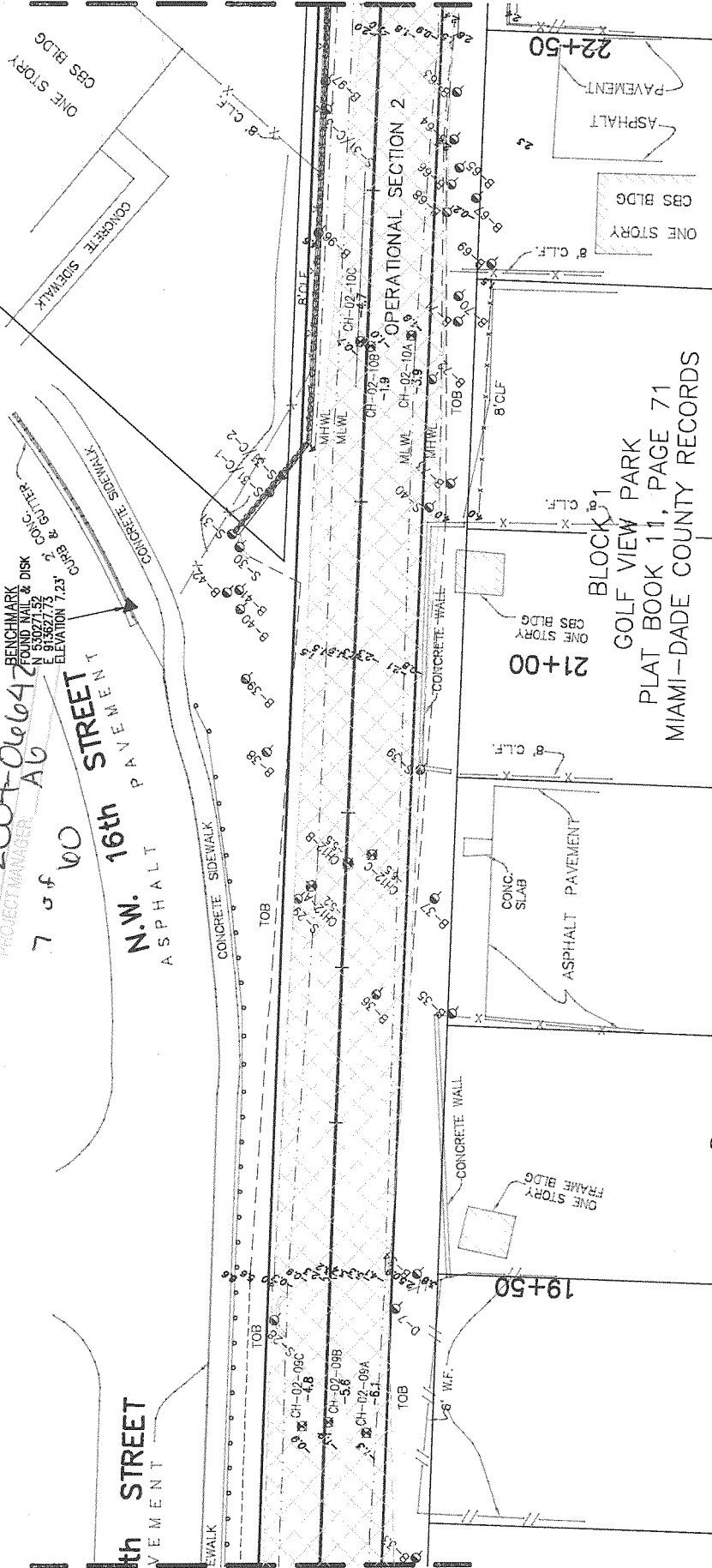
CONCRETE SIDEWALK
ASPHALT PAVEMENT
N.W. 16th STREET

SEE SHEET 8

MATCHLINE

SEE SHEET 8

MATCHLINE



BLOCK 1
GOLF VIEW PARK
PLAT BOOK 11, PAGE 71
MIAMI-DADE COUNTY RECORDS

OPERATIONAL SECTION 2 SHEET 7 OF 23

ARC SURVEYING & MAPPING, INC.
5202 SAN JUAN AVENUE,
JACKSONVILLE, FLORIDA 32210
PHONE: 904/384-8377
LICENSED BUSINESS NO. 6487

ARC

DRAWN BY: JKJ DATE: 11-14-08 FIELD BOOK & PAGE 08-08/08-09 JOB NO. 07-10-07

CERTIFICATION:
I HEREBY CERTIFY THAT THE INFORMATION DEPICTED HEREON IS TRUE AND COMPLETE AND MEETS THE MINIMUM TECHNICAL STANDARDS AS ESTABLISHED BY THE BOARD OF PROFESSIONAL SURVEYORS AND MAPPERS IN CHAPTER 81G17-6 OF THE FLORIDA ADMINISTRATIVE CODE, PURSUANT TO CHAPTER 472 OF THE FLORIDA STATUTES.

MITCHELL R. JARRELLS
FLORIDA REGISTERED CERTIFICATE NO. 6438

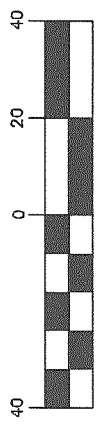
DADE COUNTY, FLORIDA
WAGNER CREEK &
SEYBOLD CANAL
MIAMI, FLORIDA

CH2MHILL

CH2MHILL

□ DENOTES DREDGE LIMITS

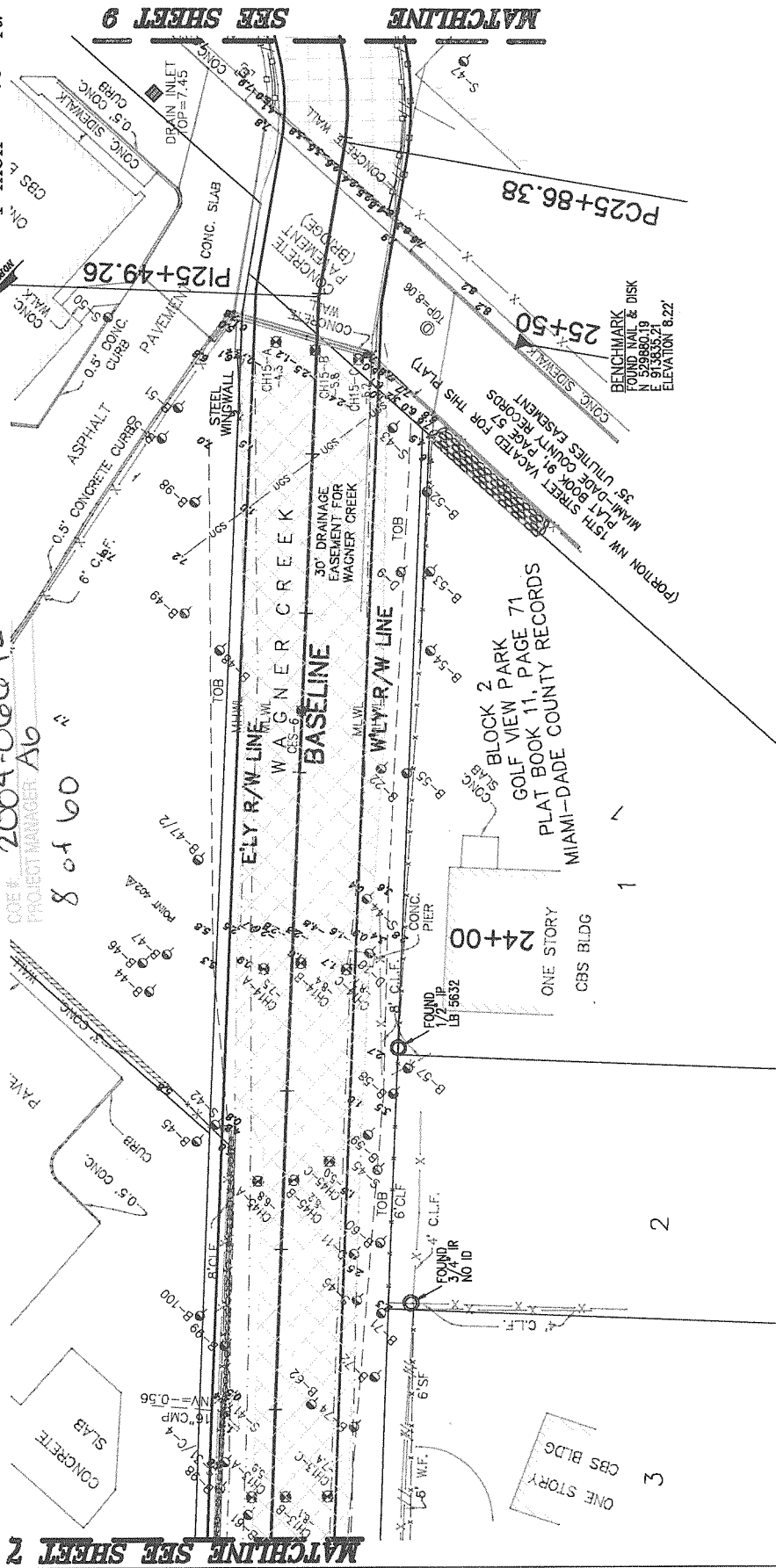
GRAPHIC SCALE



(IN FEET)
1 inch = 40 ft.

US ARMY
CORPS OF ENGINEERS
JUL 19 2011
MIAMI REGULATORY OFFICE

COE # 200A-066642
PROJECT MANAGER AG
80560



OPERATIONAL SECTION 2 & 3 SHEET 8 OF 23

ARC SURVEYING & MAPPING, INC.
5202 SAN JUAN AVENUE,
JACKSONVILLE, FLORIDA 32210
PHONE: 904/384-8377
LICENSED BUSINESS NO. 6487

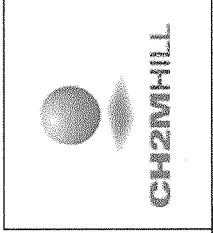
ARC

DATE: 11-14-08
FIELD BOOK & PAGE JOB NO.
JKM 08-08/08-09 07-10-07

CERTIFICATION:
I HEREBY CERTIFY THAT THE INFORMATION DEPICTED HEREON IS TRUE AND COMPLETE AND MEETS THE MINIMUM TECHNICAL STANDARDS AS ESTABLISHED BY THE BOARD OF PROFESSIONAL SURVEYORS AND MAPPERS IN CHAPTER 61G17-6 OF THE FLORIDA ADMINISTRATIVE CODE, PURSUANT TO CHAPTER 472 OF THE FLORIDA STATUTES.

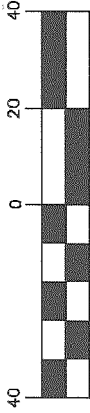
MITCHELL R. JARRELLS
FLORIDA REGISTERED CERTIFICATE NO. 6438

DADE COUNTY, FLORIDA
WAGNER CREEK &
SEYBOLD CANAL
MIAMI, FLORIDA



ONE STORY CBS BLDG
DENOTES DREDGE LIMITS

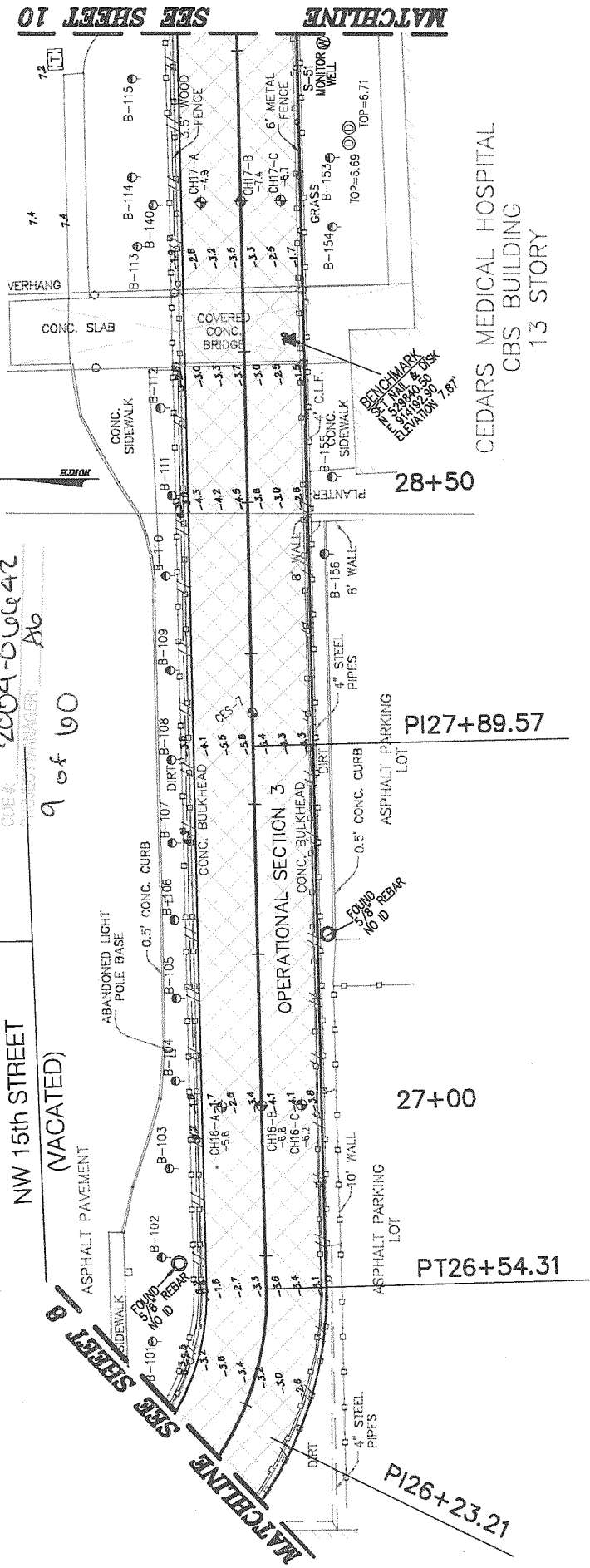
GRAPHIC SCALE



(IN FEET)
1 inch = 40 ft.

USARMY
CORPS OF ENGINEERS
JUL 19 2011
MIAMI REGULATION OFFICE

COE 4 2004-06042
PROJECT MANAGER
9 of 60



CEDARS MEDICAL HOSPITAL
CBS BUILDING
13 STORY

OPERATIONAL SECTION 3 SHEET 9 OF 23

ARC SURVEYING & MAPPING, INC.
5202 SAN JUAN AVENUE,
JACKSONVILLE, FLORIDA 32210
PHONE: 904/384-8377
LICENSED BUSINESS NO. 6487

ARC

DRAWN BY: JKM DATE: 11-14-08 FIELD BOOK & PAGE 08-08/08-09 JOB NO. 07-10-07

CERTIFICATION:
I HEREBY CERTIFY THAT THE INFORMATION DEPICTED HEREON IS TRUE AND COMPLETE AND MEETS THE MINIMUM TECHNICAL STANDARDS AS ESTABLISHED BY THE BOARD OF PROFESSIONAL SURVEYORS AND MAPPERS IN CHAPTER 61G17-8 OF THE FLORIDA ADMINISTRATIVE CODE, PURSUANT TO CHAPTER 472 OF THE FLORIDA STATUTES.

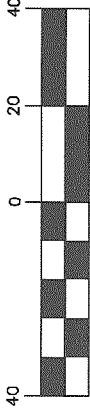
MITCHELL R. JARRELLS
FLORIDA REGISTERED CERTIFICATE NO. 6438

DADE COUNTY, FLORIDA
WAGNER CREEK &
SEYBOLD CANAL
MIAMI, FLORIDA

CH2MHILL

DENOTES DREDGE LIMITS

GRAPHIC SCALE



(IN FEET)

1 inch = 40 ft.

US ARMY

CORPS OF ENGINEERS

JUL 19 2011

MIAMI REGULATORY OFFICE

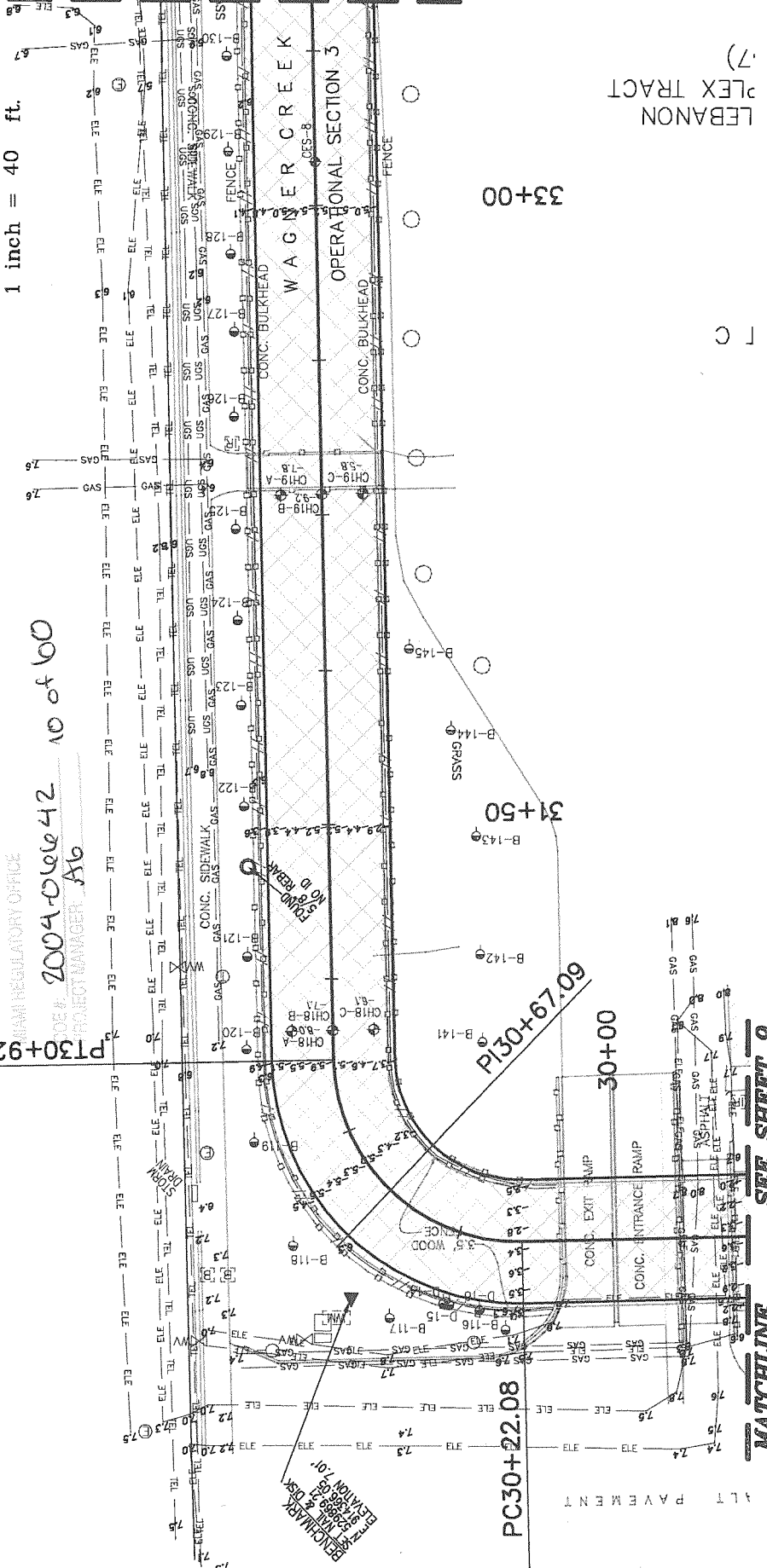
PROJECT # 2004-06642 10 of 60

PROJECT MANAGER: Ab

P130+92.77

SEE SHEET 11

MATCHLINE



OPERATIONAL SECTION 3 SHEET 10 OF 23

ARC SURVEYING & MAPPING, INC.
 5202 SAN JUAN AVENUE
 JACKSONVILLE, FLORIDA 32210
 PHONE: 904/384-8377
 LICENSED BUSINESS NO. 6487

ARC

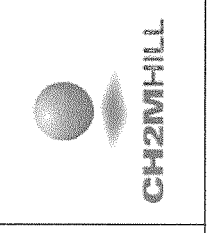
DATE: 11-14-08
 FIELD BOOK & PAGE: 08-08/08-09
 JOB NO.: 07-10-07

DRAWN BY: JKM
 CHECKED BY: JKM

CERTIFICATION:
 I HEREBY CERTIFY THAT THE INFORMATION DEPICTED HEREON IS TRUE AND COMPLETE AND MEETS THE MINIMUM TECHNICAL STANDARDS AS ESTABLISHED BY THE BOARD OF PROFESSIONAL SURVEYORS AND MAPPERS IN CHAPTER 61G17-6 OF THE FLORIDA ADMINISTRATIVE CODE, PURSUANT TO CHAPTER 472 OF THE FLORIDA STATUTES.

MITCHELL R. JARRELLS
 FLORIDA REGISTERED CERTIFICATE NO. 6438

DADE COUNTY, FLORIDA
WAGNER CREEK & SEYBOLD CANAL
 MIAMI, FLORIDA



DENOTES DREDGE LIMITS

SEE SHEET 12

PI36+96.06 N.W. 12'

MATCHLINE

ELY R/W LINE

BASELINE

PI35+79.37

36+00
PT35+96.36

NW 14th STREET

PC35+57.18

34+50

CEDARS MEDICAL HOSPITAL

ASPHALT PAVEMENT
NW 12th AVENUE

SEE SHEET 10

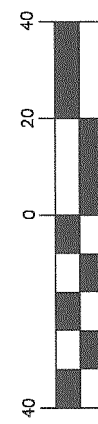
MATCHLINE

US ARMY
CORPS OF ENGINEERS
JUL 18 2011

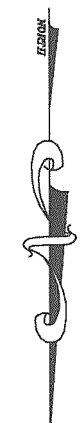
PROJECT NUMBER 2004-06642
PROJECT MANAGER AG

11 of 60

GRAPHIC SCALE



(IN FEET)
1 inch = 40 ft.



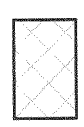
TOP=6

TOP=6.11

CERTIFICATION:
I HEREBY CERTIFY THAT THE INFORMATION DEPICTED HEREON IS TRUE AND COMPLETE AND MEETS THE MINIMUM TECHNICAL STANDARDS AS ESTABLISHED BY THE BOARD OF PROFESSIONAL SURVEYORS AND MAPPERS IN CHAPTER 81G17-8 OF THE FLORIDA ADMINISTRATIVE CODE, PURSUANT TO CHAPTER 472 OF THE FLORIDA STATUTES.

MITCHELL R. JARRELLS
FLORIDA REGISTERED CERTIFICATE NO. 6438

DADE COUNTY, FLORIDA
WAGNER CREEK &
SEYBOLD CANAL
MIAMI, FLORIDA



DENOTES DREDGE LIMITS

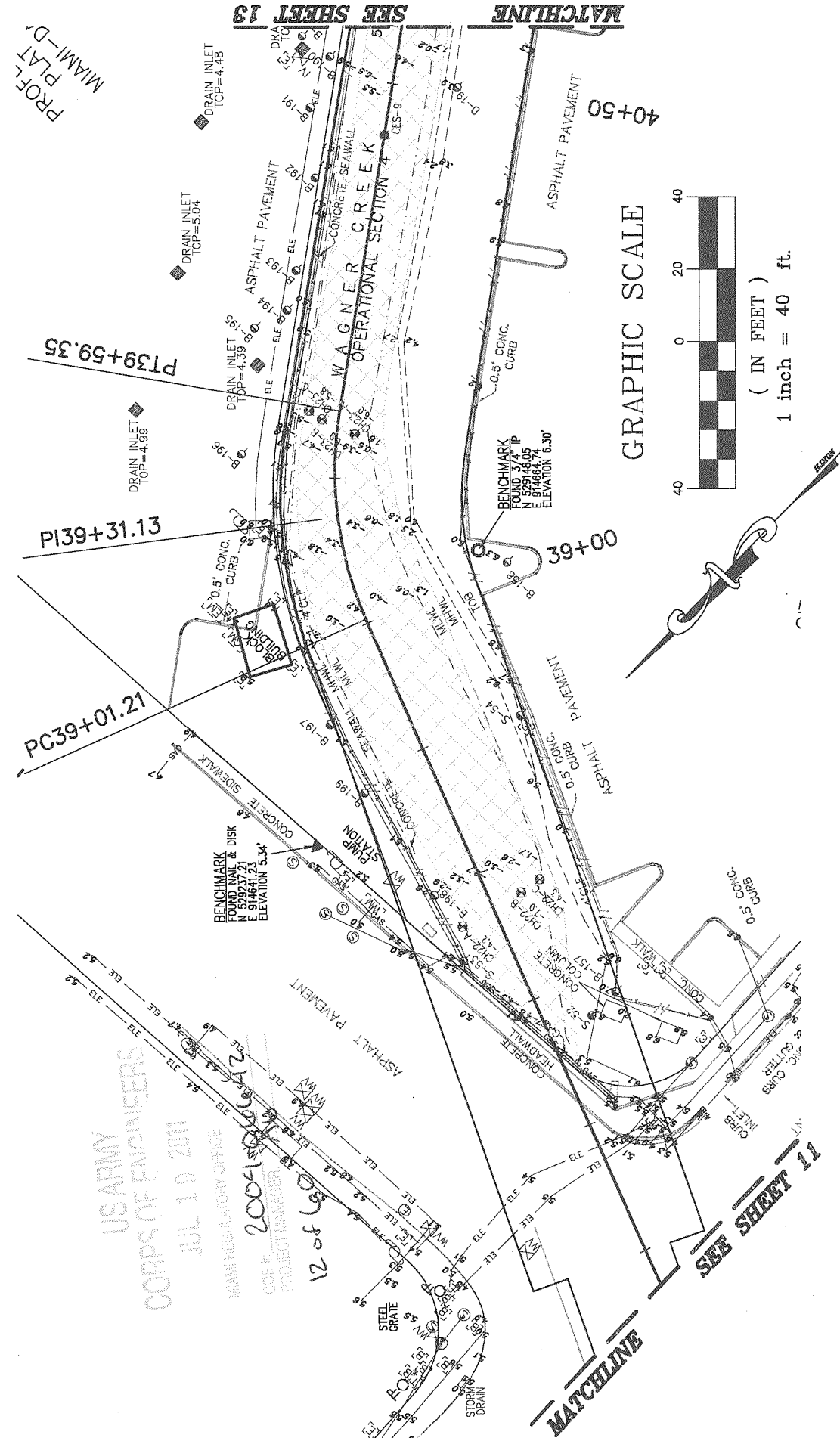
OPERATIONAL SECTION 3 SHEET 11 OF 23

ARC SURVEYING & MAPPING, INC.

5202 SAN JUAN AVENUE,
JACKSONVILLE, FLORIDA 32210
PHONE: 904/384-8377
LICENSED BUSINESS NO. 6487

DRAWN BY: JKM DATE: 11-14-08
FIELD BOOK & PAGE: 08-08/08-09
JOB NO.: 07-10-07

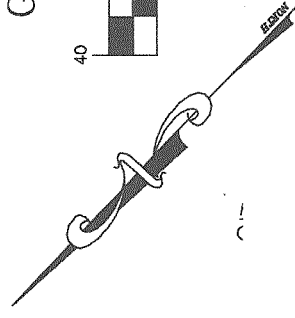
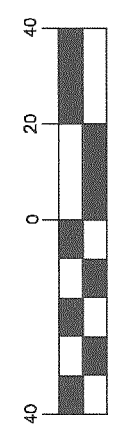
A-08-29



PROF.
PLAT
MIAMI-D-1

SEE SHEET 13 MATCHLINE

GRAPHIC SCALE
(IN FEET)
1 inch = 40 ft.



US ARMY
CORPS OF ENGINEERS
JUL 19 2011
MIAMI REGULATORY OFFICE
COE # 2004-12
PROJECT MANAGER: 12

SEE SHEET 11 MATCHLINE

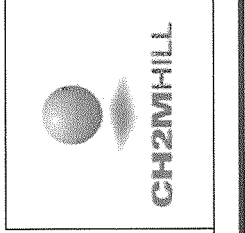
ARC SURVEYING & MAPPING, INC.
5202 SAN JUAN AVENUE,
JACKSONVILLE, FLORIDA 32210
PHONE: 904/384-8377
LICENSED BUSINESS NO. 6487

OPERATIONAL SECTION 4 SHEET 12 OF 23

CERTIFICATION:
I HEREBY CERTIFY THAT THE INFORMATION DEPICTED HEREON IS TRUE AND COMPLETE AND MEETS THE MINIMUM TECHNICAL STANDARDS AS ESTABLISHED BY THE BOARD OF PROFESSIONAL SURVEYORS AND MAPPERS IN CHAPTER 61G17-9 OF THE FLORIDA ADMINISTRATIVE CODE, PURSUANT TO CHAPTER 472 OF THE FLORIDA STATUTES.

MITCHELL R. JARRELLS
FLORIDA REGISTERED CERTIFICATE NO. 6438

DADE COUNTY, FLORIDA
WAGNER CREEK & SEYBOLD CANAL
MIAMI, FLORIDA

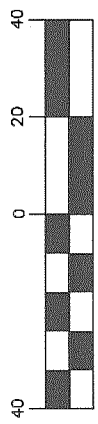


CH2MHILL

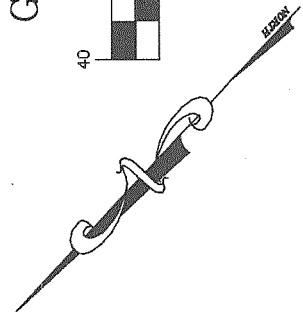
□ DENOTES DREDGE LIMITS

DRAWN BY: JKM
DATE: 11-14-08
FIELD BOOK & PAGE: 08-08/08-09
JOB NO.: 07-10-07

GRAPHIC SCALE



(IN FEET)
1 inch = 40 ft.

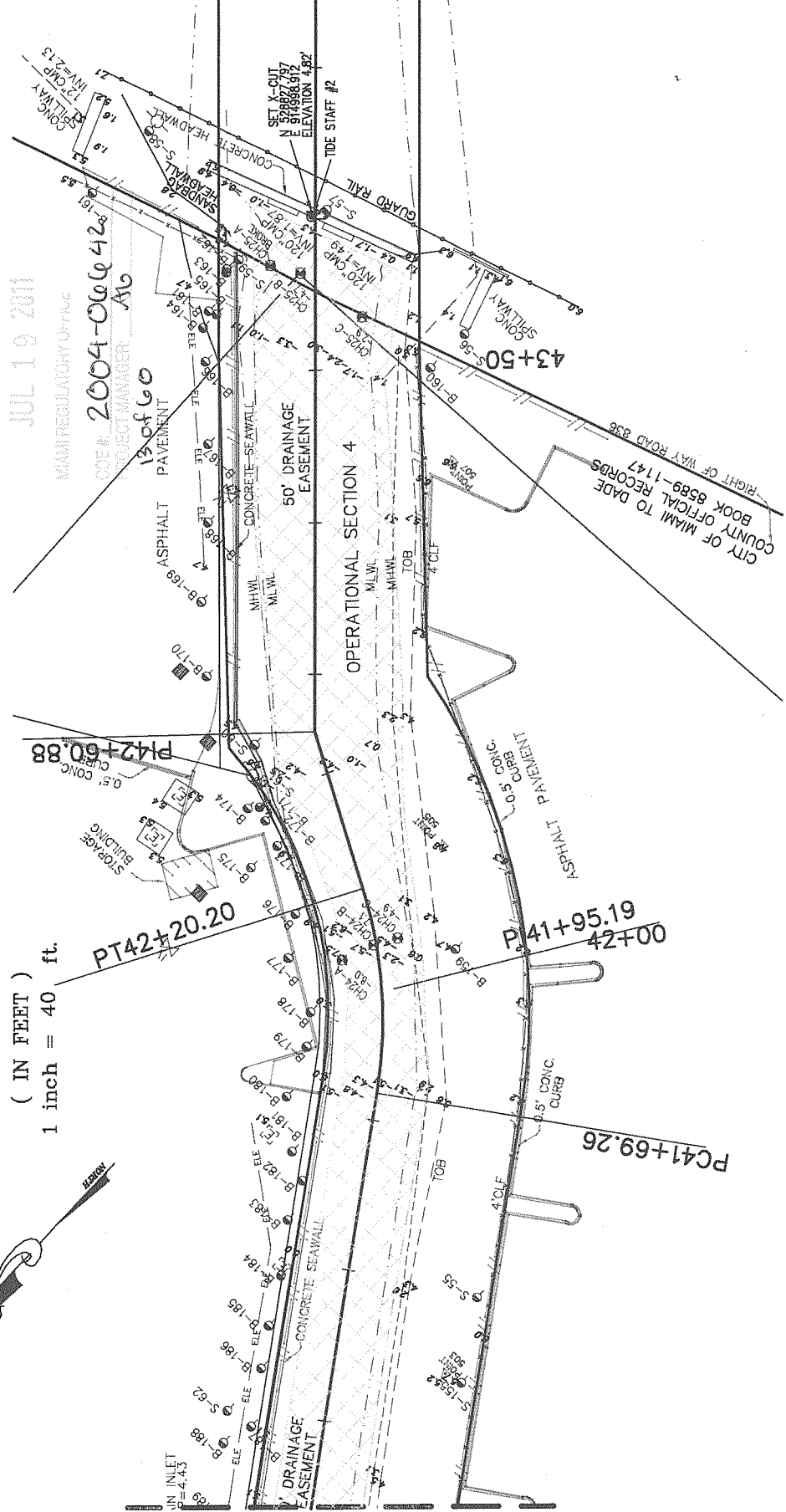


US ARMY
CORPS OF ENGINEERS
JUL 19 2011

MIAMI REGULATORY OFFICE
COE # 2004-066420-16
PROJECT MANAGER: AIG

SEE SHEET 12 MATCHLINE

SEE SHEET 14 MATCHLINE



OPERATIONAL SECTION 4 SHEET 13 OF 23

ARC SURVEYING & MAPPING, INC.
5202 SAN JUAN AVENUE,
JACKSONVILLE, FLORIDA 32210
PHONE: 904/384-8377
LICENSED BUSINESS NO. 6487

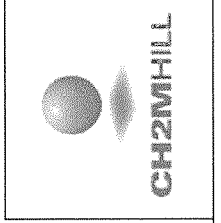
ARC

DRAWN BY: JKM DATE: 11-14-08 FIELD BOOK & PAGE JOB NO.
08-08/08-09 07-10-07

CERTIFICATION:
I HEREBY CERTIFY THAT THE INFORMATION DEPICTED HEREON IS TRUE AND COMPLETE AND MEETS THE MINIMUM TECHNICAL STANDARDS AS ESTABLISHED BY THE BOARD OF PROFESSIONAL SURVEYORS AND MAPPERS IN CHAPTER 61G17-5 OF THE FLORIDA ADMINISTRATIVE CODE, PURSUANT TO CHAPTER 472 OF THE FLORIDA STATUTES.

MITCHELL R. JARRELLS
FLORIDA REGISTERED CERTIFICATE NO. 6438

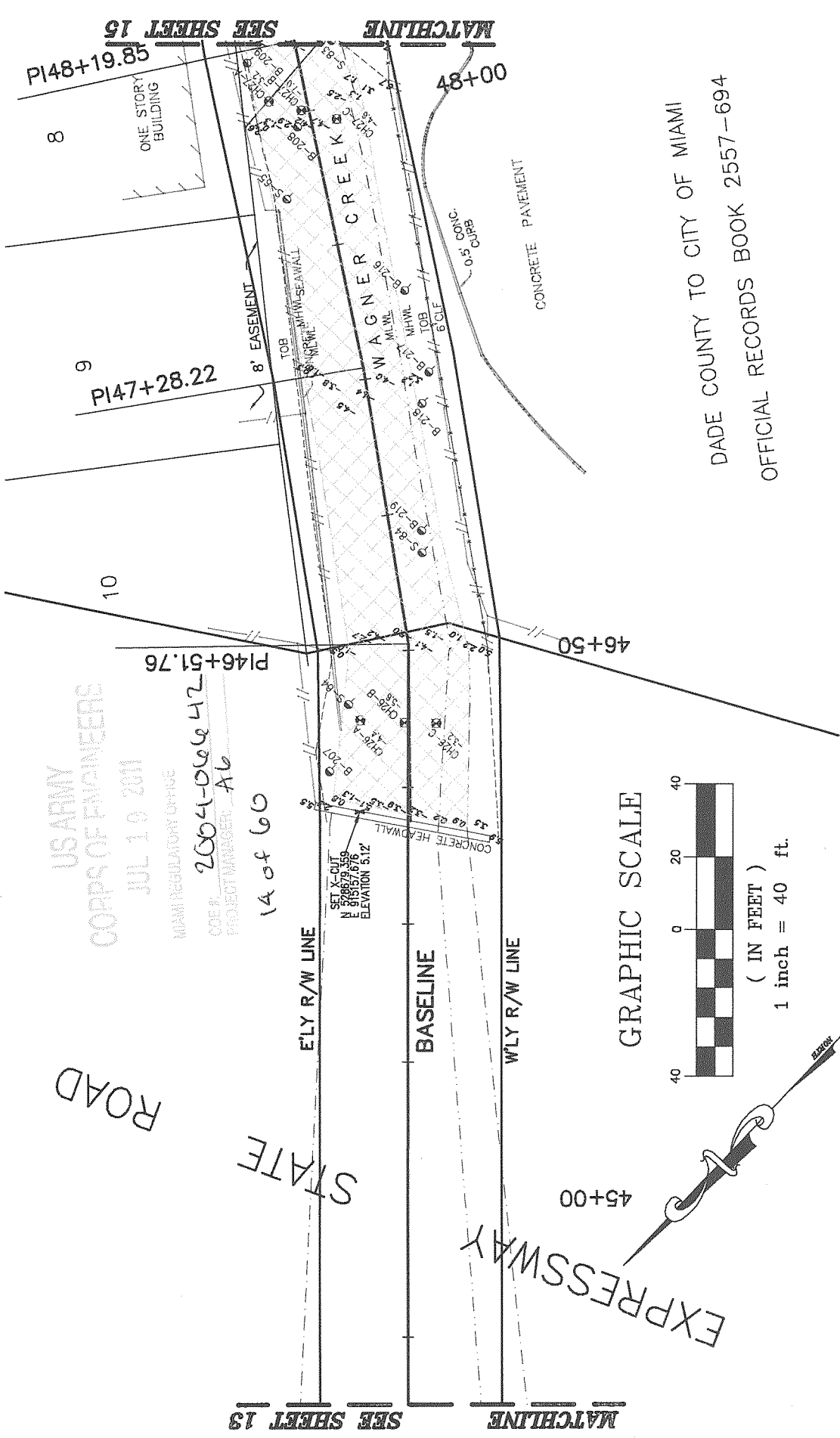
DADE COUNTY, FLORIDA
WAGNER CREEK & SEYBOLD CANAL
MIAMI, FLORIDA



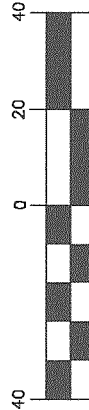
CH2MHILL

□ DENOTES DREDGE LIMITS

US ARMY
CORPS OF ENGINEERS
JUL 10 2011
MIAMI REGULATORY OFFICE
COE # 2004-066472
PROJECT MANAGER: AB
14 of 60



GRAPHIC SCALE



(IN FEET)
1 inch = 40 ft.

CERTIFICATION:

I HEREBY CERTIFY THAT THE INFORMATION DEPICTED HEREON IS TRUE AND COMPLETE AND MEETS THE MINIMUM TECHNICAL STANDARDS AS ESTABLISHED BY THE BOARD OF PROFESSIONAL SURVEYORS AND MAPPERS IN CHAPTER 81G17-9 OF THE FLORIDA ADMINISTRATIVE CODE, PURSUANT TO CHAPTER 472 OF THE FLORIDA STATUTES.

MITCHELL R. JARRELLS
FLORIDA REGISTERED CERTIFICATE NO. 6438

DADE COUNTY, FLORIDA
WAGNER CREEK &
SEYBOLD CANAL
MIAMI, FLORIDA



DENOTES DREDGE LIMITS

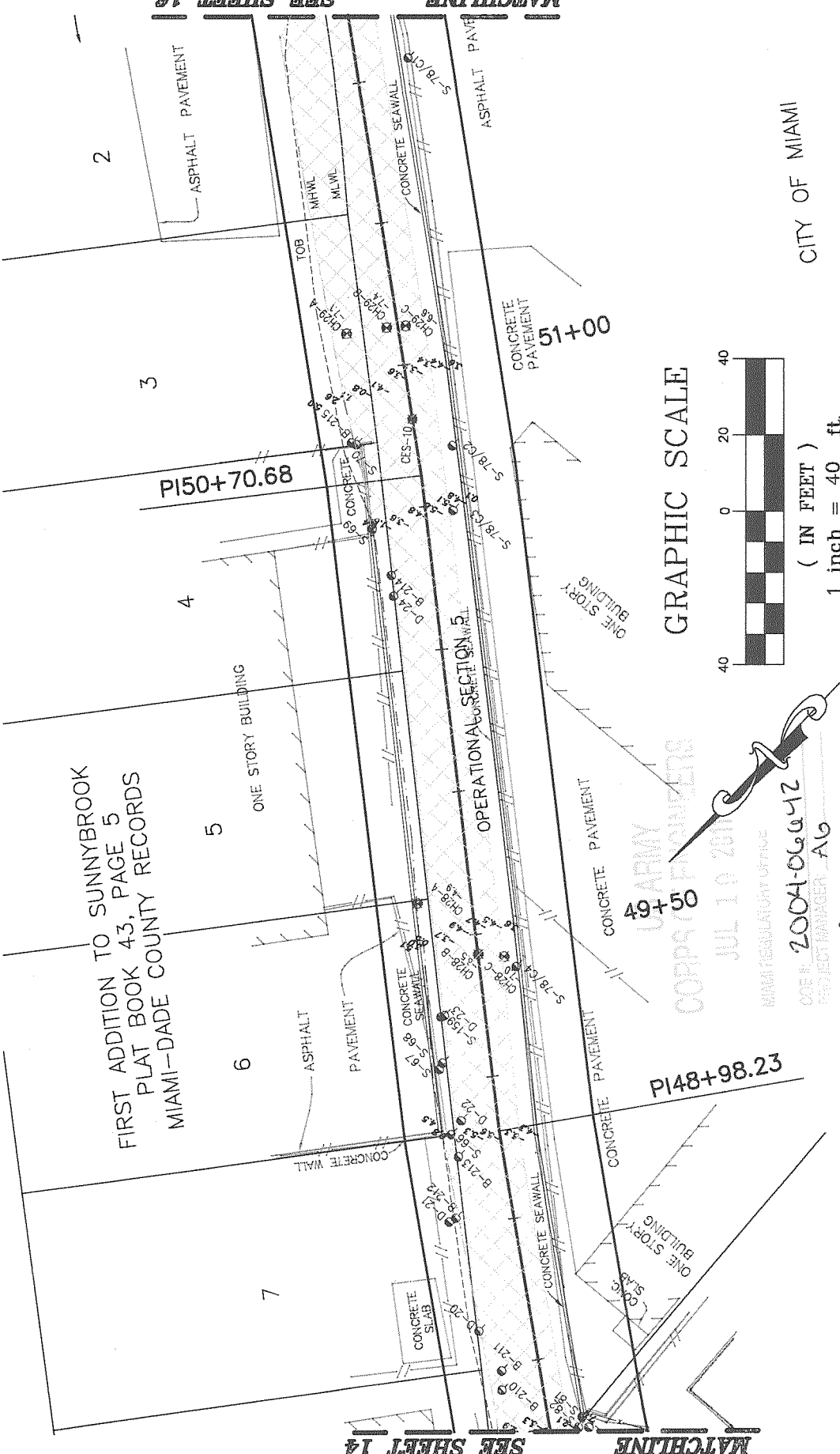
OPERATIONAL SECTION 5 SHEET 14 OF 23

ARC SURVEYING & MAPPING, INC.

5202 SAN JUAN AVENUE,
JACKSONVILLE, FLORIDA 32210
PHONE: 904/364-8377
LICENSED BUSINESS NO. 6487

DRAWN BY: JKM DATE: 11-14-08 FIELD BOOK & PAGE JOB NO.
08-08/08-09 07-10-07

FIRST ADDITION TO SUNNYBROOK
PLAT BOOK 43, PAGE 5
MIAMI-DADE COUNTY RECORDS



SEE SHEET 14 MATCHLINE

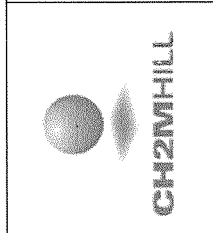
SEE SHEET 16 MATCHLINE

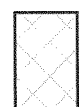
OPERATIONAL SECTION 5 SHEET 15 OF 23

ARC SURVEYING & MAPPING, INC.
5202 SAN JUAN AVENUE,
JACKSONVILLE, FLORIDA 32210
PHONE: 904/384-8377
LICENSED BUSINESS NO. 6487

CERTIFICATION:
I HEREBY CERTIFY THAT THE INFORMATION DEPICTED HEREON IS TRUE
AND COMPLETE AND MEETS THE MINIMUM TECHNICAL STANDARDS AS
ESTABLISHED BY THE BOARD OF PROFESSIONAL SURVEYORS AND
MAPPERS IN CHAPTER 61G17-6 OF THE FLORIDA ADMINISTRATIVE
CODE, PURSUANT TO CHAPTER 472 OF THE FLORIDA STATUTES.

DADE COUNTY, FLORIDA
**WAGNER CREEK &
SEYBOLD CANAL**
MIAMI, FLORIDA



 DENOTES DREDGE LIMITS

OPERATIONAL SECTION 5 SHEET 15 OF 23

ARC

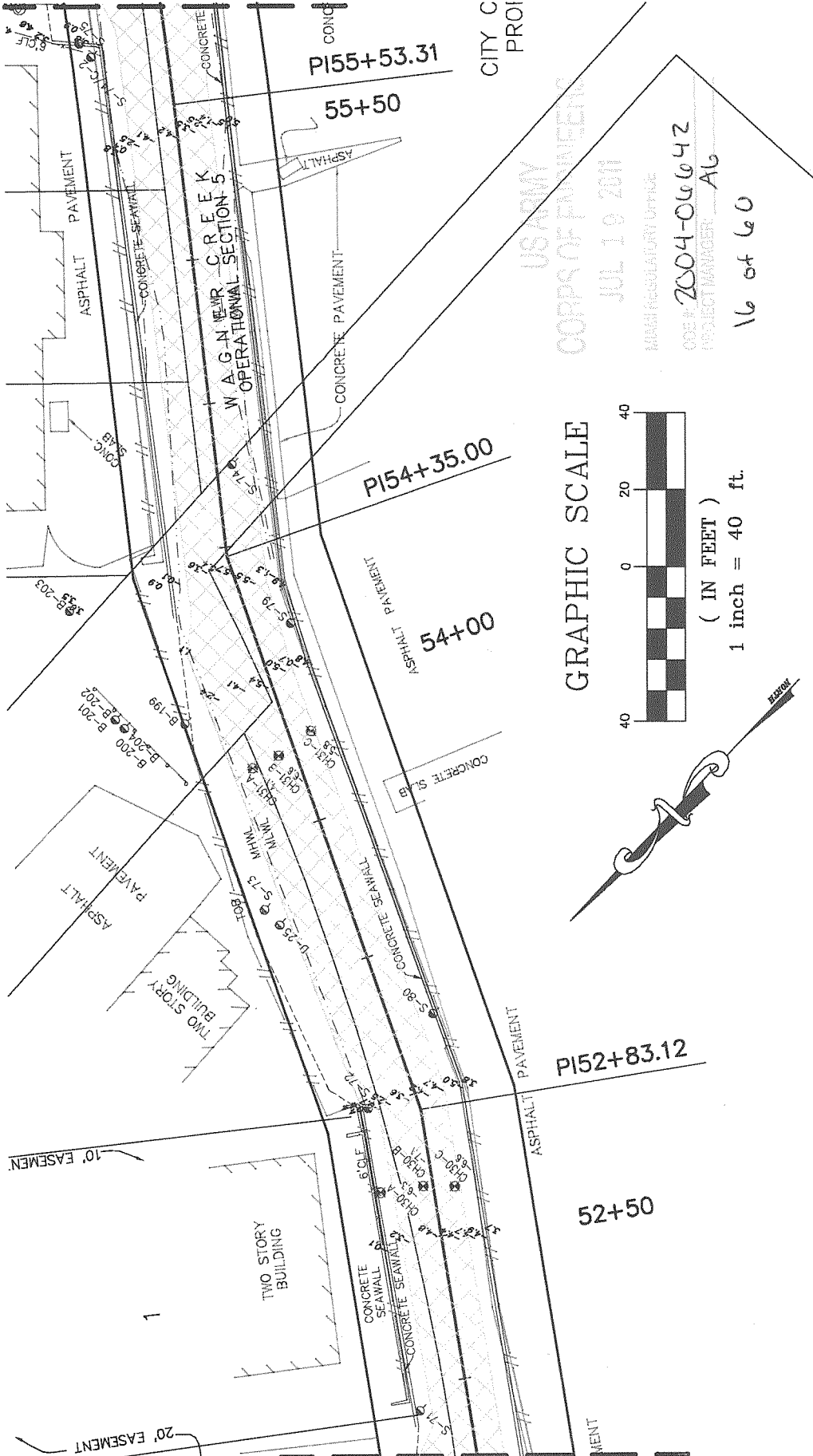
MITCHELL R. JARRELLS
FLORIDA REGISTERED CERTIFICATE NO. 6438

DATE: 11-14-08
DRAWN BY: JKM
FIELD BOOK & PAGE: 08-08/08-09

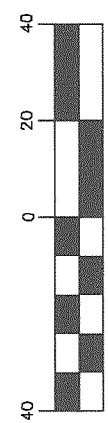
JOB NO.: 07-10-07

A-08-29

MATCHLINE SEE SHEET 17



GRAPHIC SCALE



(IN FEET)
1 inch = 40 ft.

US ARMY
CORPS OF ENGINEERS
JUL 19 2011
IMMEDIATE REGULATORY OFFICE
OPERATION # 2004-06642
PROJECT MANAGER: AG

16 of 60

OPERATIONAL SECTION 5 SHEET 16 OF 23

ARC SURVEYING & MAPPING, INC.
 5202 SAN JUAN AVENUE,
 JACKSONVILLE, FLORIDA 32210
 PHONE: 904/384-8377
 LICENSED BUSINESS NO. 6487

ARC

DRAWN BY: JKM DATE: 11-14-08 FIELD BOOK & PAGE JOB NO. 08-08/08-09 07-10-07

CERTIFICATION:
 I HEREBY CERTIFY THAT THE INFORMATION DEPICTED HEREON IS TRUE AND COMPLETE AND MEETS THE MINIMUM TECHNICAL STANDARDS AS ESTABLISHED BY THE BOARD OF PROFESSIONAL SURVEYORS AND MAPPERS IN CHAPTER 61G17-6 OF THE FLORIDA ADMINISTRATIVE CODE, PURSUANT TO CHAPTER 472 OF THE FLORIDA STATUTES.

MITCHELL R. JARRELLS
 FLORIDA REGISTERED CERTIFICATE NO. 6438

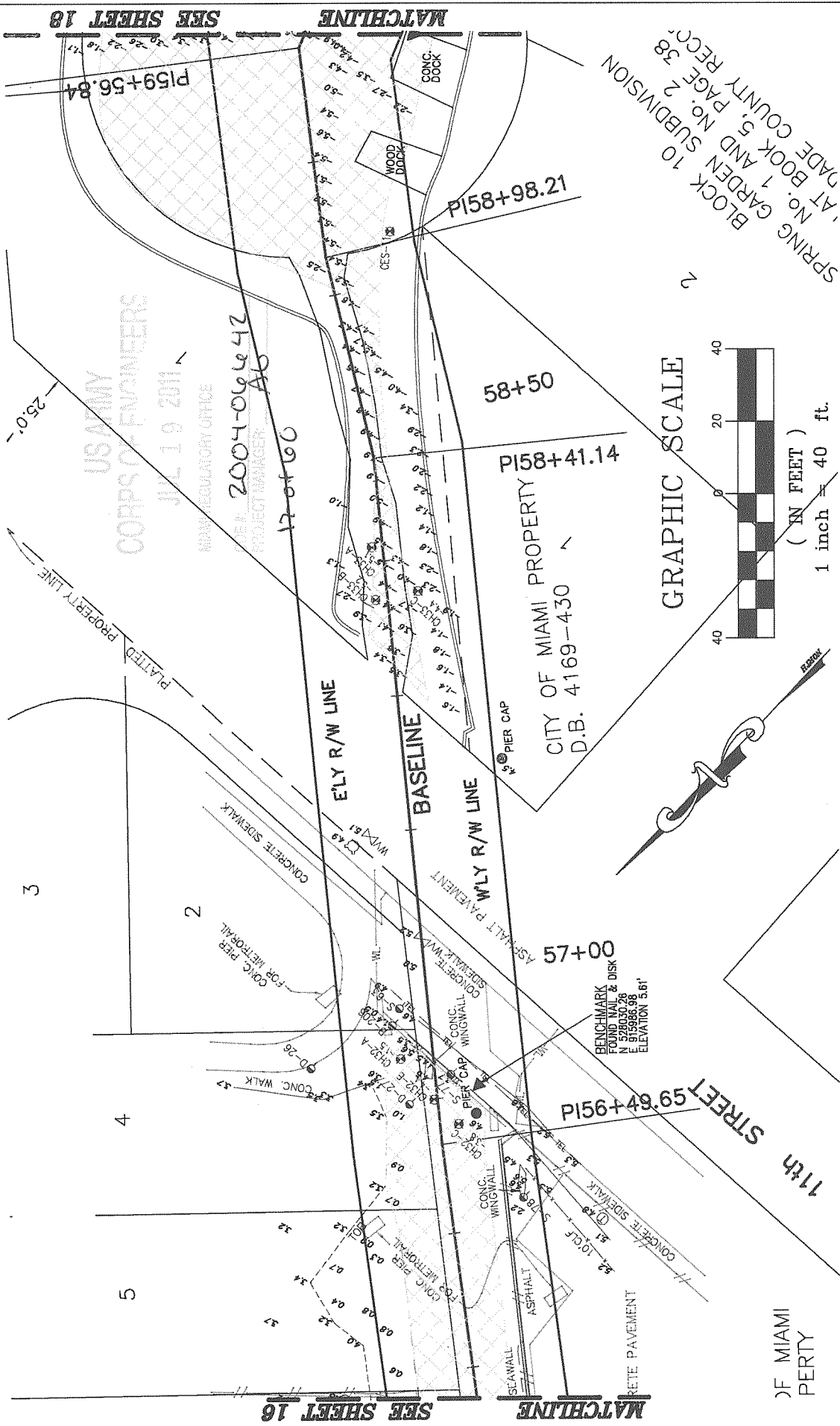
DADE COUNTY, FLORIDA
WAGNER CREEK & SEYBOLD CANAL
 MIAMI, FLORIDA

CH2MHILL

DENOTES DREDGE LIMITS

SEE SHEET 15 MATCHLINE

A-08-29



SEE SHEET 18

MATCHLINE

US ARMY
CORPS OF ENGINEERS

JUL 19 2011

MANUFACTURING OFFICE

FILE # 2004-09642
PROJECT MANAGER: AG

17+60

PI58+98.21

58+50

PI58+41.14

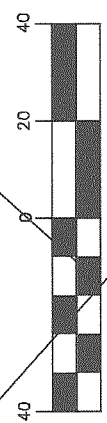
CITY OF MIAMI PROPERTY
D.B. 4169-430

57+00

PI56+49.65

OF MIAMI
PERTY

GRAPHIC SCALE
(IN FEET)
1 inch = 40 ft.



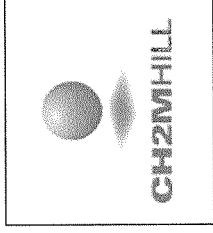
SPRING GARDEN SUBDIVISION
BLOCK 10 AND NO. 2
DADE COUNTY REC. 38

OPERATIONAL SECTION 5 SHEET 17 OF 23

CERTIFICATION:
I HEREBY CERTIFY THAT THE INFORMATION DEPICTED HEREON IS TRUE AND COMPLETE AND MEETS THE MINIMUM TECHNICAL STANDARDS AS ESTABLISHED BY THE BOARD OF PROFESSIONAL SURVEYORS AND MAPPERS IN CHAPTER 61G17-6 OF THE FLORIDA ADMINISTRATIVE CODE, PURSUANT TO CHAPTER 472 OF THE FLORIDA STATUTES.

MITCHELL R. JARRELLS
FLORIDA REGISTERED CERTIFICATE NO. 6438

DADE COUNTY, FLORIDA
WAGNER CREEK &
SEYBOLD CANAL
MIAMI, FLORIDA



CH2MHILL

DENOTES DREDGE LIMITS

ARC SURVEYING & MAPPING, INC.

5202 SAN JUAN AVENUE,
JACKSONVILLE, FLORIDA 32210
PHONE: 904/384-8377
LICENSED BUSINESS NO. 6487

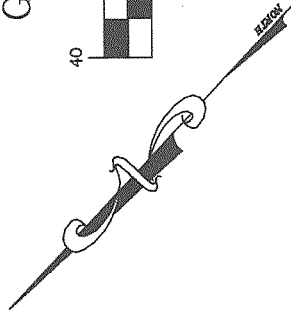
DRAWN BY: JKM DATE: 11-14-08 FIELD BOOK & PAGE: 08-08/08-09 JOB NO.: 07-10-07

A-08-29

GRAPHIC SCALE



(IN FEET)
1 inch = 40 ft.



US ARMY
CORPS OF ENGINEERS

JUL 19 2011

ENGINEER REGULATOR OFFICE

JOB NO. 2004-06642

PROJECT MANAGER: AG

18 of 60

3

P160+20.75

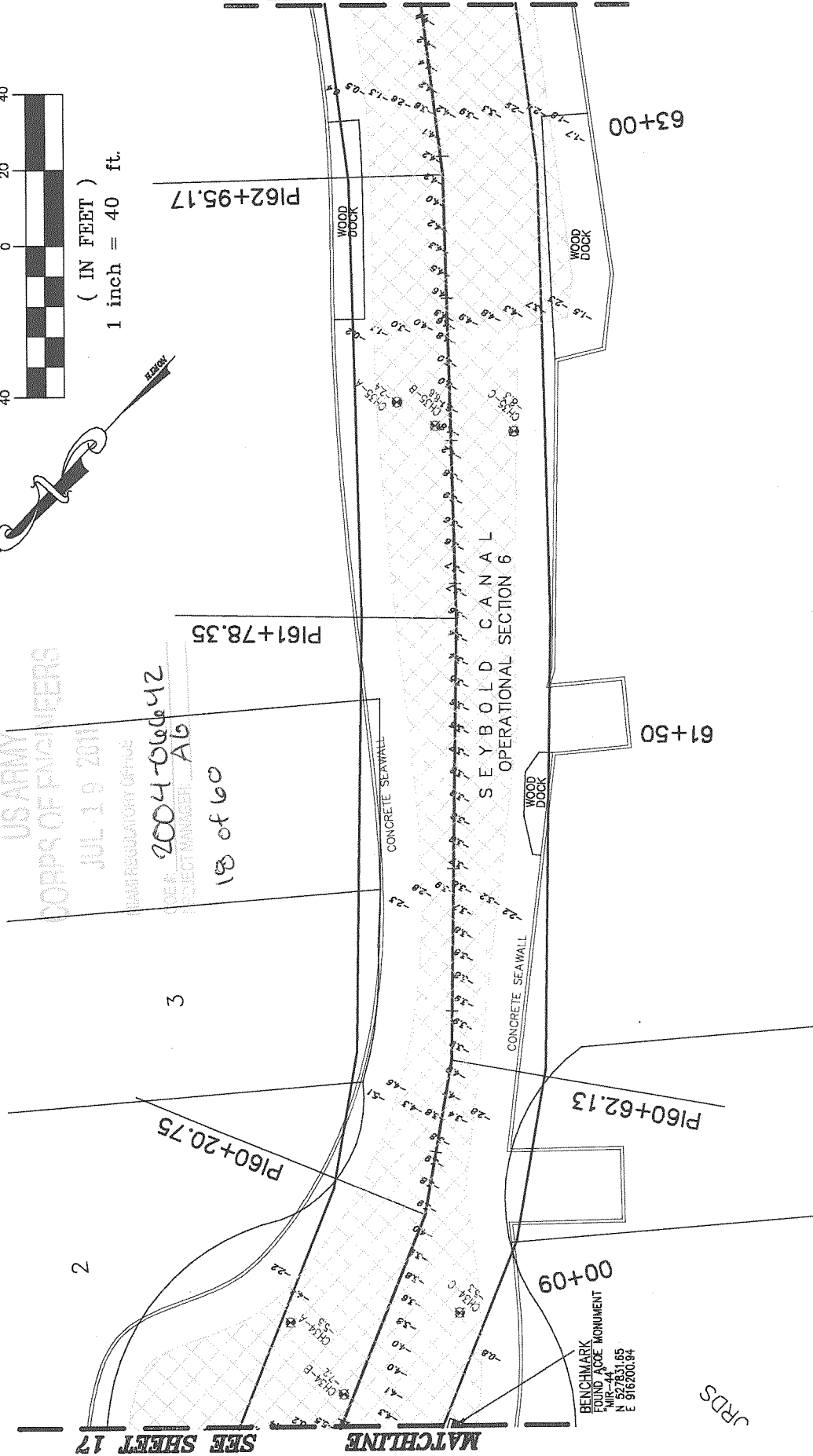
2

SEE SHEET 17

MATCHLINE

SEE SHEET 19

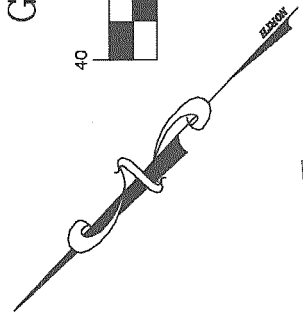
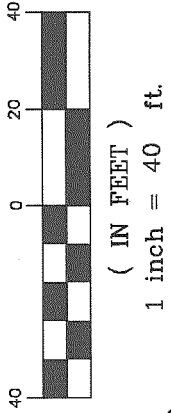
MATCHLINE



CRDS

<p>DADE COUNTY, FLORIDA WAGNER CREEK & SEYBOLD CANAL MIAMI, FLORIDA</p>	<p>CERTIFICATION: I HEREBY CERTIFY THAT THE INFORMATION DEPICTED HEREON IS TRUE AND COMPLETE AND MEETS THE MINIMUM TECHNICAL STANDARDS AS ESTABLISHED BY THE BOARD OF PROFESSIONAL SURVEYORS AND MAPPERS IN CHAPTER 61G17-8 OF THE FLORIDA ADMINISTRATIVE CODE, PURSUANT TO CHAPTER 472 OF THE FLORIDA STATUTES.</p> <p>MITCHELL R. JARRELLS FLORIDA REGISTERED CERTIFICATE NO. 6436</p>	<p>OPERATIONAL SECTION 6 SHEET 18 OF 23</p> <p>ARC SURVEYING & MAPPING, INC. 5202 SAN JUAN AVENUE, JACKSONVILLE, FLORIDA 32210 PHONE: 904/384-8377 LICENSED BUSINESS NO. 6487</p> <p>ARC</p>
	<p>DNOTES DREDGE LIMITS</p>	<p>DRAWN BY: JKM DATE: 11-14-08 FIELD BOOK & PAGE: 08-08/08-09 JOB NO: 07-10-07</p> <p>A-08-29</p>

GRAPHIC SCALE



US ARMY
CORPS OF ENGINEERS

JUL 19 2011

MIAMI REGULATORY OFFICE

COE # 2004-06657C
PROJECT MANAGER AG
19 of 60



66+00

P165+23.42

64+50

P163+97.88

CERTIFICATION:
I HEREBY CERTIFY THAT THE INFORMATION DEPICTED HEREON IS TRUE AND COMPLETE AND MEETS THE MINIMUM TECHNICAL STANDARDS AS ESTABLISHED BY THE BOARD OF PROFESSIONAL SURVEYORS AND MAPPERS IN CHAPTER 61G17-8 OF THE FLORIDA ADMINISTRATIVE CODE PURSUANT TO CHAPTER 472 OF THE FLORIDA STATUTES.

MITCHELL R. JARRELLS
FLORIDA REGISTERED CERTIFICATE NO. 6438

DADE COUNTY, FLORIDA
WAGNER CREEK &
SEYBOLD CANAL
MIAMI, FLORIDA



DENOTES DREDGE LIMITS

OPERATIONAL SECTION 6 SHEET 19 OF 23

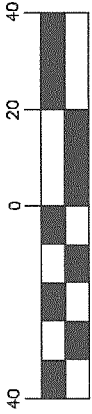
ARC SURVEYING & MAPPING, INC.

5202 SAN JUAN AVENUE,
JACKSONVILLE, FLORIDA 32210
PHONE: 904/384-8377
LICENSED BUSINESS NO. 6487

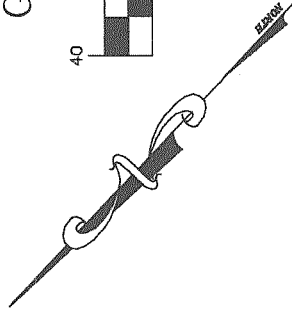
ARC
DRAWN BY: JKM DATE: 11-14-08 FIELD BOOK & PAGE: 08-08/08-09 JOB NO.: 07-10-07

A-08-29

GRAPHIC SCALE



(IN FEET)
1 inch = 40 ft.



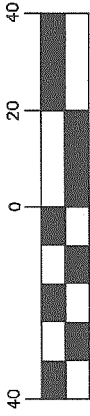
US ARMY
CORPS OF ENGINEERS
JUL 10 2011
MESSAGE NO. 2004-06642
PROJECT MANAGER: AB
20 of 60

		DADE COUNTY, FLORIDA WAGNER CREEK & SEYBOLD CANAL MIAMI, FLORIDA		CERTIFICATION: I HEREBY CERTIFY THAT THE INFORMATION DEPICTED HEREON IS TRUE AND COMPLETE AND MEETS THE MINIMUM TECHNICAL STANDARDS AS ESTABLISHED BY THE BOARD OF PROFESSIONAL SURVEYORS AND MAPPERS IN CHAPTER 61G17-8 OF THE FLORIDA ADMINISTRATIVE CODE, PURSUANT TO CHAPTER 472 OF THE FLORIDA STATUTES.	
		ARC SURVEYING & MAPPING, INC. 5202 SAN JUAN AVENUE, JACKSONVILLE, FLORIDA 32210 PHONE: 904/364-8377 LICENSED BUSINESS NO. 6487		OPERATIONAL SECTION 6 SHEET 20 OF 23	
DRAWN BY: JKM		DATE: 11-14-08		FIELD BOOK & PAGE JOB NO. 08-08/08-09 07-10-07	
MITCHELL R. JARRELLS FLORIDA REGISTERED CERTIFICATE NO. 6438					



DENOTES DREDGE LIMITS

GRAPHIC SCALE



(IN FEET)
1 inch = 40 ft.

US ARMY
CORPS OF ENGINEERS

JUL 19 2011

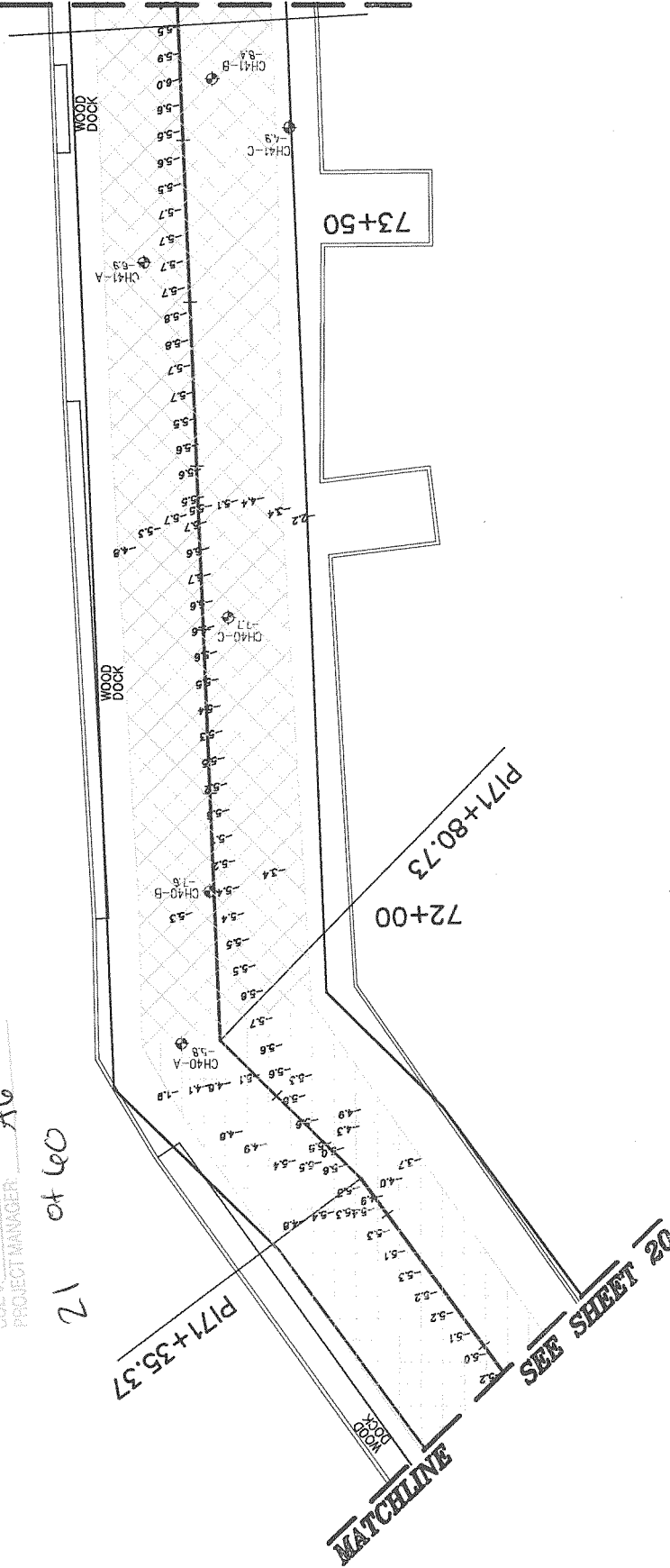
MIAMI REGULATORY OFFICE

CODE: 2004-066412

PROJECT MANAGER: Av

12 of 60

SEE SHEET 22 MATCHLINE



OPERATIONAL SECTION 6 SHEET 21 OF 23

ARC SURVEYING & MAPPING, INC.

5202 SAN JUAN AVENUE,
JACKSONVILLE, FLORIDA 32210
PHONE: 904/384-8377
LICENSED BUSINESS NO. 6487



DRAWN BY: JKM
DATE: 11-14-08
FIELD BOOK & PAGE: 08-08/08-09
JOB NO.: 07-10-07

CERTIFICATION:

I HEREBY CERTIFY THAT THE INFORMATION DEPICTED HEREON IS TRUE AND COMPLETE AND MEETS THE MINIMUM TECHNICAL STANDARDS AS ESTABLISHED BY THE BOARD OF PROFESSIONAL SURVEYORS AND MAPPERS IN CHAPTER 61G17-8 OF THE FLORIDA ADMINISTRATIVE CODE PURSUANT TO CHAPTER 472 OF THE FLORIDA STATUTES.

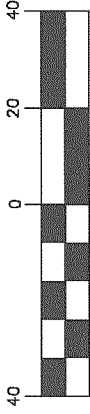
MITCHELL R. JARRELLS
FLORIDA REGISTERED CERTIFICATE NO. 6438

DADE COUNTY, FLORIDA
WAGNER CREEK &
SEYBOLD CANAL
MIAMI, FLORIDA



DENOTES DREDGE LIMITS

GRAPHIC SCALE



(IN FEET)
1 inch = 40 ft.

USARMY
CORPS OF ENGINEERS

JUL 19 2011

MIAMI REGULATORY OFFICE

COE #: 2004-06642
PROJECT MANAGER: A6

22 of 60

SEE SHEET 23 MATCHLINE

SEE SHEET 21 MATCHLINE

CONCRETE SEAWALL

WOOD DOOR
SEYBOLD CANAL
OPERATIONAL SECTION 6

CONCRETE SEAWALL

E'LY R/W LINE
BASELINE
W'LY R/W LINE

CONCRETE BRIDGE

76+50

75+00

P174+35.57

CERTIFICATION:
I HEREBY CERTIFY THAT THE INFORMATION DEPICTED HEREON IS TRUE AND COMPLETE AND MEETS THE MINIMUM TECHNICAL STANDARDS AS ESTABLISHED BY THE BOARD OF PROFESSIONAL SURVEYORS AND MAPPERS IN CHAPTER 81G17-9 OF THE FLORIDA ADMINISTRATIVE CODE, PURSUANT TO CHAPTER 472 OF THE FLORIDA STATUTES.

MITCHELL R. JARRELLS
FLORIDA REGISTERED CERTIFICATE NO. 6438

DADE COUNTY, FLORIDA
WAGNER CREEK &
SEYBOLD CANAL
MIAMI, FLORIDA



DENOTES DREDGE LIMITS

OPERATIONAL SECTION 6 SHEET 22 OF 23

ARC SURVEYING & MAPPING, INC.

5202 SAN JUAN AVENUE,
JACKSONVILLE, FLORIDA 32210
PHONE: 904/364-8377
LICENSED BUSINESS NO. 6487



DRAWN BY: JKM DATE: 11-14-08
FIELD BOOK & PAGE: 06-08/08-09
JOB NO.: 07-10-07

US ARMY
CORPS OF ENGINEERS

JUL 19 2011

MIAMI REGULATORY OFFICE

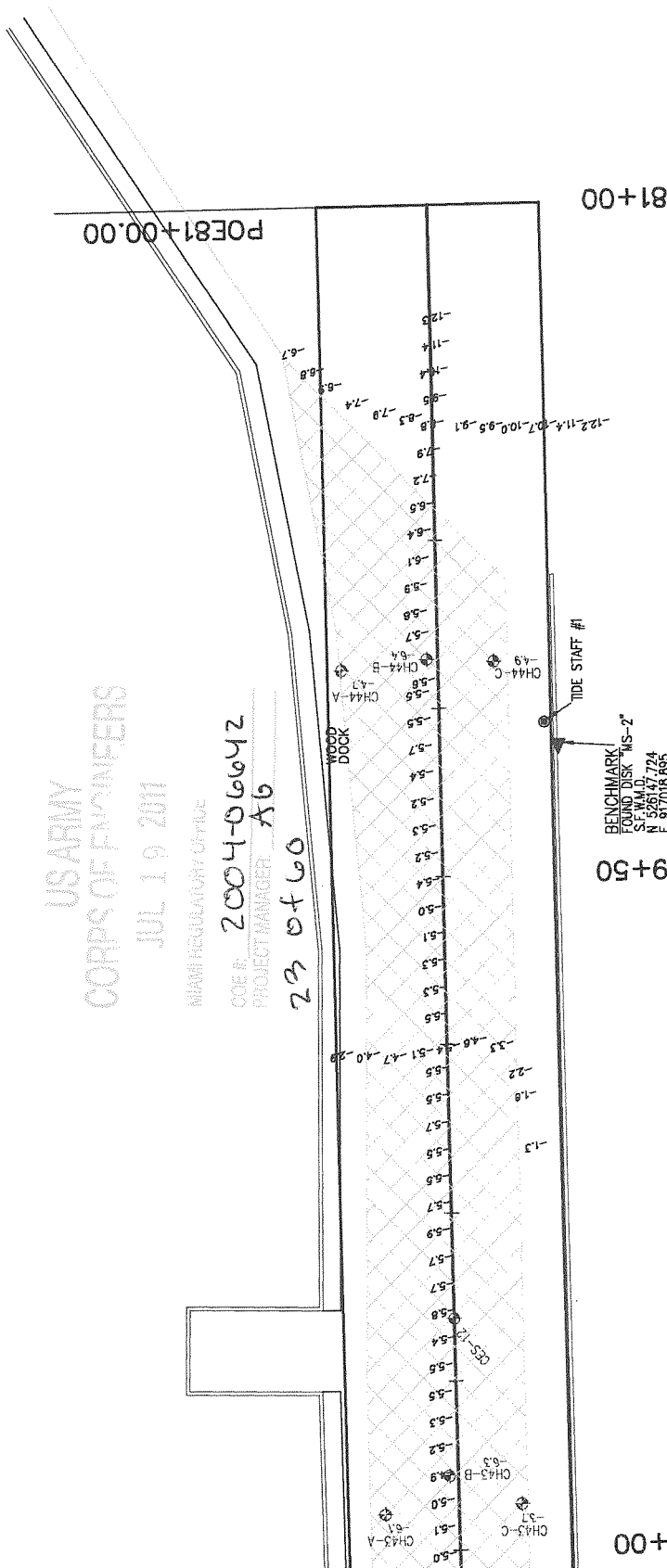
COE # 2004-06642

PROJECT MANAGER: AB

23 of 60

SEE SHEET 22

MATCHLINE



GRAPHIC SCALE



1 inch = 40 ft.

CERTIFICATION:

I HEREBY CERTIFY THAT THE INFORMATION DEPICTED HEREON IS TRUE AND COMPLETE AND MEETS THE MINIMUM TECHNICAL STANDARDS AS ESTABLISHED BY THE BOARD OF PROFESSIONAL SURVEYORS AND MAPPERS IN CHAPTER 61G17-6 OF THE FLORIDA ADMINISTRATIVE CODE, PURSUANT TO CHAPTER 472 OF THE FLORIDA STATUTES.

MITCHELL R. JARRELLS
FLORIDA REGISTERED CERTIFICATE NO. 643B

DADE COUNTY, FLORIDA
WAGNER CREEK &
SEYBOLD CANAL
MIAMI, FLORIDA



DENOTES DREDGE LIMITS



OPERATIONAL SECTION 6 SHEET 23 OF 23

ARC SURVEYING & MAPPING, INC.

5202 SAN JUAN AVENUE,
JACKSONVILLE, FLORIDA 32210
PHONE: 904/384-8377
LICENSED BUSINESS NO. 6487



DRAWN BY: JKM DATE: 11-14-08 FIELD BOOK & PAGE JOB NO.
08-08/08-09 07-10-07

A-08-29