

DEPARTMENT OF PUBLIC WORKS

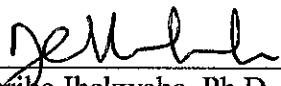
BULLETIN NO. 27

Subject: Final Restoration Guidelines for Utility Street Cuts within City Limits

Issue Date: November 12, 2010

Prepared by: Leonard Helmers, P.E., Professional Engineer IV

APPROVED:


Nzeribe Ihekwa, Ph.D., P.E., Director

The purpose of this bulletin is to clarify the restoration policy for trenching in the public right-of-way in the City of Miami.

ROADWAYS PAVED/REPAVED WITHIN 3 YEARS:

Non-emergency excavation permits will not be issued if the permit work involves cutting the newly laid asphalt. Where street cuts are permitted on a newly paved roadway, pavement restoration shall include a minimum 1" milling and resurfacing of the full width, edge of pavement to edge of pavement, of the roadway for a distance of a full block or the full length of the excavation to the nearest block whichever is greater.

ROADWAYS NOT PAVED/REPAVED WITHIN 3 YEARS:

1. For all longitudinal street cuts for sanitary sewers, water mains and other utilities including cable television, it will be the City's **mandatory requirement** of 1" milling of one full lane width for each lane within which the cut or construction damage extends and machine laid inlay of asphalt to match the existing surface.
2. If the Public Works Department finds that an overlay of the streets may exacerbate street conditions, or have a deleterious effect of public safety, then the City shall order the 1" milling and asphaltic inlay of the entire road surface.
3. Transverse street cuts shall be permanently restored in accordance with Public Works Standards Details, Misc. 35-88-7 and Misc. 35-88-8. For trench width less than 6 inches the final pavement width shall be 20 feet. For trench width greater than 6 inches the final pavement width shall be 20 feet plus the width of the trench.
4. If the Public Works Department inspector finds two or more street cuts on a City street, intersecting with the street of concern, the City may issue a restoration order utilizing the aforementioned standard for longitudinal streets cuts for the entire intersection.

Subject: Final Restoration Guidelines for Utility Street Cuts within City Limits

5. The above requirements will be reviewed on a case-by-case basis by the Public Works Department.
6. In accordance with City Code Section 54-42(e), no more than two blocks of street shall be under construction at a time and all work and restoration shall be completed on one of such blocks before work may begin in a new block. Final resurfacing shall be placed within 48 hours of the milling operation.
7. Temporary restoration of pavement markings shall be placed immediately after construction of any pavement surfacing. Permanent restoration of pavement markings (thermoplastic), in accordance with the most current Manual of Uniform Traffic Control Devices and Miami-Dade County Public Works Department standards will be required within thirty (30) days of final pavement surfacing.

SIDEWALK, CURB, CURB AND GUTTER, VALLEY GUTTER:

All sidewalk, curb, curb and gutter and valley gutter removed or damaged by the contractor during the construction of the utility facility shall be restored by the contractor in accordance with the applicable City, County or State standards. Such restoration shall be the complete flag and/or section up to the existing joint of the adjacent undamaged sidewalk, curb, curb and gutter and valley gutter.

“NON-STANDARD” ROADWAY MATERIALS:

Existing roadway pavement, swales, sidewalk, curb, curb and gutter and valley gutter constructed with “non-standard” materials including, but not limited to, bricks, pavers, tiles, lattice concrete swale blocks, stamped/textured/color concrete or asphalt shall be restored with the same type of finish material. Installation/construction of “non-standard” materials shall be in accordance with applicable City standards and the manufacturer’s recommendations.

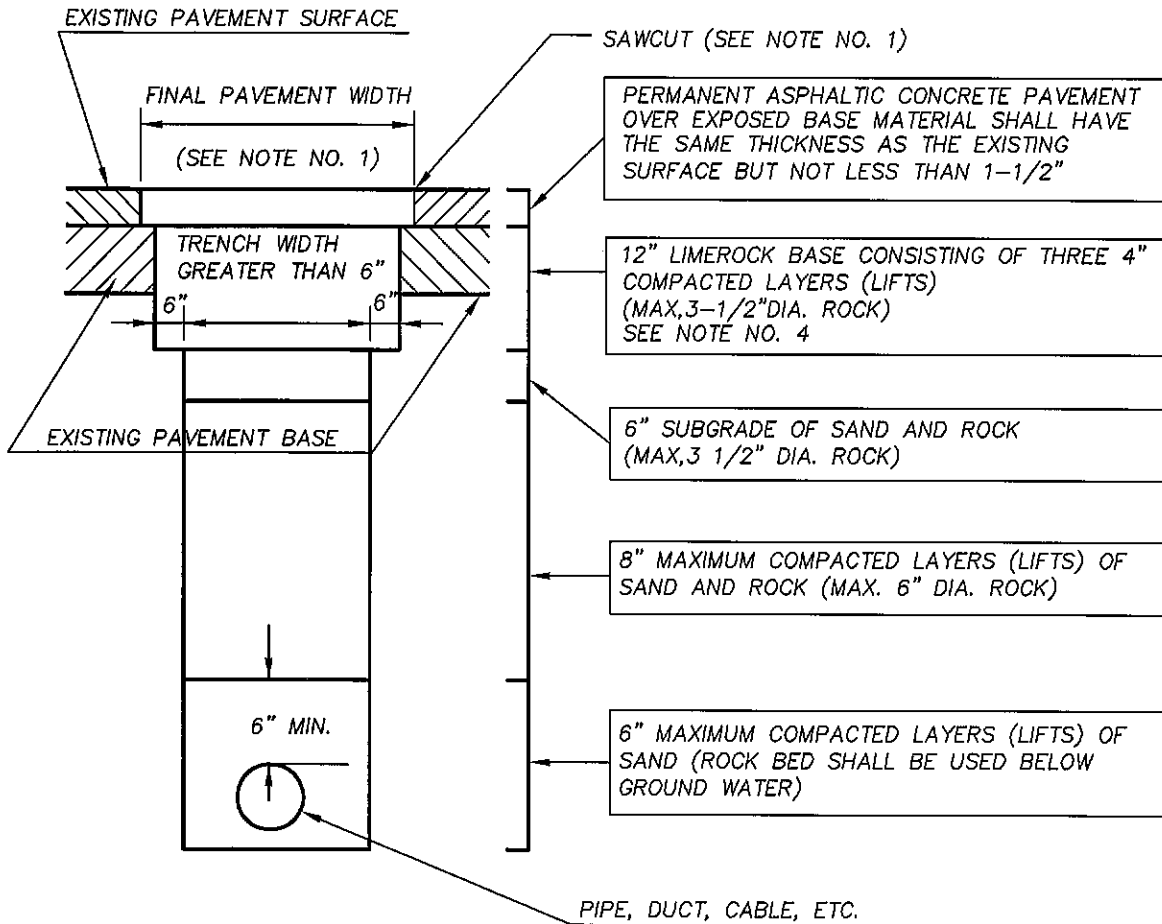
LANDSCAPING, STREET FURNITURE, DECORATIVE ILLUMINATION:

All damaged sod shall be replaced with solid sod of the same variety. Prior to installing sod, swale areas shall be graded/shaped in accordance with City standards. All other approved landscaping shall be restored with plants of the same species. A separate Public Works Department permit is required to remove and install trees or to trim/prune any branches or roots. All street furniture and decorative illumination including, but not limited to, benches, trash receptacles, bicycle racks, informational kiosks, decorative light poles, fixtures, brackets, wiring, etc., removed or damaged by the contractor during construction of the utility facility shall be repaired or replaced by the contractor in accordance with applicable City standards, electric codes and manufacturer’s specifications.

Subject: Final Restoration Guidelines for Utility Street Cuts within City Limits
Page 3

EXISTING STORM DRAINAGE FACILITIES:

All existing storm drainage facilities including, but not limited to, inlets, manholes, exfiltration trench, swale trench, damaged by the contractor during construction of the utility facility shall be restored by the contractor in accordance with the applicable City, County or State standards.



1. FINAL PAVEMENT RESTORATION WIDTH SHALL BE IN ACCORDANCE WITH DEPARTMENT OF PUBLIC WORKS BULLETIN NO. 27.
2. EXISTING CONCRETE PAVEMENT OR CONCRETE BASE SHALL BE REPLACED WITH CONCRETE. CONCRETE BASE SHALL BE REINFORCED WITH NO. 6 GAUGE, 6" BY 6" WIRE FABRIC.
3. A MINIMUM OF ONE (1) CERTIFIED LABORATORY DENSITY TEST SHALL BE REQUIRED FOR EACH BACKFILL LAYER FOR EVERY FIFTY (50) LINEAR FEET OR LESS OF TRENCH
4. TRENCH BACKFILL, INCLUDING TEMPORARY BASE AND SUBGRADE, SHALL BE COMPACTED TO A DENSITY NOT LESS THAN NINETY-FIVE PERCENT (95%) OF AASHTO T-180 (MODIFIED PROCTOR)
5. "CONTROLLED LOW STRENGTH MATERIAL" (FLOWABLE FILL) IN ACCORDANCE WITH F.D.O.T STANDARDS SPECIFICATIONS FOR ROAD AND BRIDGE CONSTRUCTION, SECTION 121, MAY BE SUBSTITUTED FOR SAND AND ROCK BACKFILL BETWEEN THE BOTTOM OF THE PAVEMENT BASE AND 6" ABOVE THE CROWN OF THE UTILITY. CERTIFICATION FROM THE FLOWABLE FILL SUPPLIER SHALL BE REQUIRED.

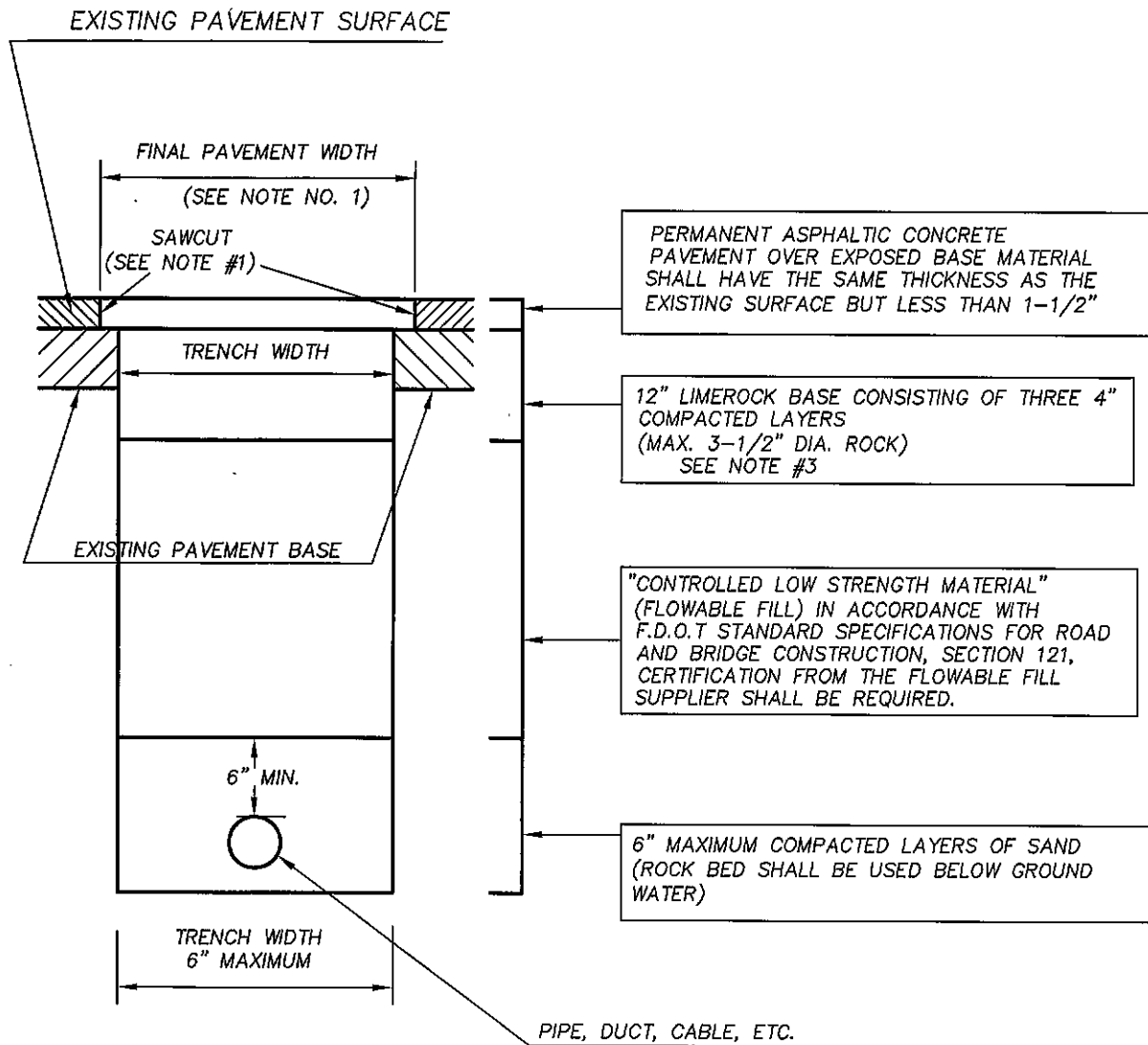
BACKFILL AND PERMANENT PAVEMENT STANDARDS FOR TRENCHES GREATER THAN 6" IN WIDTH IN THE PUBLIC RIGHT OF WAY

N.T.S.

DR: MA
CK:

DEPARTMENT OF PUBLIC WORKS
CITY OF MIAMI, FLORIDA

R-3 MISC.35-88-7
Sheet 1 of 1



1. FINAL PAVEMENT RESTORATION WIDTH SHALL BE IN ACCORDANCE WITH DEPARTMENT OF PUBLIC WORKS BULLETIN NO. 27.
2. EXISTING CONCRETE PAVEMENT OR CONCRETE BASE SHALL BE REPLACED WITH CONCRETE.
3. "CONTROLLED LOW STRENGTH MATERIAL" (FLOWABLE FILL) MAY BE SUBSTITUTE FOR 12" LIMEROCK BASE.

**BACKFILL AND PERMANENT PAVEMENT STANDARDS
FOR TRENCHES 6" OR LESS IN WIDTH
IN THE PUBLIC RIGHT OF WAY**

N.T.S.

DR: MA
CK:

DEPARTMENT OF PUBLIC WORKS
CITY OF MIAMI, FLORIDA

R-5 MISC. 35-88-8
Sheet 1 of 1